

Customer Information Sheet

DRAWING No.: M80-MCXXXMI-XX-XXXXL

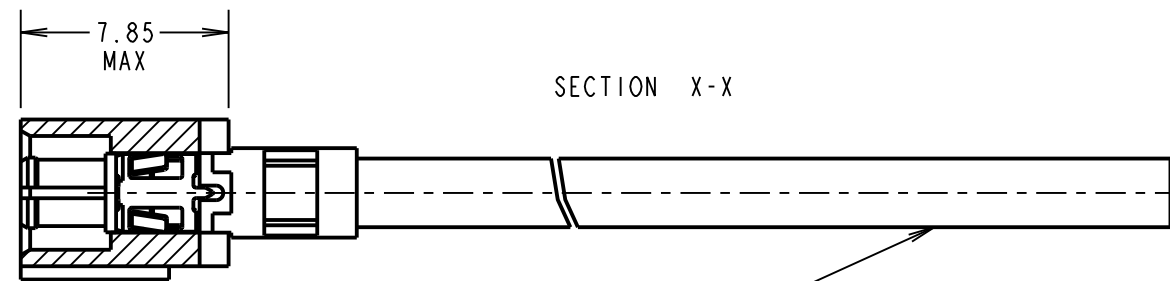
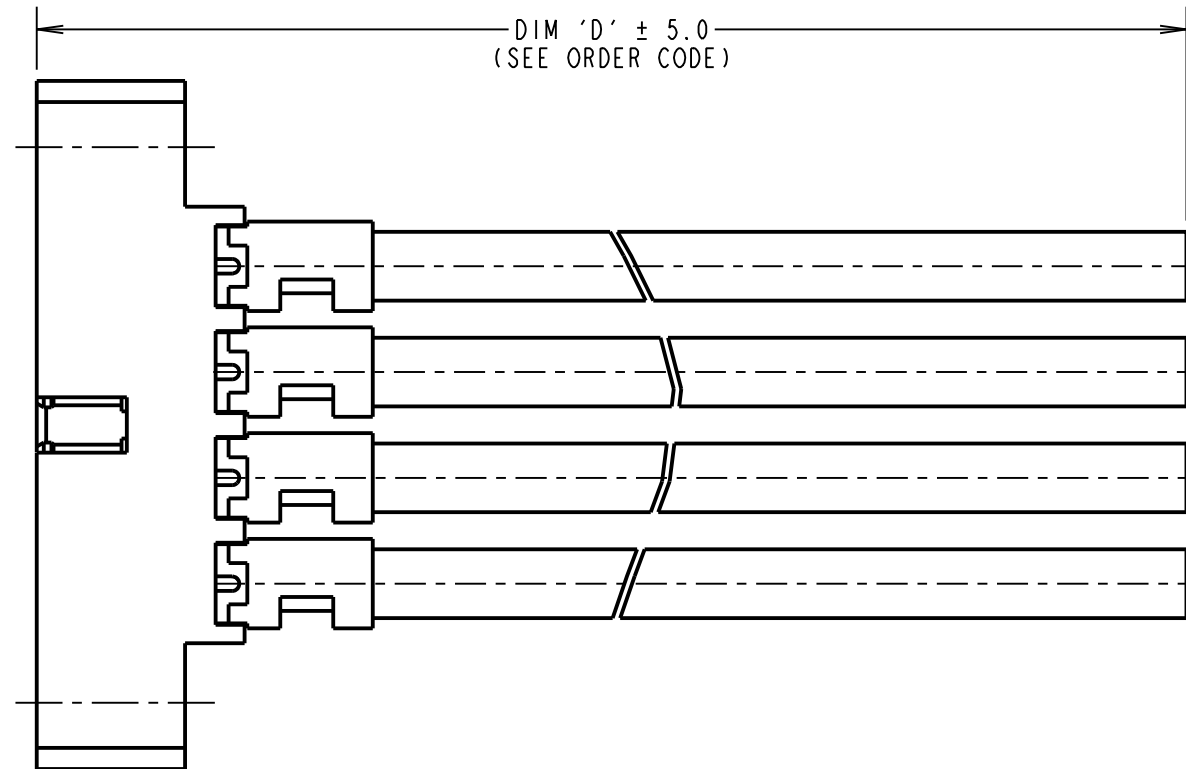
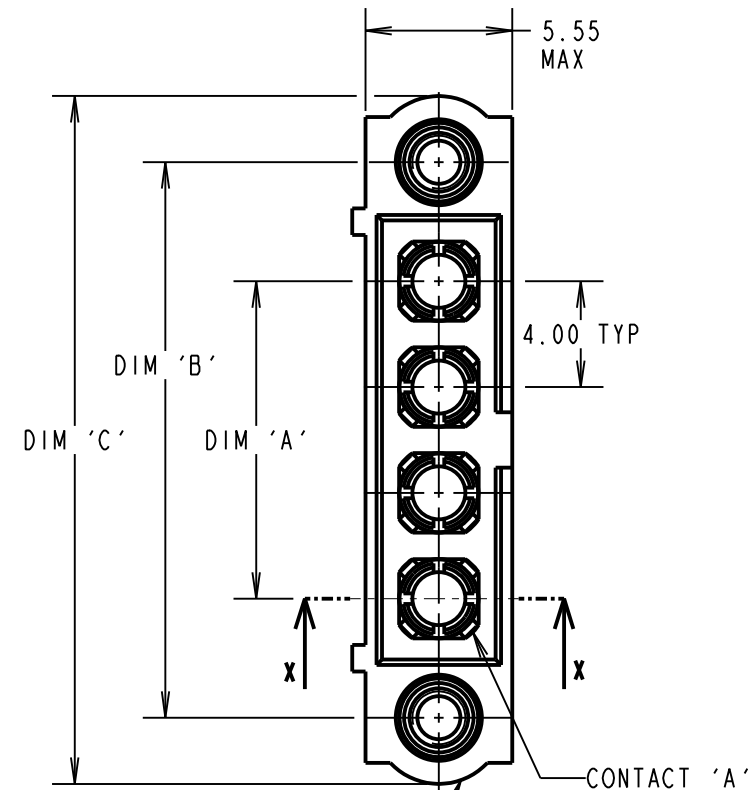
IF IN DOUBT - ASK

©

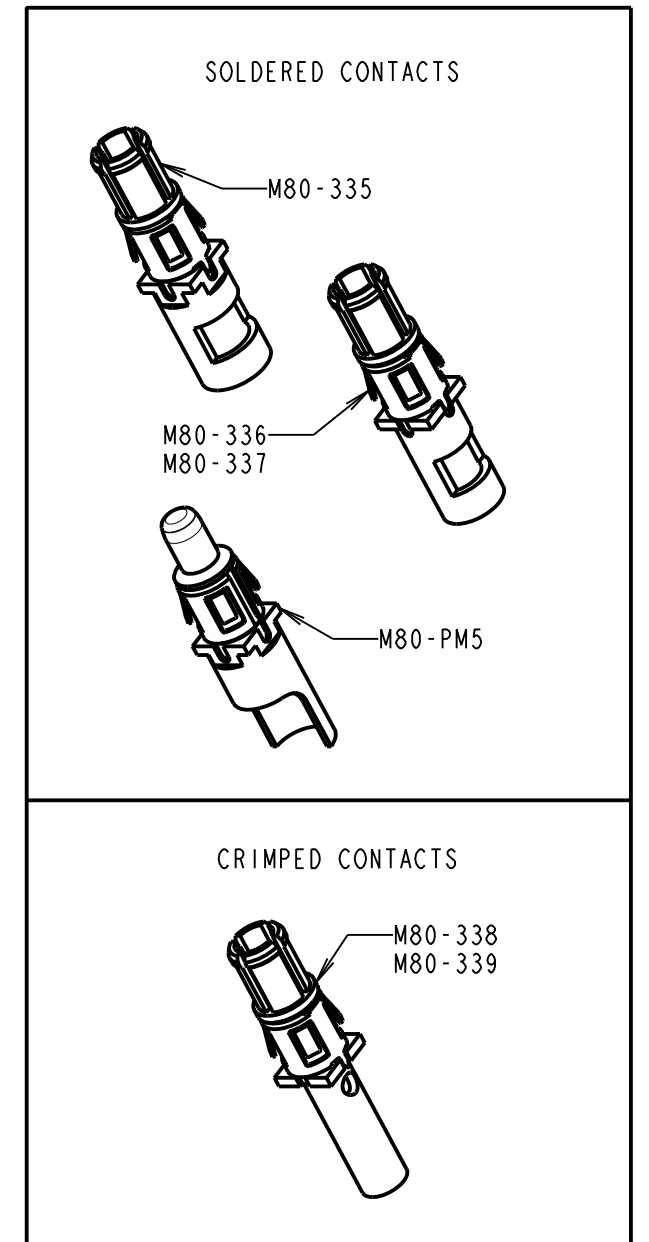
NOT TO SCALE

THIRD ANGLE PROJECTION

ALL DIMENSIONS IN mm



WHITE PTFE WIRE
SEE C049XX COMPONENT SPECIFICATION
FOR WIRE TYPE
(SEE ORDER CODE FOR GAUGES)



MALE MOULDING (1-OFF):
SEE ORDER CODE FOR TOTAL
No. OF CONTACTS

- NOTES:
1. CABLE ASSEMBLIES ARE BULK PACKED IN BAGS.
2. FOR COMPLETE SPECIFICATION SEE COMPONENT SPECIFICATION
C005XX AND C049XX (LATEST ISSUES).

DIMENSION	MEASUREMENT
DIM 'A'	(4 x No. OF CONTACTS) - 4.00
DIM 'B'	(4 x No. OF CONTACTS) + 5.00
DIM 'C'	(4 x No. OF CONTACTS) +10.0

ORDER CODE: M80-MCXXXMI-XX-XXXXL

- POWER CONTACT: _____
- 335 = POWER CONTACT SOLDER 12AWG M80-335
 - 336 = POWER CONTACT SOLDER 14AWG M80-336
 - 337 = POWER CONTACT SOLDER 16AWG M80-337
 - 338 = POWER CONTACT CRIMP 18AWG M80-338
 - 339 = POWER CONTACT CRIMP 20AWG M80-339
 - PM5 = POWER CONTACT SOLDER 10AWG M80-PM5

DIM 'D' LENGTH:
0060 = 60mm MIN
9999 = 9999mm MAX
(SEE TABLE FOR EXAMPLES)

TOTAL No. OF CONTACTS: _____
02 TO 12

RTP	3	11.03.21	30101
NAME	ISS.	DATE	CN/CO
APPROVED: R.PORTLOCK			
CHECKED: M.RUDKIN			
DRAWN: F. MCGOWAN			
CUSTOMER REF.:			
ASSEMBLY DRG:			

EXAMPLE PART No. :
2 CONTACT CONNECTOR WITH 300mm OF 20AWG WIRE =
M80-MC339MI-02-0300L
10 CONTACT CONNECTOR WITH 150mm OF 10AWG WIRE =
M80-MCPM5MI-10-0150L

HARWIN

www.harwin.com
technical@harwin.com

THIS DRAWING AND ANY
INFORMATION OR DESCRIPTIVE
MATTER SET OUT HEREON ARE
CONFIDENTIAL AND COPYRIGHT
PROPERTY OF THE HARWIN
GROUP AND MUST NOT BE
DISCLOSED, LOANED, COPIED
OR USED FOR MANUFACTURING,
TENDERING OR FOR ANY
OTHER PURPOSE WITHOUT
THEIR WRITTEN PERMISSION.

TOLERANCES
X. = ±1mm
X.X = ±0.50mm
X.XX = ±0.20mm
X.XXX = ±0.01mm
ANGLES = ±5°
UNLESS STATED

MATERIAL:
SEE ABOVE
FINISH: SEE ABOVE
S/AREA: mm²

TITLE: DATAMATE POWER MALE
SINGLE-ENDED CABLE ASSEMBLY
WITH JACKSCREW

DRAWING NUMBER:
M80-MCXXXMI-XX-XXXXL

SHT
2
OF
2