

Flush-type connector - SACC-CIP-M8FSB-5P SMD SH R32 - 1412259

Please be informed that the data shown in this PDF Document is generated from our Online Catalog. Please find the complete data in the user's documentation. Our General Terms of Use for Downloads are valid (<http://phoenixcontact.com/download>)



Flush-type connector, Universal, 5-position, SocketLink:straightLink:M8, B-coded, PCB mounting, SMD

Why buy this product

- Reduced mounting costs thanks to two-piece device connector
- Packaging available for automated pick and place assembly
- All common pin assignments and codings available
- Easy device integration thanks to mechanical port screw connections with threaded attachment, press-in contour or direct integration in the front plate
- Additional gasket for the device when not plugged in



Key Commercial Data

| | |
|------------------------|----------|
| Packing unit | 1 STK |
| Minimum order quantity | 100 STK |
| Custom tariff number | 85366990 |
| Country of origin | Germany |

Technical data

Ambient conditions

| | |
|---------------------------------|-----------------------------------------------------------------------|
| Ambient temperature (operation) | -25 °C ... 105 °C (Plug / socket) |
| | -40 °C ... 105 °C (without mechanical actuation) |
| Degree of protection | IP67 (correctly plugged in and locked) |
| | IP65 (not plugged in, by means of additional O-ring seal with device) |

General

| | |
|------|--------------------------------------------------------------------------------------------------------------------------------------------------|
| Note | The electrical and mechanical data specified assume that the connector pair is correctly locked and mounted. If the connector is unlocked and if |
|------|--------------------------------------------------------------------------------------------------------------------------------------------------|

Flush-type connector - SACC-CIP-M8FSB-5P SMD SH R32 - 1412259

Technical data

General

| | |
|-----------------------|---------------------------------------------------------------------------------------------------------------------------------------------------------------------------------------------------|
| | there is a danger of contamination, the connector must be sealed using a protective cap > IP54. Influences arising from litz wires, cables or PCB assembly must also be taken into consideration. |
| Rated current at 40°C | 3 A |
| Rated voltage | 30 V |
| Number of positions | 5 |
| Insulation resistance | ≤ 100 MΩ |
| Coding | B - standard |
| Standards/regulations | M8 connector IEC 61076-2-104 |
| Signal type/category | Universal |
| Overvoltage category | II |
| Connection method | SMD |
| Mounting type | PCB mounting |
| Type of packaging | Belt |

Material

| | |
|----------------------------------------|------|
| Flammability rating according to UL 94 | V0 |
| Contact material | CuZn |
| Contact surface material | Au |
| Contact carrier material | PA |
| Sealing material | FKM |

Cable

| | |
|--------------------------|------------------------------|
| Standards/specifications | M8 connector IEC 61076-2-104 |
|--------------------------|------------------------------|

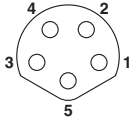
Standards and Regulations

| | |
|----------------------------------------|-----------------|
| Standard designation | M8 connector |
| Standards/regulations | IEC 61076-2-104 |
| Flammability rating according to UL 94 | V0 |

Drawings

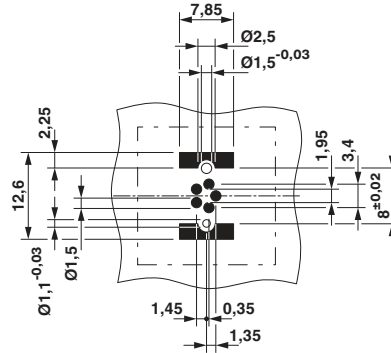
Flush-type connector - SACC-CIP-M8FSB-5P SMD SH R32 - 1412259

Schematic diagram



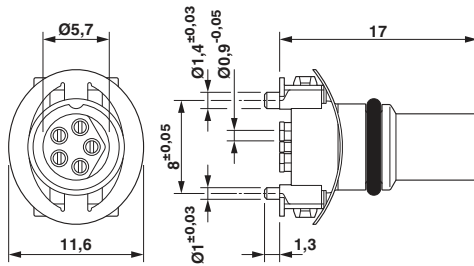
Pin assignment of M8 socket, 5-pos., B-coded

Drilling diagram



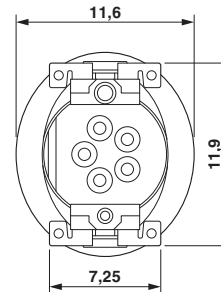
Drilling diagram

Dimensional drawing



M8 panel-mount connector, socket, two parts

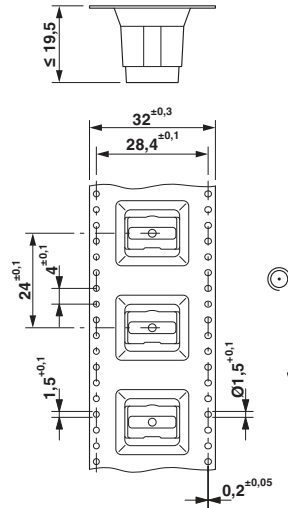
Dimensional drawing



View of solder side

Flush-type connector - SACC-CIP-M8FSB-5P SMD SH R32 - 1412259

Dimensional drawing



SMD tape-on-reel packing

Classifications

eCl@ss

| | |
|------------|----------|
| eCl@ss 5.1 | 27143423 |
| eCl@ss 6.0 | 27279220 |
| eCl@ss 8.0 | 27440103 |
| eCl@ss 9.0 | 27440102 |

ETIM

| | |
|----------|----------|
| ETIM 5.0 | EC002061 |
|----------|----------|

Approvals

Approvals

Approvals

EAC / cULus Recognized

Ex Approvals

Approvals submitted

Flush-type connector - SACC-CIP-M8FSB-5P SMD SH R32 - 1412259

Approvals

Approval details

| |
|-----|
| EAC |
|-----|

| | |
|--------------------------------|------|
| cULus Recognized | |
| Nominal current I _N | 3 A |
| Nominal voltage U _N | 30 V |

Accessories

Accessories

Contact insert

Sample set - SACC-CIP-M8FSB-5P SMD SH-SP - 1418661



Sample set, Universal, 5-position, SocketLink:straightLink:M8, B-coded, PCB mounting, SMD

Panel mounting base

Housing screw connection - SACC-BP-F-M8/M12 SMD - 1412506



M8 socket, rear mounting

Housing screw connection - SACC-FP-F-M8/M10 SMD - 1412504



M8 socket, front mounting

Flush-type connector - SACC-CIP-M8FSB-5P SMD SH R32 - 1412259

Accessories

Housing screw connection - SACC-FP-F-M8/PRESS SMD - 1412501



M8 socket, press-in mounting