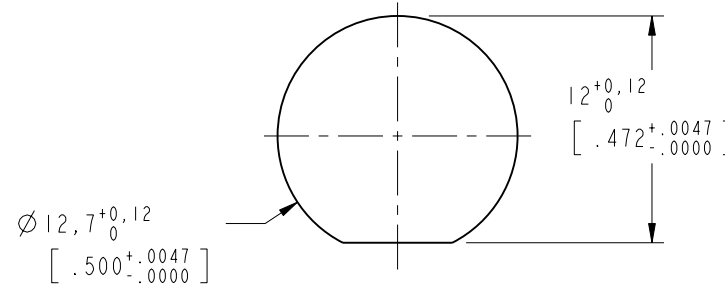


NOTES:

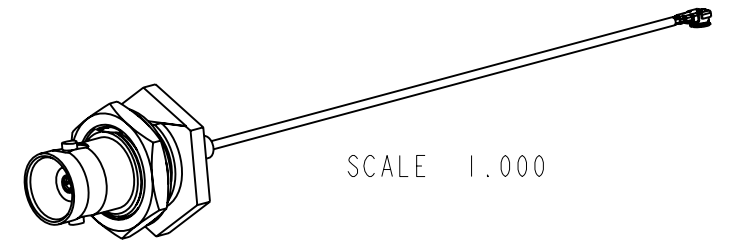
1. MATERIALS AND FINISHES:
 - BNC STR BHD JACK:
 - BODY, HEX NUT, LOCK WASHER, REAR BODY & FERRULE - BRASS NICKEL PLATING
 - CONTACT - BeCu GOLD PLATING
 - BULLET CONTACT - BRASS GOLD PLATING
 - INSULATOR - PTFE NATURAL
 - AMC PLUG:
 - BODY - PHOSPHOR BRONZE SILVER PLATING
 - CONTACT - PHOSPHOR BRONZE GOLD PLATING
 - INSULATOR - HIGH TEMP PLASTIC BLACK
 - CABLE: RG-178
2. ELECTRICAL:
 - A. IMPEDANCE: 50 OHMS
 - B. FREQUENCY RANGE: DC - 4 GHz
3. PACKAGING:
 - A. QUANTITY: SINGLE PACK
 - B. MARKING: BAG TO BE MARKED "AMPHENOL RF, 95-850-210-XXX, DATE CODE"
4. AMC IS INTERMATABLE WITH U.FL.

THIRD ANGLE PROJ.

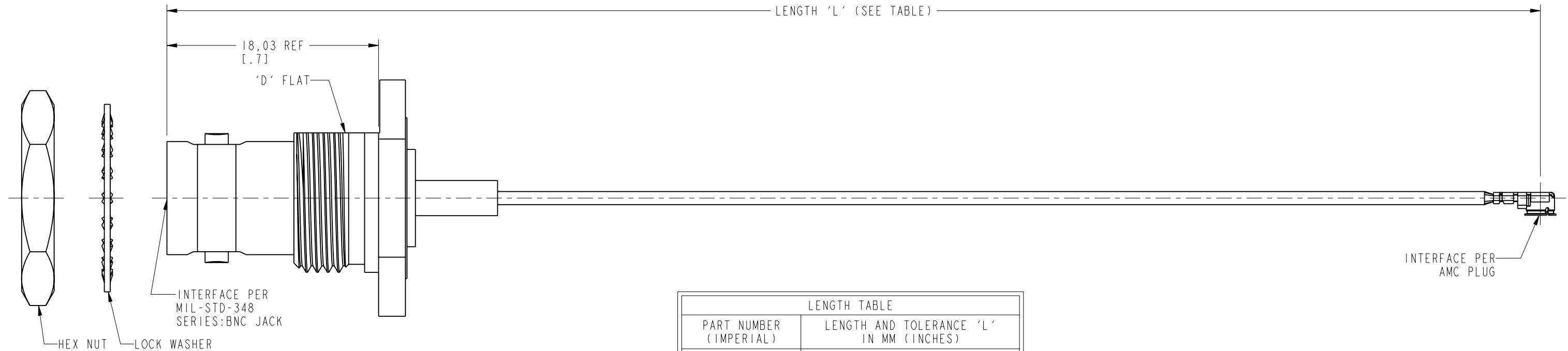
REVISIONS				
REV	DESCRIPTION	DATE	ECN	APPR
A	RELEASE TO MFG.	29-Mar-19	11061	EH



RECOMMENDED MOUNTING HOLE DIMENSIONS



SCALE 1.000



LENGTH TABLE	
PART NUMBER (IMPERIAL)	LENGTH AND TOLERANCE 'L' IN MM (INCHES)
95-850-210-050	50.00 ± 2.50 [1.969 ± .098]
95-850-210-100	100.00 ± 2.50 [3.937 ± .098]
95-850-210-150	150.00 ± 3.75 [5.906 ± .148]
95-850-210-200	200.00 ± 5.00 [7.874 ± .197]
95-850-210-250	250.00 ± 6.25 [9.843 ± .246]
95-850-210-300	300.00 ± 7.50 [11.811 ± .295]

DESIGN REQUIREMENTS:

- | | |
|---|--|
| <input checked="" type="checkbox"/> FREQUENCY: DC - 4 GHz | <input checked="" type="checkbox"/> CONTINUITY |
| <input type="checkbox"/> VSWR: ---- MAX | <input checked="" type="checkbox"/> HI-POT: 200 VRMS |
| <input type="checkbox"/> INS. LOSS: ----dB MAX | <input type="checkbox"/> OTHER: |

CUSTOMER OUTLINE DRAWING

ALL OTHER SHEETS ARE FOR INTERNAL USE ONLY

UNLESS OTHERWISE SPECIFIED, DIMENSIONS ARE IN METRIC AND TOLERANCES ARE: <0.5mm ± 0.05mm 0.5 - 6mm ± 0.1mm 6 - 30mm ± 0.2mm 30 - 120mm ± 0.3mm ANGLES ±1°	MATERIAL	DRAWN W. ZENG	DATE 2-Apr-19	TITLE BNC STR BHD JACK TO AMC R/A PLUG USING RG 178 CABLE VARIOUS LENGTH		Amphenol RF www.amphenolrf.com
	REFERENCE EAR# 8412	ENGINEER S. DUAN	DATE 8-Apr-19	SCALE: 3.0:1.0 SHEET 2 OF 2		
NOTICE - These drawings, specifications, or other data (1) are, and remain the property of Amphenol corp. (2) must be returned upon request; and (3) are confidential and not to be disclosed to any person other than those to whom they are given by Amphenol Corp. the furnishing of these drawings, specifications, or other data by Amphenol Corp., or to any other person to anyone for any purpose is not to be regarded by implication or otherwise in any manner licensing, granting rights to permitting such holder or any other person to manufacture, use or sell any product, process or design, patented or otherwise, that may in any way be related to or disclosed by said drawings, specifications, or other data.	REF:	APPROVED S. HSIEH	DATE 8-Apr-19	DWG SIZE B	REV A	DRAWING NO. 95-850-210-XXX
	CONFIGURATION LEVEL: In Work	FINISH	CAD FILE			