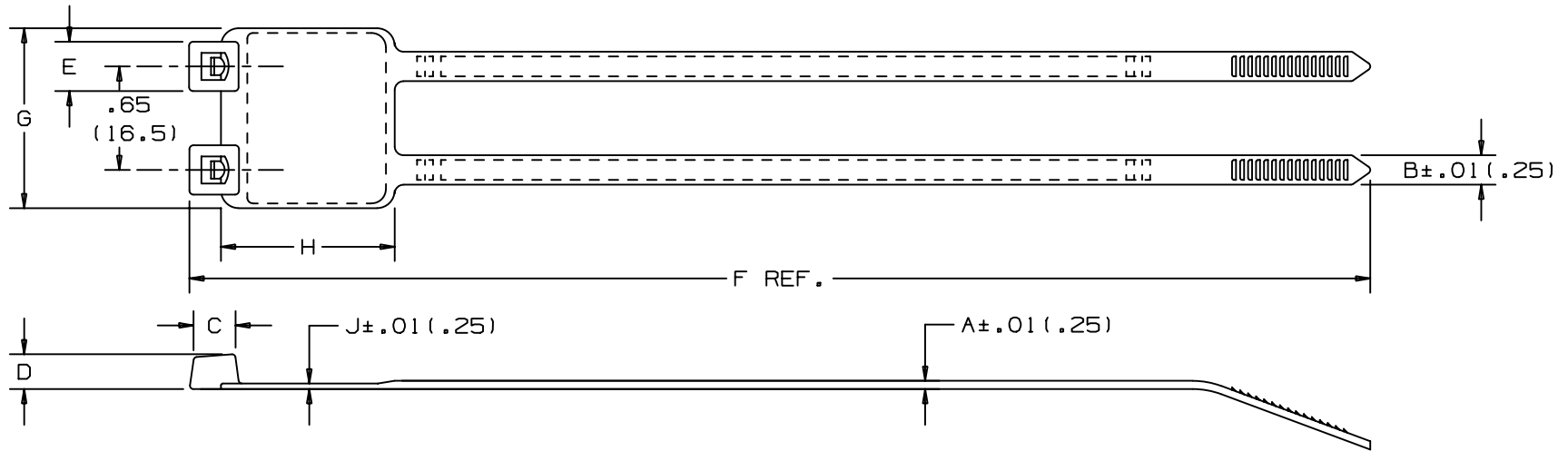


THIS COPY IS PROVIDED ON A RESTRICTED BASIS AND IS NOT TO BE USED IN ANY WAY DETRIMENTAL TO THE INTERESTS OF PANDUIT CORP.



PANDUIT PART NO.*	BUNDLE DIA.		A in (mm)	B in (mm)	C in (mm)	D in (mm)	E in (mm)	F in (mm)	G in (mm)	H in (mm)	J in (mm)	WRITE-ON AREA in (mm)	MIN LOOP TENSILE lbs (N)	CROSS- SECTION	WEIGHT lbs/100pcs. (g)
	MIN. in (mm)	MAX. in (mm)													
PL2M2S	.37 (9.5)	1.75 (45)	.052 (1.3)	.185 (4.7)	.258 (6.6)	.220 (5.6)	.320 (8.1)	7.4 (188)	1.17 (29.7)	1.09 (27.7)	.035 (.9)	.87 X 1.07 (22.1 X 27.2)	50 ** (222)	STANDARD	.72 (326)

**NOTES:**

- \*1) SEE CURRENT PRICE SHEET FOR PART NUMBER SUFFIX DESIGNATION FOR PACKAGE SIZE AND PART COLOR.
- \*\*2) LOOP TENSILE IS PER LEG OF STRAP.

CAD FILENAME/LAYERS  
DIMENSIONS IN PARENTHESES ARE IN METRIC UNITS.

PANDUIT CORP. TINLEY PARK, ILLINOIS  
PAN-TY® MARKER TIE  
PLM SERIES

UNLESS OTHERWISE SPECIFIED,  
DIMENSIONAL TOLERANCES ARE:  
(.X) ± ---- (.XXX) ± .020(.51)  
(.XX) ± .02(.5) ANGLES ± ----

UNLESS OTHERWISE SPECIFIED,  
ALL DIMENSIONS ARE GIVEN  
IN INCHES, THIRD ANGLE PROJECTION.

DRAWN BY  
SARGIS

DATE  
9-16-82

CHK'D

MAT'L:

NYLON 6/6

SCALE

NONE

DRAWING NO.

SS-17670

DWG

A

SIZE

REV	DATE	BY	CHK	DESCRIPTION	ECN - R	CUST	SUP
5	3/10/03	JABO		CORRECTED G DIMENSION TO 1.17, WAS 1.13	17670	5	