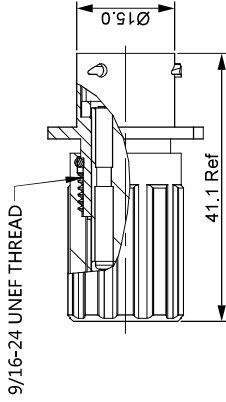
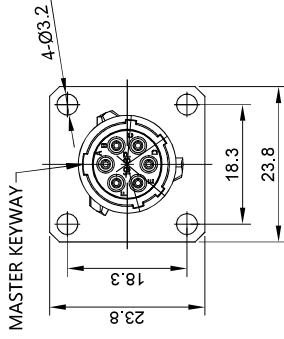
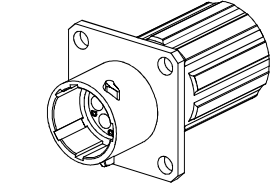


REVISIONS

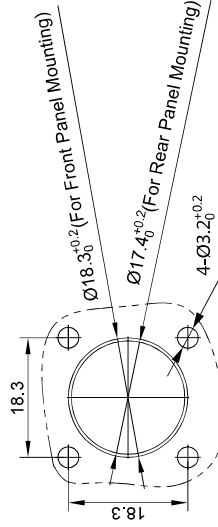
REV	ECO	DESCRIPTION	DATE	BY	APPR
B1	-	RELEASED DRAWING	July-07-2014	Ben	Tommy
B2	-	MODIFY THE INSERT LETTER LOCATION	May-20-2016	Ben	Tommy
B3	-	ADAPT TO CHANGE OF WIRE DIAMETER	Jan-7-2020	Ronald	Tommy



NOTES : (UNLESS OTHERWISE SPECIFIED)

- MATERIAL :
 SHELL : ZINC ALLOY , NICKEL PLATED.
 INSERT : THERMOPLASTIC , UL94 V-0.
 END CAP : THERMOPLASTIC , UL94 V-0.
 O-RING : NBR/SILICONE RUBBER.
 SEAL GASKET : NBR/SILICONE RUBBER.
 WIRE SEAL : SILICONE RUBBER
 PLASTIC BUSHING : THERMOPLASTIC , UL94 V-0.
- SPECIFICATIONS :
 2.1 RATED CURRENT :
 2.1.1 STAMPED CONTACT 5A (MAX).
 2.1.2 MACHINED CONTACT 7.5A(MAX).
 2.2 RATED VOLTAGE : 250V (AC/DC) .
 2.3 OPERATING TEMPERATURE : SEE CHART.
 2.4 DIELECTRIC WITHSTANDING VOLTAGE : LESS THAN 2 MILLIAMPS CURRENT LEAKAGE@1500 VOLTS AC.
 2.5 INSULATION RESISTANCE : 5000 MEGOHMS MIN.
 2.6 IP--CLASS : IP67 (MATED CONDITION).
 2.7 MATING CYCLES DURABILITY : 500 CYCLES(MIN).
 2.8 ROHS COMPLIANT.
- SUITABLE CONTACTS : 20# CONTACTS.
- ALL DIMENSIONS ARE FOR REFERENCE USE ONLY.
- CONTACT SIZE AND REAR SEAL WIRE RANGE :

KEY POS	PART NUMBER	TEMPERATURE
N	RT0W0106PNHEC	-40°C ~ 105°C
W	RT0W0106PWHEC	-40°C ~ 125°C
X	RT0W0106PXHEC	-40°C ~ 125°C
Y	RT0W0106PYHEC	-40°C ~ 125°C
Z	RT0W0106PZHEC	-40°C ~ 125°C



PANEL CUT OUT REFERENCE

QUANTITY	SEE PART NUMBER CHART	PART NUMBER	DESCRIPTION	ITEM
MATERIALS LIST				
UNLESS OTHERWISE SPECIFIED (Dimensions in mm):		SIGNATURES		
1) 1/16" (0.625mm)		DRAWN: [Signature]		
2) Tolerances are as follows:		DATE: Jan-7-2020		
1 F, DEC ±0.20		CHECKED: [Signature]		
2 F, DEC ±0.15		APPROVAL: [Signature]		
3) Note reference =		CUSTOMER: [Signature]		
MATERIAL SPECIFICATIONS				
THIS DRAWING IS SUPPLIED FOR INFORMATION ONLY. DESIGN FEATURES SHOWN HEREON ARE THE PROPERTY OF AMPHENOL. ALL RIGHTS OF REPRODUCTION ARE RESERVED. ALL DIMENSIONS ARE SUBJECT TO NORMAL MANUFACTURING VARIATIONS.				
PROCESS SPECIFICATIONS:				
NEXT ASSY:				

CONTACT SIZE	MIN. INSUL O.D.	MAX. INSUL O.D.
20#	Ø1.4mm	Ø2.1mm

Amphenol
 Site Systems - www.amphenol-site.com
 44724 Morley Drive
 Clinton Township, MI 48036

ECO-MATE, RECEPTACLE,
 SIZE 10, 6POS, PIN, END CAP.

SIZE TYPE: B c-
 DRAWING: RT0W0106P*HEC*
 SCALE: NONE
 SHEET 1 OF 1