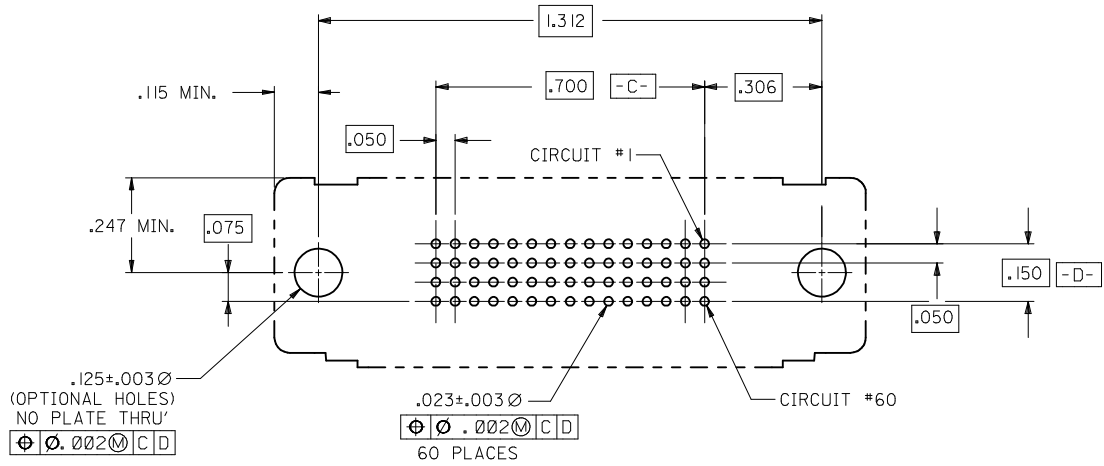


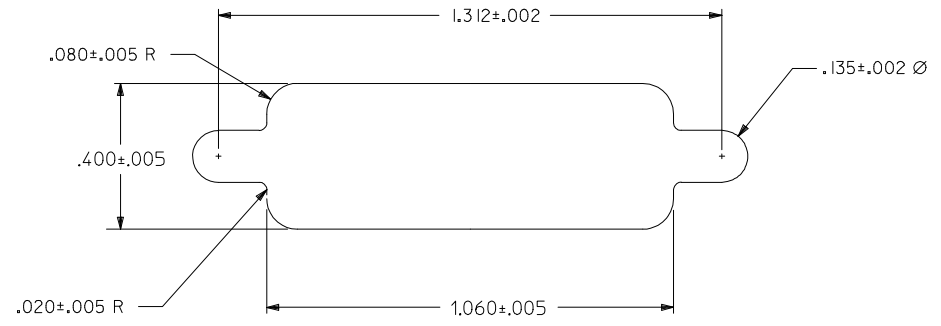
- NOTES:
- MATERIALS:
 - HOUSING: GLASS FILLED LCP (LIQUID CRYSTAL POLYMER), UL 94V-0, COLOR: BLACK.
 - MOLDED STICK: GLASS FILLED LCP (LIQUID CRYSTAL POLYMER), UL 94V-0, COLOR: BLACK.
 - FEMALE TERMINAL: HIGH PERFORMANCE COPPER ALLOY
 - OUTER SHELL: DEEP DRAWN STEEL.
 - PLATING :
 - TERMINAL: 30 microinches / 0.76 micrometer MIN. GOLD IN SELECTIVE AREA, 100 microinches / 2.54 micrometer MIN. TIN IN SELECTIVE AREA, OVER NICKEL UNDERPLATE OVERALL.
 - OUTER SHELL: 100 microinches / 2.54 MIN. BRIGHT NICKEL OVER COPPER FLASH (OPTIONAL)
 - CONFORMS TO PRODUCT SPECIFICATION PS-70928.
 - PARTS PACKAGED PK-70873-0291.
 - THREAD GAUGE MAY REQUIRE UP TO 1 IN.-LB. OF TORQUE DURING GAUGING PROCESS.
 - PART COMPLIES WITH CLASS B OF COSMETIC SPECIFICATION PS-45499-002

SECTION X-X

MOD PANEL CUT-OUT EC NO: UCP2012-0335 DRAWN: DMORGAN 2011/08/11 CHKD: MPOFF 2014/04/11 APPR: SMILLER 2014/05/12	QUALITY SYMBOLS ▽=0 ▽=0 ▽=0	GENERAL TOLERANCES (UNLESS SPECIFIED)		DIMENSION STYLE INCH ONLY		SCALE 4:1	DESIGN UNITS INCH	THIRD ANGLE PROJECTION			
		4 PLACES ± --- ± ---	3 PLACES ± --- ± .010	2 PLACES ± --- ± ---	1 PLACE ± --- ± ---	0 PLACE ± --- ± ---	DRAWN BY MOS		DATE 1993/12/07		
		CHECKED BY MOS		DATE 1993/12/07		APPROVED BY CAB		DATE 1993/12/07		.050 PITCH CKT LFH VERTICAL I/O - M3 SHIELD RECEPTACLE molex	
		MATERIAL NO. 70928-0002		DOCUMENT NO. SDA-70928-0002		SHEET NO. 1 OF 2					
DRAFT WHERE APPLICABLE MUST REMAIN WITHIN DIMENSIONS		ANGULAR ±1/2°		SIZE C		THIS DRAWING CONTAINS INFORMATION THAT IS PROPRIETARY TO MOLEX INCORPORATED AND SHOULD NOT BE USED WITHOUT WRITTEN PERMISSION					

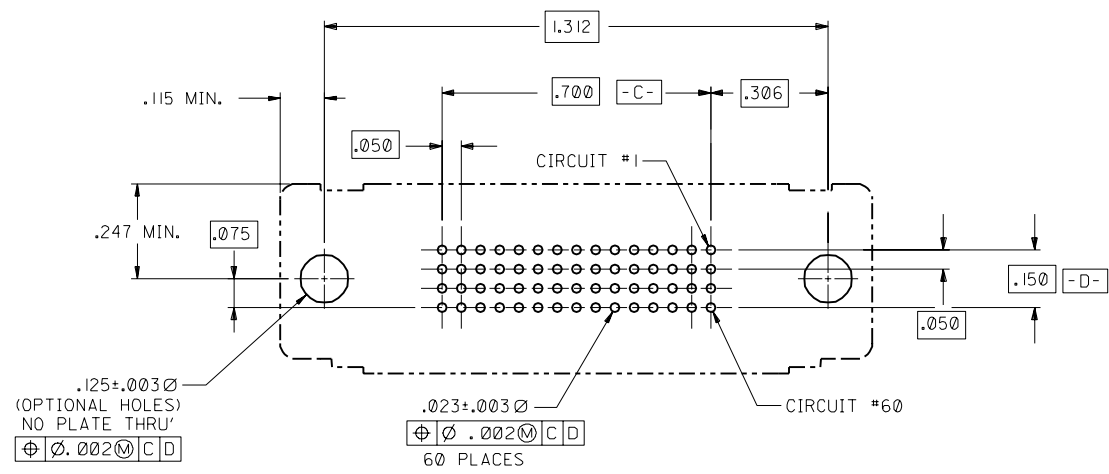


RECOMMENDED P.C.B. LAYOUT
COMPONENT SIDE

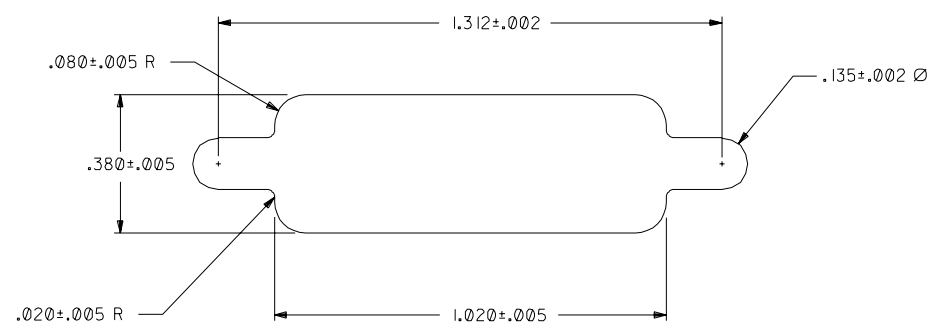


RECOMMENDED PANEL CUT-OUT

SEE SHEET 1 EC NO: UCP2012-0335 DRW:DMORGAN 2011/08/11 CHK:DMPOFF 2014/04/11 APPR:SMILLER 2014/05/12	QUALITY SYMBOLS ∇=0 ∇=0 ∇=0	GENERAL TOLERANCES (UNLESS SPECIFIED)		DIMENSION STYLE INCH ONLY		SCALE 4:1	DESIGN UNITS INCH	THIRD ANGLE PROJECTION			
				mm	INCH	DRAWN BY MOS	DATE 1993/12/07	TITLE .050 PITCH CKT LFH VERTICAL I/O - M3 SHIELD RECEPTACLE			
				±---	±---	CHECKED BY MOS	DATE 1993/12/07				
				4 PLACES	±---	±---	APPROVED BY CAB	DATE 1993/12/07	MATERIAL NO. 70928-0002 DOCUMENT NO. SDA-70928-0002 SHEET NO. 2 OF 2		
				3 PLACES	±---	±.010					
		2 PLACES	±---	±---			SIZE THIS DRAWING CONTAINS INFORMATION THAT IS PROPRIETARY TO MOLEX INCORPORATED AND SHOULD NOT BE USED WITHOUT WRITTEN PERMISSION				
		1 PLACE	±---	±---							
		0 PLACE	±---	±---							
		ANGULAR ±1/2°		DRAFT WHERE APPLICABLE MUST REMAIN WITHIN DIMENSIONS							



RECOMMENDED P.C.B. LAYOUT
COMPONENT SIDE



RECOMMENDED PANEL CUT-OUT

C	SEE SHEET I
B	SEE SHEET I
A	SEE SHEET I

DIMENSIONS SHOWN (METRIC) INCH		▽ = 0		◻ = 0		REVISE ONLY ON CAD SYSTEM	
UNLESS OTHERWISE SPECIFIED TOLERANCES ANGULAR ± 1/2°							
3 PLACE ± .010		INCH		METRIC		---	
2 PLACE ±		±		±		---	
1 PLACE ---		---		±		---	
DRAFT WHERE APPLICABLE MUST REMAIN WITHIN DIMENSIONS							
DRAWN BY: MOS		CHK'D BY: MOS		FILE NAME: S7032811A		SHEET NO.: 2	
APP'D BY: GWF		SCALE: 4: 1		PART NO.: 70928-0002		DATE: 4/14/94	
MOLEX INCORPORATED				L15LE,ILL. 60532		U.S.A.	
DRAWING NO.: SDA-70928-0002				DIV.: CD		SIZE: C	
THIS DRAWING CONTAINS INFORMATION THAT IS PROPRIETARY TO MOLEX INC. AND SHOULD NOT BE USED WITHOUT WRITTEN PERMISSION.							

70928