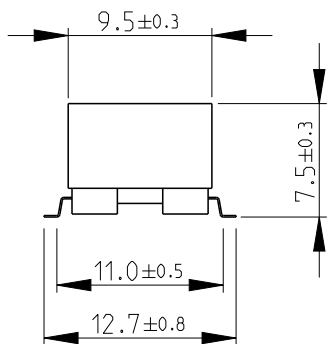
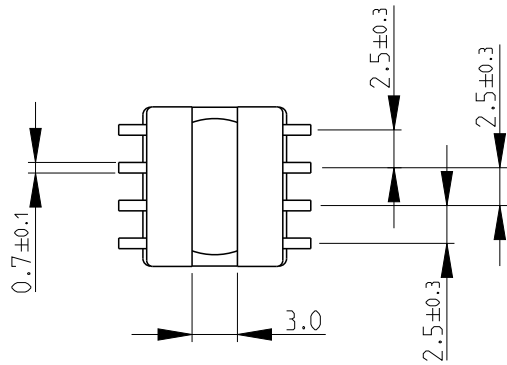
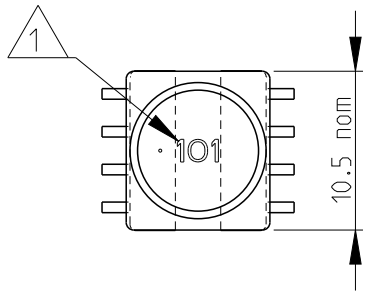
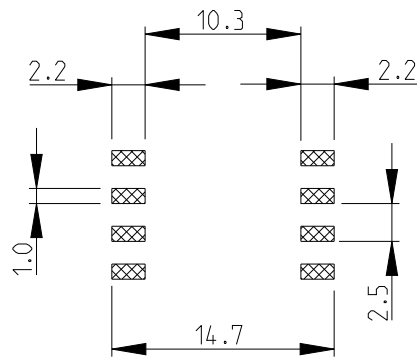


LOC	DIST	REVISIONS					
E	B	P	LTR	DESCRIPTION	DATE	DWN	APVD
		BA2	ECR-13-015529		04OCT2013	KR	TN

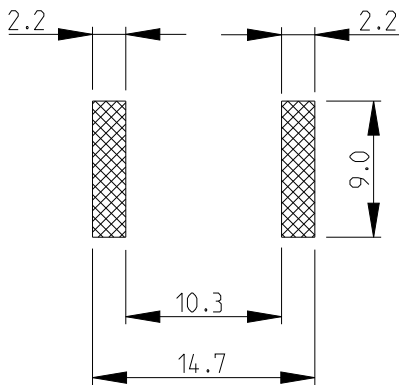


RECOMMENDED LAND PATTERN FOR INDUCTANCE VALUES 100 μH OR HIGHER



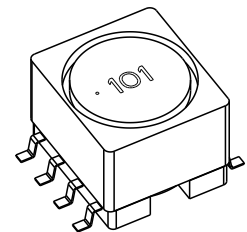
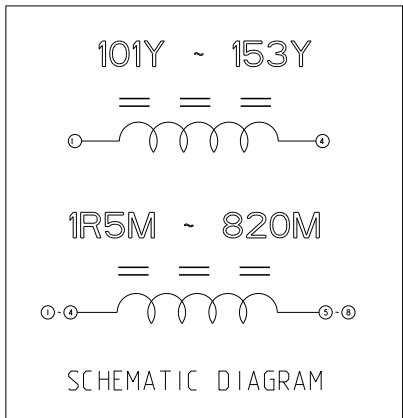
RoHS Compliant

RECOMMENDED LAND PATTERN FOR INDUCTANCE VALUES 1.5 μH - 82 μH



1 INDUCTANCE CODE

2 FOR FURTHER INFORMATION SEE DATA SHEET FOR 3632 SERIES-SHIELDED SMD POWER INDUCTORS



2008

RELEASED FOR PUBLICATION

THIS DRAWING IS UNPUBLISHED.

ALL RIGHTS RESERVED.

BY -
© COPYRIGHT 2008

DIMENSIONS: mm	DWN	SUBHASH.M	03-Sep-08	MATERIAL	-	FINISH	-
	CHK	PRAKASH.S	03-Sep-08				
TOLERANCES UNLESS OTHERWISE SPECIFIED:	APVD	STEPHEN.P	03-Sep-08				
0 PLC ± 0.2	PRODUCT SPEC	-	-	NAME			
1 PLC ± 0.1	-	-	-	SHIELDED SMD POWER INDUCTOR			
2 PLC ±	APPLICATION SPEC	-	-	SERIES 3632B			
3 PLC ±	-	-	-	SIZE	CAGE CODE	DRAWING NO	RESTRICTED TO
4 PLC ±	-	-	-	A 4	00779	© = 1625813	-
ANGLES ± 5°	WEIGHT	-	-	SCALE			
	-	-	-	2:1			
Customer Drawing				SHEET		1 OF 1	
				REV		BA2	