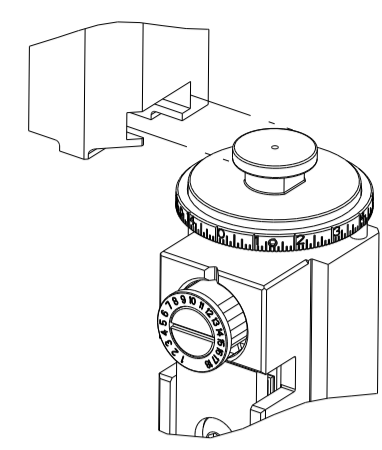


| PART NUMBER | REVISION | DESCRIPTION | FEED TYPE |
|-------------|----------|----------------------------------|------------|
| 2151844-1 | C | FINE CRIMP HEIGHT ADJUST | MECHANICAL |
| 2151844-2 | C | FINE CRIMP HEIGHT ADJUST | PNEUMATIC |
| 7-2151844-1 | C | MECHANICAL AND CRIMP TOOLING KIT | MECHANICAL |
| 7-2151844-2 | C | PNEUMATIC AND CRIMP TOOLING KIT | PNEUMATIC |
| 7-2151844-7 | A | CRIMP TOOLING KIT | - |

ATLANTIC VERSION TERMINATOR INTERFACE ADAPTER



| APPLICATOR DATA | | |
|-----------------|----------------|------|
| CRIMP | SIZE | TYPE |
| WIRE | 1.40 mm [.055] | F |
| INSUL | 1.78 mm [.070] | O |

APPLICATOR INSTRUCTIONS 408-35042

| TERMINAL DATA: HIROSE TERMINAL HIROSE CRIMP SPECIFICATION | | | |
|---|------------------------------|-------------|-----------------|
| TERMINAL NAME: SOCKET | | | |
| WIRE STRIP LENGTH | INSULATION DIAMETER RANGE | | |
| 2.50-3.30 mm [.098-.130 IN] | Ø1.14-1.60 mm [.045-.063 IN] | | |
| TERMINAL APPLICATION SPECIFICATION | TAD5024-014 | | |
| TERMINALS APPLIED | | | |
| TE TERMINAL | HIROSE TERMINAL | TE TERMINAL | HIROSE TERMINAL |
| 286588-1 | DF1B-2428SCF | 286588-2 | DF1B-2428SCFA |

| WIRE SIZE | CRIMP HEIGHT mm [INCH] | CRIMP HEIGHT REFERENCE SETTING |
|-----------|----------------------------|--------------------------------|
| 24 AWG | 0.83+/-0.05 [.033+/- .002] | 9.9 |
| 26 AWG | 0.79+/-0.05 [.031+/- .002] | 10.3 |
| 28 AWG | 0.77+/-0.05 [.030+/- .002] | 10.5 |

- 1. RECOMMENDED SPARE PARTS
- 2. REFER TO SUPPLIED INSTRUCTION SHEET FOR CLEANING, LUBRICATION AND STORAGE OF APPLICATOR.
- 3. APPLY PART NUMBER 2-23419-6 LOCTITE TO THREADS OF ITEM 242.
- 4. CRIMP HEIGHT REFERENCE SETTING WAS THE SETTING USED WHEN THE APPLICATOR WAS QUALIFIED AT THE FACTORY. ADJUSTMENT MAY BE NECESSARY WHEN RUNNING APPLICATOR IN THE FIELD.
- 5. UNLESS SPECIFIED OTHERWISE TORQUE VALUES SHALL BE USED PER DOCUMENT, 101-35000.
- 6. CUT TO LENGTH AT ASSEMBLY.

***WARNING**
 ON INSTALLATION, SET WIRE DISC TO CRIMP HEIGHT REFERENCE SETTING FOR LARGEST WIRE SIZE. CRIMP HEIGHT REFERENCE SETTINGS GREATER THAN THE VALUE SHOWN MAY CAUSE DAMAGE TO THE CRIMP TOOLING, REFER TO THE INSTRUCTION SHEET FOR PROPER SETUP AND ADJUSTMENTS.

ATLANTIC VERSION
 Shown on sheets 1 of 4 & 2 of 4
 (Pacific version shown on sheets 3 of 4 & 4 of 4)

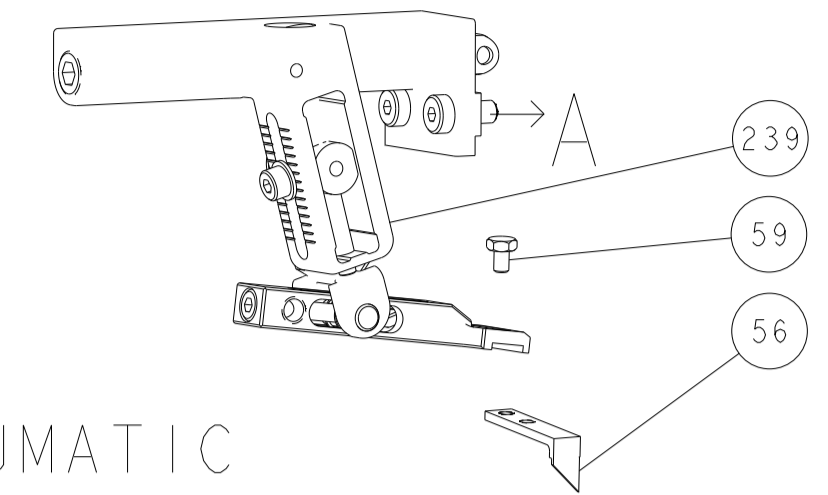
| LOC | DIST | REVISIONS | | | | | |
|-----|------|-----------|-----|---------------|-----------|-----|------|
| | | P | LTN | DESCRIPTION | DATE | OWN | APVD |
| A | 66 | B | | ECR-14-008767 | 11JUN2014 | RK | GB |
| | | C | | ECR-22-148759 | 08AUG2022 | FZ | TE |

| | | | | | | | | |
|---|-----|-----|-----|-----|-------------|-------------------------------------|-------------|---------|
| - | 1 | - | 1 | - | 2119641-1 | FEED CAM, AIR FEED | 248 | |
| - | 1 | 1 | 1 | 1 | 2119082-5 | CAM, SNAIL, INSULATION ADJUSTMENT | 244 | |
| - | 1 | 1 | 1 | 1 | 2079764-1 | WASHER, WAVE SPRING, CREST-TO-CREST | 243 | |
| - | 1 | 1 | 1 | 1 | 2119083-1 | RETAINER, INSULATION DIAL | 242 | |
| - | 2 | 2 | 2 | 2 | 7-18023-7 | SCR, SKT HD CAP M3 X 4.0 | 241 | |
| - | - | 1 | - | 1 | 2119580-1 | MECHANICAL FEED ASSEMBLY | 239 | |
| - | 1 | - | 1 | - | 2844940-1 | AIR FEED MODULE | 238 | |
| - | 1 | 1 | 1 | 1 | 356885-4 | STOP, SHEAR | 237 | |
| - | REF | REF | REF | REF | 994970-2 | COUNTER, MAGNETIC | 164 | |
| - | 1 | 1 | 1 | 1 | 1-18028-2 | WASHER, FLAT, REG M4 | 119 | |
| - | 1 | 1 | 1 | 1 | 2844908-1 | SCREW, LOCKING | 99 | |
| - | 1 | 1 | 1 | 1 | 2844907-1 | POST, LOCKING | 98 | |
| - | 1 | 1 | 1 | 1 | 1-455888-1 | SPACER, CRIMPER | 82 | |
| - | 1 | 1 | 1 | 1 | 5-547505-2 | SPRING, COMPRESSION | 77 | |
| - | 1 | 1 | 1 | 1 | 854769-4 | HOLDER, INS | 74 | |
| - | 1 | 1 | 1 | 1 | 1803607-3 | DOCUMENTATION PACKAGE | 71 | |
| - | 1 | 1 | 1 | 1 | 2119740-1 | TAG IDENTIFICATION | 67 | |
| - | 2 | 2 | 2 | 2 | 2168078-1 | SCREW, DRIVE, RH, RoHS, 2 x .188 | 66 | |
| - | 1 | 1 | 1 | 1 | 2168083-2 | SCR, SKT HD CAP, RoHS, M4 X 8.0 | 60 | |
| - | 1 | 1 | 1 | 1 | 5-18022-5 | SCR, HEX HD CAP, M4 X 6.0 | 59 | |
| - | 1 | 1 | 1 | 1 | 21028-2 | PIN, SLOTTED SPRING .062 X .250 | 58 | |
| - | 1 | 1 | 1 | 1 | 1338685-1 | PAWL, FEED | 56 | |
| - | 4 | 4 | 4 | 4 | 2168083-3 | SCR, SKT HD CAP, RoHS, M4 X 12.0 | 54 | |
| - | 2 | 2 | 2 | 2 | 2168083-3 | SCR, SKT HD CAP, RoHS, M4 X 12.0 | 53 | |
| - | 1 | 2 | 1 | 2 | 18023-9 | SCR, SKT HD CAP M4 X 6.0 | 49 | |
| - | - | 1 | - | 1 | 2119652-1 | FEED CAM, PRE FEED | 48 | |
| - | - | 1 | - | 1 | 2119653-1 | FEED CAM, POST FEED | 47 | |
| - | 1 | 1 | 1 | 1 | 1803583-9 | APPLICATOR BASIC ASSEMBLY, SF | 46 | |
| - | 1 | 1 | 1 | 1 | 1803515-1 | RAM ASSEMBLY, SF ATLANTIC | 44 | |
| - | 1 | 1 | 1 | 1 | 1803602-1 | SCR, BHSC, RoHS (M8 X 25) | 41 | |
| - | 2 | 2 | 2 | 2 | 2079383-5 | SCR, BHSC, RoHS (M4 X 20) | 33 | |
| - | 2 | 2 | 2 | 2 | 2-2844962-3 | SPACER, CYLINDRICAL, STRIP GUIDE | 30 | |
| - | 1 | 1 | 1 | 1 | 2844992-1 | ASSEMBLY, STRIP GUIDE | 29 | |
| - | 1 | 1 | 1 | 1 | 455888-3 | SPACER, CRIMPER | 28 | |
| - | 1 | 1 | 1 | 1 | 1320928-2 | STRIP GUIDE | 24 | |
| - | 1 | 1 | 1 | 1 | 2168083-2 | SCR, SKT HD CAP, RoHS, M4 X 8.0 | 21 | |
| - | 1 | 1 | 1 | 1 | 1-18028-2 | WASHER, FLAT, REG M4 | 20 | |
| - | 1 | 1 | 1 | 1 | 2119533-1 | STRIPPER, SIDE FEED | 19 | |
| - | 1 | 1 | 1 | 1 | 1-690518-9 | HOLD DOWN, TERMINAL | 18 | |
| - | 1 | 1 | 1 | 1 | 690463-1 | FLOATING SHEAR, REAR | 17 | |
| - | 2 | 2 | 2 | 2 | 1-2168083-1 | SCR, SKT HD CAP, RoHS, M3 X 6 | 16 | |
| - | 1 | 1 | 1 | 1 | 1-690464-4 | SHEAR PLATE, REAR | 15 | |
| - | 1 | 1 | 1 | 1 | 2119862-1 | SHEAR HOLDER, REAR | 14 | |
| - | 2 | 2 | 2 | 2 | 2119806-1 | INSERT, SHEAR | 13 | |
| - | 2 | 2 | 2 | 2 | 3-22280-3 | SPRING, COMPRESSION | 12 | |
| - | 1 | 1 | 1 | 1 | 1-356885-4 | STOP, SHEAR | 11 | |
| - | 1 | 1 | 1 | 1 | 2119805-1 | SHEAR HOLDER, FRONT | 10 | |
| - | 1 | 1 | 1 | 1 | 1633861-1 | SHEAR, FLOATING | 9 | |
| - | 1 | 2 | 2 | 1 | 1803057-5 | ANVIL, COMBINATION | 8 | |
| - | - | - | - | - | - | - | 7 | |
| - | 1 | 1 | 1 | 1 | 690468-1 | DEPRESSOR SHEAR, REAR | 6 | |
| - | 1 | 1 | 1 | 1 | 2119780-9 | DEPRESSOR, SHEAR | 5 | |
| - | 1 | 1 | 1 | 1 | 1-238011-3 | BLOCK, CRIMPER SPACER | 4 | |
| - | 1 | 2 | 2 | 1 | 1-2119784-2 | CRIMPER, INSULATION O PREMIUM | 3 | |
| - | 1 | 1 | 1 | 1 | 455888-6 | SPACER, CRIMPER | 2 | |
| - | 1 | 2 | 2 | 1 | 3-456402-4 | CRIMPER, WIRE PREMIUM | 1 | |
| - | 77 | 72 | 71 | 2 | -1 | PART NO | DESCRIPTION | ITEM NO |

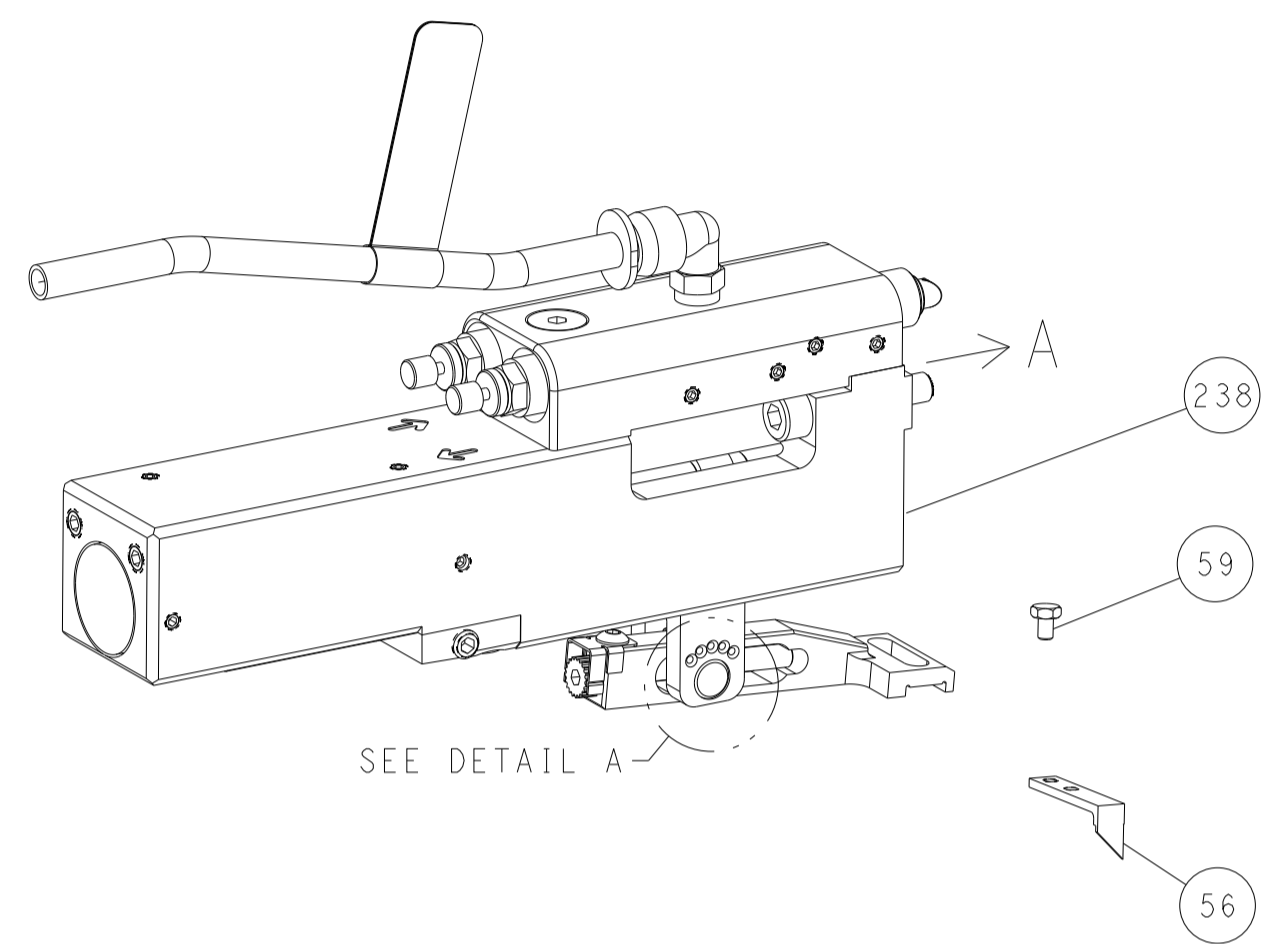
| | | | | | |
|-------------|---|--|----------------------|--------------------------|---|
| DIMENSIONS: | | TOLERANCES UNLESS OTHERWISE SPECIFIED: | | OWN: STAKEM 03JAN2012 | TE Connectivity Harrisburg, PA 17105-3608 |
| mm | 0 PLC ± 1 PLC ± 2 PLC ± 3 PLC ± 4 PLC ± ANGLES ± | FINISH | OTHERWISE SPECIFIED: | CHK: G. BAILEY 03JAN2012 | |
| MATERIAL: | | | | APVD: T. ELBIN 03JAN2012 | NAME: Ocean Side Feed Applicator |
| | | | | APPLICATION SPEC: | SIZE: A1 CAGE CODE: 00779 DRAWING NO: C=2151844 |
| | | | | WEIGHT: | RESTRICTED TO: Customer Accessible Production Drawing SCALE: 1:2 SHEET 1 OF 4 REV C |

| LOC | DIST | REVISIONS | | | | | |
|-----|------|-----------|-----|-------------|------|-----|------|
| A | 66 | P | LYN | DESCRIPTION | DATE | DWN | APVD |
| | | - | | SEE SHEET 1 | | - | - |
| | | | | | | | |
| | | | | | | | |

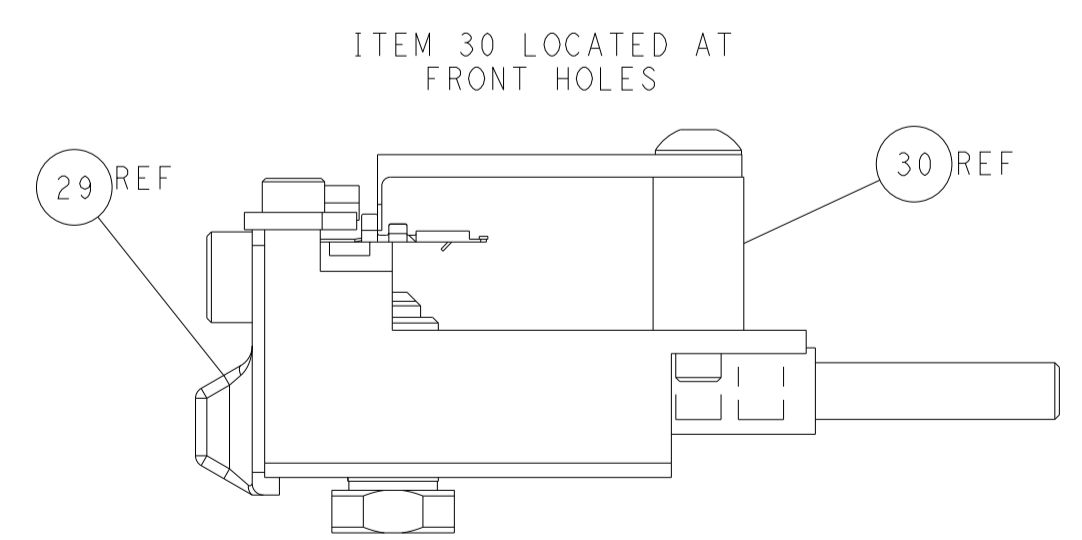
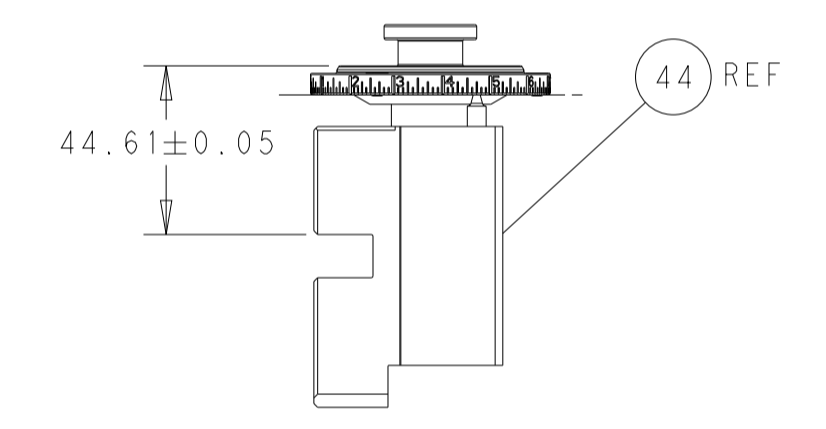
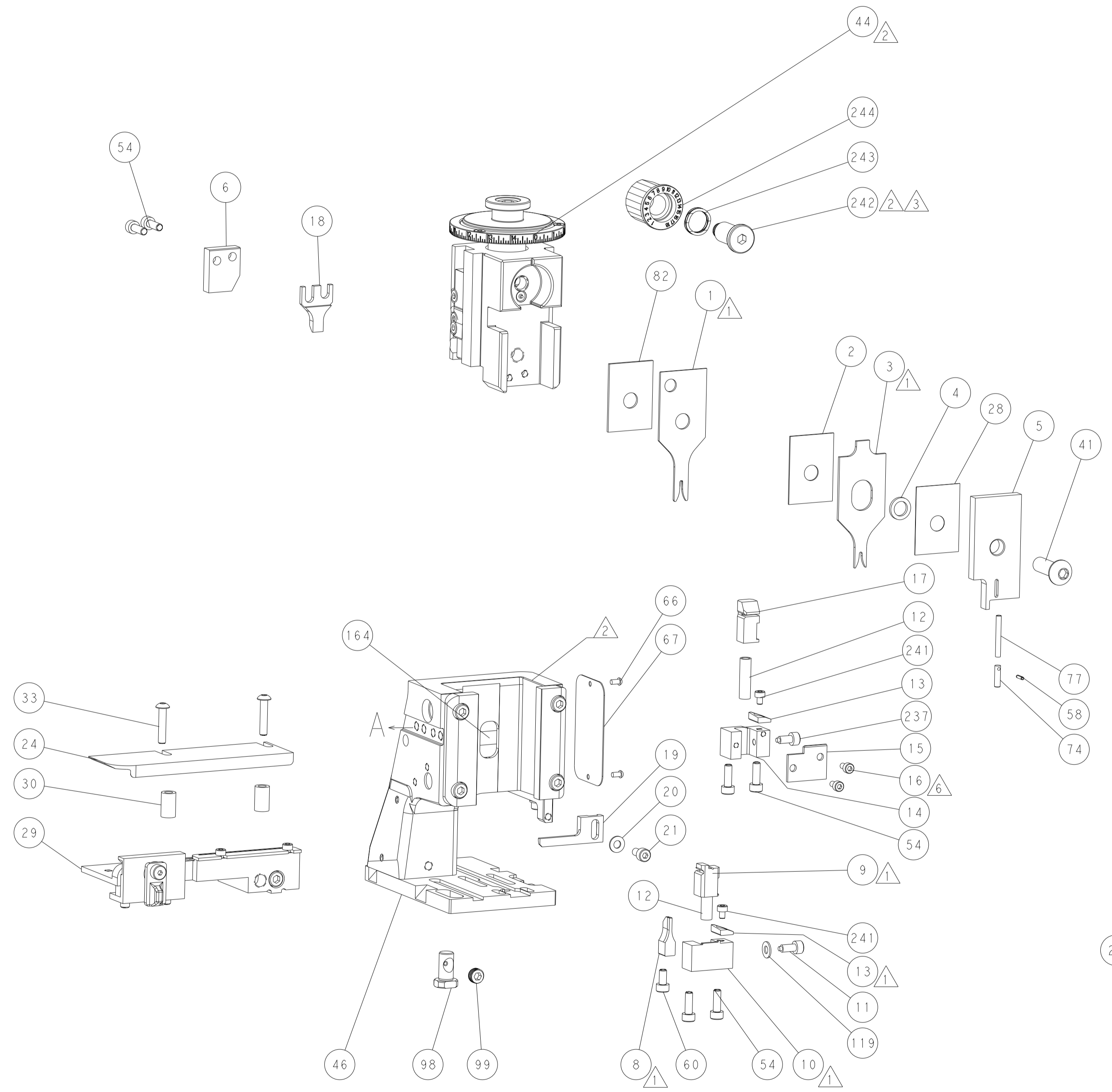
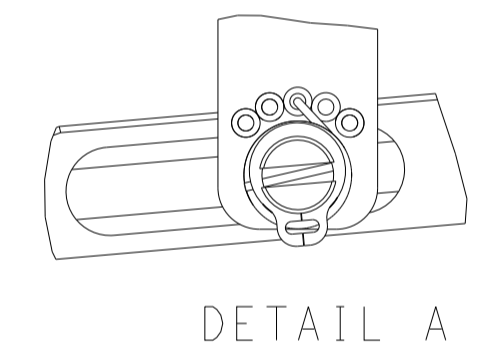
FEED TYPE MECHANICAL



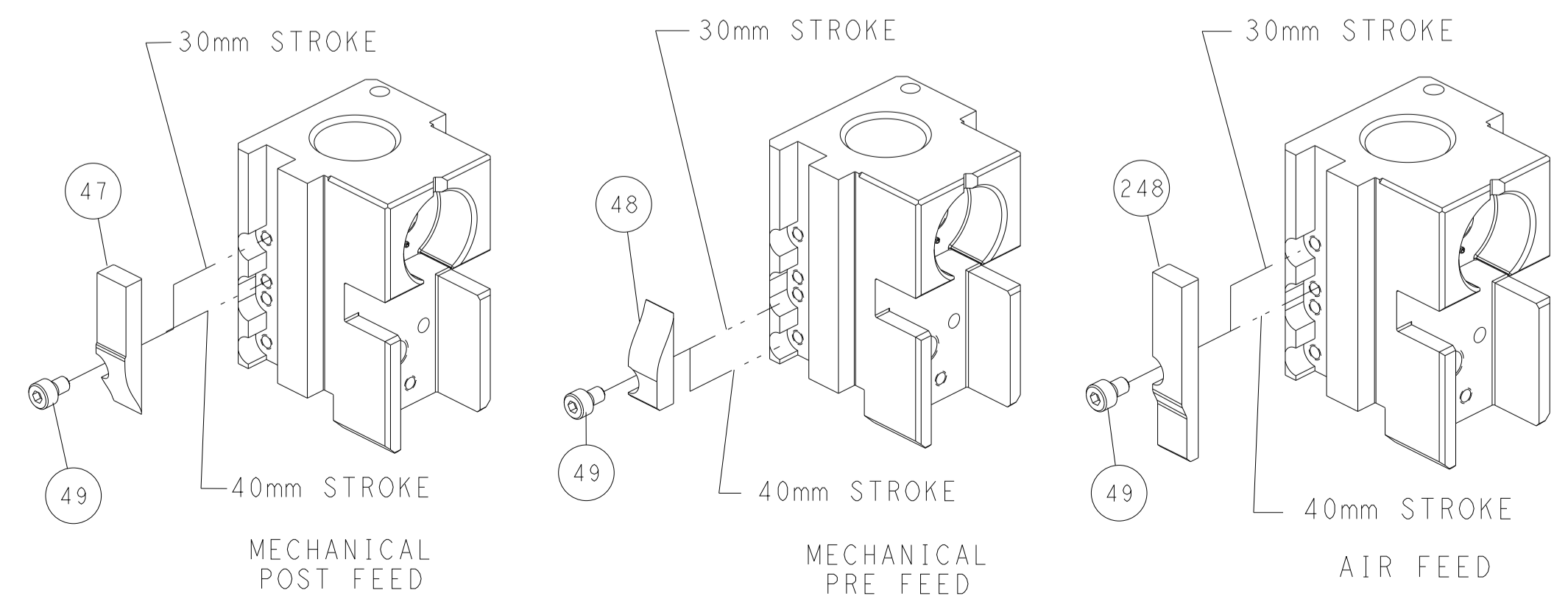
PNEUMATIC



FEED SPRING SETTING POSITION (SHOWN FROM REAR SIDE)



CAM POSITIONS



ATLANTIC VERSION
 Shown on sheets 1 of 4 & 2 of 4
 (Pacific version shown on sheets 3 of 4 & 4 of 4)

| DIMENSIONS: | | TOLERANCES UNLESS OTHERWISE SPECIFIED: | | DWG | | TE Connectivity | |
|-------------|---------|--|----------|--|------|-----------------|-----------|
| mm | 0 PLC ± | 1 PLC ± | 2 PLC ± | 03JAN2012 | NAME | SIZE | CAGE CODE |
| | 3 PLC ± | 4 PLC ± | ANGLES ± | 03JAN2012 | APVD | 00779 | 2151844 |
| MATERIAL | FINISH | WEIGHT | SCALE | Customer Accessible Production Drawing | 1:2 | SHEET 2 OF 4 | REV C |

| PART NUMBER | REVISION | DESCRIPTION | FEED TYPE |
|-------------|----------|--------------------------|------------|
| 2-2151844-1 | C | FINE CRIMP HEIGHT ADJUST | MECHANICAL |
| 2-2151844-2 | C | FINE CRIMP HEIGHT ADJUST | PNEUMATIC |
| 7-2151844-7 | A | CRIMP TOOLING KIT | - |

PACIFIC VERSION TERMINATOR
 INTERFACE ADAPTER



| APPLICATOR DATA | | |
|--------------------------------------|----------------|------|
| CRIMP | SIZE | TYPE |
| WIRE | 1.40 mm [.055] | F |
| INSUL | 1.78 mm [.070] | O |
| APPLICATOR INSTRUCTIONS 408-35042 | | |

| TERMINAL DATA: HIROSE TERMINAL HIROSE CRIMP SPECIFICATION | | | |
|---|-----------------|------------------------------|-----------------|
| TERMINAL NAME: SOCKET | | | |
| WIRE STRIP LENGTH | | INSULATION DIAMETER RANGE | |
| 2.50-3.30 mm [.098-.130 IN] | | Ø1.14-1.60 mm [.045-.063 IN] | |
| TERMINAL APPLICATION SPECIFICATION | TAD5024-014 | | |
| TERMINALS APPLIED | | | |
| TE TERMINAL | HIROSE TERMINAL | TE TERMINAL | HIROSE TERMINAL |
| 286588-1 | DF1B-2428SCF | 286588-2 | DF1B-2428SCFA |

| WIRE SIZE | CRIMP HEIGHT mm [INCH] | CRIMP HEIGHT REFERENCE SETTING |
|-----------|----------------------------|--------------------------------|
| 24 AWG | 0.83+/-0.05 [.033+/-0.002] | 9.9 |
| 26 AWG | 0.79+/-0.05 [.031+/-0.002] | 10.3 |
| 28 AWG | 0.77+/-0.05 [.030+/-0.002] | 10.5 |



- △ RECOMMENDED SPARE PARTS
- △ REFER TO SUPPLIED INSTRUCTION SHEET FOR CLEANING, LUBRICATION AND STORAGE OF APPLICATOR.
- △ APPLY PART NUMBER 2-23419-6 LOCTITE TO THREADS OF ITEM 242.
- △ CRIMP HEIGHT REFERENCE SETTING WAS THE SETTING USED WHEN THE APPLICATOR WAS QUALIFIED AT THE FACTORY. ADJUSTMENT MAY BE NECESSARY WHEN RUNNING APPLICATOR IN THE FIELD.
- 5. UNLESS SPECIFIED OTHERWISE TORQUE VALUES SHALL BE USED PER DOCUMENT, 101-35000.
- △ CUT TO LENGTH AT ASSEMBLY.

***WARNING**
 ON INSTALLATION, SET WIRE DISC TO CRIMP HEIGHT REFERENCE SETTING FOR LARGEST WIRE SIZE. CRIMP HEIGHT REFERENCE SETTINGS GREATER THAN THE VALUE SHOWN MAY CAUSE DAMAGE TO THE CRIMP TOOLING, REFER TO THE INSTRUCTION SHEET FOR PROPER SETUP AND ADJUSTMENTS.

PACIFIC VERSION
 Shown on sheets 3 of 4 & 4 of 4
 (Atlantic version shown on sheets 1 of 4 & 2 of 4)

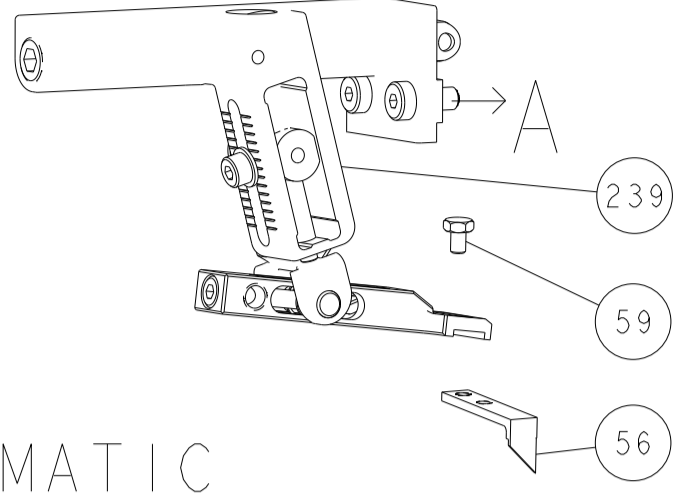
| LOC | DIST | REVISIONS | | | | | |
|-----|------|-----------|-----|-------------|------|-----|------|
| A | 66 | P | LTN | DESCRIPTION | DATE | OWN | APVD |
| - | - | - | - | SEE SHEET 1 | - | - | - |

| | | | | | |
|---|-----|-----|-------------|-------------------------------------|-----|
| - | 1 | 1 | 2119082-5 | CAM, SNAIL, INSULATION ADJUSTMENT | 244 |
| - | 1 | 1 | 2079764-1 | WASHER, WAVE SPRING, CREST-TO-CREST | 243 |
| △ | - | 1 | 2119083-1 | RETAINER, INSULATION DIAL | 242 |
| - | 2 | 2 | 7-18023-7 | SCR, SKT HD CAP M3 X 4.0 | 241 |
| - | - | 1 | 2119580-1 | MECHANICAL FEED ASSEMBLY | 239 |
| - | 1 | - | 2844940-1 | AIR FEED MODULE | 238 |
| - | 1 | 1 | 356885-4 | STOP, SHEAR | 237 |
| - | REF | REF | 994970-2 | COUNTER, MAGNETIC | 164 |
| - | 1 | - | 2119641-2 | FEED CAM, AIR FEED | 151 |
| - | 1 | 1 | 2168083-8 | SCR, SKT HD CAP, RoHS, M4 X 16 | 144 |
| - | 4 | 4 | 2168083-9 | SCR, SKT HD CAP, RoHS, M4 X 20 | 143 |
| - | - | 1 | 2119653-2 | FEED CAM, POST FEED | 142 |
| - | 1 | 1 | 1-1803583-0 | APPLICATOR BASIC ASSEMBLY, SF | 141 |
| - | 1 | 1 | 1803516-1 | RAM ASSEMBLY, SF PACIFIC | 140 |
| - | 1 | 1 | 1-18028-2 | WASHER, FLAT, REG M4 | 119 |
| - | 1 | 1 | 2844908-1 | SCREW, LOCKING | 99 |
| - | 1 | 1 | 2844907-1 | POST, LOCKING | 98 |
| - | 1 | 1 | 1-455888-1 | SPACER, CRIMPER | 82 |
| - | 1 | 1 | 5-547505-2 | SPRING, COMPRESSION | 77 |
| - | 1 | 1 | 854769-4 | HOLDER, INS | 74 |
| - | 1 | 1 | 1803607-3 | DOCUMENTATION PACKAGE | 71 |
| - | 1 | 1 | 2119740-1 | TAG, IDENTIFICATION | 67 |
| - | 2 | 2 | 2168078-1 | SCREW, DRIVE, RH, RoHS, 2 x .188 | 66 |
| - | 1 | 1 | 5-18022-5 | SCR, HEX HD CAP, M4 X 6.0 | 59 |
| - | 1 | 1 | 21028-2 | PIN, SLOTTED SPRING .062 X .250 | 58 |
| - | 1 | 1 | 1338685-1 | PAWL, FEED | 56 |
| - | 2 | 2 | 2168083-3 | SCR, SKT HD CAP, RoHS, M4 X 12.0 | 53 |
| - | 1 | 2 | 18023-9 | SCR, SKT HD CAP M4 X 6.0 | 49 |
| - | - | 1 | 2119652-1 | FEED CAM, PRE FEED | 48 |
| - | 1 | 1 | 1803602-1 | SCR, BHSC, RoHS (M8 X 25) | 41 |
| - | 2 | 2 | 2079383-5 | SCR, BHSC, RoHS (M4 X 20) | 33 |
| - | 2 | 2 | 2-2844962-3 | SPACER, CYLINDRICAL, STRIP GUIDE | 30 |
| - | 1 | 1 | 2844992-1 | ASSEMBLY, STRIP GUIDE | 29 |
| - | 1 | 1 | 455888-3 | SPACER, CRIMPER | 28 |
| - | 1 | 1 | 1320928-2 | STRIP GUIDE | 24 |
| - | 1 | 1 | 2168083-2 | SCR, SKT HD CAP, RoHS, M4 X 8.0 | 21 |
| - | 1 | 1 | 1-18028-2 | WASHER, FLAT, REG M4 | 20 |
| - | 1 | 1 | 2119533-1 | STRIPPER, SIDE FEED | 19 |
| - | 1 | 1 | 1-690518-9 | HOLD DOWN, TERMINAL | 18 |
| - | 1 | 1 | 690463-1 | FLOATING SHEAR, REAR | 17 |
| △ | - | 2 | 1-2168083-1 | SCR, SKT HD CAP, RoHS, M3 X 6 | 16 |
| - | 1 | 1 | 1-690464-4 | SHEAR PLATE, REAR | 15 |
| - | 1 | 1 | 2119862-1 | SHEAR HOLDER, REAR | 14 |
| - | 2 | 2 | 2119806-1 | INSERT, SHEAR | 13 |
| - | 2 | 2 | 3-22280-3 | SPRING, COMPRESSION | 12 |
| - | 1 | 1 | 1-356885-4 | STOP, SHEAR | 11 |
| - | 1 | 1 | 2119805-1 | SHEAR HOLDER, FRONT | 10 |
| △ | - | 1 | 1633861-1 | SHEAR, FLOATING | 9 |
| △ | 1 | 1 | 1803057-5 | ANVIL, COMBINATION | 8 |
| - | - | - | - | - | 7 |
| - | 1 | 1 | 690468-1 | DEPRESSOR SHEAR, REAR | 6 |
| - | 1 | 1 | 2119780-9 | DEPRESSOR, SHEAR | 5 |
| - | 1 | 1 | 1-238011-3 | BLOCK, CRIMPER SPACER | 4 |
| △ | 1 | 1 | 1-2119784-2 | CRIMPER, INSULATION O PREMIUM | 3 |
| - | 1 | 1 | 455888-6 | SPACER, CRIMPER | 2 |
| △ | 1 | 1 | 3-456402-4 | CRIMPER, WIRE PREMIUM | 1 |

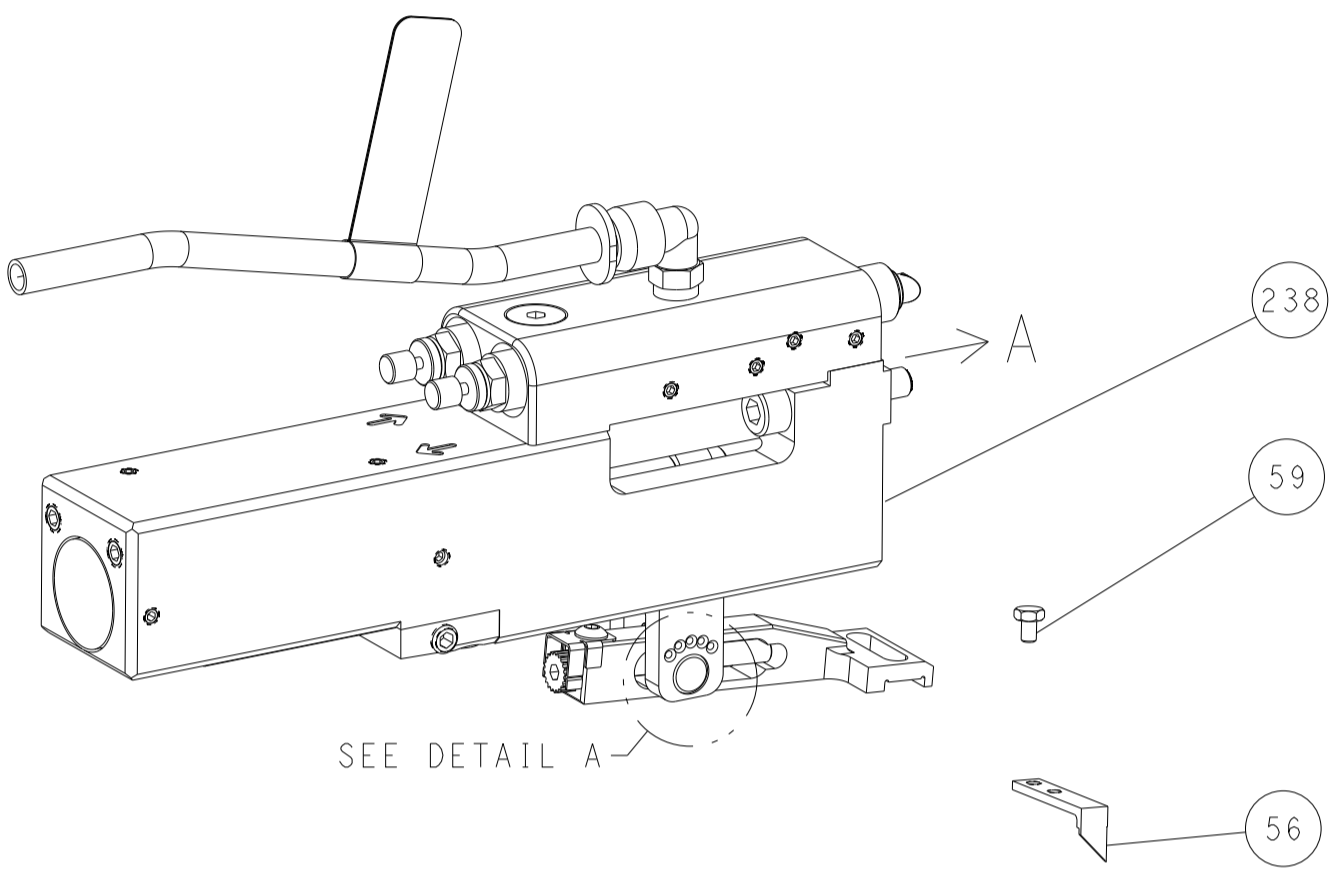
| DIMENSIONS: | | TOLERANCES UNLESS OTHERWISE SPECIFIED: | | MATERIAL: | | FINISH: | | WEIGHT: | | SCALE: | |
|-------------|---------|--|---------|-----------|---------|---------|--------|---------|--|--------|--|
| mm | 0 PLC ± | 1 PLC ± | 2 PLC ± | 3 PLC ± | 4 PLC ± | ANGLES | FINISH | | | | |
| | | | | | | | | | | | |

| LOC | DIST | REVISIONS | | | |
|-----|------|-----------|-------------|----|------|
| | | REV | DATE | BY | APPV |
| A | 66 | - | SEE SHEET 1 | - | - |

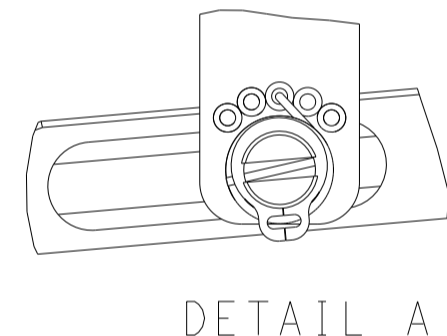
FEED TYPE MECHANICAL



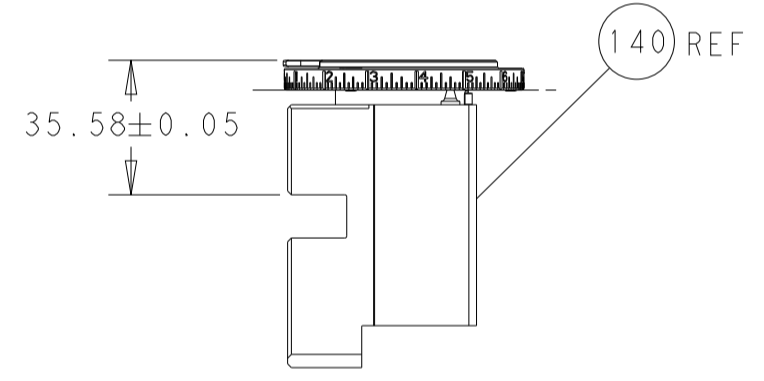
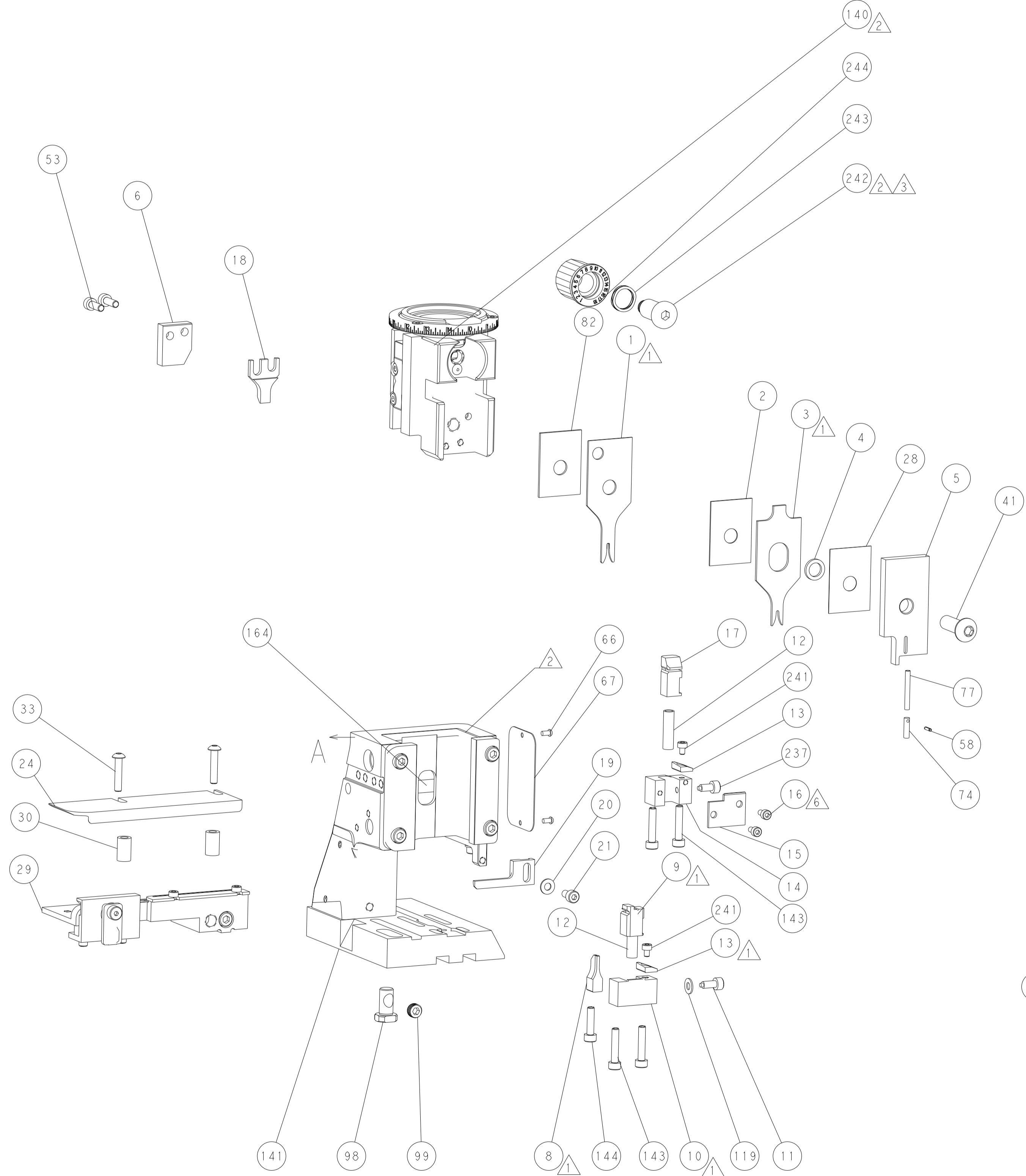
PNEUMATIC



FEED SPRING SETTING POSITION (SHOWN FROM REAR SIDE)

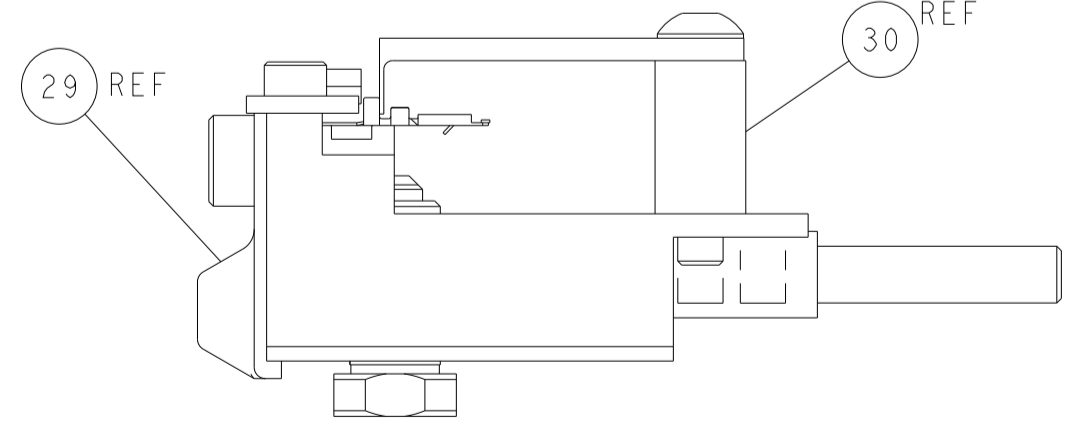


DETAIL A



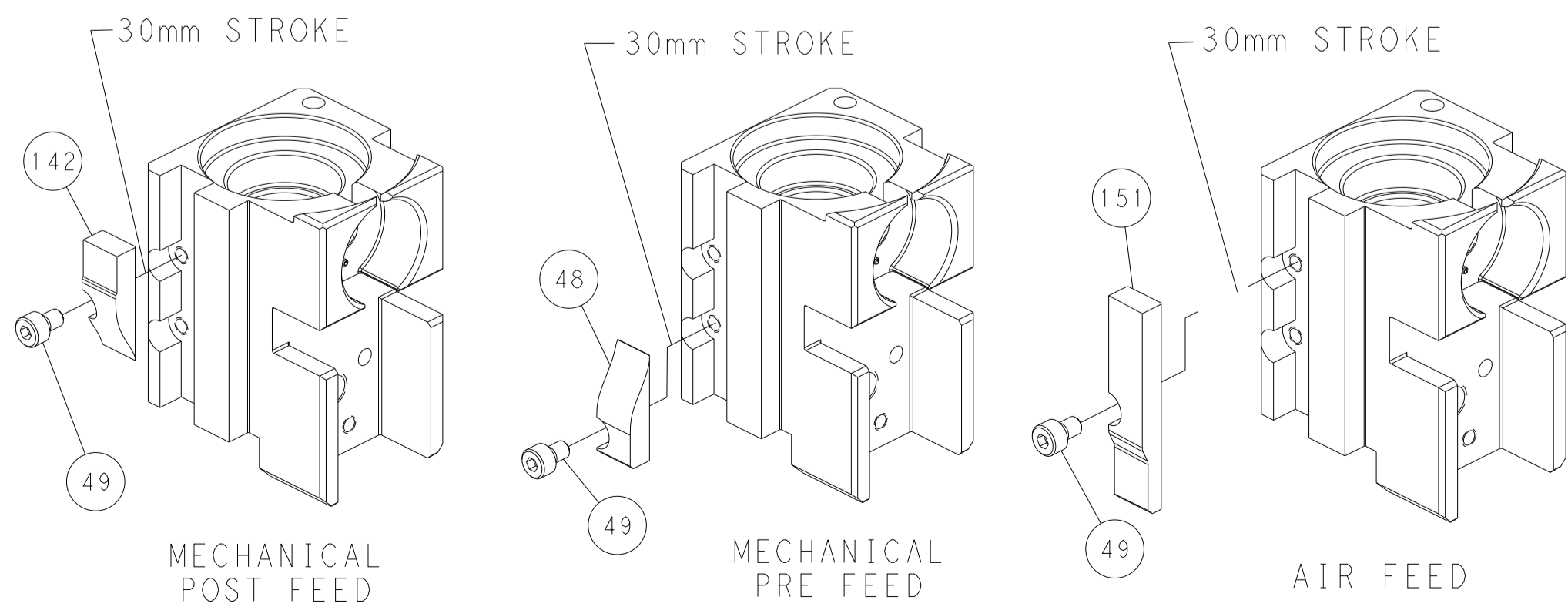
RAM SET-UP

ITEM 30 LOCATED AT FRONT HOLES



FEED TRACK POSITION GUIDE BY INSULATION BARREL

CAM POSITIONS



MECHANICAL POST FEED

MECHANICAL PRE FEED

AIR FEED

PACIFIC VERSION
 Shown on sheets 3 of 4 & 4 of 4
 (Atlantic version shown on sheets 1 of 4 & 2 of 4)

| | | | |
|--|--|---|---|
| <small>THIS DRAWING IS A CONTROLLED DOCUMENT FOR TYCO ELECTRONICS CORPORATION. IT IS THE PROPERTY OF COMPANY AND IS NOT TO BE REPRODUCED OR TRANSMITTED IN ANY FORM OR BY ANY MEANS, ELECTRONIC OR MECHANICAL, WITHOUT THE WRITTEN PERMISSION OF TYCO ELECTRONICS CORPORATION.</small> | | DWN: R. STAKEM 03JAN2012 CHK: G. BAILEY 03JAN2012 APVD: T. ELBIN 03JAN2012 | NAME: TE Connectivity Harrisburg, PA 17105-3608 |
| DIMENSIONS: mm TOLERANCES UNLESS OTHERWISE SPECIFIED: 0 PLC ± 1 PLC ± 2 PLC ± 3 PLC ± 4 PLC ± ANGLES FINISH ± | | PRODUCT SPEC: APPLICATION SPEC: SIZE: A1 CAGE CODE: 00779 DRAWING NO: C=2151844 | RESTRICTED TO: - SCALE: 1:2 SHEET: 4 OF 4 REV: C |
| MATERIAL: - | | WEIGHT: - Customer Accessible Production Drawing | SHEETS 1 & 2 ARE NOT REQUIRED FOR PACIFIC VERSION |