

mat'l. code		-		surface	-	tolerance	ASME_Y14.5	projection	product family	PCI_EXPRESS		
lfr	ecn no	dr	date	tolerances unless otherwise specified				MM	title			
				angles	Line	.0±0.30		scale	N/A			
				±2'	Line	.00±0.20			MINI_PCIE			
				dr	WINSTON_ZHU	2020-05-12			6.8MM_HEIGHT			
				enfr	ZHENHUA_LIU	2020-05-12		<b>Amphenol FCi</b>	dwg no		sheet 1 of 5	
				chr					10152143		size	A4
				appd	HEAVEN_CEN	2020-05-12			type		CUSTOMER Drawing	
sheet index	revision	A										

NOTES:

1. MATERIAL:

HOUSING: HIGH TEMPERATURE PLASTIC, UL94 V-0, BLACK COLOR,  
CONTACTS: COPPER ALLOY  
PEGS: COPPER ALLOY

2. FINISH:

CONTACTS: SELECTED GOLD PLATING ON THE CONTACT AREA,  
1u" GOLD PLATING ON THE SOLDER TAILS,  
50u" NICKEL UNDERPLATING OVER ALL.  
PEGS: 120u" MATTE-TIN OVER 50u" . NICKEL.

3. CARD THICKNESS APPLIES ACROSS TABS AND INCLUDES PLATING AND/OR METALLIZATION.

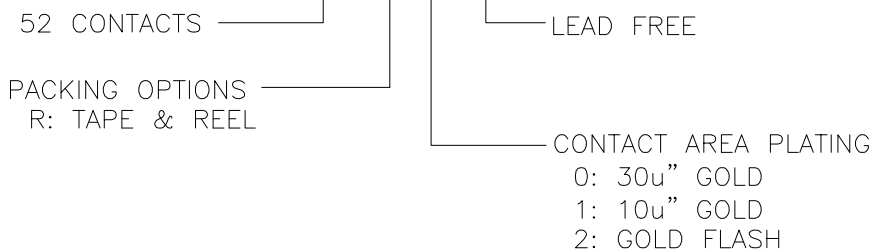
4. EDGE BEVEL MUST BE PRESENT AND FREE OF CUTTING BURRS FROM PCB AND CONTACT MATERIALS.

5. THE HOUSING WILL WITHSTAND EXPOSURE TO 260°C PEAK TEMPERATURE FOR  
10 SECONDS IN RE-FLOW APPLICATION.

6. PRODUCT SPECIFICATION:GS-12-1513

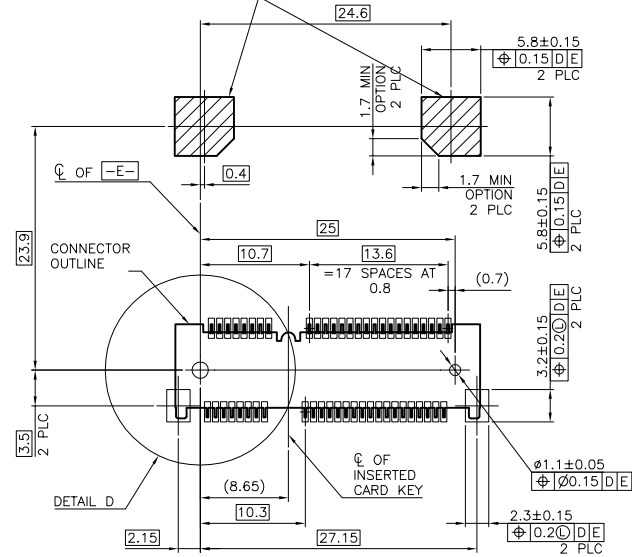
PRODUCT NUMBER CODE

10152143- 052 R X LF

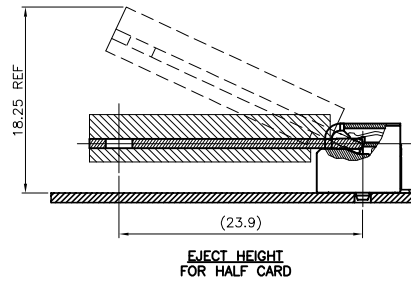
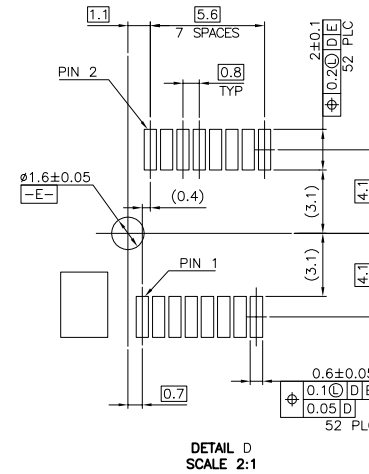


mat'l. code		-		surface	-	tolerance	ASME_Y14.5	projection	product family	PCI_EXPRESS	
ltr	ecn no	dr	date	tolerances unless otherwise specified					title		
				angles	linear	.0±.0.30		MM	MINI_PCI_EXPRESS		
				±2'	linear	.00±.0.20		scale N/A	6.8MM_HEIGHT		
		dr	WINSTON_ZHU	2020-05-12				<b>Amphenol FCi</b>	dwg no		sheet 2 of 5
		enfr	ZHENHUA_LIU	2020-05-12					10152143		A4
		chr	HEAVEN_CEN	2020-05-12					type		CUSTOMER Drawing
sheet index	revision sheet	A									

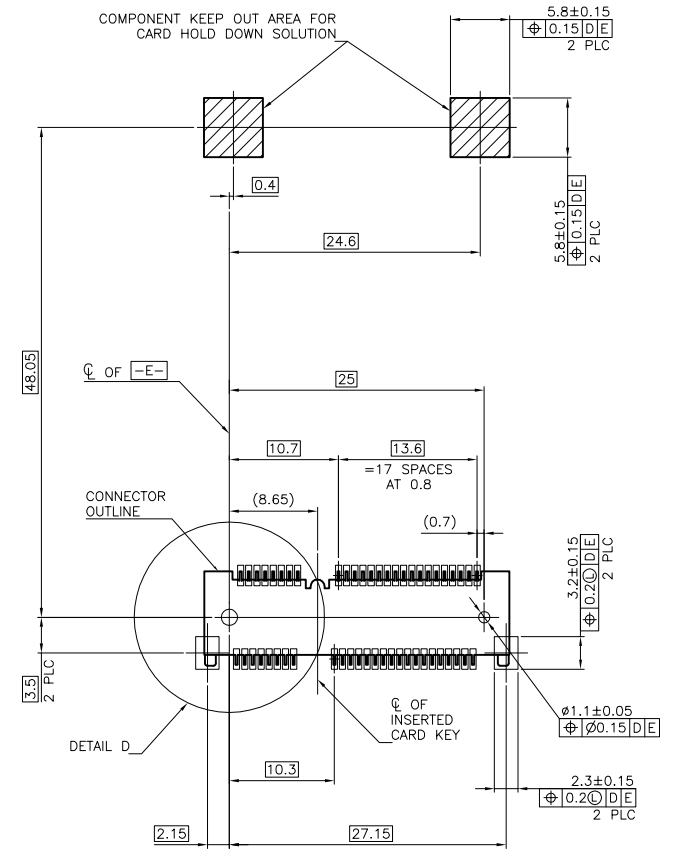
COMPONENT KEEP OUT AREA FOR  
CARD HOLD DOWN SOLUTION



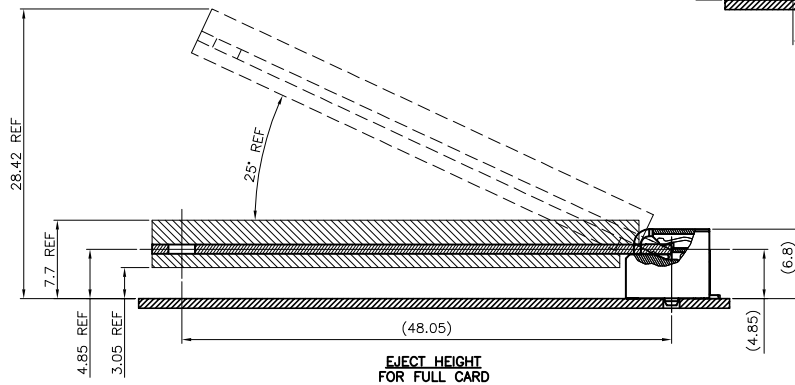
-D- IS THE TOP SURFACE OF PCB.  
**RECOMMENDED P.C. BOARD PATTERN LAYOUT  
FOR HALF CARD CONNECTOR  
(TOP VIEW)**



COMPONENT KEEP OUT AREA FOR  
CARD HOLD DOWN SOLUTION

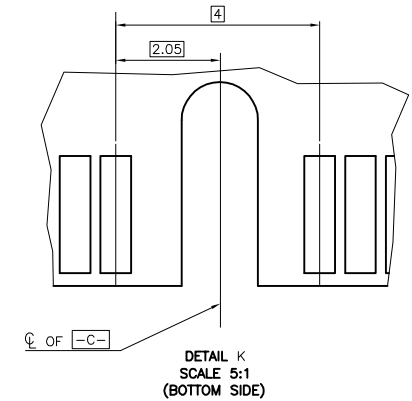
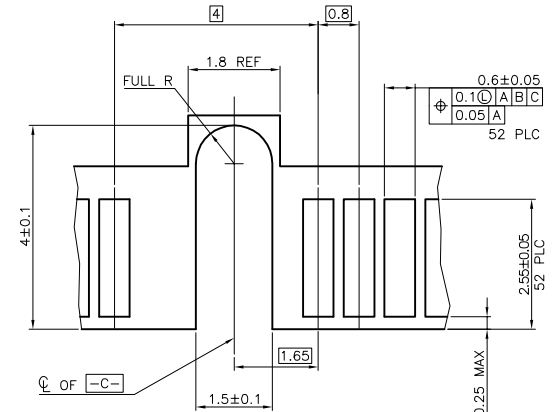
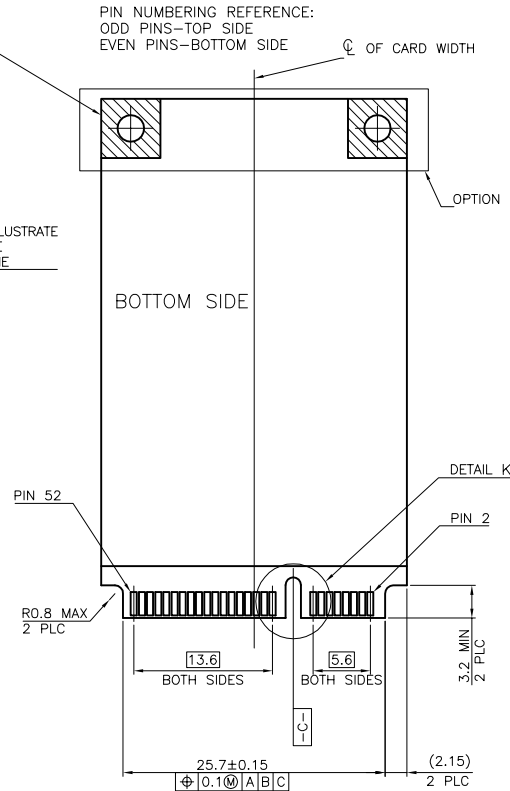
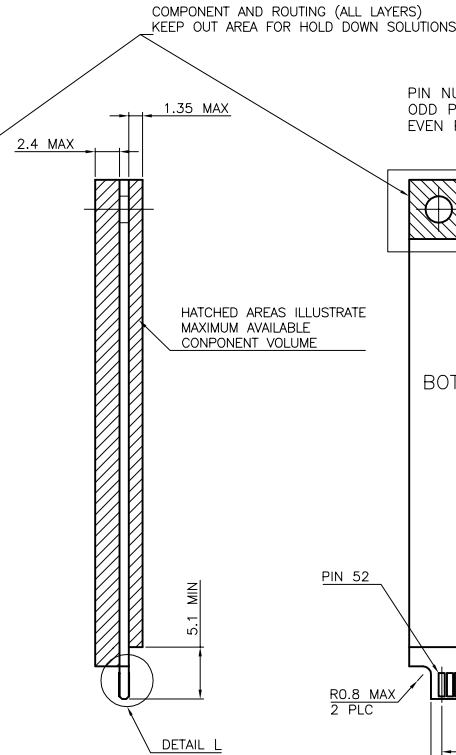
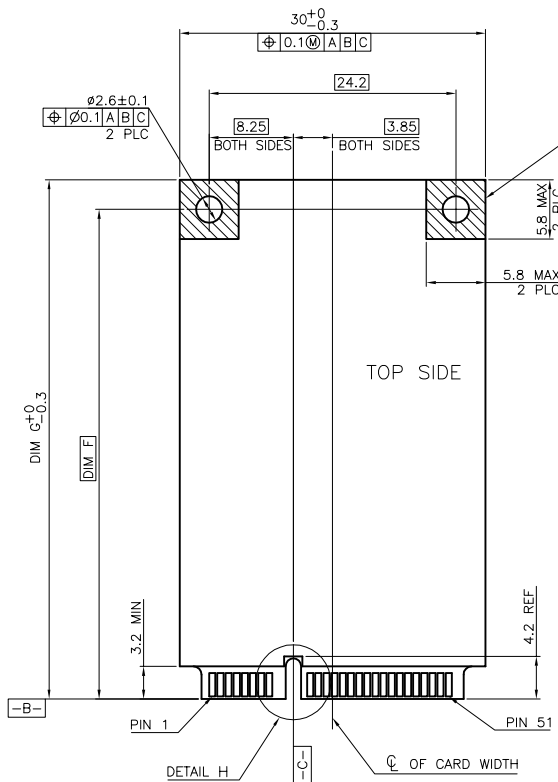


-D- IS THE TOP SURFACE OF PCB.  
**RECOMMENDED P.C. BOARD PATTERN LAYOUT  
FOR FULL CARD CONNECTOR  
(TOP VIEW)**



mat'l. code	-	surface	-	tolerance	ASME_Y14.5	projection	MM	product family	PCI_EXPRESS
lfr	ecn no	dr	date	tolerances unless otherwise specified		MM	MM	title	MINI_PCIE
18				angles	.02±0.30	MM	MM	6.8MM_HEIGHT	5
				±2'	.00±0.20	scale N/A	scale N/A	dwg no	sheet 3 of 5
				dr	WINSTON_ZHU 2020-05-12	Amphenol FCi	type	CUSTOMER Drawing	size
				enr	ZHENHUA_LIU 2020-05-12				
				chr					
				appd	HEAVEN_CEN 2020-05-12				
sheet index	revision	A							
	sheet								

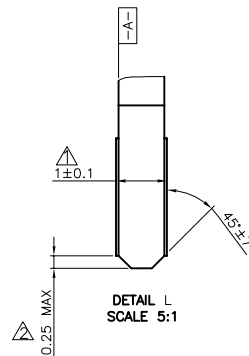
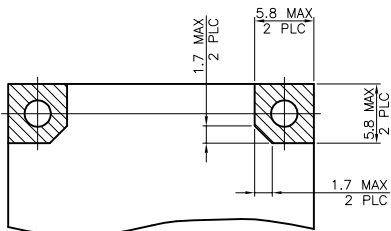
DIM F	DIM G	
48.05	50.95	FULL-MINI CARD
23.9	26.8	HALF-MINI CARD

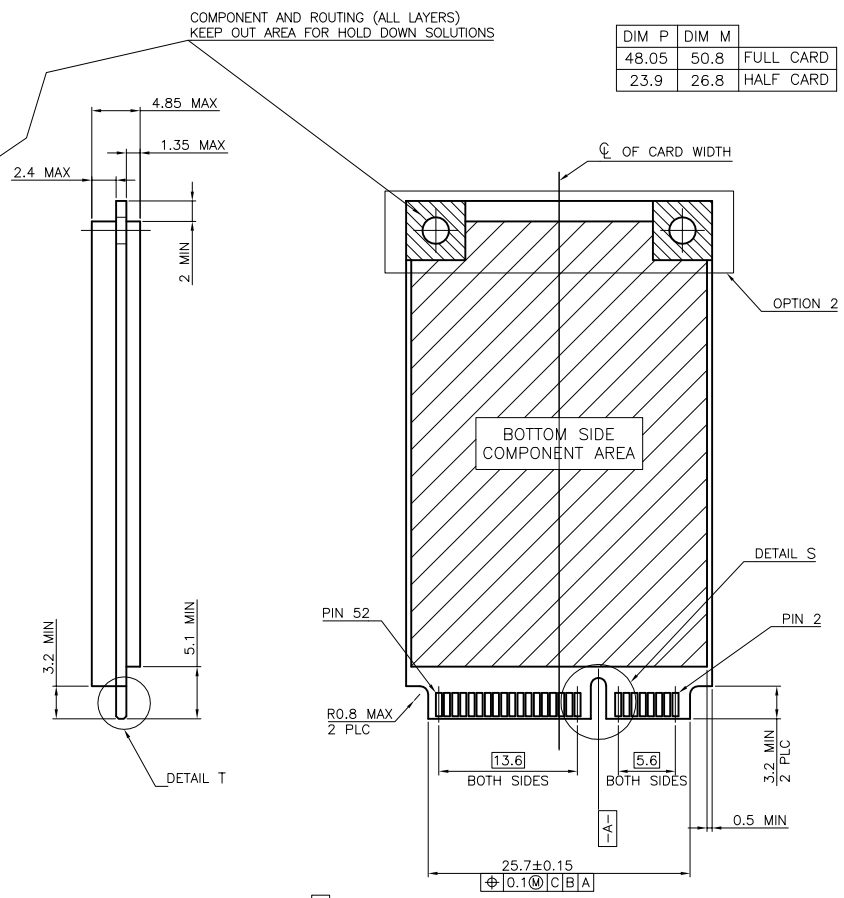
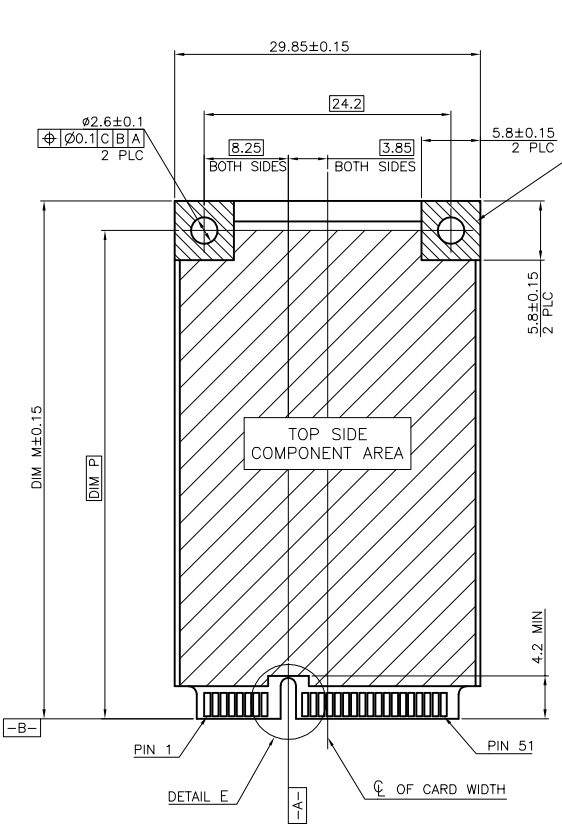


- NOTES:
- ▲ CARD THICKNESS APPLIES ACROSS TABS AND INCLUDES PLATING AND/OR METALLIZATION.
  - ▲ EDGE BEVEL MUST BE PRESENT AND FREE OF CUTTING BURRS FROM PCB AND CONTACT MATERIALS.

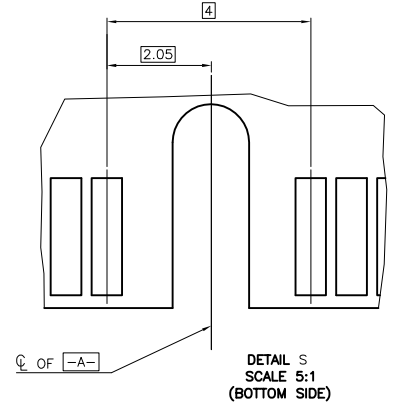
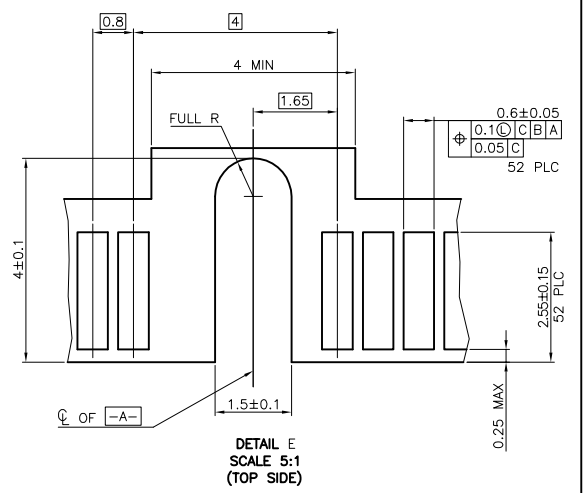
**FOR PCI EXPRESS MINI CARD**

mat'l. code	-	surface	✓ tolerance ASME_Y14.5	projection	product family	PCI_EXPRESS
lfr	ecn no	dr	date	tolerances unless otherwise specified	title	
18				angles	MINI_PCIE	
				LineG	6.8MM_HEIGHT	
				±2'	scale N/A	
		dr	WINSTON_ZHU 2020-05-12		dwg no	
		enfr	ZHENHUA_LIU 2020-05-12		sheet 4 of 5	
		chr			10152143	
		appd	HEAVEN_CEN 2020-05-12		A4	
sheet index	revision	A		type		
	sheet			CUSTOMER Drawing		

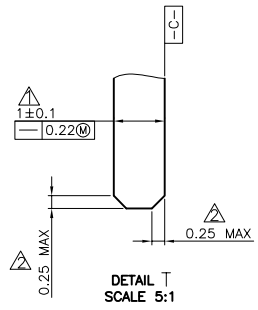
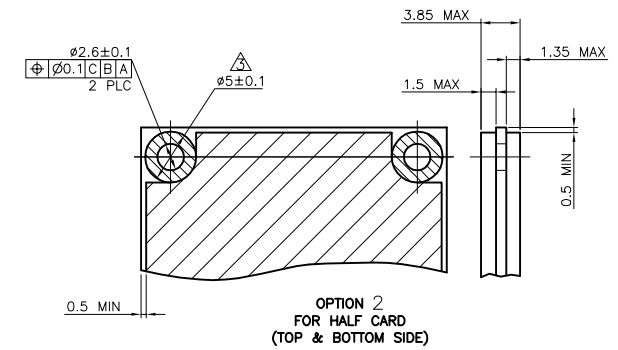




DIM P	DIM M	
48.05	50.8	FULL CARD
23.9	26.8	HALF CARD



- NOTES:
- ▲ CARD THICKNESS APPLIES ACROSS TABS AND INCLUDES PLATING AND/OR METALLIZATION.
  - ▲ EDGE BEVEL MUST BE PRESENT AND FREE OF CUTTING BURRS FROM PCB AND CONTACT MATERIALS.
  - ▲ COMPONENT AND ROUTING (TOP/BOTTOM LAYER) KEEP OUT AREA FOR HOLD DOWN SOLUTIONS.



**FOR mSATA**

mat'l. code	-	surface	-	tolerance	ASME_Y14.5	projection	product family	PCI_EXPRESS
lfr	ecn no	dr	date	tolerances unless otherwise specified		MM	title	
18				angles	.0±0.30	MM	MINI_PCIE	
				LineGr	.00±0.20	scale N/A	6.8MM_HEIGHT	
				±2'	.000±0.10	Amphenol FCi	dwg no	
		dr	WINSTON_ZHU	2020-05-12			sheet 5 of 5	
		enfr	ZHENHUA_LIU	2020-05-12			size	
		chr					10152143	
		appd	HEAVEN_CEN	2020-05-12			type	
sheet	revision	A						
index	sheet							