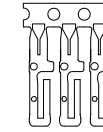
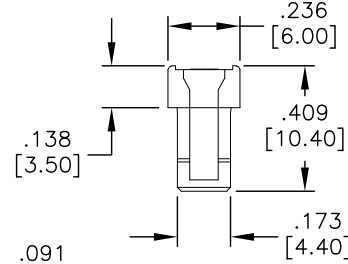
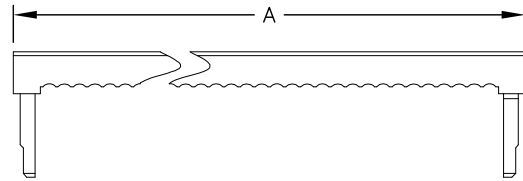
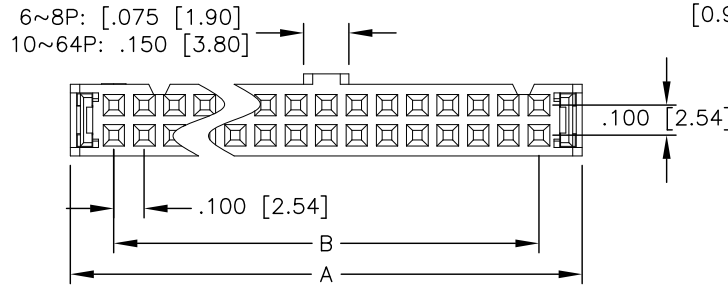
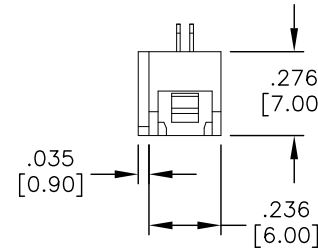
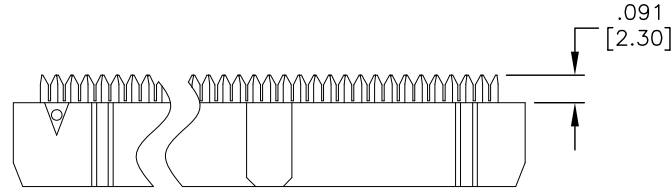


APPROVED: _____
 DATE: _____ TITLE: _____

Rev	AWO #	Description	Date	Appr
-		RELEASED	6/3/05	
A		REDRAW & REVISED	4/07/06	
B		REMOVE STRAIN RELIEF	2/10/09	
C		REDRAWN	11/23/10	
D		REVISED SHAPE	7/26/11	
E		ADDED POSITIONS	10/28/11	
F		UPDATE DRAWING	4/13/16	AY



Standard Terminal



SPECIFICATIONS:

Material:
 Insulator: PBT, glass reinforced, rated UL 94V-0
 Insulator color: Black

Contacts: Phosphor Bronze
 Plating:

Gold flash over Nickel on contact area,
 Tin over Copper underplate on IDC area

Electrical:
 Operating voltage: 250 VAC max.
 Current rating: 1 Amp max.
 Contact resistance: 20 mohms max.
 Insulation resistance: 5,000 Mohms min @ 500 VDC.
 Dielectric withstanding voltage: 500 VAC for 1 minute

Environmental:
 Lead free, RoHS compliant



Positions: 6 thru 20, 24, 26, 30, 34, 36, 40, 44, 50, 56, 60, 62, & 64
 A = .100 [2.54] x No. of Spaces per Row + .285 [7.24]
 B = .100 [2.54] x No. of Spaces per Row

UNLESS OTHERWISE SPECIFIED ALL DIMENSIONS ARE INCHES [MM] TOLERANCES: EXCEPT AS NOTED		ADAM TECH 909 Rahway Avenue, Union, NJ 07083 Phone: 908-687-5000 Fax: 908-687-5710	
INCHES HOLES .X ± .10 Ø.X ± .10 .XX ± .020 Ø.XX ± .015 .XXX ± .015 Ø.XXX ± .010			
APPROVALS		TITLE	
DRAWN	SS	.100 [2.54] FLAT CABLE IDC SOCKET STANDARD SINGLE WIPE CONTACTS	
CHECKED		DATE	
APPROVED		DATE	6/3/05
SIZE	PART NO.	REV.	
X	FCS-XX-SG	F	
REF:	S00087T	SCALE:	NTS
		SHEET 1 OF 1	

6

5

4

3

2

1

D

D

C

C

B

B

A

A

6

5

4

3

2

1