

REFERENCE SPECIFICATIONS

-NFC 93425 (in compliance with HE 507)

PHYSICAL CHARACTERISTICS

- INSULATOR MATERIAL: THERMOPLASTIC ,UL94V0
- CONTACT MATERIAL: BRASS
- ACCESSORIES: BRASS
- SHELLS: STEEL

ELECTRICAL CHARACTERISTICS

- NOMINAL CURRENT: 30A
- CONTACT RESISTANCE: <= 7.3 m ohms
- CONTACT/CONTACT : >=1000 V
- CONTACT/GROUND : >=1200 V
- INSULATION RESISTANCE: >=5000 MOhms

ENVIRONMENTAL CHARACTERISTICS

- CLIMATIC CATEGORY: 55/125/21
- TEMPERATURE RANGE -55°C TO +125°C
- DAMP HEAT STEADY STATE 21 DAYS
- SALT SPRAY 24 HOURS

MECHANICAL CHARACTERISTICS

- RETENTION AGAINST TORQUE: - Threaded insert: 0.7 N.m maximum
- Female screw : 0.5 N.m maximum

NOTE RoHS INFORMATION

- The "LF" products meet european union Directives and other country regulations as described in GS-47-0004
- The housing will withstand exposure to 260°C peak temperature for 3.5 seconds in a wave solder application with a 1.6mm minimum thick circuit board. See application notes/procedures if they are available.
- Termination plating spec:
 - Ni 1.27µmi+Sn 2.5 to 7.5µ(pure bright
 - Active area plating spec:
 - Ni + Gold/GxT
 - Shell plating :2 to 4µm Cu + Ni + 3 to 10µmm Sn(pure bright)
 - Accessories: Sn pure bright + nickel
- Packaging spec: See GS-14-920

DBL5W5P700G30LF

Series ←

Shell size: **E A B C** ←
see sheet 3

Front accessory definition ←
see sheet 2

- blank** :without accessory
- L** :threaded insert M3
- O** :threaded insert UNC 4-40
- V** :female screw UNC 4-40

Layout of contacts (see sheets) ←

Contacts ←

P :Pin

Termination type ←

7 Right angle/USA

Plating ←

- 00** 200 matings/unmatings
- 43** 500 matings/unmatings

PCB accessories definition ←
see sheet 2

- A** :without accessory
- H** :Metal brackets+harpoons for PCB 2.40mm
- G** :Metal brackets+harpoons for PCB 1.60mm
- M** :Metal brackets

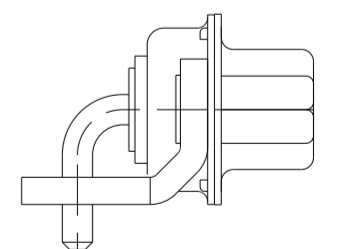
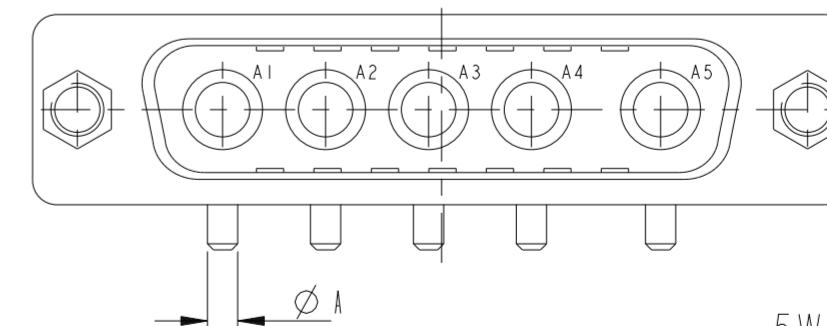
Power contacts ←

- 00** :Not Fitted with power contact (signal contact always fitted)
- 30** :Fitted with power contacts 30 Amp.

See note RoHS

TABLE 1:PCB HOLE DIAMETERS

	POWER CONTACTS		ACCESSORIES
30 A	∅2.00	∅2.40	∅3.10
Max current power	∅A ±0.1	PCB HOLE +/-0.1	PCB HOLE +/-0.1

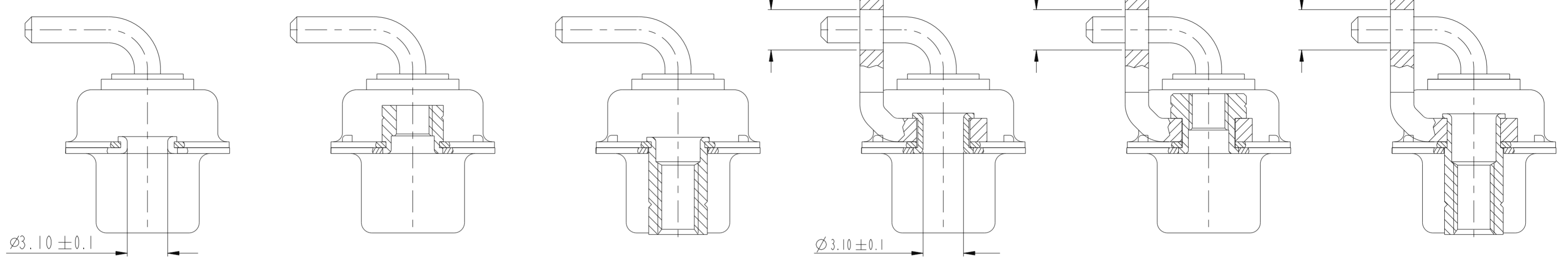


5W5 FOR EXAMPLE

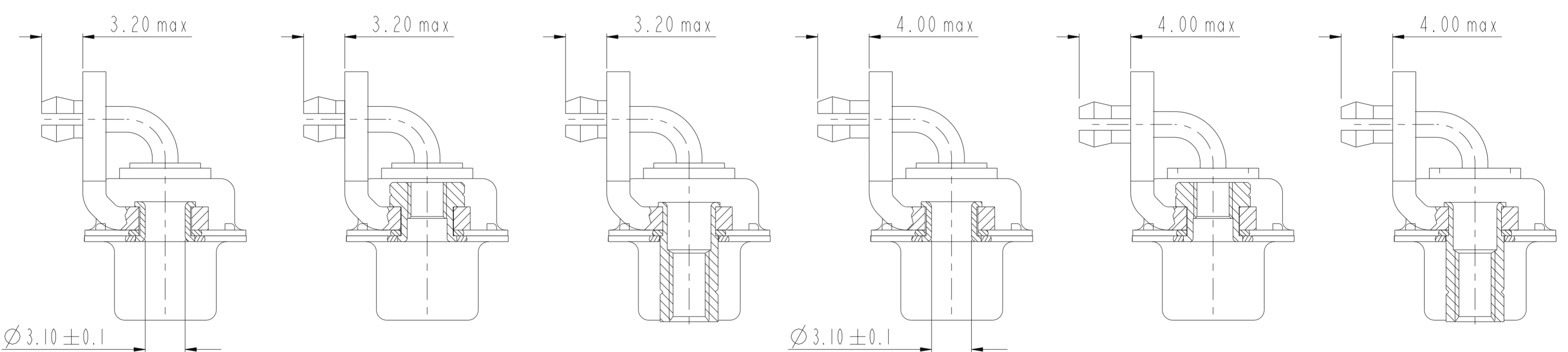
spec ref	dr	1, Product Eng	2015/06/12	projection	mm	size	A2	scale	3:1
tolerance std	eng	Gregar Mathew	2020/12/04		mm	ecn no	ELX-33502-1	rel level	Released
ISO 406 ISO 1101	chr	-	appr						
surface	linear	0.X	±0.3			SUB MALE DW US foot print		cat. no.	C01-8639-2313C
ISO 1302	angular	0°	±2°	full power right angled solder		rev	E	Product - Customer Drw sheet 1 of 5	

Amphenol FCI

© 2016 AFCI



FRONT ACCESSORY	Blank Without	L insert M3 O insert UNC 4.40	V insert UNC 4.40	Blank Without	L insert M3 O insert UNC 4.40	V insert UNC 4.40
PCB ACCESSORIES	A Without	A Without	A Without	M Metal brackets	M Metal brackets	M Metal bracket



FRONT ACCESSORY	Blank Without	L insert M3 O insert UNC 4.40	V insert UNC 4.40	Blank Without	L insert M3 O insert UNC 4.40	V insert UNC 4.40
PCB ACCESSORIES	G Metal brackets + harpoons for PCB 1.60mm	G Metal brackets + harpoons for PCB 1.60mm	G Metal brackets + harpoons for PCB 1.60mm	H Metal brackets + harpoons for PCB 2.40mm	H Metal brackets + harpoons for PCB 2.40mm	H Metal brackets + harpoons for PCB 2.40mm

spec ref	dr	1, Product Eng	2015/06/12	projection	mm	size	A2	scale	3:1
tolerance std	eng	Gregar Mathew	2020/12/04		mm	ecn no	ELX-33502-1	rel level	Released
ISO 406 ISO 1101	chr	-	product family						
surface	linear	0.X	±0.3		title SUB MALE DW US foot print full power right angled solder	cat. no. -	Product - Customer Drw	sheet 2 of 5	rev E
		0.XX	±0.10						
ISO 1302	angular	0°	±2°	title C01-8639-2313C	cat. no. -	Product - Customer Drw	sheet 2 of 5	rev E	

A

B

C

D

E

F

PART NUMBER	AMPS	MATINGS/ UNMATINGS	FRONT ACCESSORY	PCB ACCESSORIES
D*xWxP700A30LF	30	200	without	without
D*LxWxP700A30LF	30	200	insert M3	without
D*OxWxP700A30LF	30	200	insert UNC 4.40	without
D*VxWxP700A30LF	30	200	female screw UNC 4.40	without
D*xWxP700H30LF	30	200	without	metal bracket+harpoon PCB 2.40mm
D*LxWxP700H30LF	30	200	insert M3	metal bracket+harpoon PCB 2.40mm
D*OxWxP700H30LF	30	200	insert UNC 4.40	metal bracket+harpoon PCB 2.40mm
D*VxWxP700H30LF	30	200	female screw UNC 4.40	metal bracket+harpoon PCB 2.40mm
D*xWxP700G30LF	30	200	without	metal bracket+harpoon PCB 1.60mm
D*LxWxP700G30LF	30	200	insert M3	metal bracket+harpoon PCB 1.60mm
D*OxWxP700G30LF	30	200	insert UNC 4.40	metal bracket+harpoon PCB 1.60mm
D*VxWxP700G30LF	30	200	female screw UNC 4.40	metal bracket+harpoon PCB 1.60mm
D*xWxP700M30LF	30	200	without	metal bracket
D*LxWxP700M30LF	30	200	insert M3	metal bracket
D*OxWxP700M30LF	30	200	insert UNC 4.40	metal bracket
D*VxWxP700M30LF	30	200	female screw UNC 4.40	metal bracket

shell size *

E
A
A
B
C

LAYOUTS
xWx

2V2
3V3
3W3
5W5
8W8

PART NUMBER	AMPS	MATINGS/ UNMATINGS	FRONT ACCESSORY	PCB ACCESSORIES
D*xWxP743A30LF	30	500	without	without
D*LxWxP743A30LF	30	500	insert M3	without
D*OxWxP743A30LF	30	500	insert UNC 4.40	without
D*VxWxP743A30LF	30	500	female screw UNC 4.40	without
D*xWxP743H30LF	30	500	without	metal bracket+harpoon PCB 2.40mm
D*LxWxP743H30LF	30	500	insert M3	metal bracket+harpoon PCB 2.40mm
D*OxWxP743H30LF	30	500	insert UNC 4.40	metal bracket+harpoon PCB 2.40mm
D*VxWxP743H30LF	30	500	female screw UNC 4.40	metal bracket+harpoon PCB 2.40mm
D*xWxP743G30LF	30	500	without	metal bracket+harpoon PCB 1.60mm
D*LxWxP743G30LF	30	500	insert M3	metal bracket+harpoon PCB 1.60mm
D*OxWxP743G30LF	30	500	insert UNC 4.40	metal bracket+harpoon PCB 1.60mm
D*VxWxP543G30LF	30	500	female screw UNC 4.40	metal bracket+harpoon PCB 1.60mm
D*xWxP743M30LF	30	500	without	metal bracket
D*LxWxP743M30LF	30	500	insert M3	metal bracket
D*OxWxP743M30LF	30	500	insert UNC 4.40	metal bracket
D*VxWxP743M30LF	30	500	female screw UNC 4.40	metal bracket

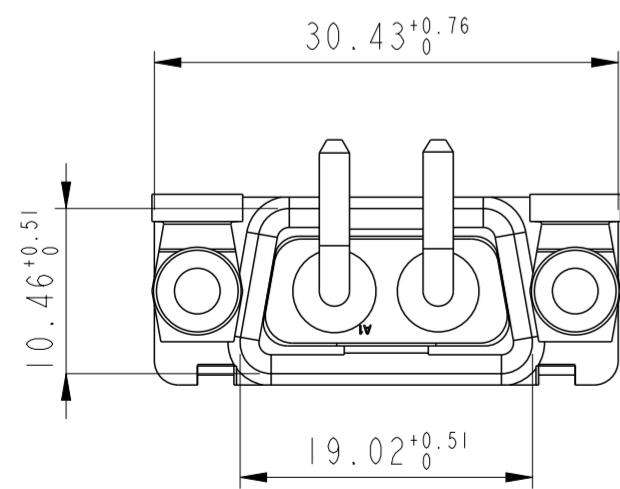
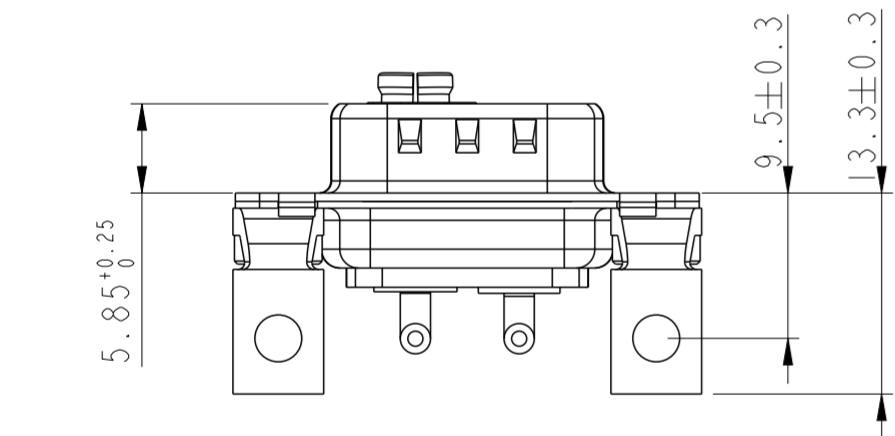
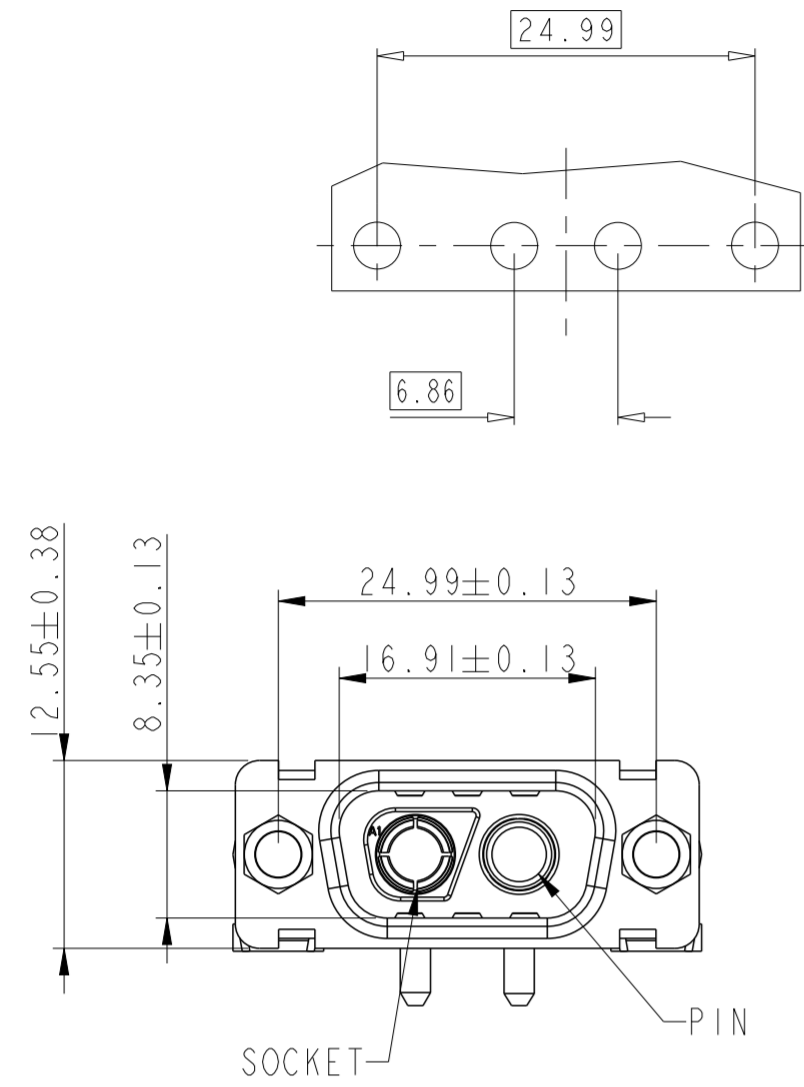
Amphenol
FCI

© 2016 APCI

spec ref	dr	1, Product Eng	2015/06/12	projection	mm	size	A2	scale	3:1
tolerance std	eng	Gregar Mathew	2020/12/04		← →	ecn no	ELX-33502-1	rel level	Released
ISO 406	chr	-							
ISO 1101	appr	Kuriakosa, San	2020/12/06						
surface	linear	0.X	±0.3	product family		D SUB -		cat. no.	C01-8639-2313C
ISO 1302		0.XX	±0.10	SUB MALE DW US foot print		rev		E	
		0.XXX	±0.05	full power right angled solder		sheet 3 of 5			
	angular	0°	±2°	Product - Customer Drw					

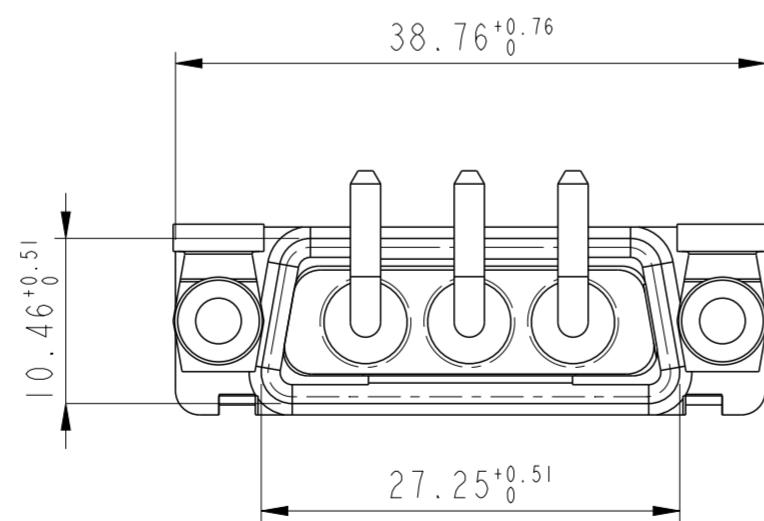
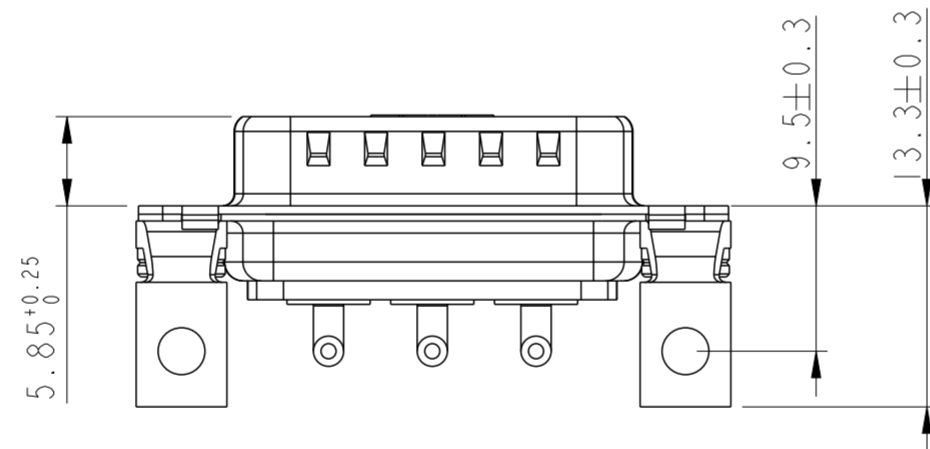
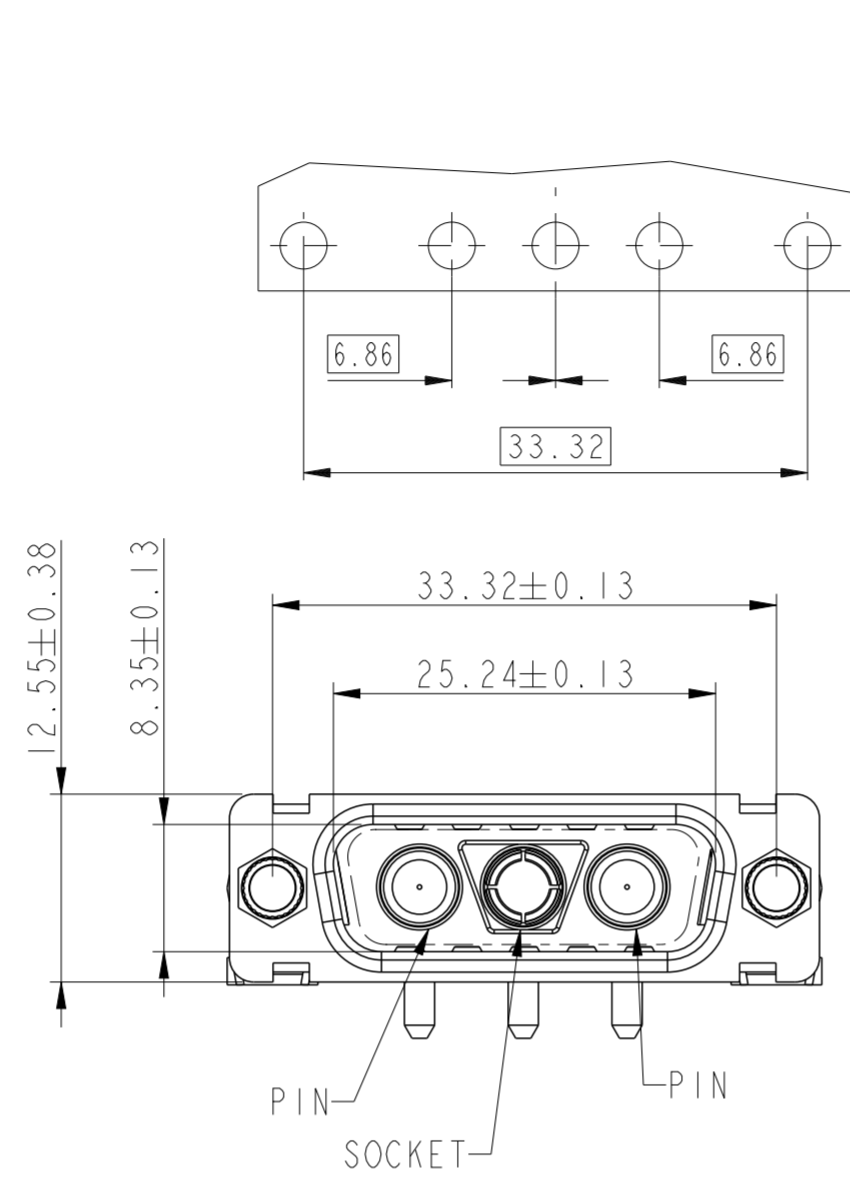
2V2

LAYOUT AND CONNECTOR DIMENSIONS
For PCB hole diameters see table I sheet 1



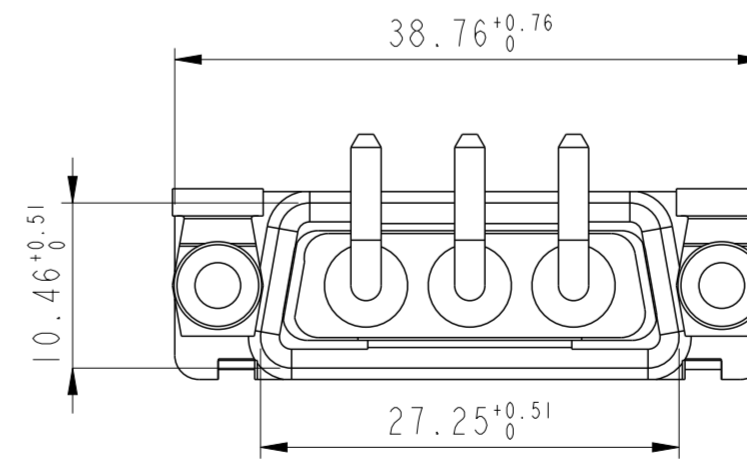
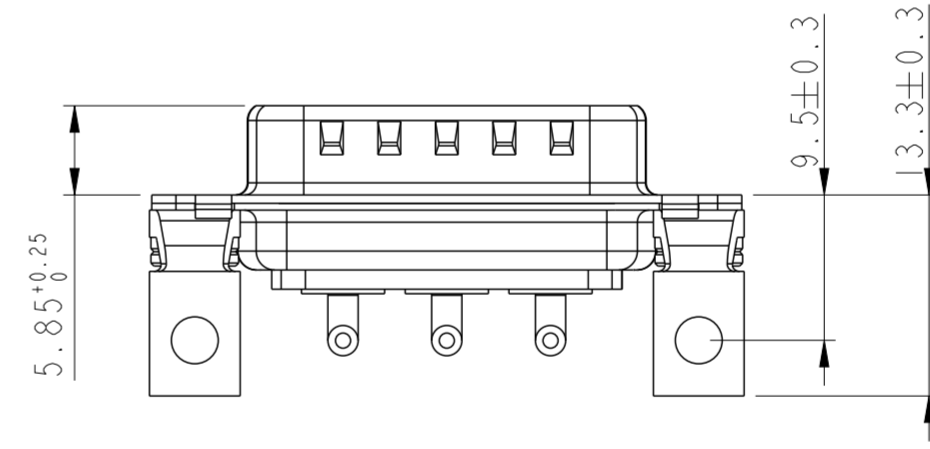
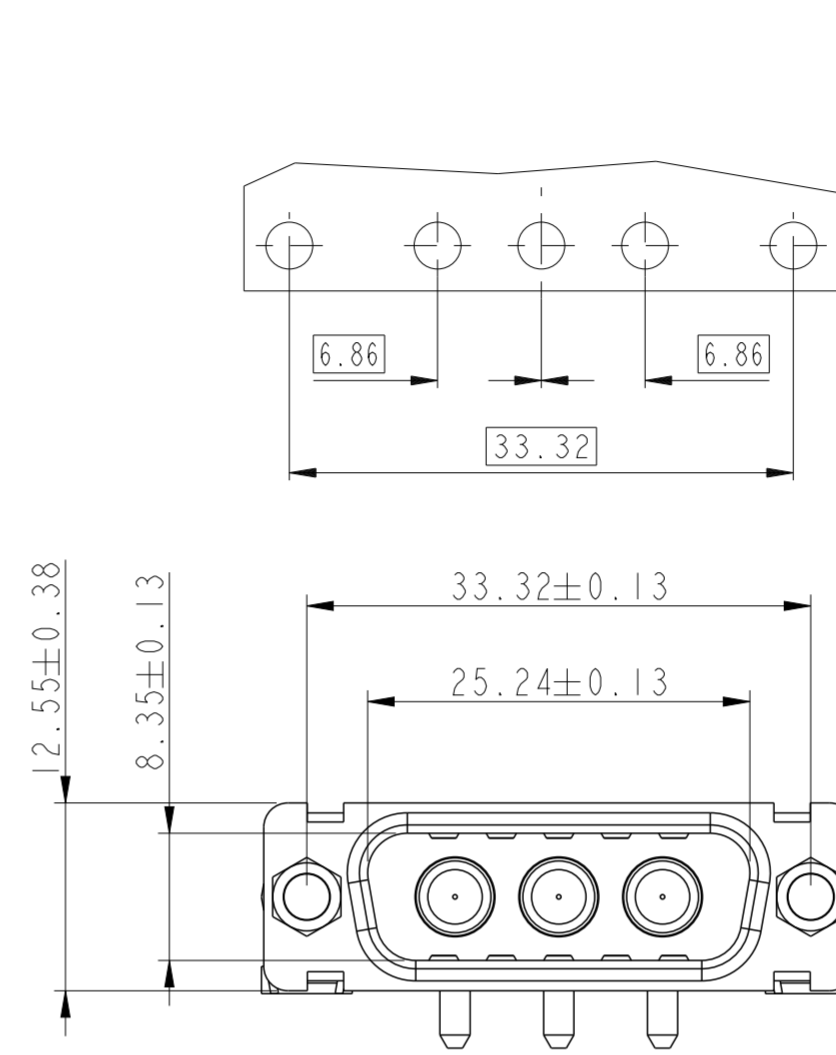
3V3

LAYOUT AND CONNECTOR DIMENSIONS
For PCB hole diameters see table I sheet 1

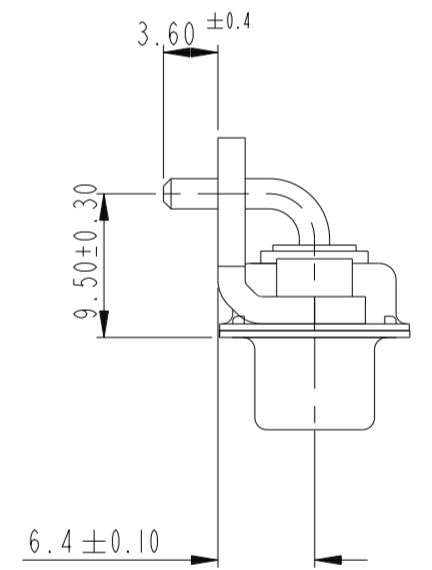


3W3

LAYOUT AND CONNECTOR DIMENSIONS
For PCB hole diameters see table I sheet 1



SIDE VIEW FOR ALL LAYOUTS

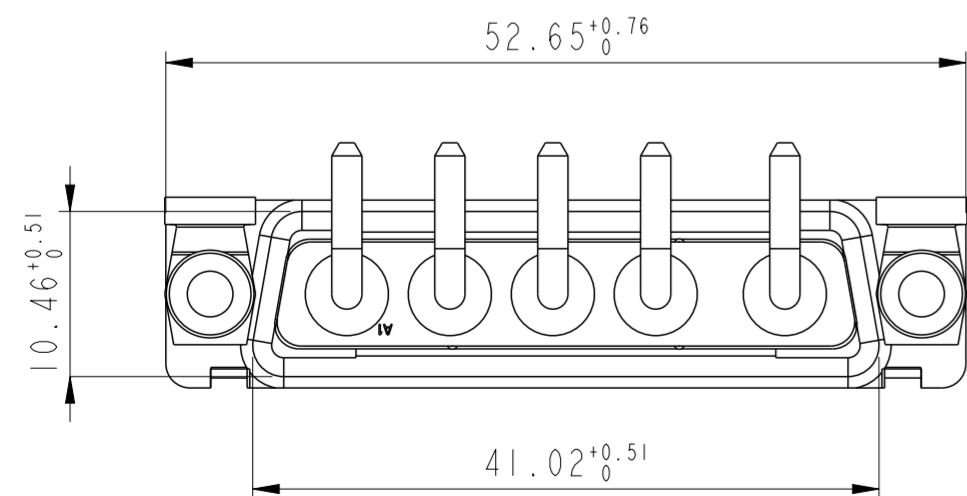
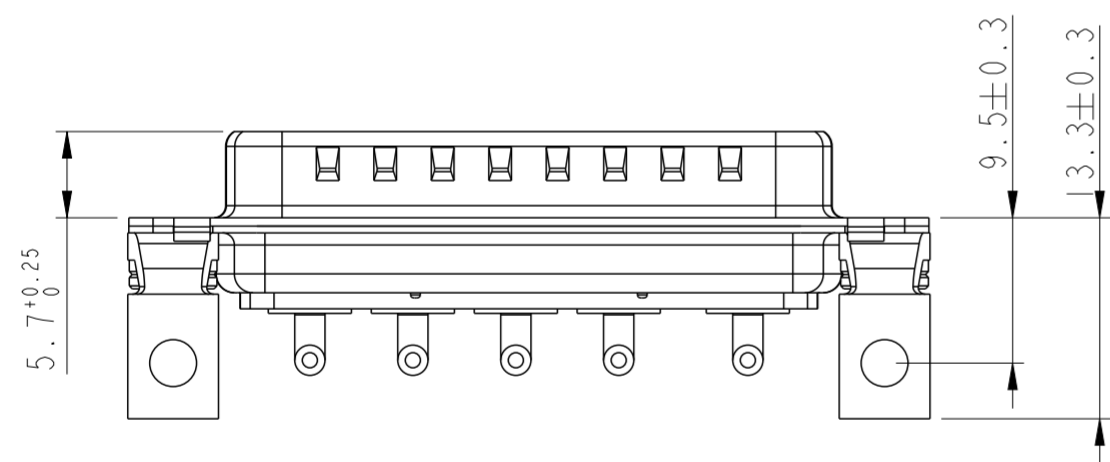
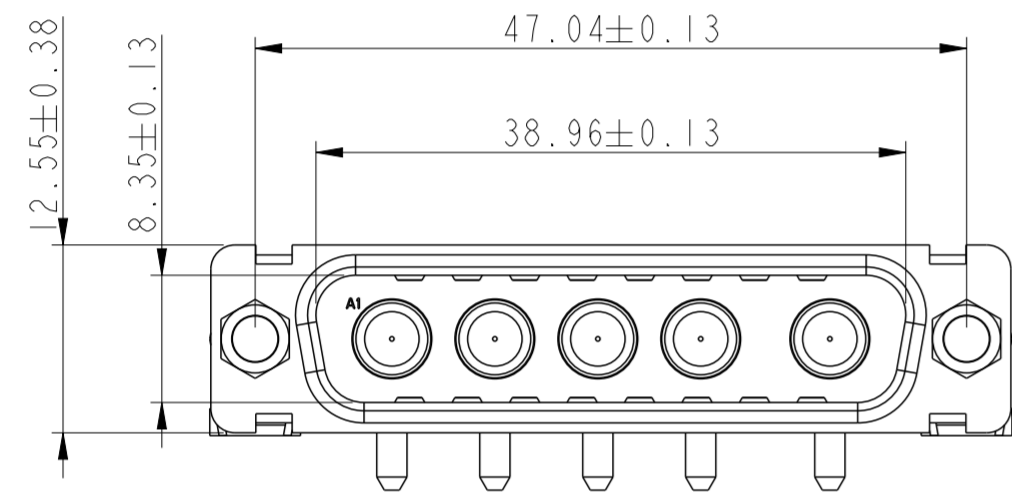
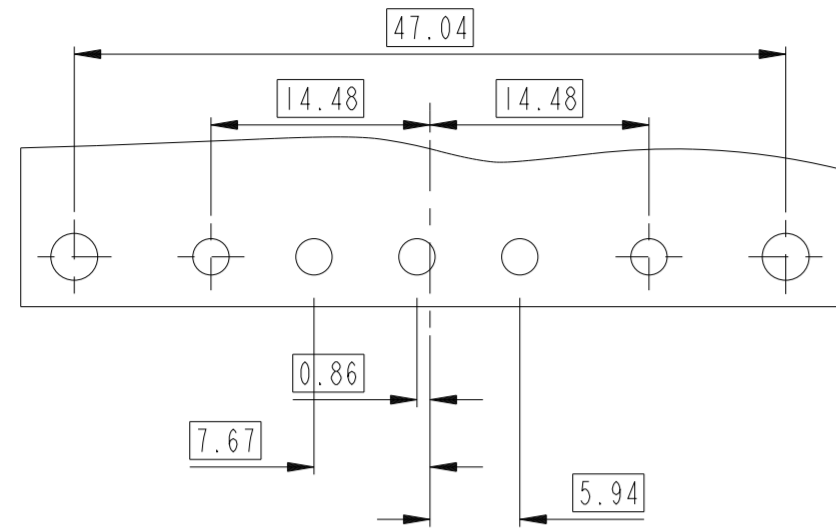


spec ref	dr	1, Product Eng	2015/06/12	projection	mm	size	A2	scale	2:1
tolerance std	eng	Gregar Mathew	2020/12/04		mm	ecn no	ELX-33502-1	rel level	Released
ISO 406	chr	-							
ISO 1101	appr	Kuriakosa, San	2020/12/06						
TOLERANCES UNLESS OTHERWISE SPECIFIED				product family	D SUB -		rel level	Released	
surface	linear	0.X	±0.3	SUB MALE DW US foot print		dwg no	C01-8639-2313C		rev
		0.XX	±0.10	full power right angled solder					E
		0.XXX	±0.05	cat. no.				Product - Customer Drw	sheet 4 of 5
ISO 1302	angular	0°	±2°						

5W5

LAYOUT AND CONNECTOR DIMENSIONS

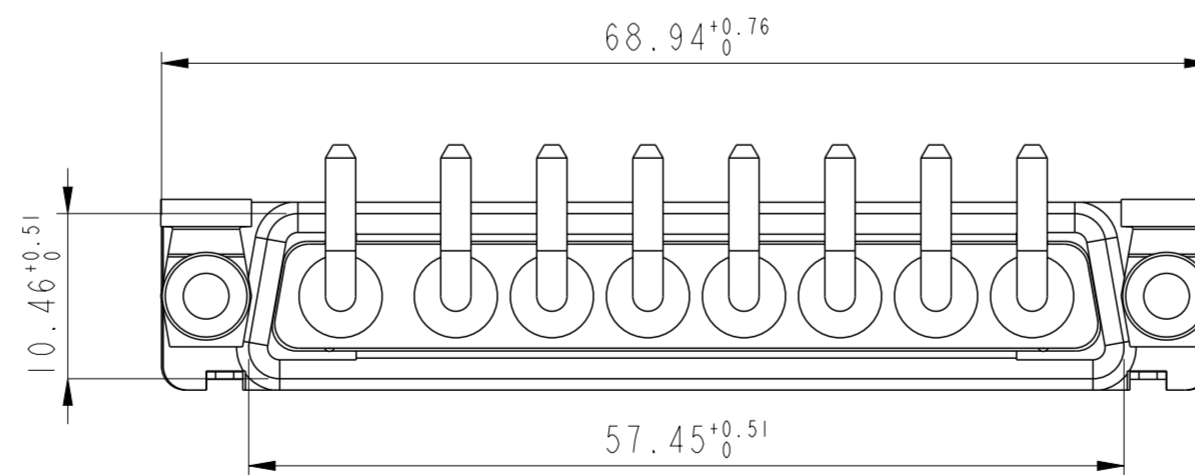
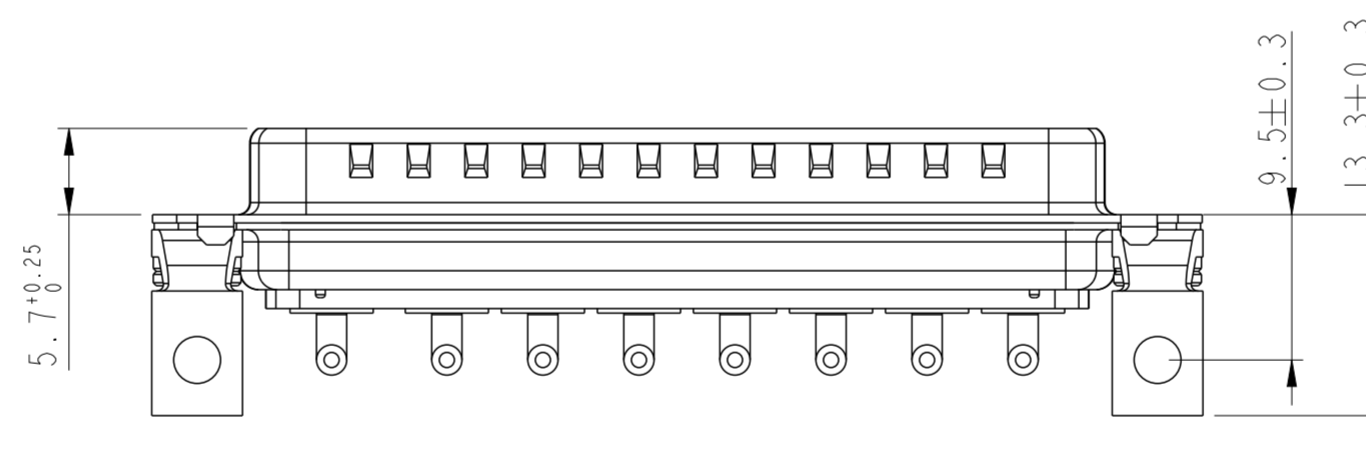
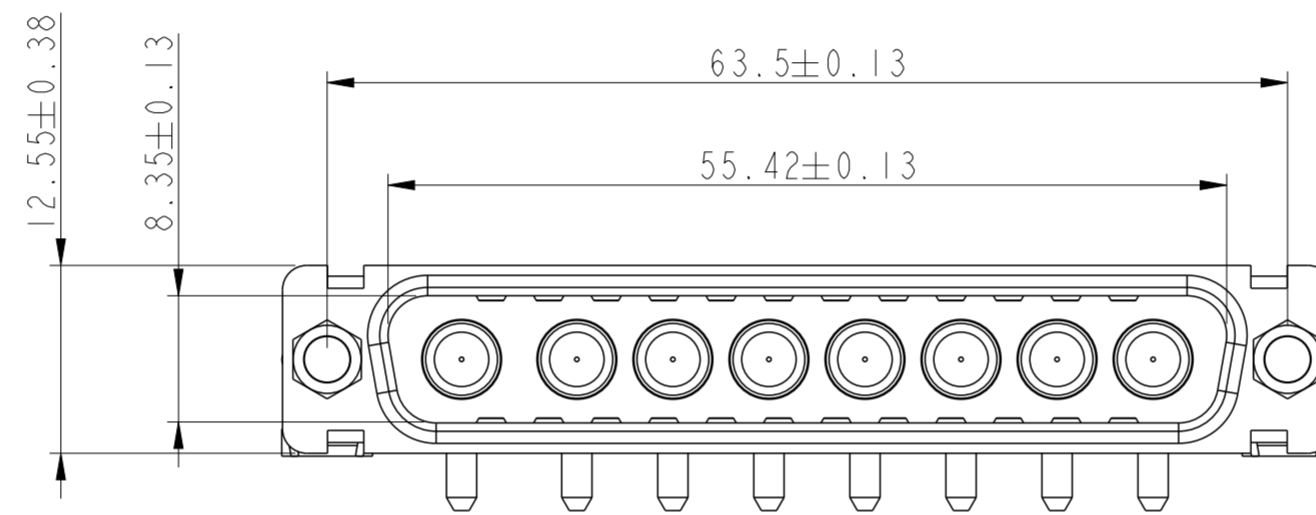
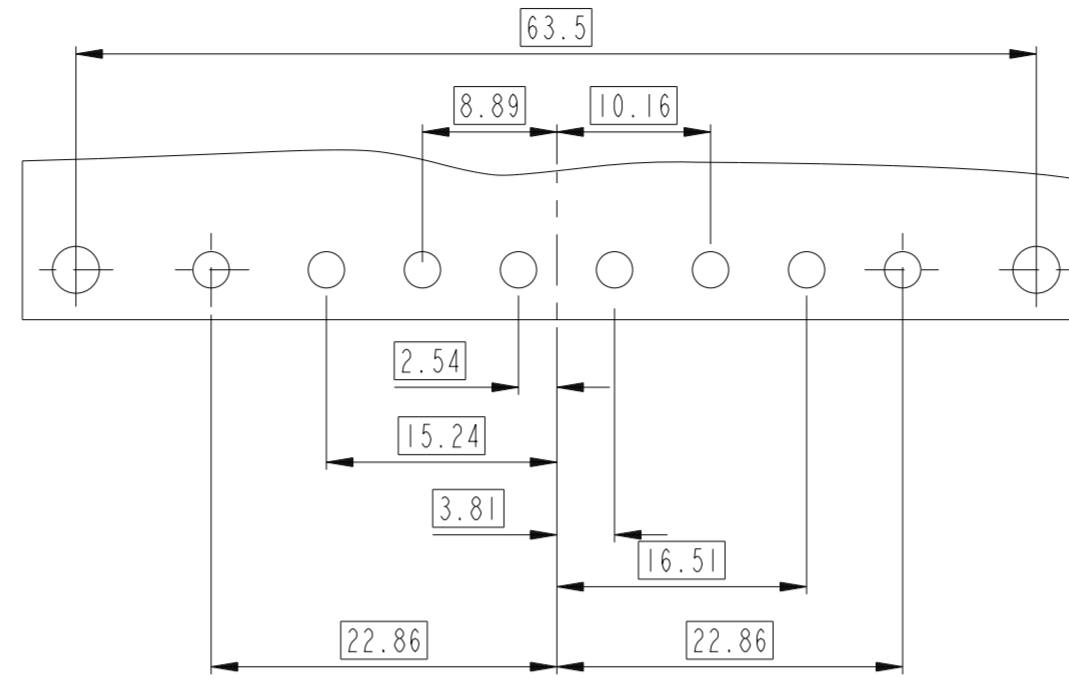
For PCB hole diameters see table I sheet I



8W8

LAYOUT AND CONNECTOR DIMENSIONS

For PCB hole diameters see table I sheet I



Amphenol
FCi

© 2016 AFci

spec ref	dr	1, Product Eng	2015/06/12	projection	mm	size	A2	scale	2:1
tolerance std	eng	Gregar Mathew	2020/12/04		mm	ecn no	ELX-33502-1	rel level	Released
ISO 406	chr	-	product family						
ISO 1101	appr	Kuriakosa, San	2020/12/06	TOLERANCES UNLESS OTHERWISE SPECIFIED		SUB MALE DW US foot print		cat. no.	Product - Customer Drw
surface	linear	0.X	±0.3		full power right angled solder	dwg no	C01-8639-2313C	rev	E
		0.XX	±0.10						
		0.XXX	±0.05						
ISO 1302	angular	0°	±2°	sheet 5 of 5					