

REVISIONS			
SYM	ZONE	ECN, ERN NO.	DATE APPRD.
A		PROPOSAL	SEP.22.08 A.G
B		UPDATED	MAR.11.09 A.G
C		ADD GENERAL TOLERANCES	JAN.06.11 A.G

MATERIAL NOTES:

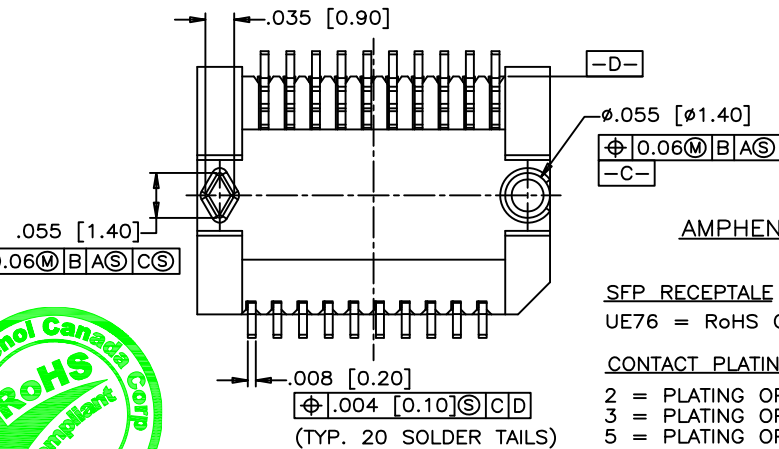
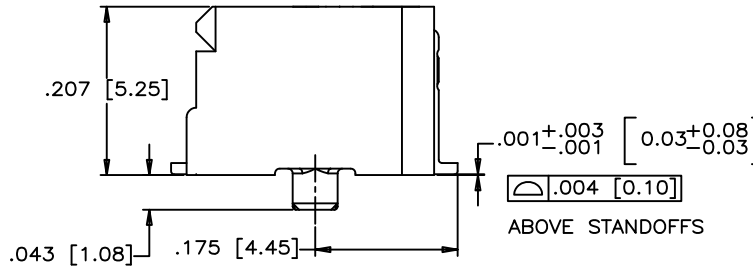
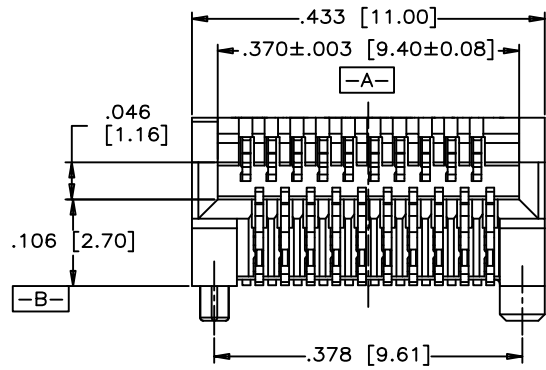
PLASTIC HOUSING:  
HIGH TEMPERATURE LCP  
FLAMMABILITY RATING UL94V-0.

CONTACTS:

- PHOSPHOR BRONZE  
PLATING OPTION 2:  
30µ" [0.76 µm] MIN. GOLD ON MATING AREA AND 2 µ" (0.05 µm) GOLD FLASH PLATING ON TERMINATION OVER 50µ" [1.27 µm] MIN. NICKEL UNDER LAYER.  
PLATING OPTION 3:  
30µ" [0.76 µm] MIN. GOLD ON MATING AREA AND 150-300 µ" (3.81-7.62 µm) MIN. LOW WHISKER MATTE TIN PLATING ON TERMINATION OVER 50µ" [1.27 µm] MIN. NICKEL UNDER LAYER.  
PLATING OPTION 5:  
15µ" [0.38 µm] MIN. GOLD ON MATING AREA AND 2 µ" (0.05 µm) GOLD FLASH PLATING ON TERMINATION OVER 50µ" [1.27 µm] MIN. NICKEL UNDER LAYER.  
PLATING OPTION 6:  
15µ" [0.38 µm] MIN. GOLD ON MATING AREA AND 150-300 µ" (3.81-7.62 µm) MIN. LOW WHISKER MATTE TIN PLATING ON TERMINATION OVER 50µ" [1.27 µm] MIN. NICKEL UNDER LAYER.  
LUBRICANT OPTION: LUBRICANT CAN BE ADDED ON THE CONTACTS MATING AREA (SEE P/N FOR THE OPTION)

PACKAGING:  
TAPE AND REEL.

TEMPERATURE RANGE:  
-40°C TO +85°C



AMPHENOL PART NUMBER CONFIGURATION

UX76 - A 20 - X 0 0 X T

SFP RECEPTALE

UE76 = RoHS COMPLIANT

CONTACT PLATING

LUBRICANT OPTION ON MATING AREA

0 = NO  
1 = YES

- 2 = PLATING OPTION 2 (SEE MATERIAL NOTES)
- 3 = PLATING OPTION 3 (SEE MATERIAL NOTES)
- 5 = PLATING OPTION 5 (SEE MATERIAL NOTES)
- 6 = PLATING OPTION 6 (SEE MATERIAL NOTES)

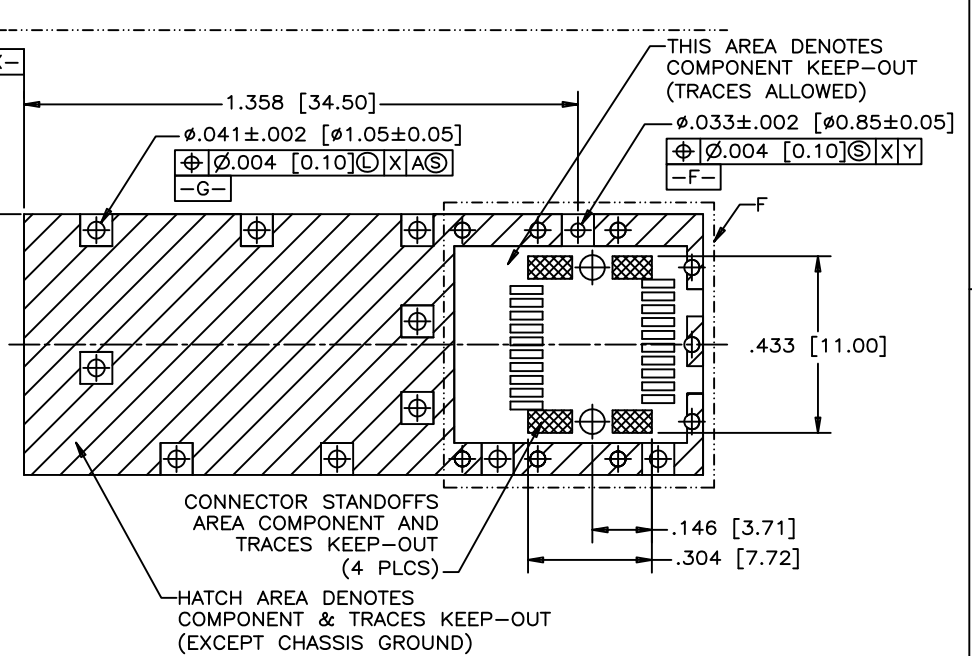
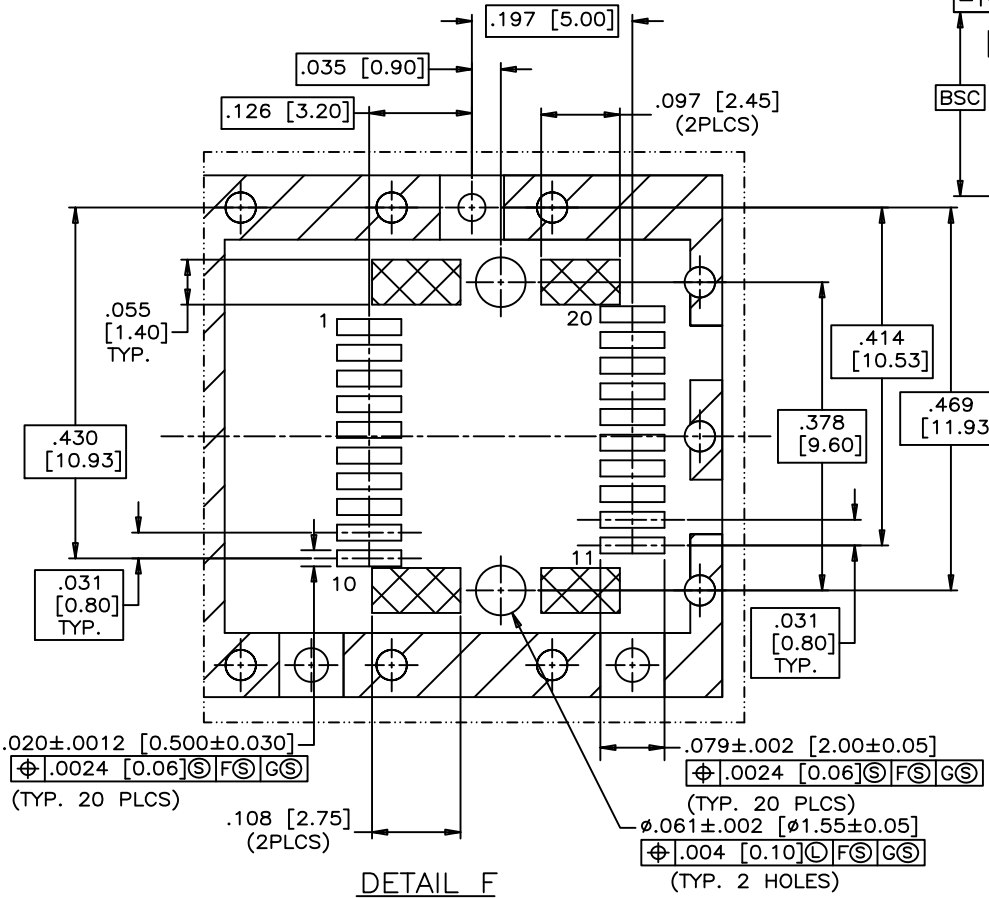
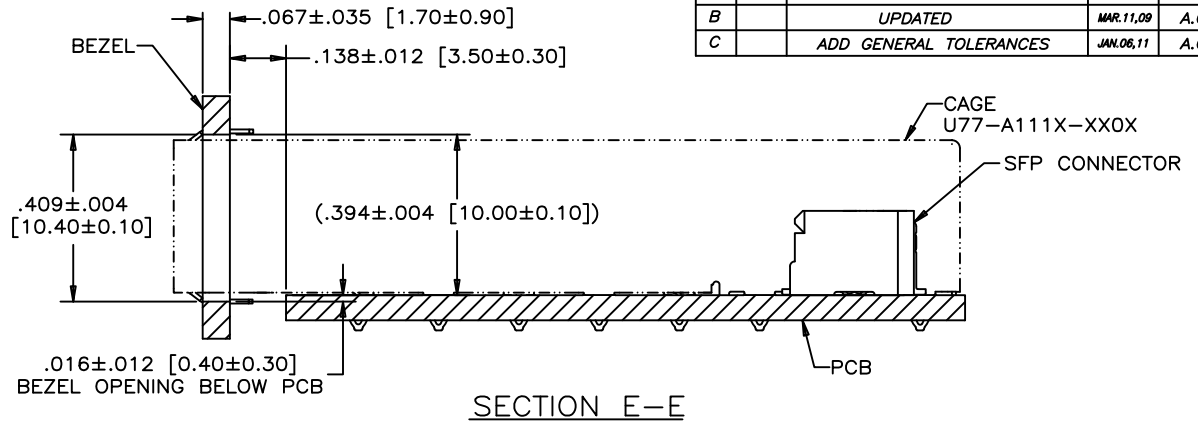
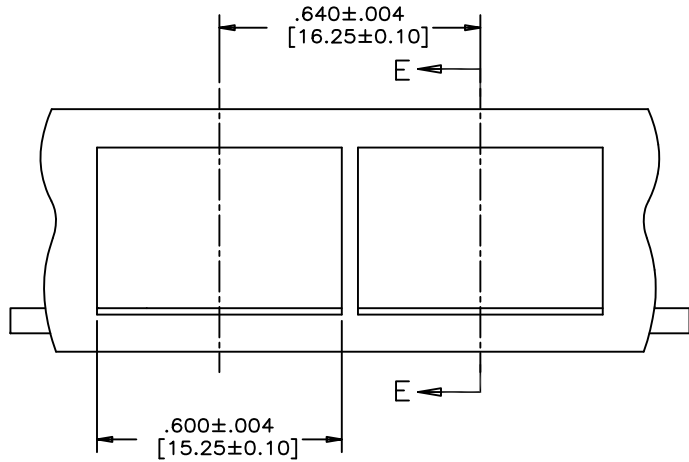


DRAWN		JaneZ		DATE		SEP.22.08	
DESIGNED							
CHECKED		J.SI		DATE		SEP.22.08	
I. E. APPRD.							
Q. A. APPRD.							
ENG. REL. NO.		A.G		SEP.22.08			
REF.							
DIMENSIONS ARE IN		INCHES [mm]		CODE ID. NO		03554	
DECIMALS		X.XX±0.014 X.X±0.35					
ANGLES		X°±1° X.X°±0.5°					
SCALE		4/1		WT.		-----	
SURF.		-----		SHEET		1 OF 3	

Amphenol Canada Corp.			
TITLE			
SFP+ 20 POSITION HIGH SPEED CONNECTOR RECEPTACLE FIXED BOARD, RIGHT ANGLE SMT OPTIONAL PLATING AND LUBRICANT ON MATING			
DWG	DRAWING NO.	REV.	
A	P-UX76-A20-X00XX	c	

THIS DOCUMENT CONTAINS PROPRIETARY INFORMATION AND SUCH INFORMATION MAY NOT BE DISCLOSED TO OTHERS FOR ANY PURPOSE OR USED FOR MANUFACTURING PURPOSES WITHOUT WRITTEN PERMISSION FROM AMPHENOL CANADA CORP.

REVISIONS				
SYM	ZONE	ECN, ERN NO.	DATE	APPRD.
A		PROPOSAL	SEP.22.08	A.G
B		UPDATED	MAR.11.09	A.G
C		ADD GENERAL TOLERANCES	JAN.06.11	A.G



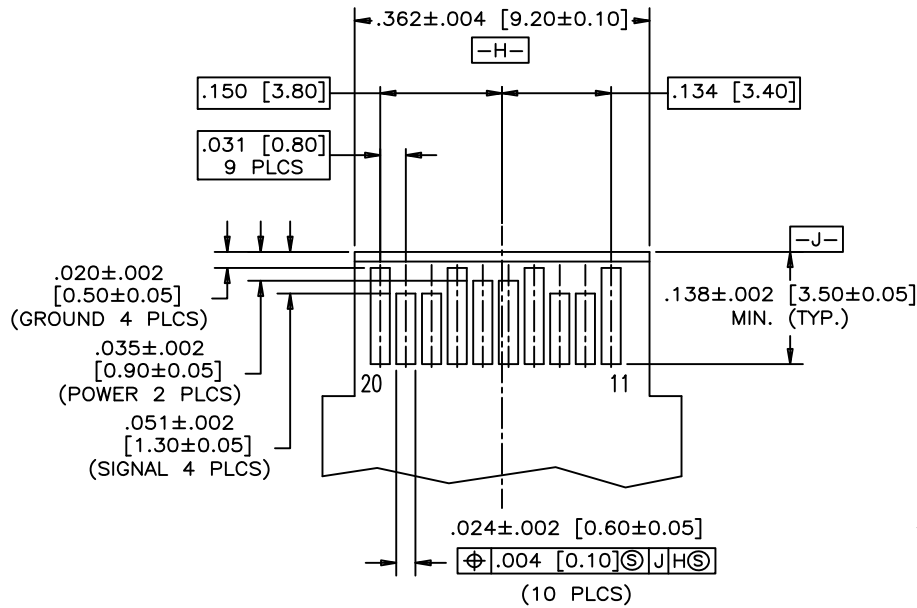
DRAWN	JaneZ	DATE	SEP.22.08
DESIGNED			
CHECKED	J.SI	DATE	SEP.22.08

Amphenol Canada Corp.	
TITLE SFP+ 20 POSITION HIGH SPEED CONNECTOR RECEPTACLE FIXED BOARD, RIGHT ANGLE SMT OPTIONAL PLATING AND LUBRICANT ON MATING	
DWG	DRAWING NO. P-UX76-A20-X00XX
REV.	C
SCALE	2/1
WT.	-----
SURF.	-----
SHEET	2 OF 3

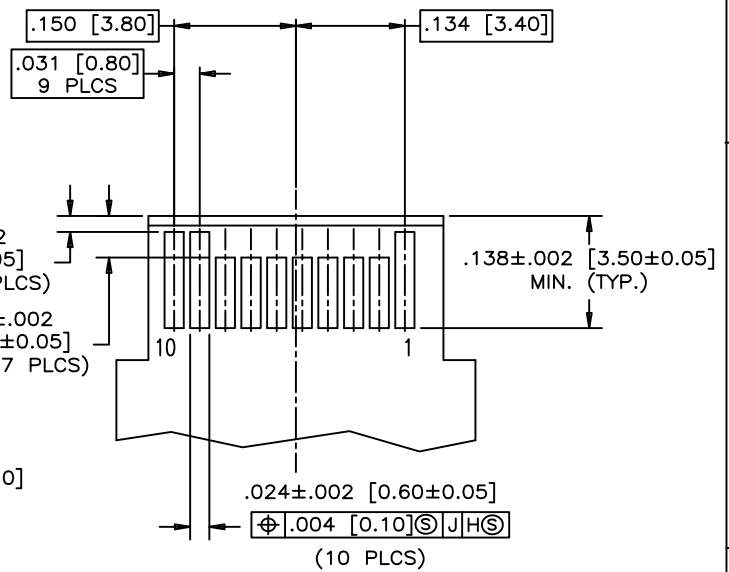
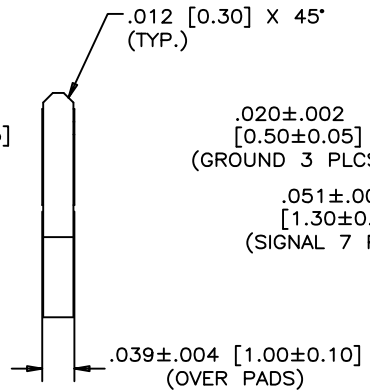
GENERAL TOLERANCES			
DECIMALS	INCH	MILLIMETERS	ENG. REL. NO.
	X.XX±0.004	X.X±0.10	A.G SEP.22.08
	X.XXX±0.002	X.XX±0.05	
ANGLES	X°±1°		
	X.X°±0.5°		

THIS DOCUMENT CONTAINS PROPRIETARY INFORMATION AND SUCH INFORMATION MAY NOT BE DISCLOSED TO OTHERS FOR ANY PURPOSE OR USED FOR MANUFACTURING PURPOSES WITHOUT WRITTEN PERMISSION FROM AMPHENOL CANADA CORP.

REVISIONS			
SYM	ZONE	ECN, ERN NO.	DATE APPRD.
A		PROPOSAL	SEP.22.08 A.G
B		UPDATED	MAR.11.09 A.G
C		ADD GENERAL TOLERANCES	JAN.06.11 A.G



TOP VIEW OF BOARD



BOTTOM VIEW OF BOARD

RECOMMENDED LAYOUT DETAIL  
MATING TRANSCEIVER PCB

THIS DOCUMENT CONTAINS PROPRIETARY INFORMATION AND SUCH INFORMATION MAY NOT BE DISCLOSED TO OTHERS FOR ANY PURPOSE OR USED FOR MANUFACTURING PURPOSES WITHOUT WRITTEN PERMISSION FROM AMPHENOL CANADA CORP.

DRAWN <i>JaneZ</i> DATE SEP.22.08		Amphenol Canada Corp.	
DESIGNED			
CHECKED <i>J.SI</i> DATE SEP.22.08			
TITLE		SFP+ 20 POSITION HIGH SPEED CONNECTOR RECEPTACLE FIXED BOARD, RIGHT ANGLE SMT OPTIONAL PLATING AND LUBRICANT ON MATING	
DWG. APPRD. A.G DATE SEP.22.08		DWG. A	DRAWING NO. P-UX76-A20-X00XX
DECIMALS X.XX±0.004 X.X±0.10		REF. X	REV. C
ANGLES X'±1" X.X'±0.5"		DIMENSIONS ARE IN INCHES [mm]	CODE ID. NO. 03554
SCALE 4:1		WT. -----	SURF. -----
		SHEET 3 OF 3	