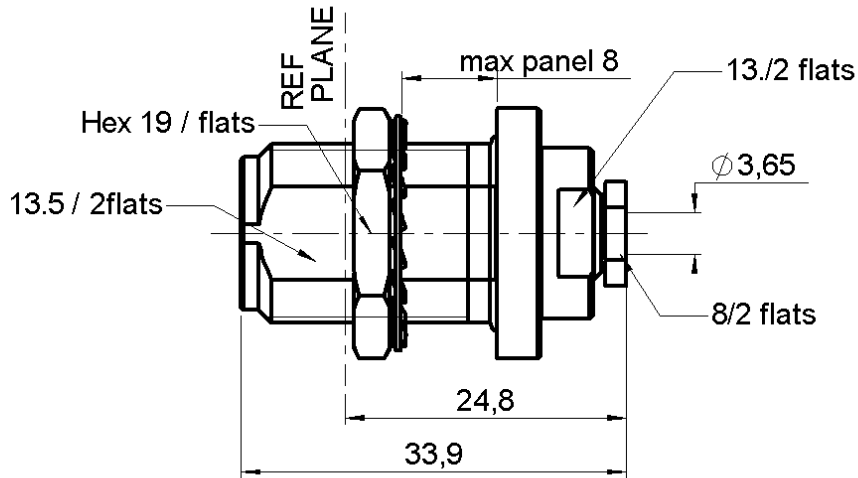


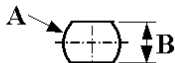
**STRAIGHT BULKHEAD JACK PANEL SEAL**  
**REAR MOUNT SOLDER TYPE - CABLE .141**

**R163.337.001**

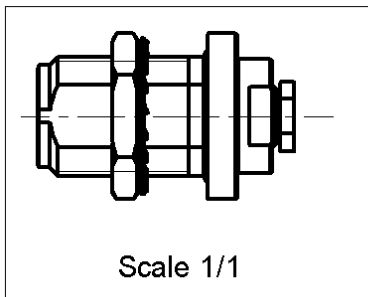
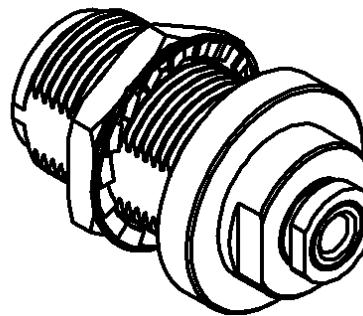
Series : N-18



**PANEL CUT OUT**



		mm	
		Maxi	mini
A		16	15.9
B		13.7	13.6



All dimensions are in mm.



COMPONENTS	MATERIALS	PLATINGS (µm)
BODY	STAINLESS STEEL	PASSIVATED .
CENTER CONTACT	BERYLLIUM COPPER	GOLD 1.3 OVER NICKEL 2
OUTER CONTACT	-	-
INSULATOR	PTFE,ULTEM	-
GASKET	-	-
OTHERS PARTS	-	-
-	-	-
-	-	-

Issue : 0048 B

In the effort to improve our products, we reserve the right to make changes judged to be necessary.



**STRAIGHT BULKHEAD JACK PANEL SEAL**

**R163.337.001**

**REAR MOUNT SOLDER TYPE - CABLE .141**

Series : N-18

**PACKAGING**

Standard	Unit	Other
<b>1</b>	<b>'W' option</b>	<b>Contact us</b>

**SPECIFICATION**

**ELECTRICAL CHARACTERISTICS**

Impedance		<b>50</b>	$\Omega$
Frequency		<b>0-18</b>	GHz
VSWR	<b>1.05</b> +	<b>0.007</b>	x F(GHz) Maxi
Insertion loss		<b>0.1</b>	$\sqrt{F}$ (GHz) dB Maxi
RF leakage	- (	<b>92</b>	- F(GHz)) dB Maxi
Voltage rating		<b>500</b>	Veff Maxi
Dielectric withstanding voltage		<b>1500</b>	Veff mini
Insulation resistance		<b>5000</b>	M $\Omega$ mini

**CABLE ASSEMBLY**

Stripping	a	b	c	d	e	f
mm	3.17	0.00	0.00	0.00	0.00	0.00

Assembly instruction :

Recommended cable(s)  
RG 402  
KS 2

Cable retention

- pull off	<b>272</b>	N mini
- torque	<b>40</b>	N.cm

**MECHANICAL CHARACTERISTICS**

Center contact retention		
Axial force – Mating end	<b>27</b>	N mini
Axial force – Opposite end	<b>27</b>	N mini
Torque	<b>NA</b>	N.cm mini

**TOOLING**

Part Number	Description	Hexagon
.	.	.

Recommended torque		
Mating	<b>NA</b>	N.cm
Panel nut	<b>500</b>	N.cm
Clamp nut	<b>200</b>	N.cm
A/F clamp nut	<b>8.000</b>	mm

Mating life	<b>500</b>	Cycles mini
Weight	<b>42.900</b>	g

**OTHERS CHARACTERISTICS**

-

**ENVIRONMENTAL**

Operating temperature	<b>-40/+125</b>	$^{\circ}$ C
Hermetic seal	<b>NA</b>	Atm.cm3/s
Panel leakage	<b>.0044</b>	

Issue : 0048 B

In the effort to improve our products, we reserve the right to make changes judged to be necessary.

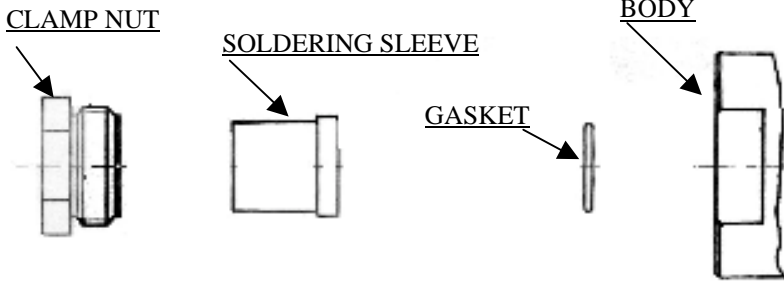


**STRAIGHT BULKHEAD JACK PANEL SEAL**  
**REAR MOUNT SOLDER TYPE - CABLE .141**

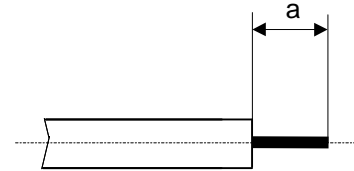
**R163.337.001**

Series : N-18

**COMPONENTS**

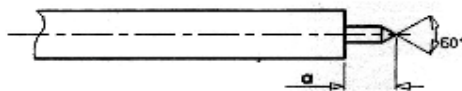


**STRIPPING DIMENSIONS**



**1**

Strip the centre conductor and stim it



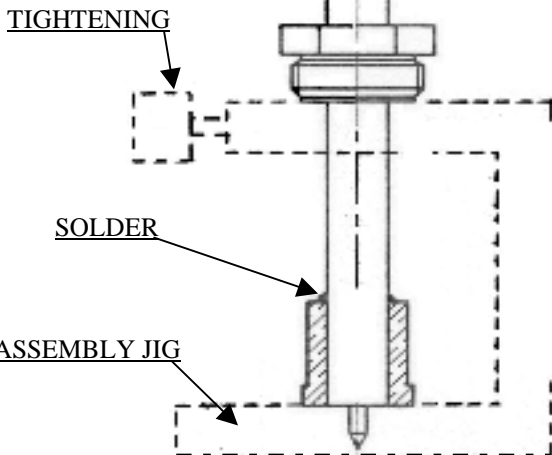
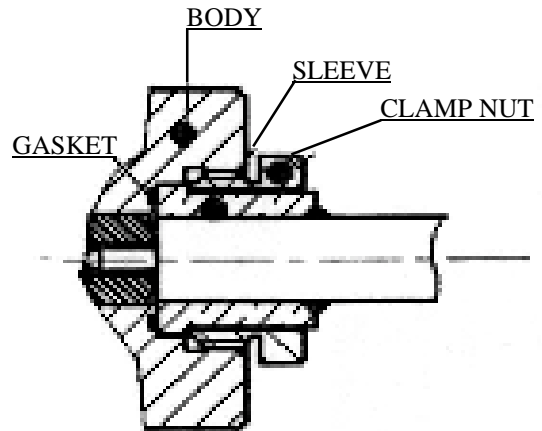
**2**

- Slide soldering sleeve on the cable .
- Slide soldering sleeve on the cable and get the cable against assembly jig, tighten the cable.
- Solder sleeve onto the cable.
- Let the assembly cool down before removing it from the jig.
- Cut the dielectric flush to the sleeve.

**3**

- Put the gasket into the body
- Screw the sub-assembly into the body.

Recommended coupling torque : (see connector TDS)



Issue : 0048 B

In the effort to improve our products, we reserve the right to make changes judged to be necessary.

