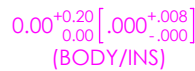
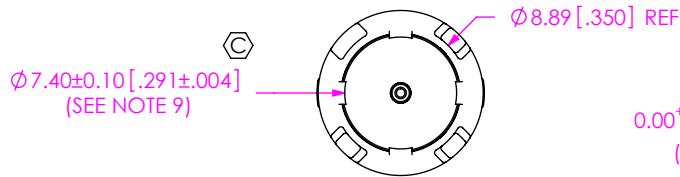
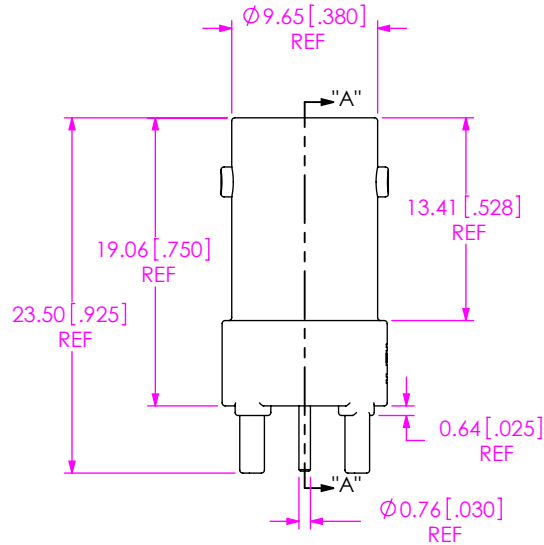
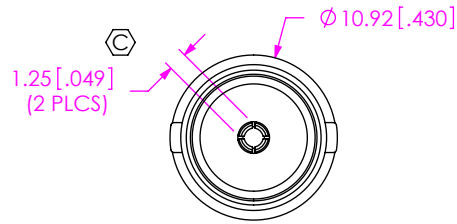


**DESIGNED & DIMENSIONED  
IN MILLIMETERS [INCHES]**



SECTION "A"- "A"

DETAIL "B"  
SCALE 4 : 1

**BNC7T-J-P-XX-ST-TH2D**

**GENDER**  
-J: JACK

**TYPE**  
-P: PCB

**TERMINATION**  
-TH2D: DIE CAST THROUGH HOLE

**ORIENTATION**  
-ST: STRAIGHT

**PLATING SPECIFICATION**

-HN: HEAVY GOLD/NICKEL (SEE NOTES 6 & 7)  
(BNC7T-J-P-DN-ST-TH2-BDY-D)  
(BNC7T-J-P-ST-TH2-INS)  
(BNC7T-J-P-HN-ST-TH2-2PC-SKT)

-GN: HEAVY GOLD/NICKEL (SEE NOTES 6 & 7)  
(BNC7T-J-P-DN-ST-TH2-BDY-D)  
(BNC7T-J-P-ST-TH2-INS)  
(BNC7T-J-P-GN-ST-TH2-2PC-SKT)

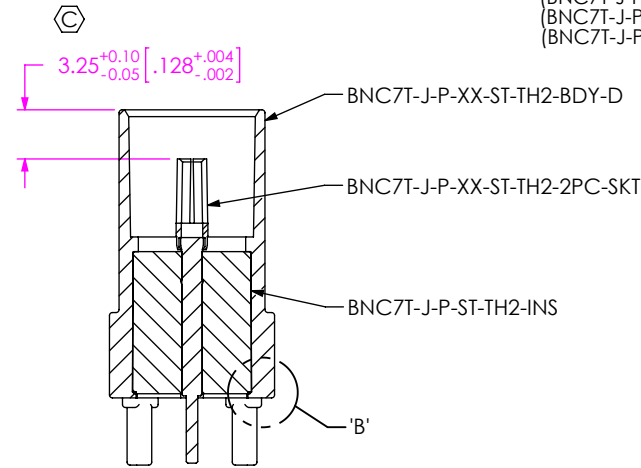
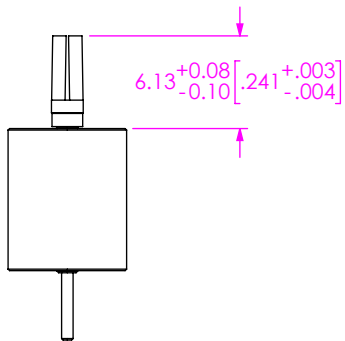


FIG 1  
BNC7T-J-P-XX-ST-TH2D SHOWN

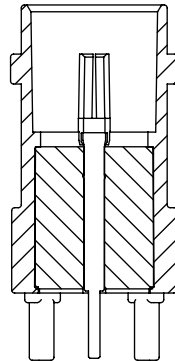
**NOTES:**

1. (C) REPRESENTS A CRITICAL DIMENSION.
2. PUSHOUT FORCE FOR CENTER CONTACT: 26.69 N [6.0 LB] MIN.
3. PUSHOUT FORCE FOR INSULATOR: 53.38 N [12.0 LB] MIN.
4. SEE CO-HD-WI-3040-M RF PACKAGING STANDARD FOR PACKAGING INSTRUCTIONS.  
PRODUCT TO BE PACKAGED IN TRAY TY-BNC001-1 WITH COVER TY-SMA001-2.
5. ROHS COMPLIANT.
6. PLATING: -H: .000030" MIN GOLD OVER .000050" MIN. NICKEL.  
-G: .000010" MIN GOLD OVER .000050" MIN. NICKEL.  
-N: .000100" MIN NICKEL.
7. ASSEMBLY PLATING DESIGNATIONS:  
-HN: (CENTER CONTACT)-H  
(OUTER CONTACT)-N  
-GN: (CENTER CONTACT)-G  
(OUTER CONTACT)-N
8. NOTE DELETED.
9. 0.10 [.004] BURR ALLOWED IN SPECIFIED AREA ONLY.
10. FOR APPLICATIONS REQUIRING INVERTED REFLOW SOLDERING, USE OF AN EPOXY ADHESIVE IS RECOMMENDED.

<p><b>UNLESS OTHERWISE SPECIFIED DIMENSIONS ARE IN MILLIMETERS [INCHES]</b></p> <p>TOLERANCES ARE:</p> <p>DECIMALS                      ANGLES</p> <p>.X: ±0.3 [.01]                      2°</p> <p>.XX: ±0.13 [.005]</p> <p>.XXX: ±0.051 [.0020]</p>	<p><b>PROPRIETARY NOTE</b></p> <p>THIS DOCUMENT CONTAINS CONFIDENTIAL AND PROPRIETARY INFORMATION AND ALL DESIGN, MANUFACTURING, REPRODUCTION, USE, PATENT RIGHTS AND SALES RIGHTS ARE EXPRESSLY RESERVED BY SAMTEC, INC. THIS DOCUMENT SHALL NOT BE DISCLOSED, IN WHOLE OR PART, TO ANY UNAUTHORIZED PERSON OR ENTITY NOR REPRODUCED, TRANSFERRED OR INCORPORATED IN ANY OTHER PROJECT IN ANY MANNER WITHOUT THE EXPRESS WRITTEN CONSENT OF SAMTEC, INC.</p>	<p><b>samtec</b></p> <p>520 PARK EAST BLVD, NEW ALBANY, IN 47150 PHONE: 812-944-6733    FAX: 812-948-5047 e-Mail: info@SAMTEC.com    code 55322</p> <p>DESCRIPTION: TRUE 75OHM BNC ELEVATED STRAIGHT JACK</p> <p>DWG. NO. <b>BNC7T-J-P-XX-ST-TH2D</b></p> <p>BY: D. PARMAR    10/21/2009    SHEET 1 OF 2</p>
<p><b>MATERIAL:</b> SHELL: ZINC CONTACT: COPPER ALLOY DIELECTRIC: PTFE</p>	<p>DO NOT SCALE DRAWING                      SHEET SCALE: 2:1</p>	

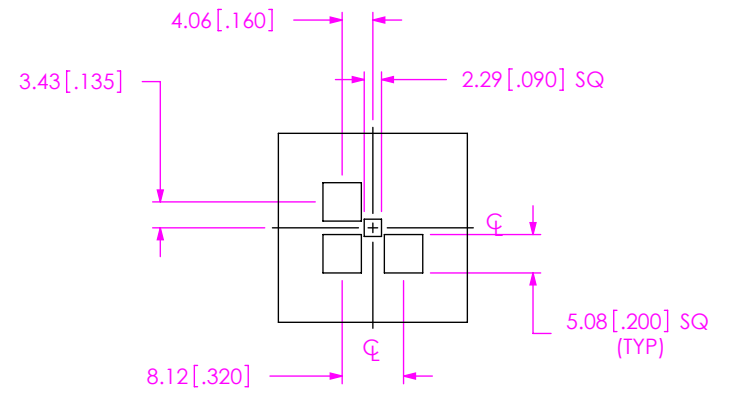


**IN-PROCESS 1**  
INSERT CONTACT INTO INSULATOR

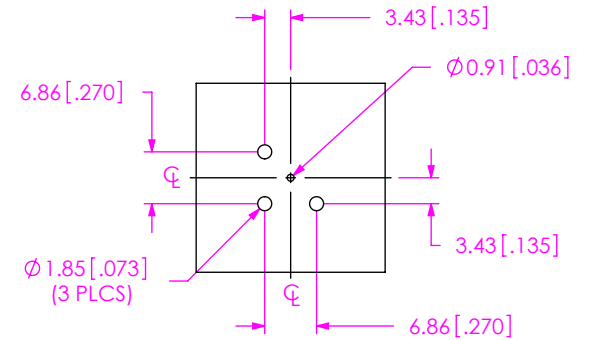


**IN-PROCESS 2**  
INSERT INSULATOR INTO BODY  
& SWAGE RETENTION TABS

NOTE:  
STENCIL TO BE 0.15 [.006] THICK.



**RECOMMENDED STENCIL LAYOUT**



**RECOMMENDED PCB LAYOUT**

**PROPRIETARY NOTE**  
THIS DOCUMENT CONTAINS CONFIDENTIAL AND PROPRIETARY INFORMATION AND ALL DESIGN, MANUFACTURING, REPRODUCTION, USE, PATENT RIGHTS AND SALES RIGHTS ARE EXPRESSLY RESERVED BY SAMTEC, INC. THIS DOCUMENT SHALL NOT BE DISCLOSED, IN WHOLE OR PART, TO ANY UNAUTHORIZED PERSON OR ENTITY NOR REPRODUCED, TRANSFERRED OR INCORPORATED IN ANY OTHER PROJECT IN ANY MANNER WITHOUT THE EXPRESS WRITTEN CONSENT OF SAMTEC, INC.



520 PARK EAST BLVD, NEW ALBANY, IN 47150  
PHONE: 812-944-6733 FAX: 812-948-5047  
e-Mail info@SAMTEC.com code 55322

SHEET SCALE: 2:1

DESCRIPTION:  
TRUE 75OHM BNC ELEVATED STRAIGHT JACK

DWG. NO.  
**BNC7T-J-P-XX-ST-TH2D**

BY: D. PARMAR 10/21/2009 SHEET 2 OF 2