

PART NUMBER	REV	FIRST USED	TERMINATOR	FEED TYPE	DESCRIPTION
1339781-1	A		BENCH & LEADMAKER	MECH POST FEED	HD-I APPLICATOR
7-1339781-1	A		BENCH & LEADMAKER	MECH POST FEED	-1 AND SPARE PARTS
7-1339781-7	A				SPARE PARTS KIT

**CRIMP DATA** ESCUBEDO TERMINAL AMP CRIMP SPECS

TERMINAL NAME: 2.8MM TAB WITH LOCKING LANCE.

CRIMP	SIZE	TYPE	RANGE
WIRE	2.54 [.100 IN]	F	0.50mm <sup>2</sup> - 1.50mm <sup>2</sup>
INSUL	3.56 [.140 IN]	F	2.00-3.30 [.079-.130 IN]
WIRE STRIP LENGTH		APPL INSTRUCTION	
3.90-4.70 [.154-.185 IN]		408-8323	

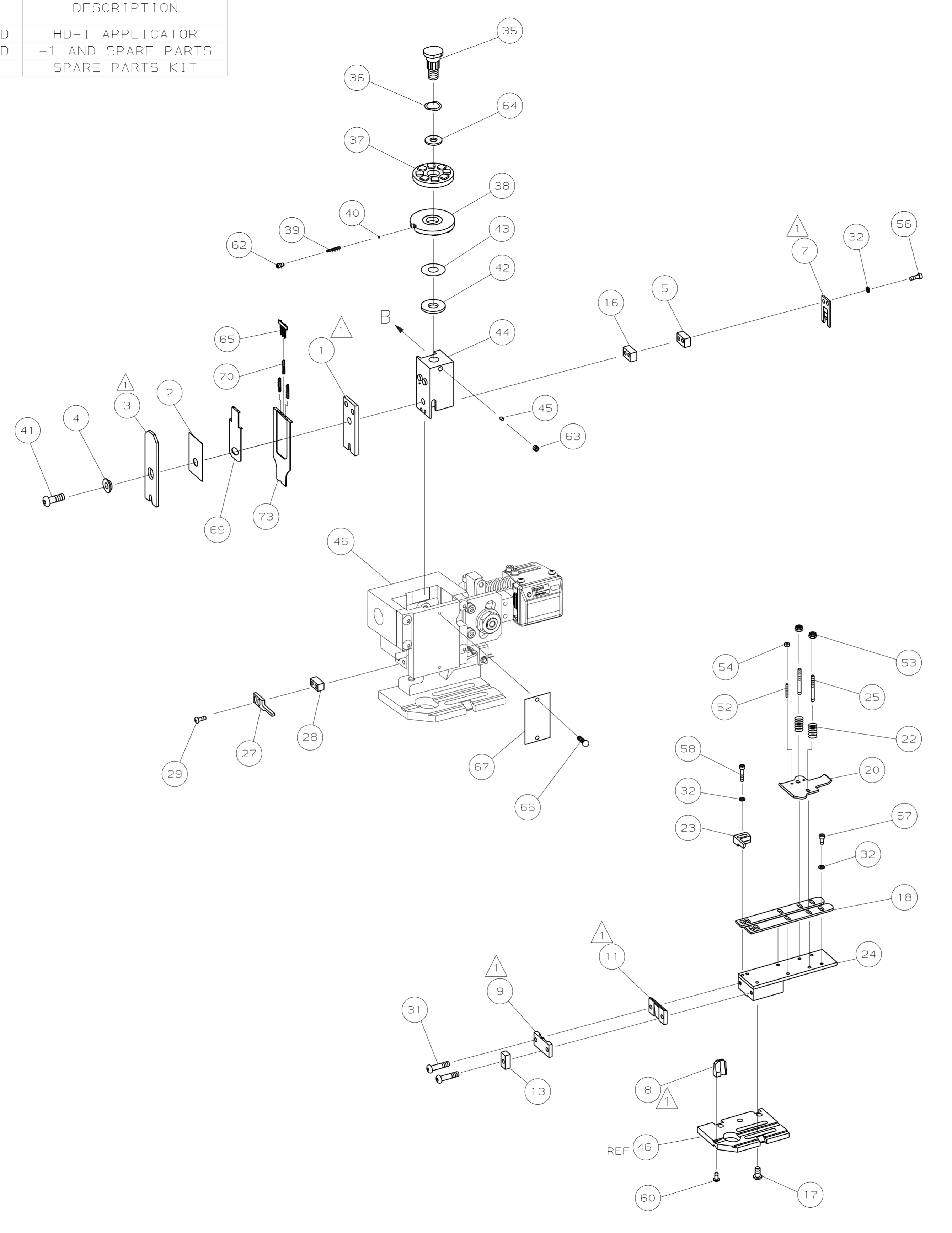
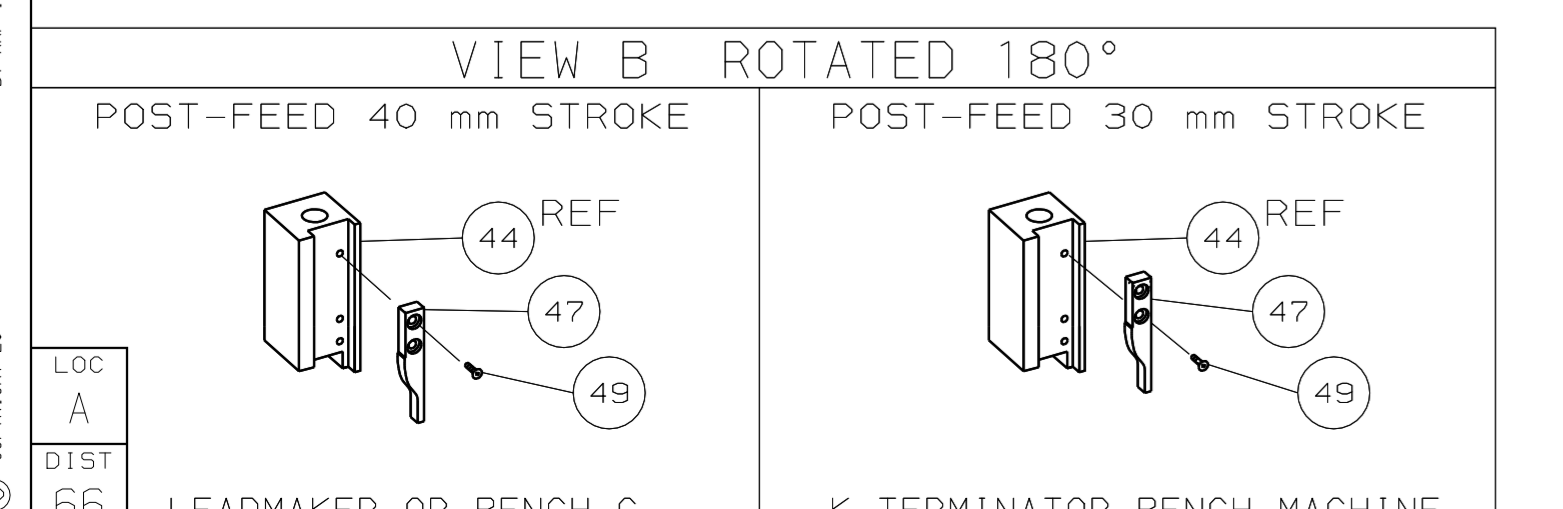
TERMINAL APPL SPEC	FEED
NONE	22.40 [.882 IN]

**TERMINALS APPLIED**

AMP PN	MFR PN			
1572833-1	6405.00	-	-	-
1572833-2	6405.02	-	-	-
-	-	-	-	-
-	-	-	-	-
-	-	-	-	-
-	-	-	-	-
-	-	-	-	-
-	-	-	-	-
-	-	-	-	-

WIRE SIZE	CRIMP HEIGHT	PIN PN AND LENGTH [IN]
1.50mm <sup>2</sup>	1.98 ±0.05 [.078 ±.002 IN]	7-354778-0 [.2845]
1.00mm <sup>2</sup>	1.83 ±0.05 [.072 ±.002 IN]	8-354778-3 [.2910]
0.75mm <sup>2</sup>	1.75 ±0.05 [.069 ±.002 IN]	8-354778-9 [.2940]
0.50mm <sup>2</sup>	1.68 ±0.05 [.066 ±.002 IN]	9-354778-5 [.2970]
-	-	-
-	-	-
-	-	-
-	-	-
-	-	-
-	-	-
-	-	-
-	-	-
-	-	-
-	-	-
-	-	-
-	-	-
-	-	-
-	-	-
-	-	-
-	-	-

- ▲ RECOMMENDED SPARE PARTS.
- 2. GREASE RAM, CAM, CAM FOLLOWER AND FEED ROD LIGHTLY.
- 3. LUBRICATE DAILY PER THE APPLICATOR INSTRUCTION SHEET SUPPLIED WITH THE APPLICATOR.
- ▲ ALL CRIMP DATA CALCULATED BY TYCO ELECTRONICS UK LTD.
- ▲ INSULATION RANGE SHOWN IS RANGE OF TERMINAL.



QTY	REQD	PER ASSY	PART NO	DESCRIPTION	ITEM NO
-	1	1	1490525-3	DEPRESSOR, WIRE	73
-	1	1	1339781	PRINT, APPLICATOR LOG SHEET	72
-	1	1	1338705-2	DOCUMENTATION PACKAGE	71
-	3	3	2-23147-2	SPRING, DEPRESSOR	70
-	1	1	1490524-1	SPACER, DEPRESSOR	68
-	1	1	461264-1	PLATE, IDENTIFICATION	67
-	2	2	21017-2	SCR,DRIVE (#2X.19) ID PLATE	66
-	1	1	1424350-1	HOLDER, PIN, WIRED	65
-	1	1	986950-1	WASHER, FLAT PRECISION	64
-	1	1	3-18031-0	SCR,SKT SET (M6X6) RAM	63
-	1	1	18023-9	SCR,SKT CAP (M4X6) CP DSC	62
-	1	1	18024-7	SCR,BHC (M4X10) ANVIL	61
-	1	1	18024-7	SCR,BHC (M4X10) ANVIL	60
-	2	2	1-18023-3	SCR,SHC (M4X16) HOLD DOWN	58
-	5	5	1-18023-0	SCR,SHC (M4X8) STRIP GUIDE	57
-	2	2	1-18023-3	SCR,SHC (M4X16) SLUG BLADE	56
-	2	2	18029-1	NUT, HEX (M3) DRAG	55
-	2	2	986965-1	NUT, HEX SL (M4) DRAG STUD	54
-	2	2	2-18032-2	SCR,SKT SET (M3X10) DRAG	53
-	1	1	18024-3	SCR,BHC (M3X10) CAM	52
-	1	1	18024-3	SCR,BHC (M3X10) CAM	51
-	1	1	1338676-1	CAM, POST-FEED 30 & 40 mm ST	50
-	1	1	1338662-1	APPLICATOR, BASIC (SUBASSY)	49
-	1	1	690191-1	PLUG, NYLON	48
-	1	1	1320998-1	RAM	47
-	1	1	690125-1	WASHER, LAMINATED	46
-	1	1	690124-1	WASHER, RAM	45
-	1	1	2-18024-6	SCREW,BHC (M8X25) CRIMPER	44
-	1	1	23241-1	BALL, STEEL	43
-	1	1	2-22278-7	SPRING, COMPRESSION	42
-	1	1	1320922-1	DISC, INSULATION	41
-	1	1	354777-1	WIRE DISC, PLASTIC	40
-	1	1	22480-5	WASHER, SPRING	39
-	1	1	690212-1	POST, RAM	38
-	9	9	18025-2	WASHER, LOCK (M4) SHEAR BL	37
-	2	2	1-18024-0	SCR,BHC (M4X20) SHEAR PL	36
-	2	2	18024-8	SCR,BHC (M4X12) STRIPPER	35
-	1	1	3-690451-2	SPACER, STRIPPER	34
-	1	1	240639-1	STRIPPER	33
-	2	2	1320906-1	DRAG, STUD	32
-	1	1	1320995-1	PLATE, STRIP GUIDE	31
-	1	1	240825-1	PLATE, STRIP HOLD DOWN	30
-	2	2	4-22281-1	SPRING, DRAG	29
-	1	1	1338665-1	DRAG, STOCK	28
-	2	2	1338663-5	GUIDE, LOWER STRIP	27
-	4	4	1-18024-8	SCR,BHC (M6X12) STRIP GD PL	26
-	1	1	1338708-1	SPACER, SLUG BLADE	25
-	1	1	2-690481-0	SPACER, HOLD DOWN	24
-	1	1	240644-1	PLATE, REAR SHEAR	23
-	1	1	690482-5	PLATE, FRONT SHEAR	22
-	1	2	2-1333218-4	ANVIL	21
-	1	1	690474-5	BLADE, SLUG	20
-	1	1	2-240641-2	SPACER, SLUG BLADE	19
-	1	1	238009-8	SPACER, BLOCK CRIMPER	18
-	1	2	7-1424909-8	CRIMPER, INSULATION	17
-	1	1	455888-4	SPACER, CRIMPER	16
-	1	2	1-456407-3	CRIMPER, WIRE	15
-	77	-71	-1	PART NO	DESCRIPTION

DIMENSIONS: mm [INCHES]		MATERIAL		FINISH	
DO NOT SCALE PRINT.		HT TR		FIN	
TOLERANCES UNLESS OTHERWISE SPECIFIED:					
1 PLC DEC ±		17-OCT-05 APP		17OCT05	
2 PLC DEC ±		L.L.OFFTHOUSE		M.CLIFFORD	
3 PLC DEC ±		CHK -		REL T1NOV05	
ANGLES ±		L.L.OFFTHOUSE		L.L.OFFTHOUSE	
SURF TEXTURE: ✓		REMOVE BURRS, BREAK SHARP EDGES RO.38 MAX		AMP Tyco Electronics Harrisburg, PA 17105-3808	
NAME			MACHINE REF		
END FEED HD-I APPLICATOR			HD-I APPL		
SCALE		DWG NO		SHEET REV	
-		1339781		1 OF 1 A	
CAGE CODE		CUSTOMER AND ASSEMBLY DRAWING		RESTRICTED TO	
00779					

THIS DRAWING IS A CONTROLLED DOCUMENT.

LAYOUT L1339781  
SET UP GAGE 458638-3

RELEASED FOR PUBLICATION  
BY AMP INCORPORATED. ALL RIGHTS RESERVED.  
THIS DRAWING IS UNPUBLISHED.  
COPYRIGHT 20