

REV. A	SHEET 1 OF 3	DOCUMENT NO. 10-504637-009
M REVISIONS		
LTR	DESCRIPTION	DATE
A	PRODUCTION RELEASE	6/18/18

DOCUMENT NO. 10-504637-009

SHEET 1 OF 3

REV. A

D

C

A

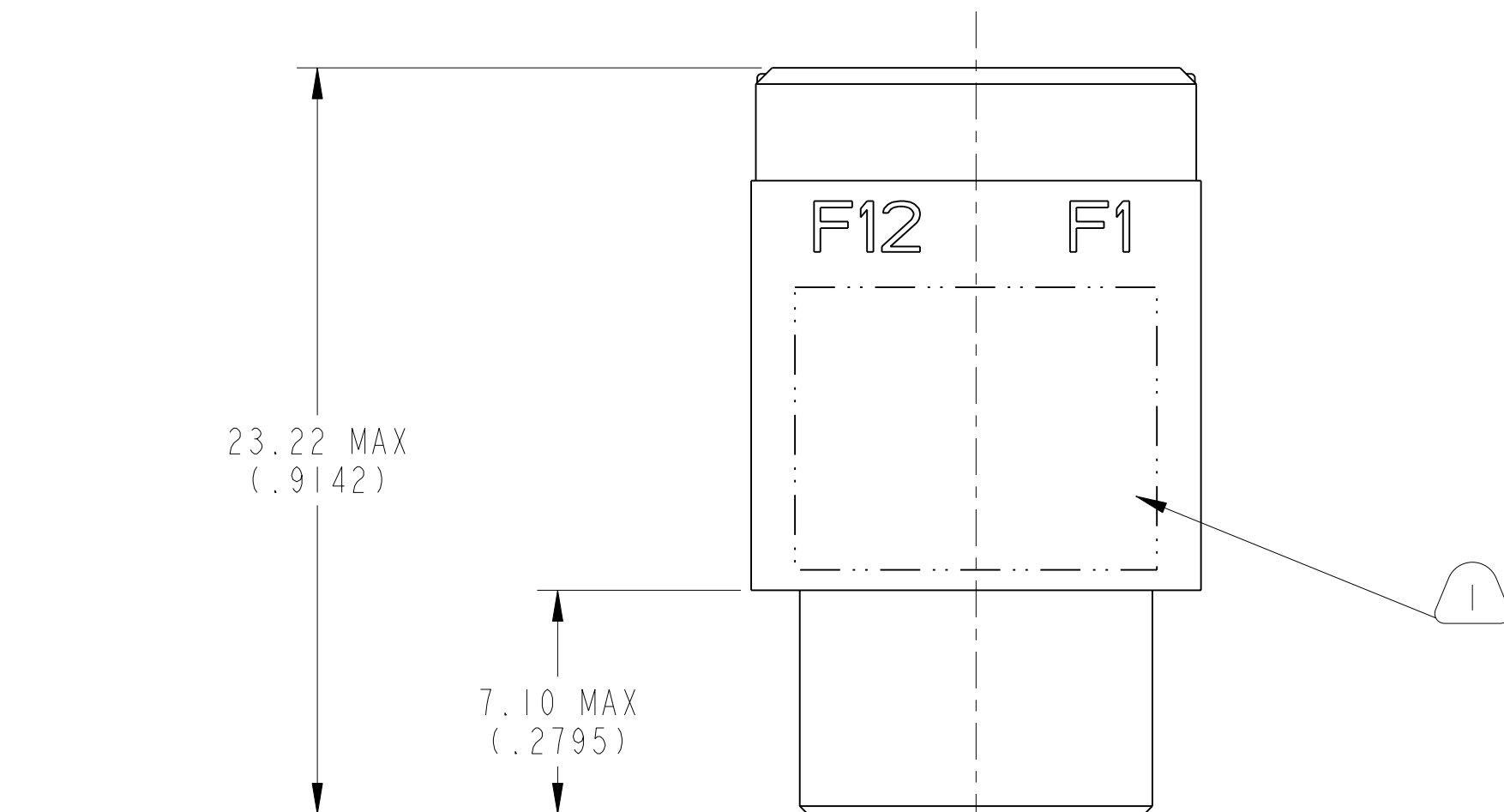
SHEET 1 OF 3

DOCUMENT NO. 10-504637-009

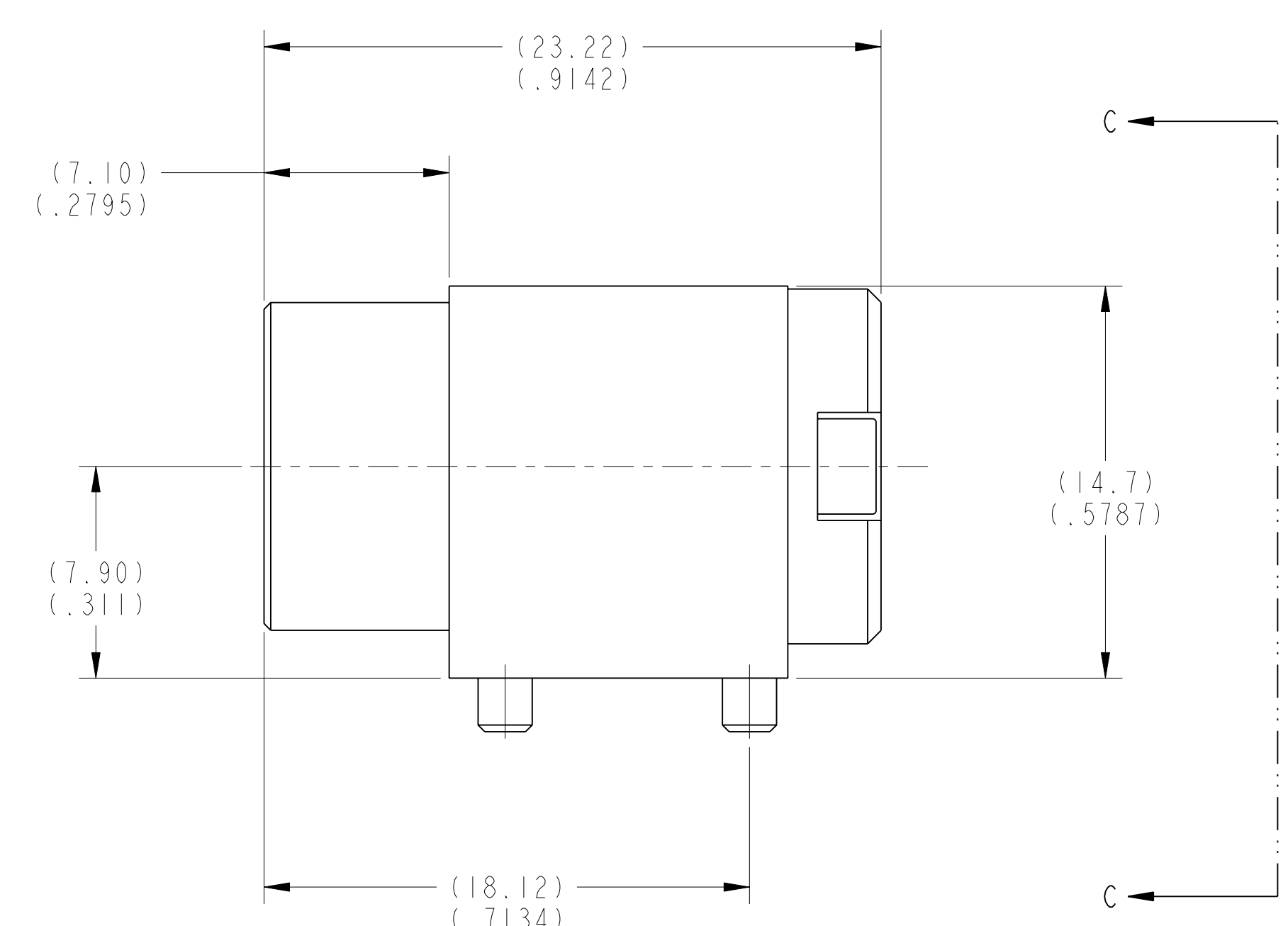
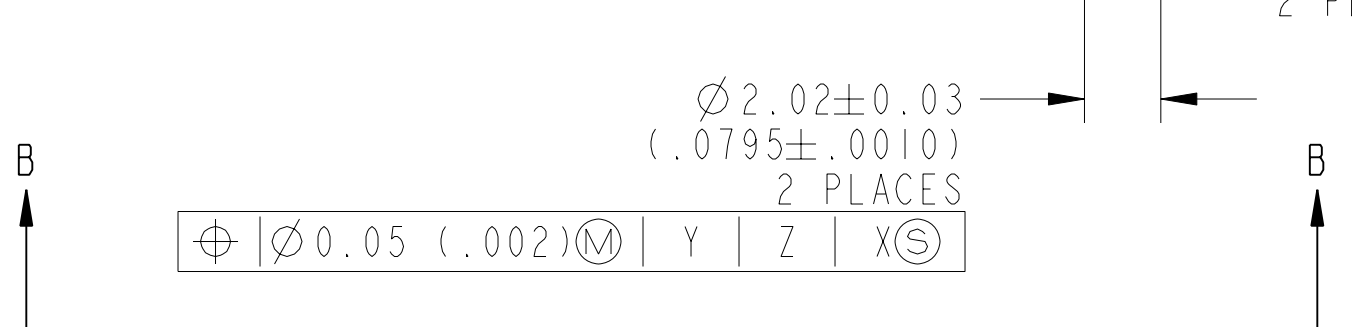
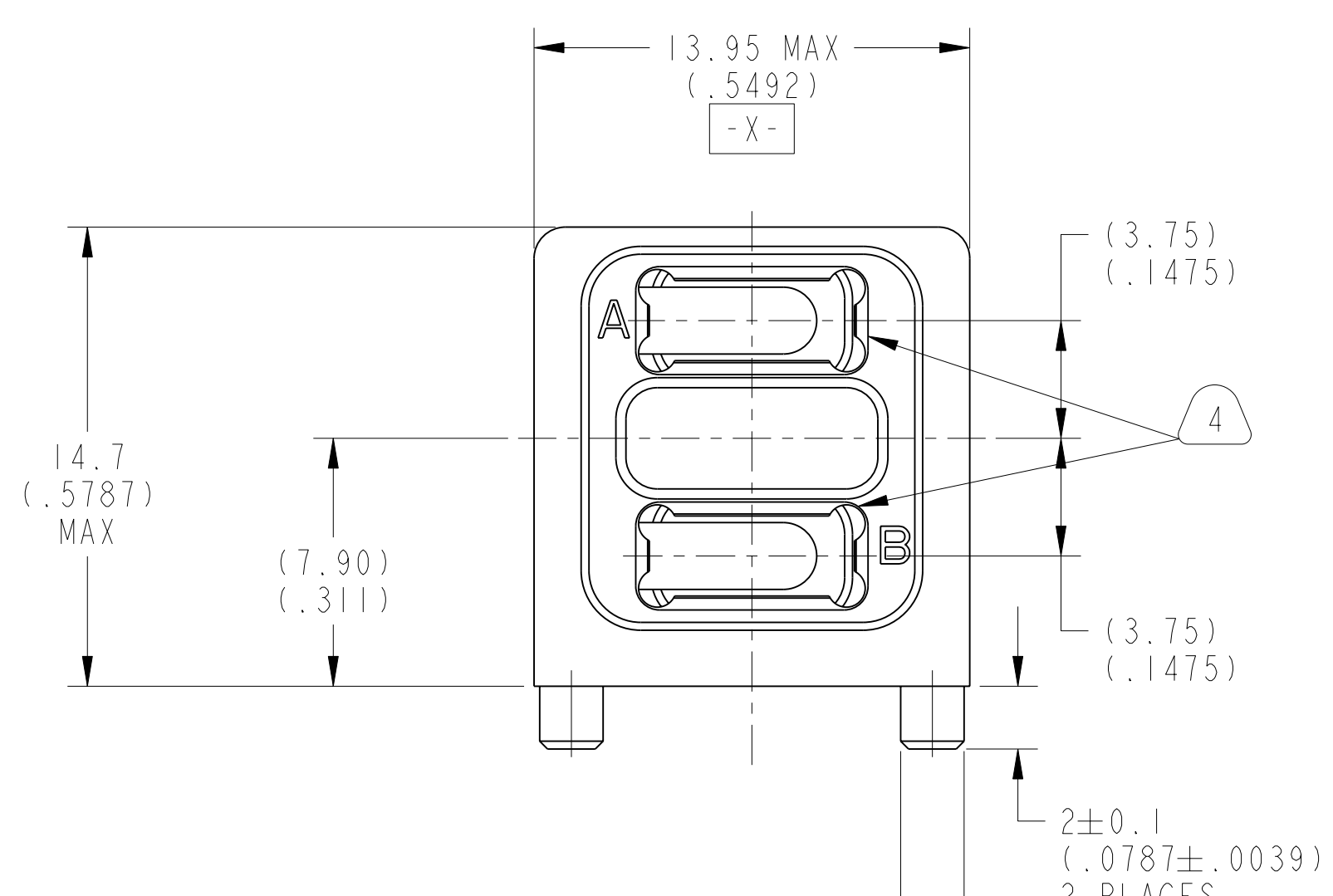
A

U

I



-Y-



METRIC DRAWING

SEE SHEET 2

NOTES:
 THE USE OF THIS DOCUMENT IS UNLIMITED. HOWEVER, DOCUMENTS REFERENCED HEREON MAY CONTAIN LIMITED RIGHTS DATA.

SCALE 5.000

NONE	PRO/ENGINEER INFORMATION
	Pro/e Model Used:
	10-504637-009.DWG.ASSEM
	Drawing Name:
	10-504637-009

UNLESS OTHERWISE SPECIFIED	SPECIFICATIONS
LINEAR DIMENSIONS ARE IN MILLIMETERS	MATERIAL SPEC.
TOLERANCES:	NONE
.XXXX = ±.NA ANGLES= ±2°	
.XXX = ±NA	
.XX = ±.13	
.X = ±.25	
	PROCESS SPEC.
	9-3856-5
	9-3895

POS	QTY	PART NUMBER	DESCRIPTION	NOTE

PARTS LIST			
AMPHENOL CORPORATION			
40-60 DELAWARE AVENUE			
SIDNEY, N.Y. 13838			
CONNECTOR, FIBER OPTIC, MODULE,			
2 MT SPECIAL			
(VITA 66.4 ENVELOPE)			
SIZE	CAGE CODE	DOCUMENT NO.	REV.
C	77820	10-504637-009	A
SCALE: 3.0	REF: 10-504637-008	SHEET 1 OF 3	

FORMAT: C-U-L-REV.B

DOCUMENT NO. 10-504637-009

SHEET 1 OF 3

REV. A

10-504637-009

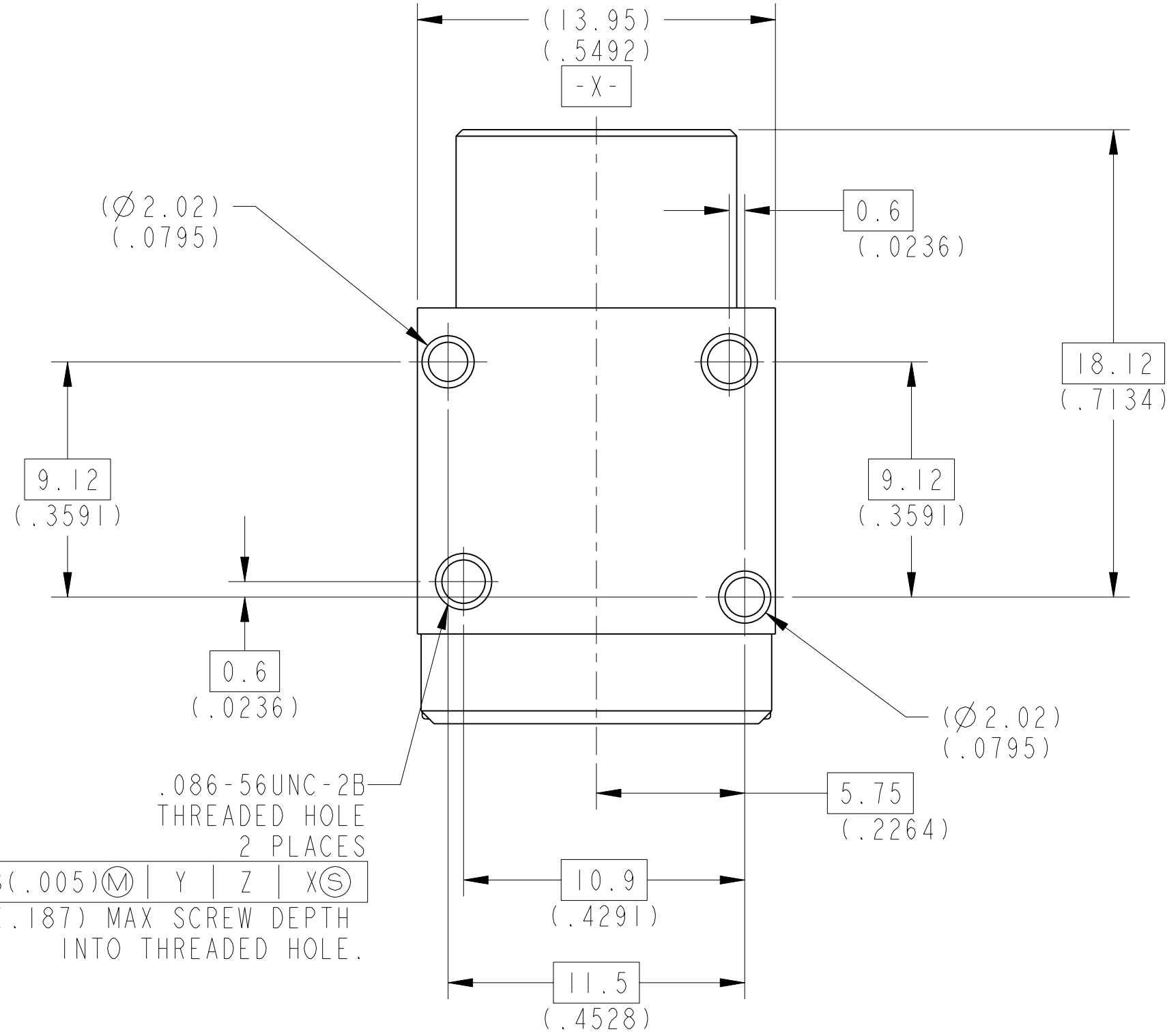
SHEET 2 OF 3

REV. A

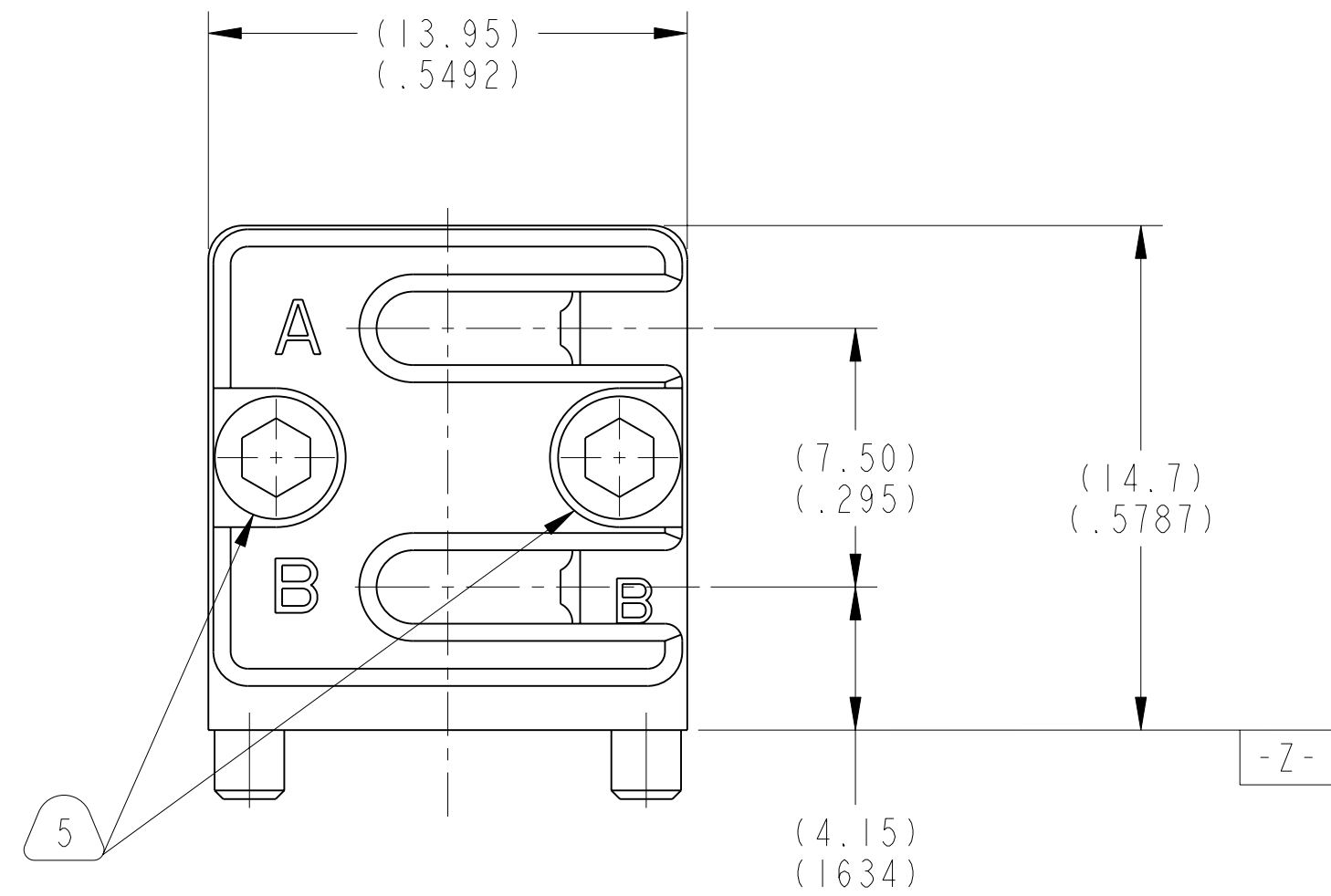
C

B

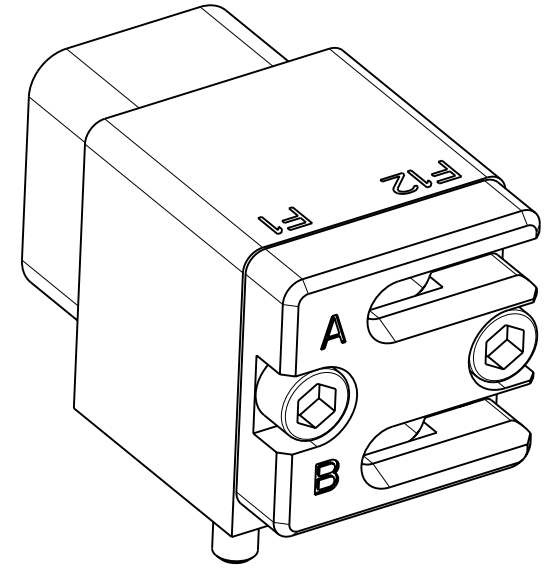
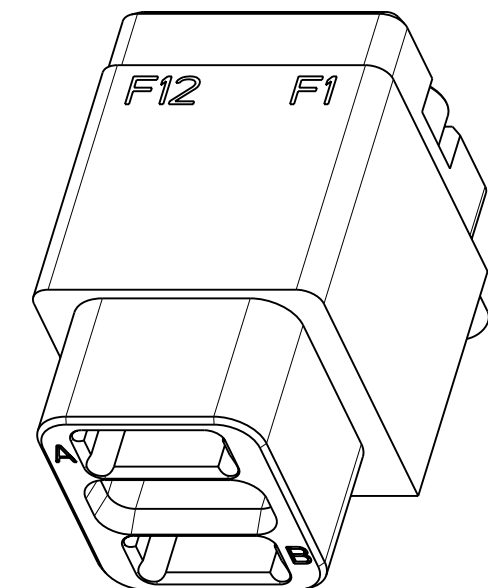
A



VIEW AT B



VIEW AT C



5. RETAINER SCREWS TO BE TIGHTENED TO A TORQUE OF 2 -3 IN-LBS. RETAINER SHOULD BE BOTTOMED ON CONNECTOR BODY.
4. INSERT CAVITIES ARE FOR A FIBER OPTIC MT FERRULE PER IEC 61754-5 MT FERRULES, PIN CLAMP ASSEMBLIES, SPRINGS, AND ASSOCIATED RIBBON CABLE ARE NOT PART OF THIS ASSEMBLY.
3. FOR CONNECTOR INSTALLATION ILLUSTRATION SEE SHEET 3.
2. FOR MATING BACKPLANE CONNECTOR ASSEMBLY, SEE DRAWING 10-504639-007.
1. BLACK INK STAMP "APH" 77820 PART NUMBER AND DATE CODE ON INDICATED SURFACE PER 9-3856-5. DATE CODE PER 9-3895. CHARACTERS TO BE 1.6±.51 (.062±.005 INCH). HIGH. ADDITIONAL INFORMATION MAY BE REQUESTED BY PURCHASE ORDER. STAMP ING CAN BE ON BOTH SIDES OF PART.

MATERIALS AND FINISHES

COMPONENT	MATERIAL/ FINISH
MAIN BODY	BODY - MATERIAL - ALUM. ALLOY PER AMS 4150 FINISH - CHROMATE TREATMENT PER MIL-C-5541, CL 3 HELICAL INSERTS - STAINLESS STEEL 304 SERIES PASSIVATED
MT RETAINER	BODY - MATERIAL - ALUM. ALLOY PER AMS 4150 FINISH - CHROMATE TREATMENT PER MIL-C-5541, CL 3 SCREW - STAINLESS STEEL 300 SERIES PASSIVATED

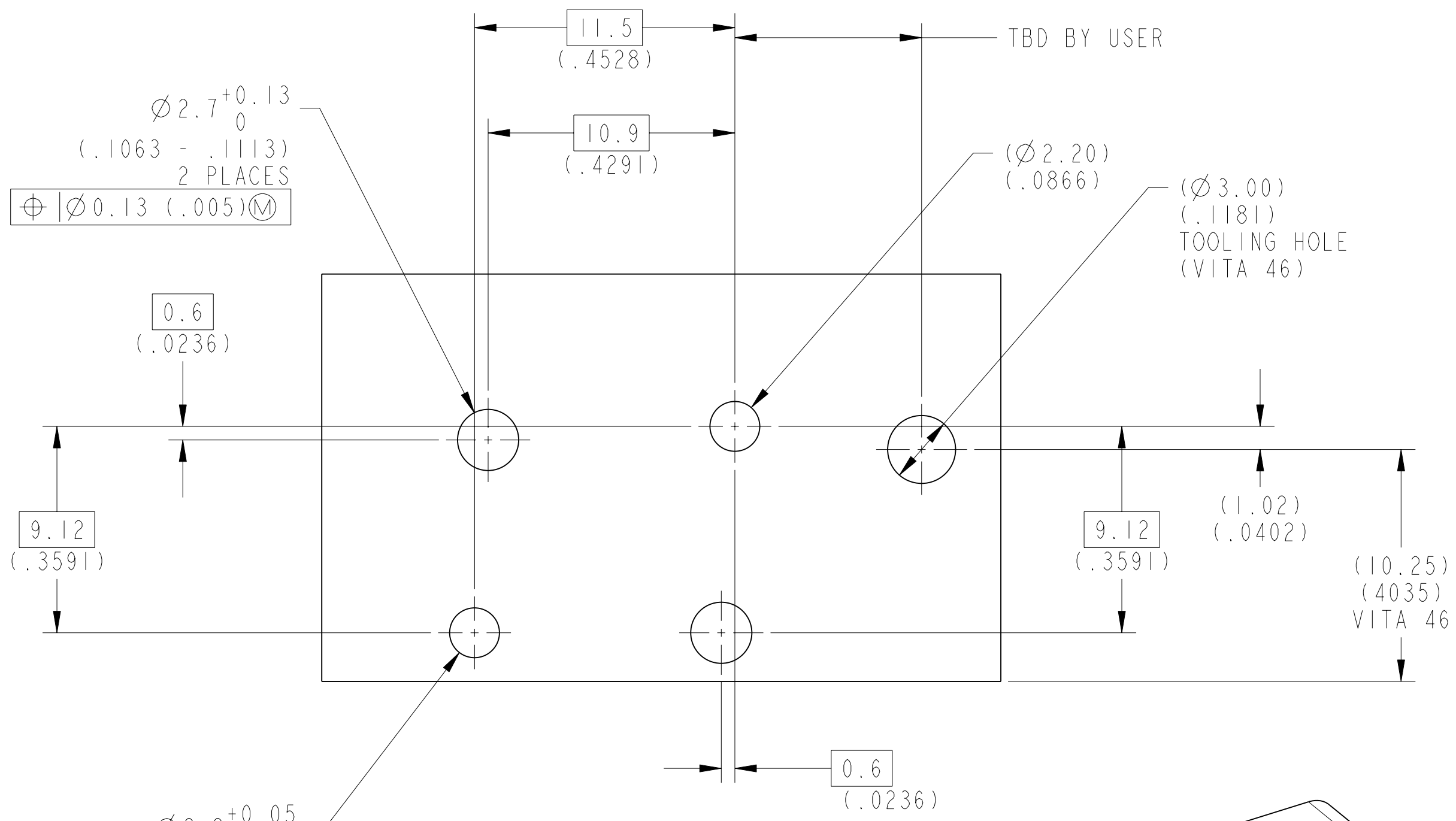
THE USE OF THIS DOCUMENT IS UNLIMITED. HOWEVER, DOCUMENTS REFERENCED HEREON MAY CONTAIN LIMITED RIGHTS DATA.

SIZE C	CAGE CODE 77820	DOCUMENT NO. 10-504637-009	REV. A
SCALE: 3.0	REF. 10-504637-008	SHEET 2 OF 3	

REV. A SHEET 2 OF 3

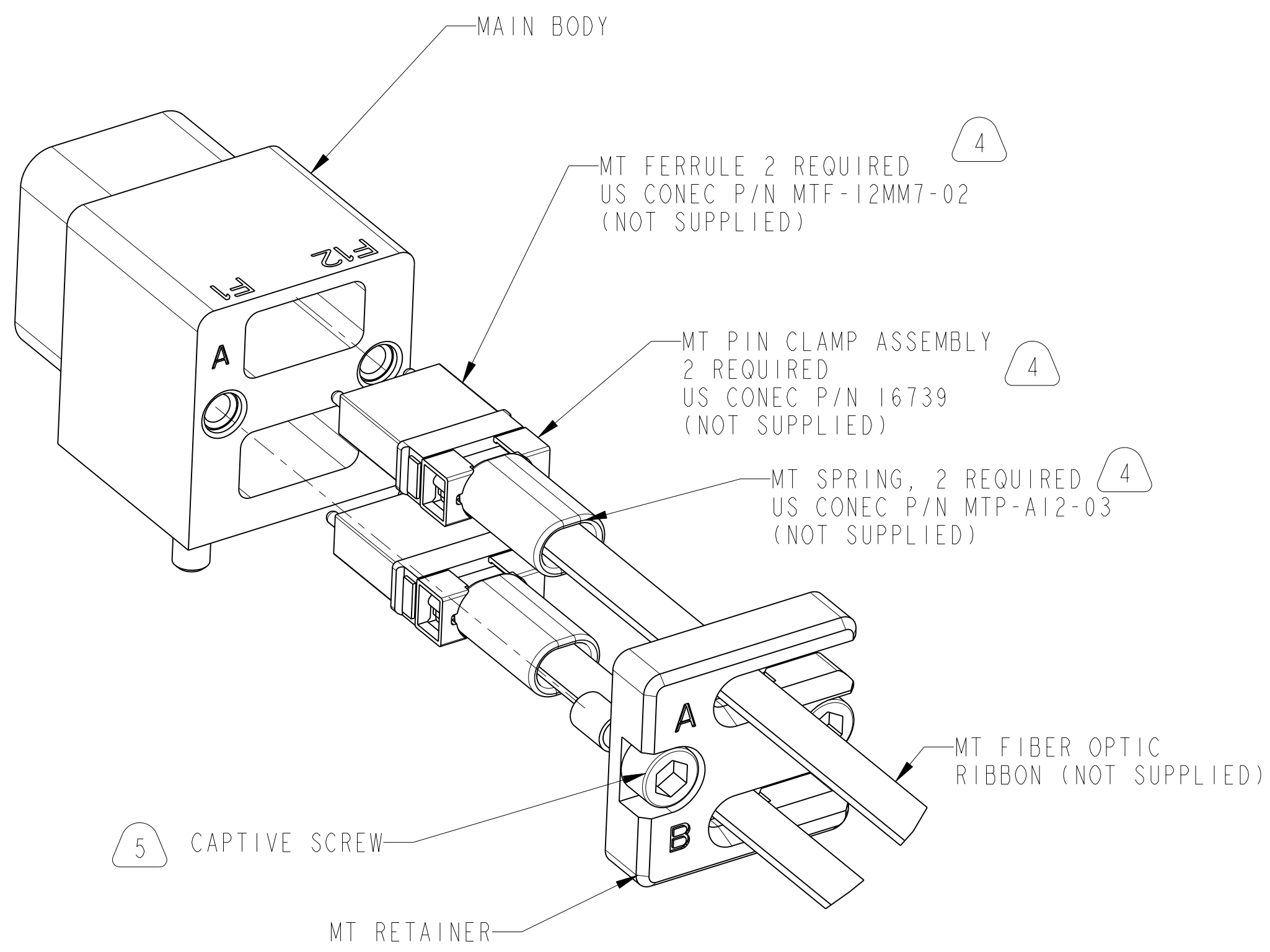
10-504637-009

A



SUGGESTED MODULE PCB INTERFACE DIMENSIONS

SCALE 5.000



REAR EXPLODED ASSEMBLY VIEW

SCALE 4.000

THE USE OF THIS DOCUMENT IS UNLIMITED. HOWEVER, DOCUMENTS REFERENCED HEREON MAY CONTAIN LIMITED RIGHTS DATA.

SIZE C	CAGE CODE 77820	DOCUMENT NO. 10-504637-009	REV. A
SCALE: 3.0	REF. 10-504637-008	SHEET 3 OF 3	

DOCUMENT NO. 10-504637-009
SHEET 3 OF 3
REV. A
C
B
A
FORMAT: C-UIE-Rev-B

D
C
A
REV. A
SHEET 3 OF 3
DOCUMENT NO. 10-504637-009
A