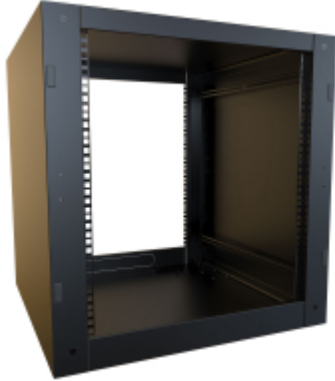




Quality Products. Service Excellence.

Server Rack Cabinet *RCSC Series*

1,500 lbs (680 kg) Weight Capacity



Ideal for your AV, IT/Server and Homelab applications, the RCSC Rack Cabinet features a stacking design that allows for up to three (3) cabinets* to be stacked atop each other. This Rack Cabinet is fully loaded and includes two (2) pairs of infinitely adjustable sliding EIA square-hole rails, punch-outs for cable entry and/or fan cooling and comes in a variety of sizes and depths.

The unique stacking feature enables your cabinet space to grow as your needs do. *Stack up to three (3) 12U, two (2) 24U or one (1) of each cabinet atop each other using the required **RCSCBAY** buying kit. The 12U cabinet is a great starter cabinet for any small to medium-sized business.

Features:

- Constructed in 16-gauge steel.
- Includes two (2) pairs of infinitely adjustable 19" EIA compliant square-hole mounting rails with rack unit markings.
 - Starter pack of **CAGKIT1032-25** screws and cage nuts included with 12U units.
 - Starter pack of **CAGKIT1032-50** screws and cage nuts included with 24U units.
- Four (4) embosses are included with support for optional levelling feet or casters.
- Grounding studs are provided on the body.
- The top and bottom of the RCSC include two (2) laser knockouts (per side) for cable-entry or fans (includes gasket strip material).
- Includes a laser knockout rear gland plate for floor-level cable entry.
- Ships unassembled in a flat pack container for easy handling and shipping protection.

Specifications:

- Mounting rails are infinitely adjustable in-depth and are fabricated of heavy-duty 14-gauge steel, painted smooth black.
- Optional doors are available in solid, tinted acrylic with venting (see above-left) and high airflow vented.
 - Snap-in hinges can be mounted without having to bolt on from inside the cabinet. In addition, the hinges can be mounted on the left or right.
- High airflow perforated doors for both the front and rear of the cabinet are suggested for most server applications.
 - Perforated doors meet server manufacturer Free-Air-Ratio (FAR) requirements at 63%.
- For 36" depth cabinet side panels include cable entry knockouts.
- 1,500 lbs (680 kg) **load rating**.
- Finished in textured RAL9005 black powder paint.
- TAA-compliant for GSA Schedule purchases.
- RoHS Compliant.
- Manufactured in North America within an ISO 9001:2015 certified facility.



Note: We recently discontinued some sizes from this series. Discontinued sizes are available while quantities last. For alternative solution assistance, **please connect with our product solutions.**

Gallery



Accessories

- Universal Rack Shelf
- Rack Mount Locking Storage Drawer
- Sliding Keyboard Shelf
- PDUs and Outlet Strips
- Adjustable Depth Front-To-Rear Cable Manager
- Horizontal Lacing Strip
- Rack and Cabinet Caster Set
- Leveling Feet
- Ground Stud Kit
- Adjustable Depth Shelf
- Four Post Mounting Sliding Shelf
- Mounting Screw and Cage Nut Combo-Pack
- Rack Unit Label
- Horizontal Finger Cable Manager
- Rack Panels
- Grounding & Bonding
- Fan Kits

Part No.	Overall Dimensions			Rack Units	Usable Mounting Dimensions		
	Height	Width	Depth		Height	Width	Depth
RCSC1902136BK1	25.00	24.00	36.00	12U	21.00	19.00	34.42
RCSC1904236BK1	46.00	24.00	36.00	24U	42.00	19.00	34.42

RCSC On Clearance (Available while Supplies Last)

Part No.	Stock As Of	Overall Dimensions			Rack Units	Usable Mounting Dimensions			Similar Size
	June 1, 2023	Height	Width	Depth		Height	Width	Depth	Part No,
RCSC1902124BK1	0	25.00	24.00	24.50	12U	21.00	19.00	23.00	RCK12U25BK
RCSC1902131BK1	8	25.00	24.00	31.50	12U	21.00	19.00	30.00	RCK12U32BK
RCSC1904224BK1	9	46.00	24.00	24.50	24U	42.00	19.00	23.00	RCK24U25BK
RCSC1904231BK1	6	46.00	24.00	31.50	24U	42.00	19.00	30.00	RCK24U32BK

Optional Doors

Part No.	Part No.	Part No.	Use with Cabinet Panel Height	
			Units	Rack Units
Solid Door	Vented Door	Vented Window Door		
RCSC19021SDBK1	RCSC19021VDBK1	RCSC19021WDBK1	21.00	12U
RCSC19042SDBK1	RCSC19042VDBK1	RCSC19042WDBK1	42.00	24U

RCSC Baying Kit

Part No.	RCSCBAY
----------	---------

Tags: knock-down, knock down, homelab

Data subject to change without notice

