

DETAIL A  
SCALE 20:1

HARTIG & SOHN

NOTES:

- 1 PRODUCT AS SHOWN 1551246-2.
- 2 MARKING: "V6 YWWS", WHERE  
V6 = VERSION MARKING,  
YWWS = PRODUCTION DATE (YEAR, WEEK, DAY),  
S = SHIFT (D = DAY, N = NIGHT).
- 3 COPLANARITY 0,08 MAX. 13 SOLDER TAILS + HOUSING BOTTOM RIBS.
- 4 INDICATED SOLDER TAIL AREA TO BE FREE OF OVER MOLDING FLASH.

1551246-2	1551246-1	LOOSE PIECE PART
PART NR.	MAKE FROM	DESCRIPTION

LOC	
H	
DIST	

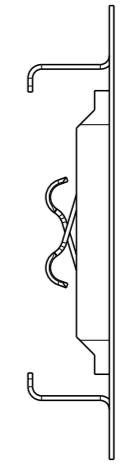
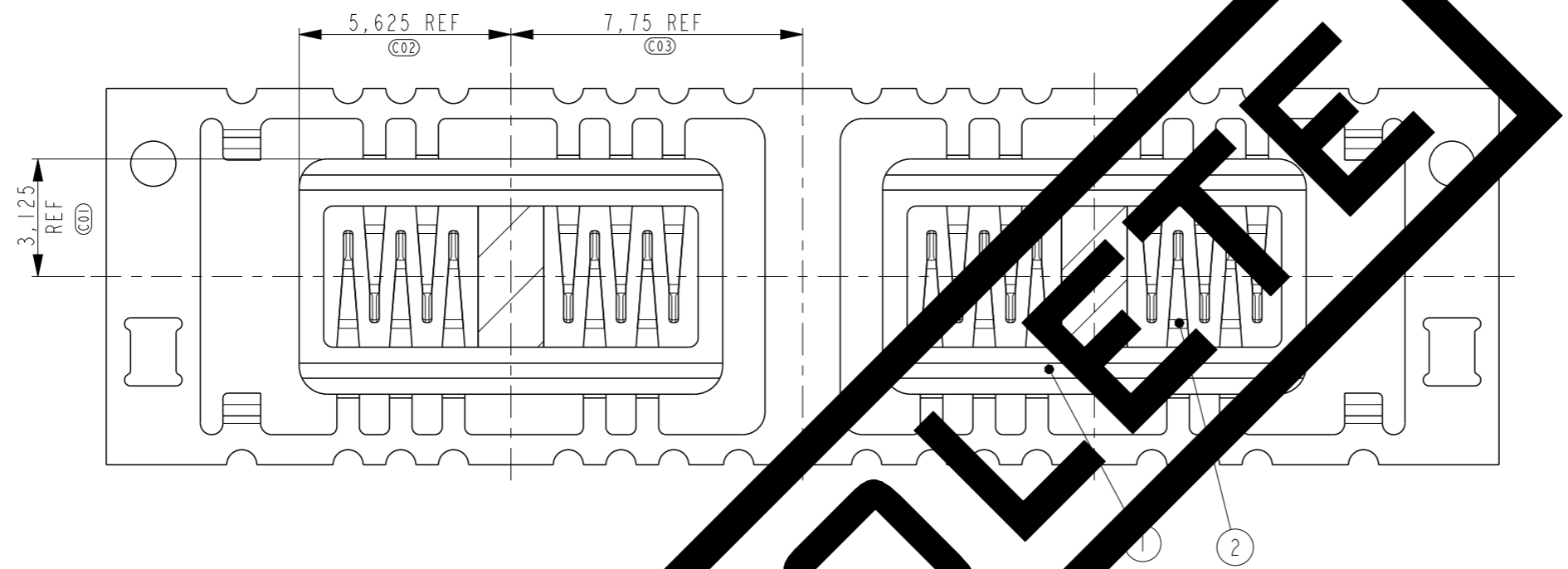
P	LTR	REVISION RECORD	DATE	DWN	APVD
A1		ECR-21-124751	29JUL2022	SSM	JD
A		ECR-10-016181	03AUG2010	PW	JD
II		CHANGE DIM A06	25MAR2010	PW	JD

DIMENSIONS: mm		TOLERANCES UNLESS OTHERWISE SPECIFIED:	
	0 PLC ±0,2	1 PLC ±0,1	
	2 PLC ±0,05	3 PLC ±0,025	
	4 PLC ±		
ANGLE±	-		
SURFACE TEXTURE			

DWN	18-May-09	MATERIAL		HEAT TREAT	
CHK	P.Willems				
APVD	M.Gosselink	Tyco Electronics Corporation 's-Hertogenbosch, Nederland			
NAME	J.Dittner				
10POS DOUBLE ROW B+B CONNECTOR					
SCALE	6:1	SIZE	A3	DRAWING NO	1551246
SHEET	1	OF	3	REV	A1

USED ON -

DWG NO 1551246  
THIS DRAWING IS A CONTROLLED DOCUMENT



OBESO LETTE

THIS INFORMATION IS CONFIDENTIAL AND PROPRIETARY TO TYCO ELECTRONICS CORPORATION AND ITS WORLDWIDE SUBSIDIARIES AND AFFILIATES. IT MAY NOT BE DISCLOSED TO ANYONE, OTHER THAN TYCO ELECTRONICS PERSONNEL, WITHOUT WRITTEN AUTHORIZATION FROM TYCO ELECTRONICS CORPORATION, HARRISBURG, PENNSYLVANIA USA.

LOC H  
DIST -

P	LTR	REVISION RECORD	DATE	DWN	APVD
-	-	SEE SHEET 1	-	-	-

DIMENSIONS: mm	TOLERANCES UNLESS OTHERWISE SPECIFIED:
	0 PLC ±0,2 1 PLC ±0,1 2 PLC ±0,05 3 PLC ±0,025 4 PLC ±
ANGLES±	-
SURFACE TEXTURE	

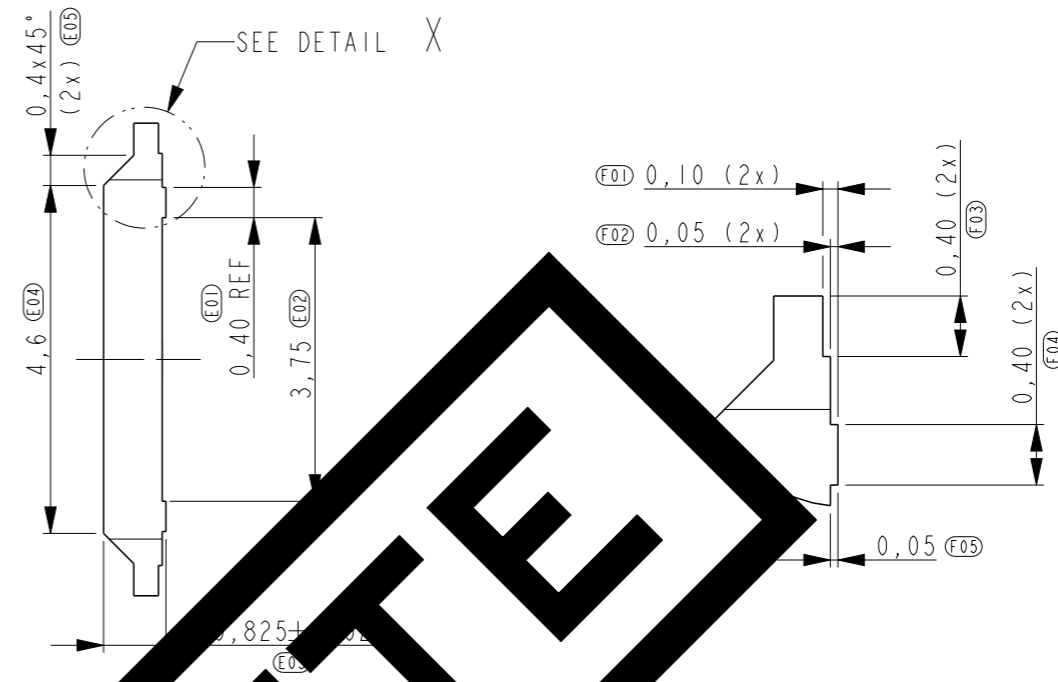
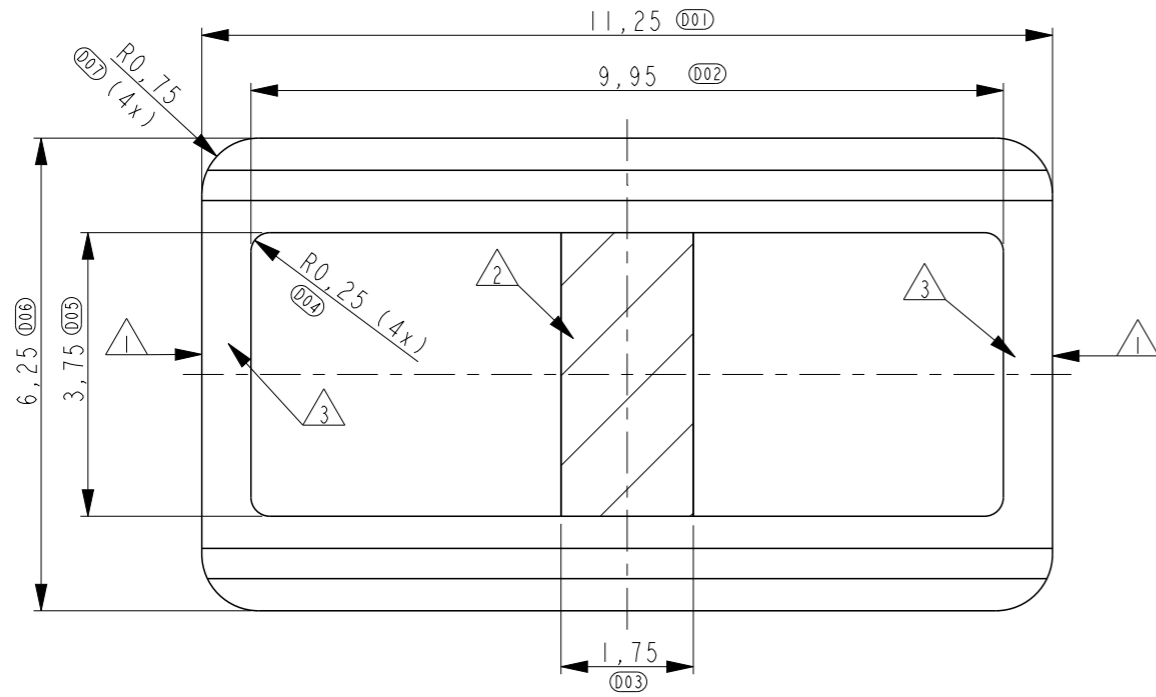
ITEM NO.	DESCRIPTION	PARTNUMBER	QUANTITY
2	PLATED CONTACT STRIP	1551245-2	1
1	1551246-1 HOUSING	SEE SHEET 3	1

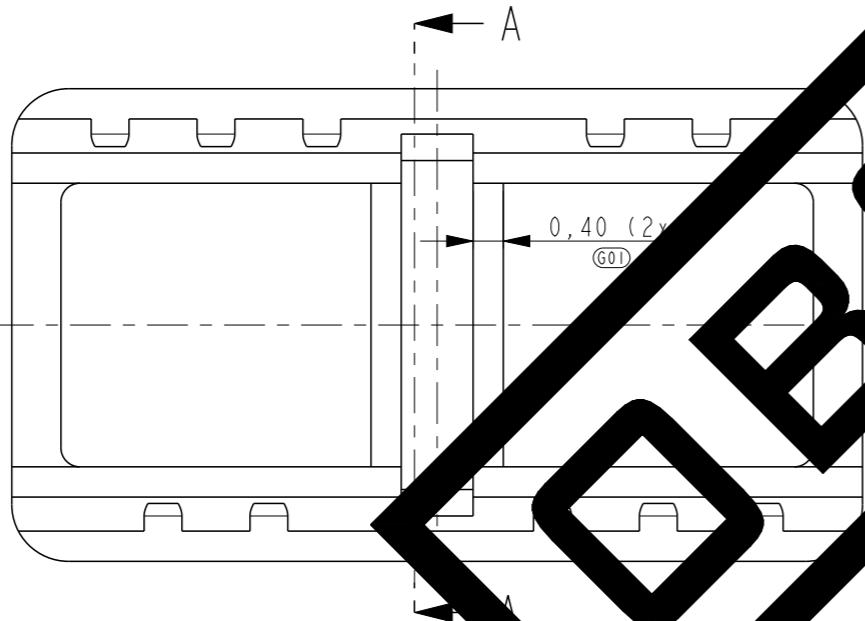
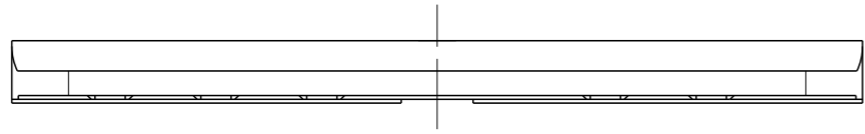
DWN	18-May-09	MATERIAL	HEAT TREAT
P.Willems	-	-	-
CHK	-	Tyco Electronics Corporation 's-Hertogenbosch, Nederland	
M.Gosselink	-		
APVD	-		
NAME 10POS DOUBLE ROW B+B CONNECTOR			
SCALE	SIZE	DRAWING NO	SHEET OF REV
10:1	A3	1551246	2 OF 3 A1

1551246-1

D  
C  
B  
A



DETAIL X  
SCALE 20:1



SECTION A-A

NOTES:

- 1 INJECTION POINT 0,1mm RECESSED. USE 1 OR 2 POSITIONS.
- 2 AREA TO BE FREE OF EJECTOR MARKINGS, SCRATCHES OR MOLDING DEFECTS.
- 3 MOLD CAVITY IDENTIFICATION 0,05 RECESSED TO BE PLACED IN 1 OF 2 INDICATED POSITIONS.
- 4 COMPLY WITH SPEC. 115-40-1. FLASH 0,05 MAX. EJECTOR PIN MARKS RECESSED, 0,10 MAX.

PARTNUMBER	N/A
BASE MATERIAL	
COMPOUND NR.:	704967-1
COMMERCIAL NAME:	ZENITE 5154L
DESCRIPTION:	LCP
FILLER:	45% GLASS FILLED
COLOUR:	BLACK
MATERIAL SPEC.:	100-1353-1
PROCESS	
MASTERBATCH:	-
COLOUR:	-
VIRGIN OR REGRIND:	25% REGRIND MAX
PRODUCT	
VOLUME [mm3]:	22,75
WEIGHT [g]:	-

DWN P.Willems	18-May-09	MATERIAL -	HEAT TREAT -
CHK M.Gosselink	-	Tyco Electronics Corporation 's-Hertogenbosch, Nederland	
APVD J.Dittner	-		
NAME 10POS DOUBLE ROW B+B CONNECTOR			
SCALE 10:1	SIZE A3	DRAWING NO 1551246	SHEET 3 OF 3 REV A1

DIMENSIONS: mm	TOLERANCES UNLESS OTHERWISE SPECIFIED:
	0 PLC ±0,2 1 PLC ±0,1 2 PLC ±0,05 3 PLC ±0,025 4 PLC ±
ANGLE±	-
SURFACE TEXTURE	

SEE SHEET 1					
P	LTR	REVISION RECORD	DATE	DWN	APVD

LOC H
DIST -

THIS INFORMATION IS CONFIDENTIAL AND PROPRIETARY TO TYCO ELECTRONICS CORPORATION AND ITS WORLDWIDE SUBSIDIARIES AND AFFILIATES. IT MAY NOT BE DISCLOSED TO ANYONE, OTHER THAN TYCO ELECTRONICS PERSONNEL, WITHOUT WRITTEN AUTHORIZATION FROM TYCO ELECTRONICS CORPORATION, HARRISBURG, PENNSYLVANIA USA.