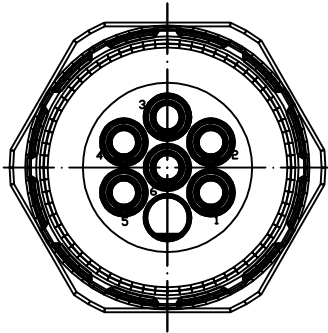
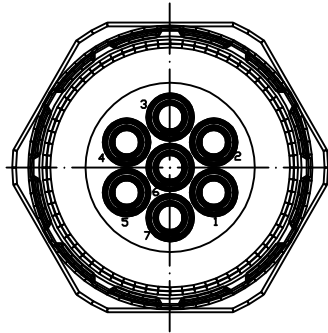


# Views from "X" rotated

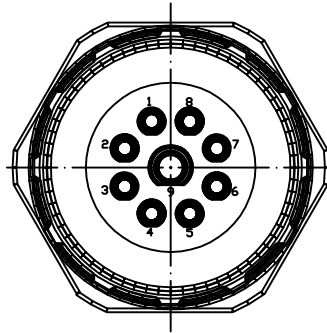
6-Pole



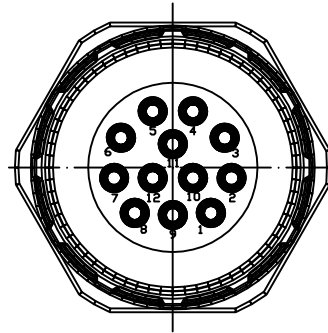
7-Pole



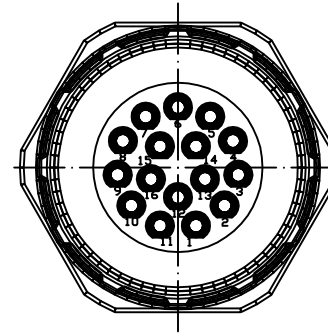
9-Pole  
(8+1)



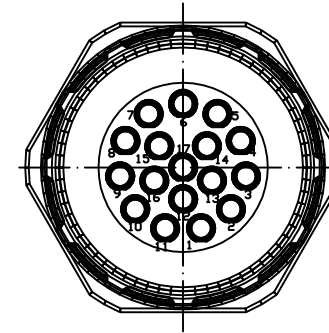
12-Pole



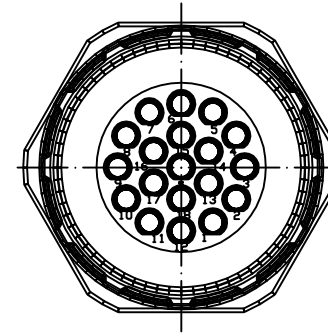
16-Pole



17-Pole

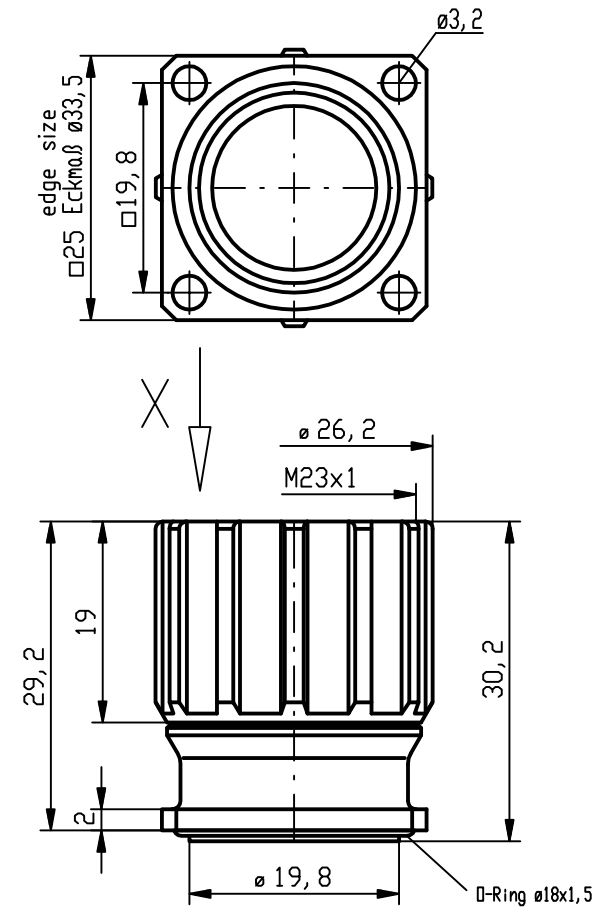


19-Pole  
(16+3)



Cable Diameter	Solder Contacts	Crimp Contacts	Without Contacts
6 Pole	KRS6G20-553 1202310001	KRS6G20-403 1202310002	KRS6G20-003 1202310003
	Crimp range*	0,75-2,5mm <sup>2</sup>	
7 Pole	KRS7G20-553 1202310004	KRS7G20-403 1202310005	KRS7G20-003 1202310006
	Crimp range*	0,75-2,5mm <sup>2</sup>	
9 Pole (8+1)	KRS9G20-553 1202310007	KRS9G20-423 1202310008	KRS9G20-003 1202310009
	Crimp range*	0,34-1,0mm <sup>2</sup> /0,75-2,5mm <sup>2</sup>	
12 Pole	KRSCG20-553 1202310010	KRSCG20-023 1202310011	KRSCG20-003 1202310012
	Crimp range*	0,34-1,0mm <sup>2</sup>	
16 Pole	KRSHG20-553 1202310013	KRSHG20-023 1202310014	KRSHG20-003 1202310015
	Crimp range*	0,34-1,0mm <sup>2</sup>	
17 Pole	KRSJG20-553 1202310016	KRSJG20-023 1202310017	KRSJG20-003 1202310018
	Crimp range*	0,34-1,0mm <sup>2</sup>	
19 Pole (16+3)	KRSLG20-553 1202310019	KRSLG20-223 1202310020	KRSLG20-003 1202310021
	Crimp range*	0,34-1,0mm <sup>2</sup> /0,56-1,0mm <sup>2</sup>	

\*Crimp range only applies to "Crimp Contacts" version



Notes:

Tolerances (unless specified): DIN ISO 2768 m

DESCRIPTION EC NO.: WEU2009-0135 DRWN.: BBRAUCH 2008/11/14 CH'KD.: --- APPR.: JKOLB 2009/03/02	QUALITY SYMBOLS ▽ = 0 ▽C = 0	GENERAL TOLERANCES (UNLESS SPECIFIED)		DIMENSION STYLE	SCALE	DESIGN UNITS	FIRST ANGLE PROJECTION
		mm	INCH	MM	---	METRIC	
1	REV	DRAFT WHERE APPLICABLE MUST REMAIN WITHIN DIMENSIONS		DRAWN BY	DATE	M23 FRONT PM RECEPT. FEM FLANGE-MOUNT 4 X DIA 3.2MM	
		see table	DATE	2008/11/14			
MATERIAL NO.				APPROVED BY	DATE	MOLEX INCORPORATED	
SIZE A3				DOCUMENT NO.	SD-120231-001	SHEET NO. 1 OF 1	
THIS DRAWING CONTAINS INFORMATION THAT IS PROPRIETARY TO MOLEX INCORPORATED AND SHOULD NOT BE USED WITHOUT WRITTEN PERMISSION							