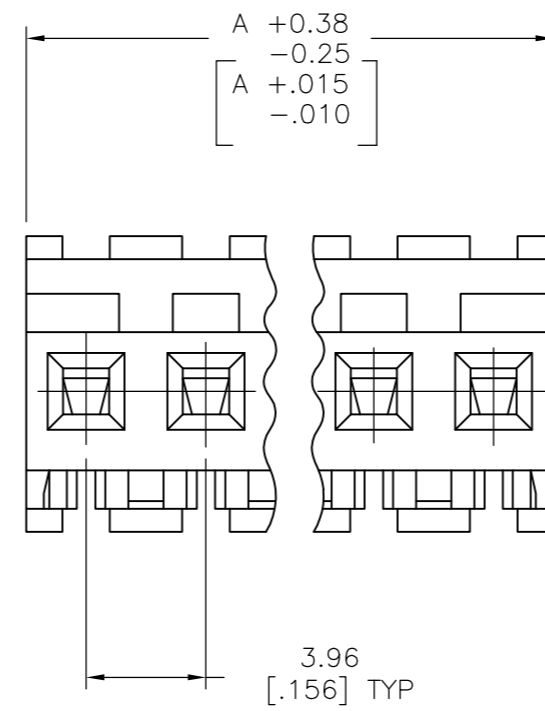
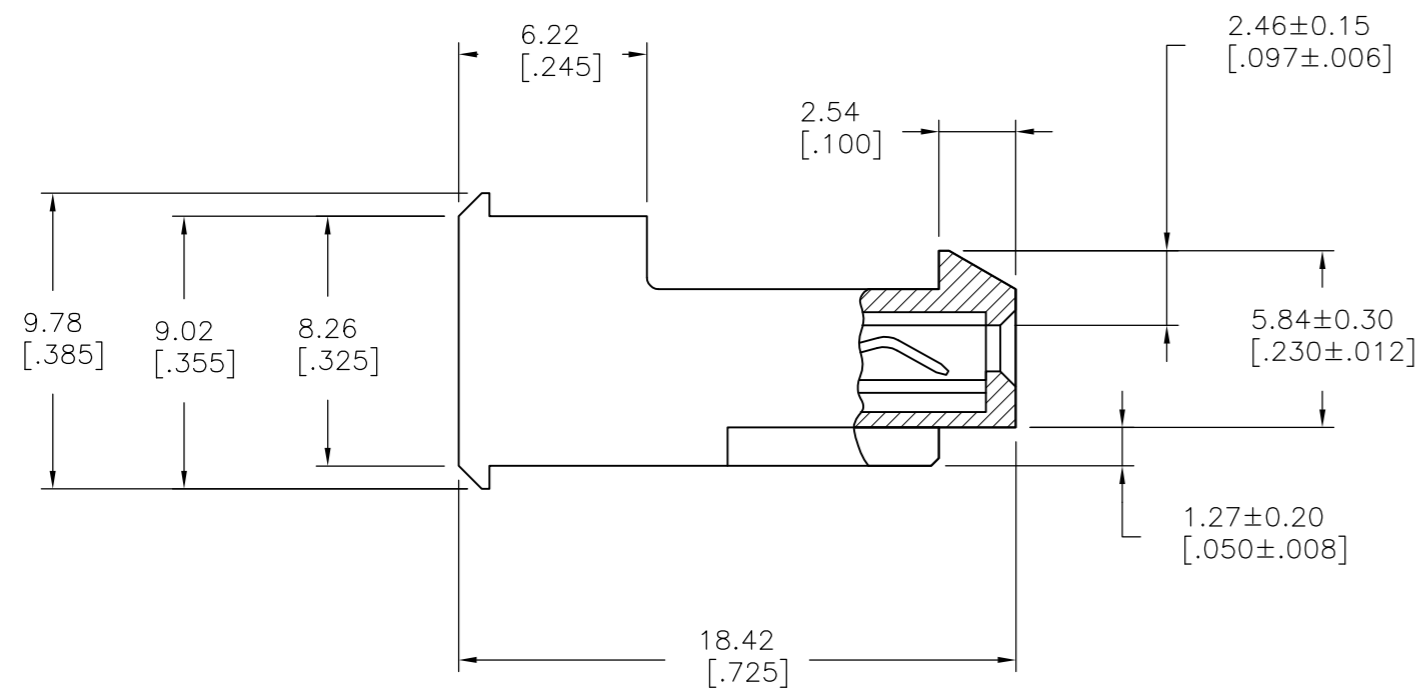
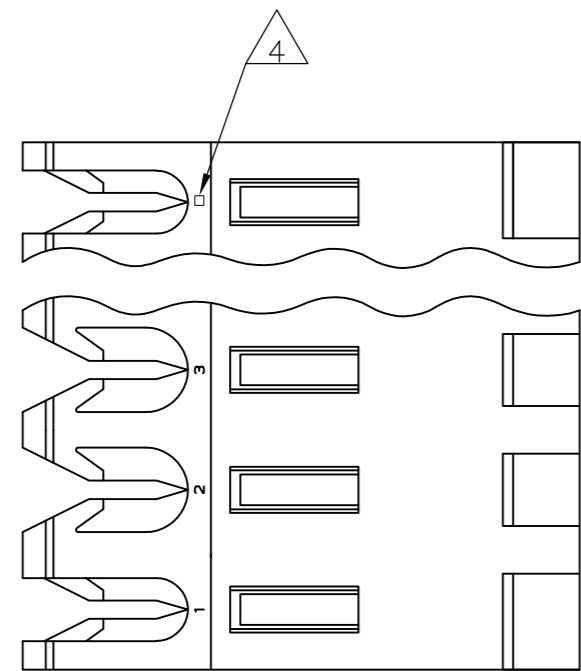


THIS DRAWING IS UNPUBLISHED. RELEASED FOR PUBLICATION  
 © COPYRIGHT - By - TE CONNECTIVITY ALL RIGHTS RESERVED.

LOC		DIST		REVISIONS			
P	LTR	DESCRIPTION		DATE	DWN	APVD	
CM	54	S		REVISED PER ECR-20-000826	29MAY2020	PC SW	



95.10 [3.744]	24	5-640595-4
91.14 [3.588]	23	5-640595-3
87.17 [3.432]	22	5-640595-2
83.21 [3.276]	21	5-640595-1
79.25 [3.120]	20	5-640595-0
75.29 [2.964]	19	4-640595-9
71.32 [2.808]	18	4-640595-8
67.36 [2.652]	17	4-640595-7
63.40 [2.496]	16	4-640595-6
59.44 [2.340]	15	4-640595-5
55.47 [2.184]	14	4-640595-4
51.51 [2.028]	13	4-640595-3
47.55 [1.872]	12	4-640595-2
43.59 [1.716]	11	4-640595-1
39.62 [1.560]	10	4-640595-0
35.66 [1.404]	9	3-640595-9
31.70 [1.248]	8	3-640595-8
27.74 [1.092]	7	3-640595-7
23.77 [.936]	6	3-640595-6
19.81 [.780]	5	3-640595-5
15.85 [.624]	4	3-640595-4
11.89 [.468]	3	3-640595-3
7.92 [.312]	2	3-640595-2
<del>95.10 [3.744]</del>	<del>24</del>	<del>2-640595-4</del>
<del>91.14 [3.588]</del>	<del>23</del>	<del>2-640595-3</del>
<del>87.17 [3.432]</del>	<del>22</del>	<del>2-640595-2</del>
<del>83.21 [3.276]</del>	<del>21</del>	<del>2-640595-1</del>
<del>79.25 [3.120]</del>	<del>20</del>	<del>2-640595-0</del>
<del>75.29 [2.964]</del>	<del>19</del>	<del>1-640595-9</del>
<del>71.32 [2.808]</del>	<del>18</del>	<del>1-640595-8</del>
<del>67.36 [2.652]</del>	<del>17</del>	<del>1-640595-7</del>
<del>63.40 [2.496]</del>	<del>16</del>	<del>1-640595-6</del>
<del>59.44 [2.340]</del>	<del>15</del>	<del>1-640595-5</del>
<del>55.47 [2.184]</del>	<del>14</del>	<del>1-640595-4</del>
<del>51.51 [2.028]</del>	<del>13</del>	<del>1-640595-3</del>
<del>47.55 [1.872]</del>	<del>12</del>	<del>1-640595-2</del>
<del>43.59 [1.716]</del>	<del>11</del>	<del>1-640595-1</del>
<del>39.62 [1.560]</del>	<del>10</del>	<del>1-640595-0</del>
<del>35.66 [1.404]</del>	<del>9</del>	<del>640595-9</del>
<del>31.70 [1.248]</del>	<del>8</del>	<del>640595-8</del>
<del>27.74 [1.092]</del>	<del>7</del>	<del>640595-7</del>
<del>23.77 [.936]</del>	<del>6</del>	<del>640595-6</del>
<del>19.81 [.780]</del>	<del>5</del>	<del>640595-5</del>
<del>15.85 [.624]</del>	<del>4</del>	<del>640595-4</del>
<del>11.89 [.468]</del>	<del>3</del>	<del>640595-3</del>
<del>7.92 [.312]</del>	<del>2</del>	<del>640595-2</del>

- △ SUPERSEDED BY 5-640595-4
- △ SUPERSEDED BY 5-640595-3
- △ SUPERSEDED BY 5-640595-2
- △ SUPERSEDED BY 5-640595-1
- △ SUPERSEDED BY 5-640595-0
- △ SUPERSEDED BY 4-640595-9
- △ SUPERSEDED BY 4-640595-8
- △ SUPERSEDED BY 4-640595-7
- △ SUPERSEDED BY 4-640595-6
- △ SUPERSEDED BY 4-640595-5
- △ SUPERSEDED BY 4-640595-4
- △ SUPERSEDED BY 4-640595-3
- △ SUPERSEDED BY 4-640595-2
- △ SUPERSEDED BY 4-640595-1
- △ SUPERSEDED BY 4-640595-0
- △ SUPERSEDED BY 3-640595-9
- △ SUPERSEDED BY 3-640595-8
- △ SUPERSEDED BY 3-640595-7
- △ SUPERSEDED BY 3-640595-6
- △ SUPERSEDED BY 3-640595-5
- △ SUPERSEDED BY 3-640595-4
- △ SUPERSEDED BY 3-640595-3

- 1 MATERIAL: CONNECTOR - NYLON UL94V-2 (BLUE).  
CONTACTS - 0.30[.012] THICK COPPER ALLOY  
(BRIGHT TIN-LEAD 0.00203[.000080] MIN. THICK FOR CONTACTS 640595-2 THRU 2-640595-4)  
(MATTE WHISKER MITIGATED TIN 0.00203[.000080] MIN THICKNESS OVER NICKEL UNDERPLATE FOR 3-640595-2 THRU 5-640595-4).
- 2 CONTACTS ACCEPT 26 AWG WIRE WITH 2.41[.095] MAX INSULATION DIAMETER.
- 3 CONTACTS MUST ACCEPT 1.14±0.03[.045±.001] SQUARE POST AND REMAIN LOCKED IN POSITION.
- 4 IDENTIFICATION NUMBER FOR LAST CIRCUIT MAY NOT APPEAR ON ALL ASSEMBLIES.
- 5 DIMENSIONS IN BRACKETS ARE IN INCHES.
- 6 HOUSING FEATURES ARE: FEED-THRU WITH LOCKING RAMP.
- 7 OBSOLETE PARTS: OBSOLETE CIS STREAMLINING PER D.RENAUD/D.SINISI

THIS DRAWING IS A CONTROLLED DOCUMENT.		DWN B. LEWIS 12FEB91		
DIMENSIONS: mm [INCHES]		CHK R. SWING 12FEB91		
TOLERANCES UNLESS OTHERWISE SPECIFIED:		APVD D. CLARK 19FEB91	NAME	
0 PLC ± -	1 PLC ± -	PRODUCT SPEC		
2 PLC ± -	3 PLC ± 0.13 [.005]	APPLICATION SPEC		
4 PLC ± -	ANGLES ± -	108-1051		
FINISH		114-1020		
MATERIAL		WEIGHT		
1		A2 00779 C=640595		
CUSTOMER DRAWING		SCALE 4:1 SHEET 1 OF 1 REV S		