

# Hybrid Motor With Batteryless Absolute Encoder

## M17PM-K



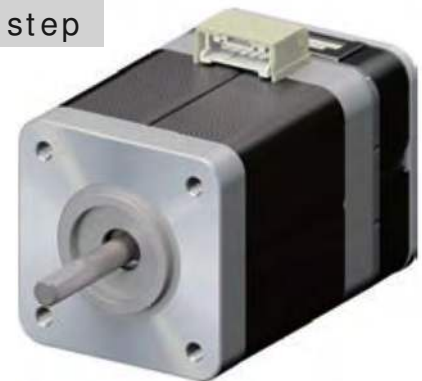
### Outline

42mm $\square$

1.8°/ step

UNIT:  $\frac{\text{mm}}{\text{inch}}$

Model	"M"	"L"
M17PMK340x	38.0(1.50)	52.0(2.05)
M17PMK440x	48.0(1.89)	62.0(2.44)
M17PMFA34x	60.0(2.36)	74.0(2.91)

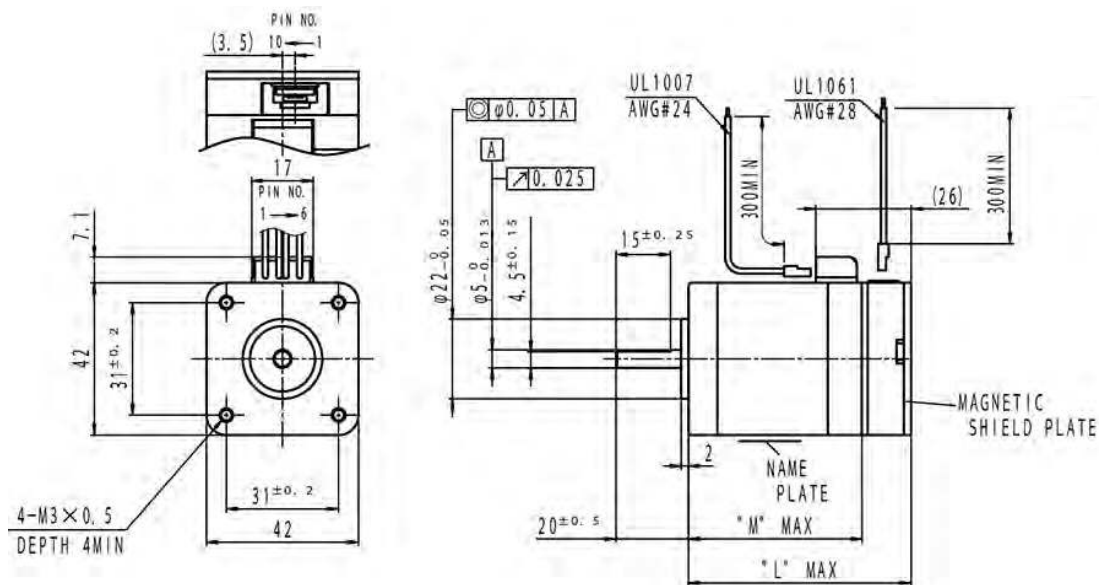


#### For Motor

PIN NO.	1	2	3	4	5	6
L/W Color	Yel	-	Red	Blu	-	Org
Phase	$\bar{A}$	-	A	B	-	$\bar{B}$

#### For Encoder

PIN NO.	1	2	3	4	5	6	7	8	9	10
L/W Color	Red	Prl	Gry	Wht	Grn	Brn	Yel	Blu	Org	Blk
Signal	Vcc	RS485-	RS485+	PA	NA	PB	NB	PZ	NZ	GND



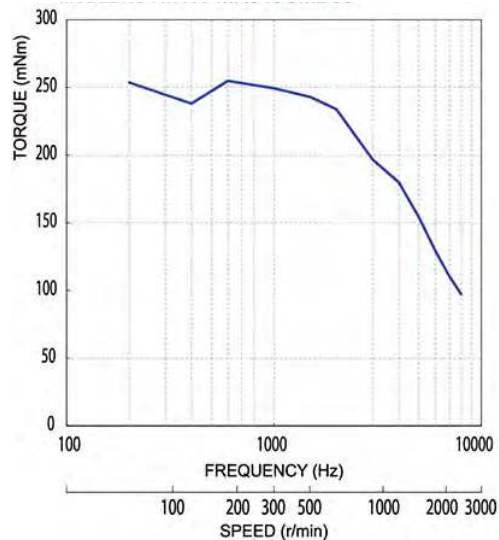
### Specifications

MODEL	Step Angle	Drive Sequence	Rated Current	Resistance	Holding Torque	Inductance	Rotor Inertia	Detent Torque	Encoder Resolution	Mass	Max. Turn Count
	(deg)										
M17PMK340CMB03	1.8	BI-POLAR	2.0	0.9	290	2.0	50	11	4000	320	1000
M17PMK440CMB03	1.8	BI-POLAR	2.0	1.2	510	2.6	75	16.7	4000	420	1000
M17PMFA34CMB03	1.8	BI-POLAR	2.6	1.0	690	1.5	162	30	4000	580	1000

## Torque / Speed Characteristics

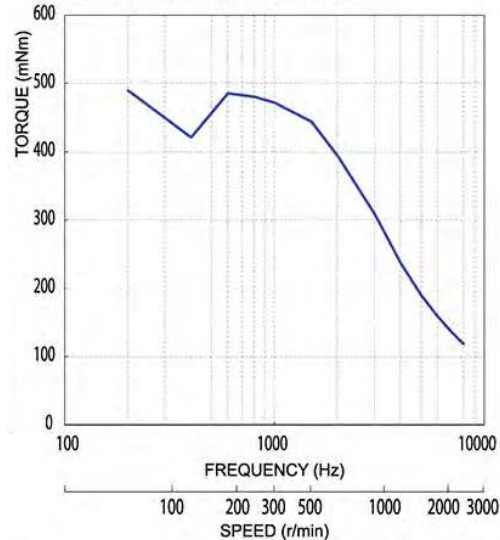
Model No: M17PMK340CMB03

Driver: Chopper Dual  
Supply Voltage: 24.0 (Volt)



Model No: M17PMK440CMB03

Driver: Chopper Dual  
Supply Voltage: 24.0 (Volt)



Model No: M17PMFA34CMB03

Driver: Chopper Dual  
Supply Voltage: 24.0 (Volt)

