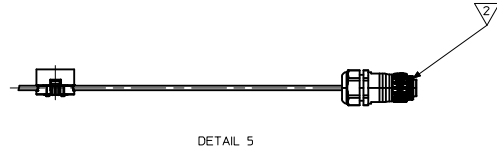
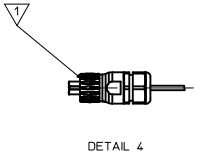
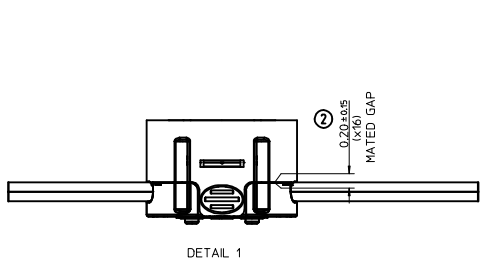
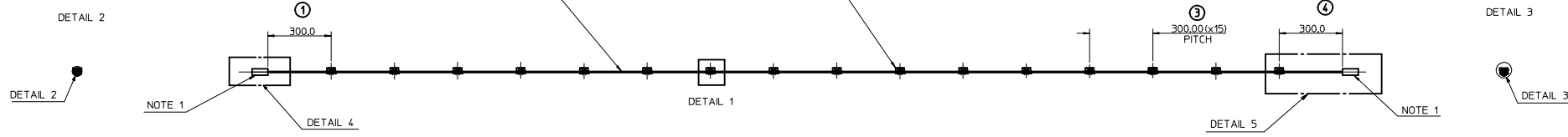
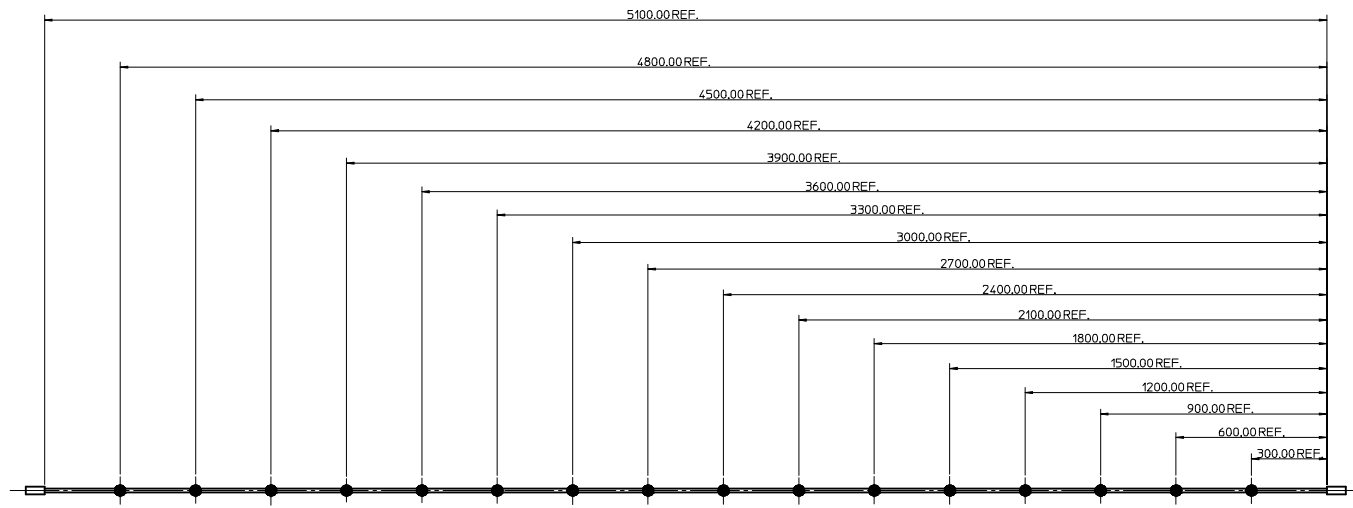
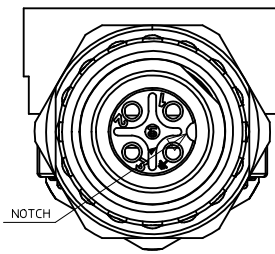
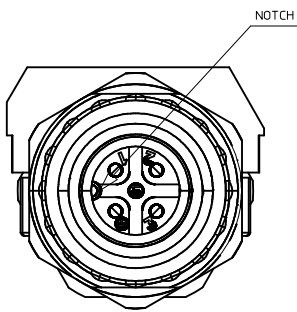


PIN	COLOUR
⊖	BLACK
1	WHITE
2	YELLOW
3	RED

PIN	COLOUR
⊖	BLACK
1	WHITE
2	YELLOW
3	RED



NOTES:  
 1. ECOMATE AMPHENOL CONNECTOR MATED TO CABLE STRING  
 FOR ECOMATE SPECIFICATION PLEASE REFER TO AMPHENOL PRODUCT SPEC  
 LAST INSPECTION NUMBER USED 4

No	COMPONENT	DESCRIPTION
▽	AMPHENOL ECOMATE CONNECTOR (FEMALE)	MATING CONNECTOR - C016 20D003 807 12
▽	AMPHENOL ECOMATE CONNECTOR (MALE)	MATING CONNECTOR - C016 20H003 807 12
▽	BARCO CABLE	CABLE SPECIFIED IN ES-93056-001
▽	CABLE CONNECTOR ASSEMBLY	CABLE CONNECTOR AS SPECIFIED IN RSD-93056-001

ORIGINAL RELEASE EC NO: E2009-001 DRAWN BY: DRWINDMAHER CHKD: 2008/11/10 APPR: EFLAN 2008/11/11	QUALITY SYMBOLS	GENERAL TOLERANCES (UNLESS SPECIFIED)		DIMENSION STYLE	SCALE	DESIGN UNITS	THIRD ANGLE PROJECTION
	▽=0	mm	INCH	MM ONLY	1:10	METRIC	☑
	▽=0	4 PLACES ± --- ± ---	3 PLACES ± 1.0 ± ---	2 PLACES ± 2.5 ± ---	1 PLACE ± 5.0 ± ---	DRAWN BY: D MAHER DATE: 3/7/2008	
	▽=0	ANGULAR ± 2 °		CHECKED BY: M SHANAHAN DATE: 3/7/2008		APPROVED BY: E FOLAN DATE: 3/7/2008	
DRAFT WHERE APPLICABLE MUST REMAIN WITHIN DIMENSIONS		MATERIAL NO. 926010458		DOCUMENT NO. RSD-92601-458		TITLE: CABLE STRING ASSEMBLY	
SIZE 1		THIS DRAWING CONTAINS INFORMATION THAT IS PROPRIETARY TO MOLEX INCORPORATED AND SHOULD NOT BE USED WITHOUT WRITTEN PERMISSION		MOLEX MOLEX INCORPORATED		SHEET NO. 1 OF 1	