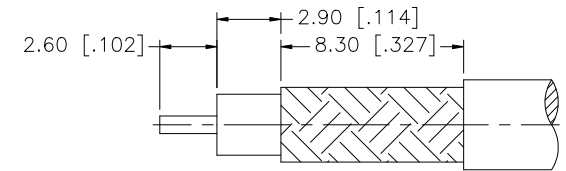
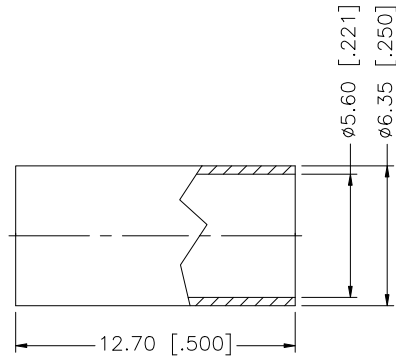
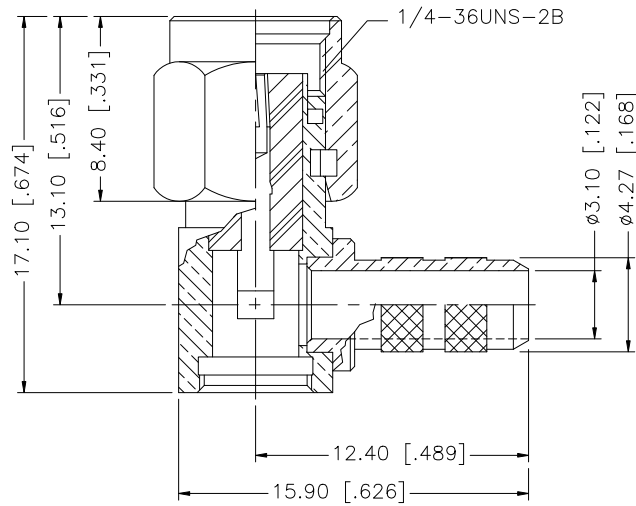
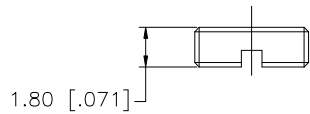


REV.	DATE	ECR NO.	DESCRIPTION
NC	01/28/99	-	INITIAL RELEASE
A	12/16/08	100064	UPDATE DRAWING FORMAT



RECOMMENDED
CABLE STRIPPING DIM'S



NOTE:

1. CRIMPED FERRULE HEX CRIMP SIZE .213" [5.41]
2. CONTACT PIN TO SOLDER.

DESCRIPTION	MATERIAL	FINISH	QTY	DO NOT SCALE DRAWING	CAD FILE	DWG. NO.	REV.	SIZE	SCALE
8 FERRULE	COPPER	GOLD	1	<small>UNLESS OTHERWISE SPECIFIED DIMENSIONS ARE IN MILLIMETERS. DIMENSIONS IN [] ARE IN INCHES AND FOR CUSTOMER REFERENCE ONLY.</small> <small>UNLESS OTHERWISE SPECIFIED TOLERANCES FOR MILLIMETERS ARE: 0.5 - 8mm ± 0.20mm 8 - 30mm ± 0.40mm 30 - 120mm ± 0.50mm</small> <small>UNLESS OTHERWISE SPECIFIED TOLERANCES FOR INCHES ARE: .020 - .315 ± 0.007" .315 - 1.180 ± 0.015" 1.180 - 4.724 ± 0.020"</small>	C:/132/132194RP.DWG	132194RP.DWG	A	A	NA
7 COVER	BRASS	GOLD	1						
6 GASKET	SILICONE	RED	1						
5 RETAINER RING	BER. COPPER	NATURAL	1						
4 CONTACT PIN	BER. COPPER	GOLD	1						
3 INSULATOR	PTFE	NATURAL	1						
2 HOUSING	BRASS	GOLD	1						
1 BODY/SHELL	BRASS	GOLD	1						
<small>APPROVALS</small> DRAWN GRS CHECKED ISSUED SHEET 1 OF 1 <small>DATE</small> 12/16/08					<h1 style="text-align: center;">Amphenol Connex</h1> <p style="text-align: center;">SMA R/A CRIMP PLUG – REVERSE POLARITY (FOR RG223/U, 400/U CABLE)</p>				
					<small>PART DESCRIPTION</small> SMA R/A CRIMP PLUG – REVERSE POLARITY (FOR RG223/U, 400/U CABLE)				
					<small>PART NO.</small> 132194RP				