

GENERAL CHARACTERISTICS AND ROHS INFORMATIONS:

See PRODUCT SPECIFICATION: GS-12-446

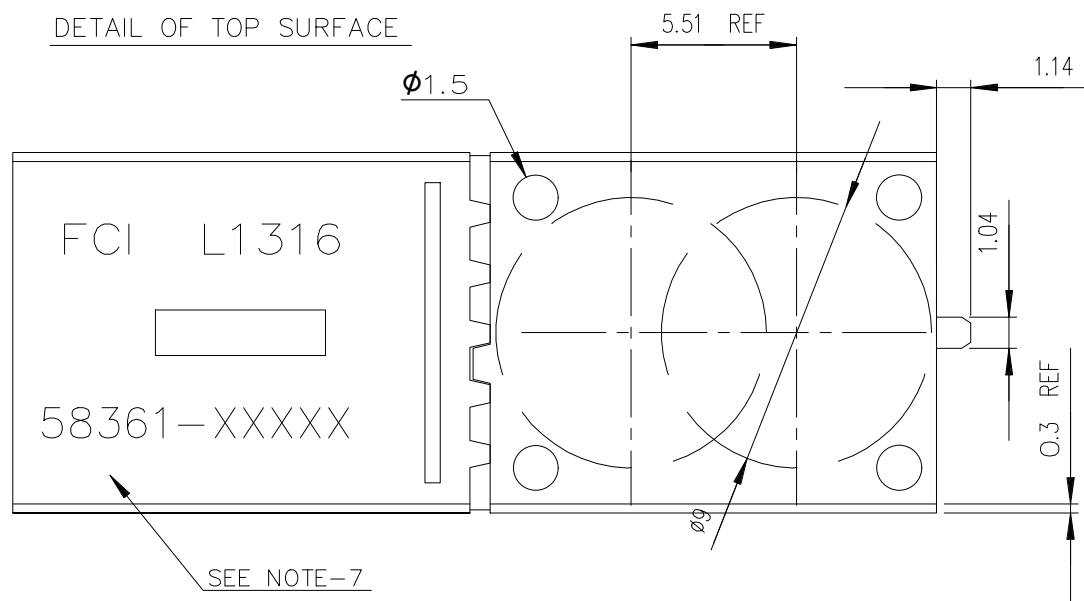
PART NUMBER : 58361-XOXLF

NOTES:

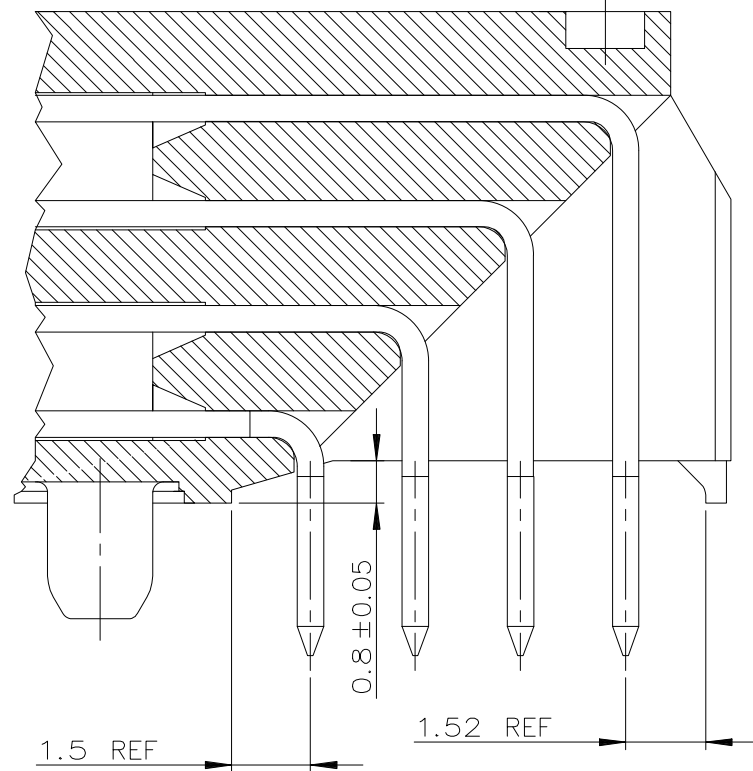
- MATERIAL : BODY : LCP UL94-V0
: CONTACT : COPPER ALLOY.
- FOR PLATING PERFORMANCE REFER DRAWING # 10159408
- SPRING PEGS WITH LOW INSERTION FORCE MAX 20 N PER MODULE RETENTION FORCE MIN 10 N PER MODULE.
- ONE CENTER PEG FOR LOCATING AND HOLD DOWN FORCES.
- USE EXISTING CABLE TO BOARD CODING KEYS.
- PLATING ON MATING PART, SEE PRODUCT SPEC: GS-12-446.
- TRUE POS CONTROL WITH GRID GAUGE $\phi 0.65$ + WEIGHT 10 N TRUE POS TOLERANCES ACCORDING TO MOUNTING RANGE ± 0.35 (X AND Y).
- VIDEO REFERENCING ON VISIBLE + ACCURATE SHARP PLASTIC EDGES.
- CENTRAL WALL WITH END REAR SUPPORT.
- A Δ SYMBOL WILL BE NEXT TO ANY DIMENSION, VIEW, OR NOTE WHICH HAS BEEN MODIFIED WITH THE CURRENT DRAWING REVISION.

| | | | | | | | | | |
|-------------|----------------|--------|----|------------|---------------------------------------|------------------|------------|-------------------------------|--|
| mat'l. code | | NOTE 1 | | surface | 58 | tolerance | projection | product family | |
| ltr | | ecn no | dr | date | ISO 1302 | ISO 406 ISO 1101 | | METRAL | |
| F | DG09-0180 | CENH | | 2009-06-07 | tolerances unless otherwise specified | | ϕ | title | |
| G | ELX-1-35934 | ARUN | | 2020-01-17 | angles | 0.X±0.3 | MM | METRAL RA HDR PIP CONVERG | |
| H | ELX-1-38655 | MINI | | 2020-09-28 | linear | 0.XX±0.13 | scale | NB 4X6- WITH OUT HDF | |
| J | ELX-1-41583 | NIRMAL | | 2021-07-14 | 0°±2° | 0.XXX±0.05 | - | dwg no | |
| | | | | | dr | CHAMPION | 2002-12-17 | sheet 1 of 4 | |
| | | | | | enr | RAHUL MOHAN M | 2021-07-14 | 58361 | |
| | | | | | chr | ALEX BABU | 2021-07-14 | A2 | |
| | | | | | appd | SANOJ | 2021-07-14 | type Product Customer Drawing | |
| sheet index | revision sheet | J | J | J | J | J | J | | |
| | | 1 | 2 | 3 | 4 | | | | |

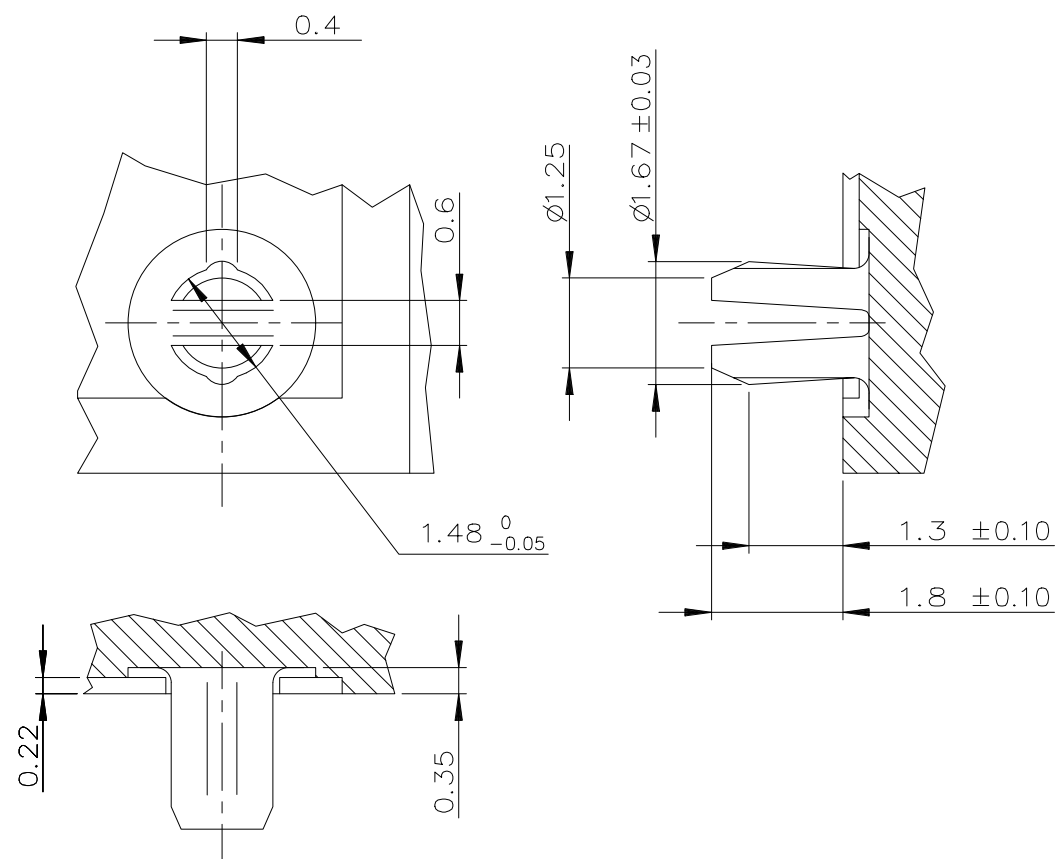
DETAIL OF TOP SURFACE



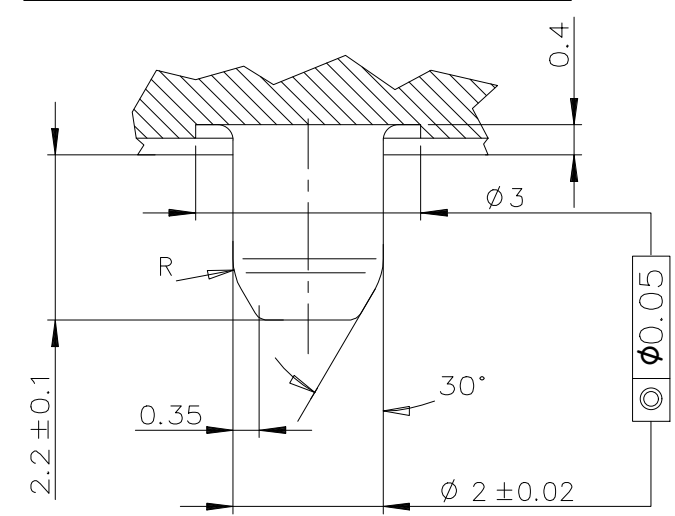
DETAIL OF STAND-OFF SCALE-7/1



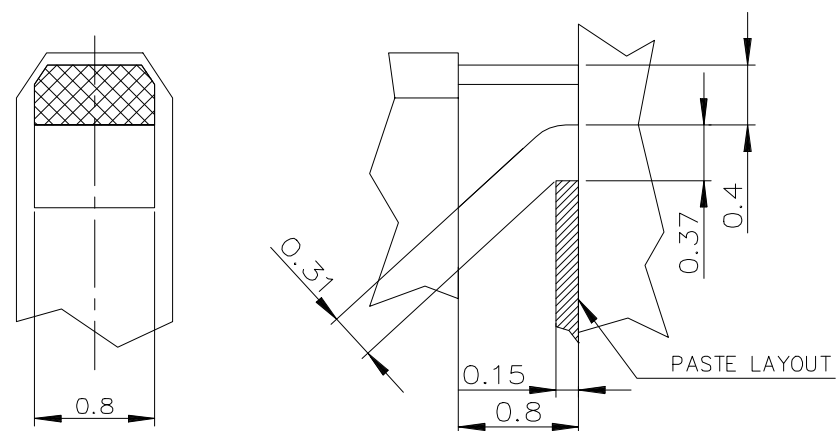
DETAIL OF RETENTION PEGS (2x) SCALE 10/1



DETAIL OF CENTRAL PEG SCALE 10/1

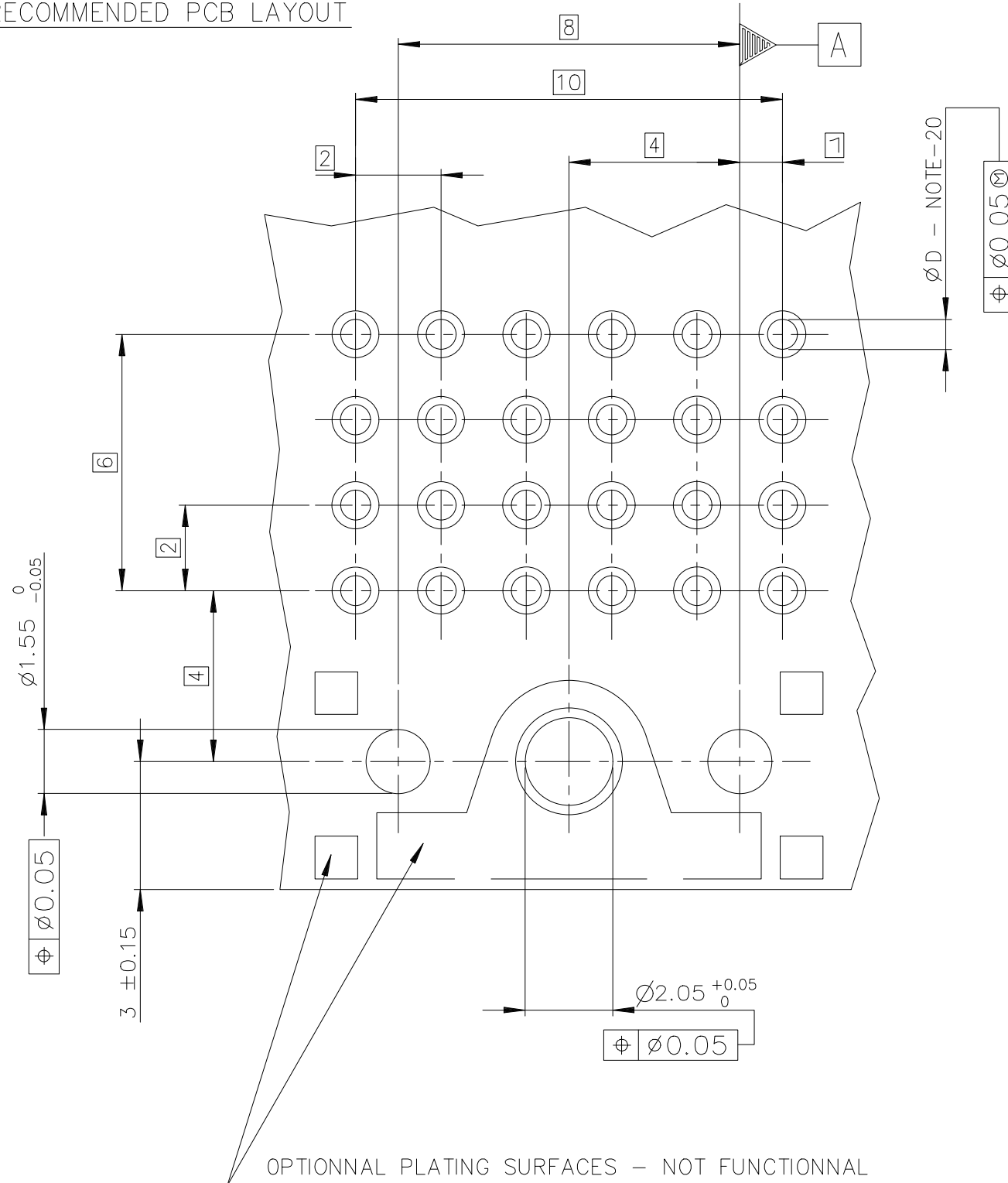


DETAIL OF REAR SUPPORT SCALE-20/1

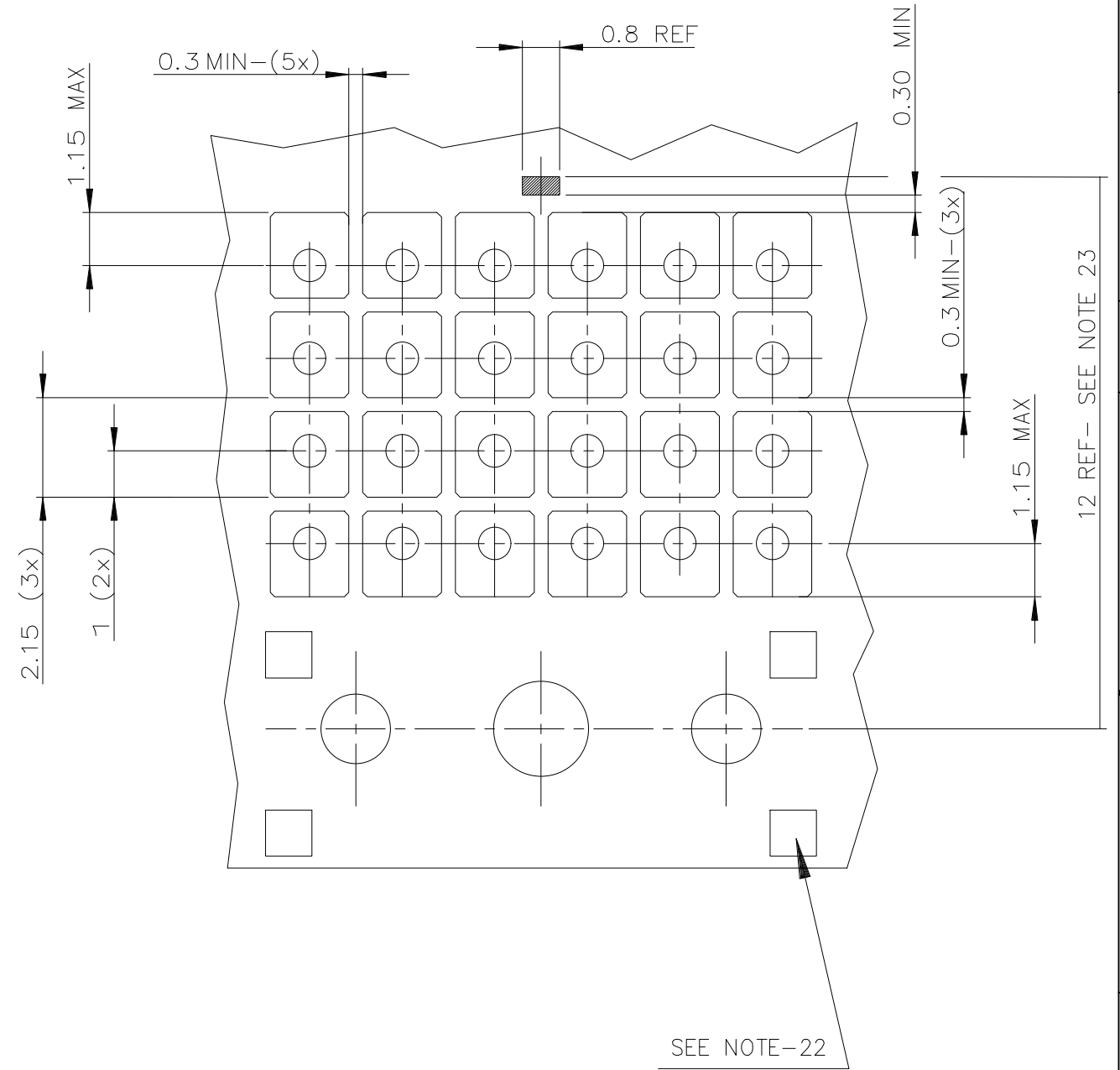


| | | | | | | | | | | | | |
|-------------|-------------|--------|------------|---------|--------|---------------------------------------|------------|------------|----------|------------|---------------------------|--------|
| mat'l. code | | NOTE 1 | | surface | 58 | tolerance | ISO 1302 | ISO 406 | ISO 1101 | projection | product family | METRAL |
| ltr | ecn no | dr | date | angles | linear | tolerances unless otherwise specified | | 0.X±0.3 | | MM | title | |
| F | DG09-0180 | CENH | 2009-06-07 | | | | | 0.XX±0.13 | | | METRAL RA HDR PIP CONVERG | |
| G | ELX-I-35934 | ARUN | 2020-01-17 | | | | | 0.XXX±0.05 | | scale | NB 4X6- WITH OUT HDF | |
| H | ELX-I-38653 | MINI | 2020-09-28 | 0°±2° | | | | | | | dwg no | |
| J | ELX-I-41583 | NIRMAL | 2021-07-14 | | dr | CHAMPION | 2002-12-17 | | | | sheet 2 of 4 | |
| | | | | | enr | RAHUL MOHAN M | 2021-07-14 | | | | size | |
| | | | | | chr | ALEX BABU | 2021-07-14 | | | | A2 | |
| | | | | | appd | SANOJ | 2021-07-14 | | | | type | |
| sheet index | revision | J | J | J | J | | | | | | Product Customer Drawing | |
| | sheet | 1 | 2 | 3 | 4 | | | | | | | |

RECOMMENDED PCB LAYOUT



RECOMMENDED STENCIL LAYOUT



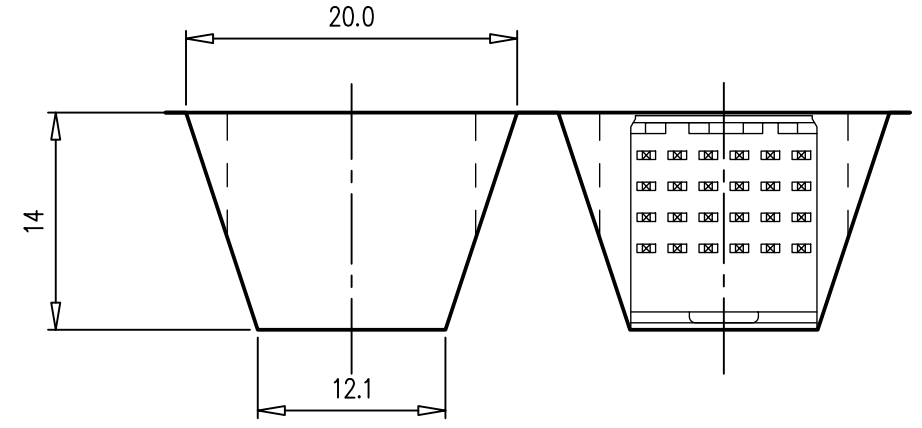
NOTE

- 20. PTH DIMENSIONS - ϕD
REFER DRAWING NO: # 58351 \triangle
- 21. 4 SQUARE REFERENCE PADS
- 22. NO PASTE ALLOWED ON 4 REFERENCE PADS
- 23. PRODUCT REAR SUPPORT LOCATION
- 24. RECOMMENDED PASTE THICKNESS = 0.15

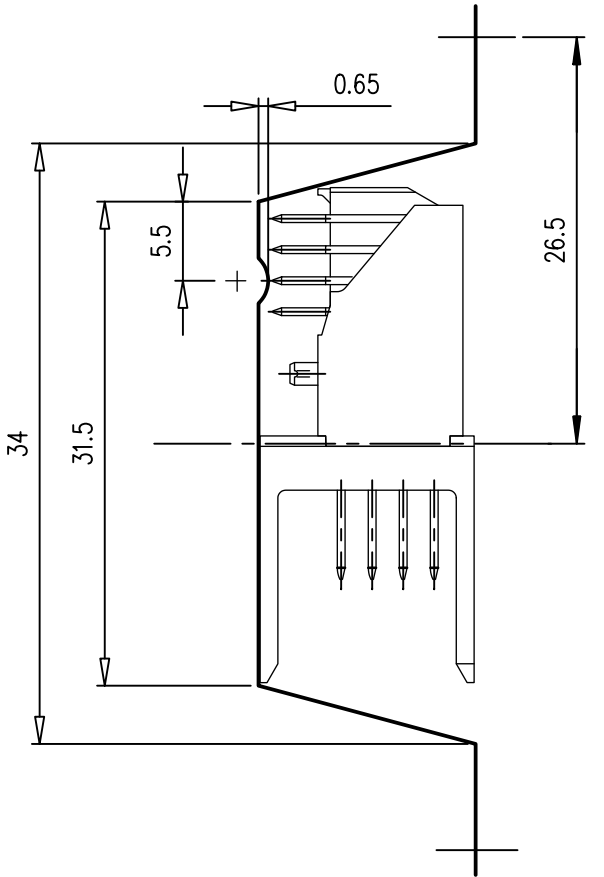
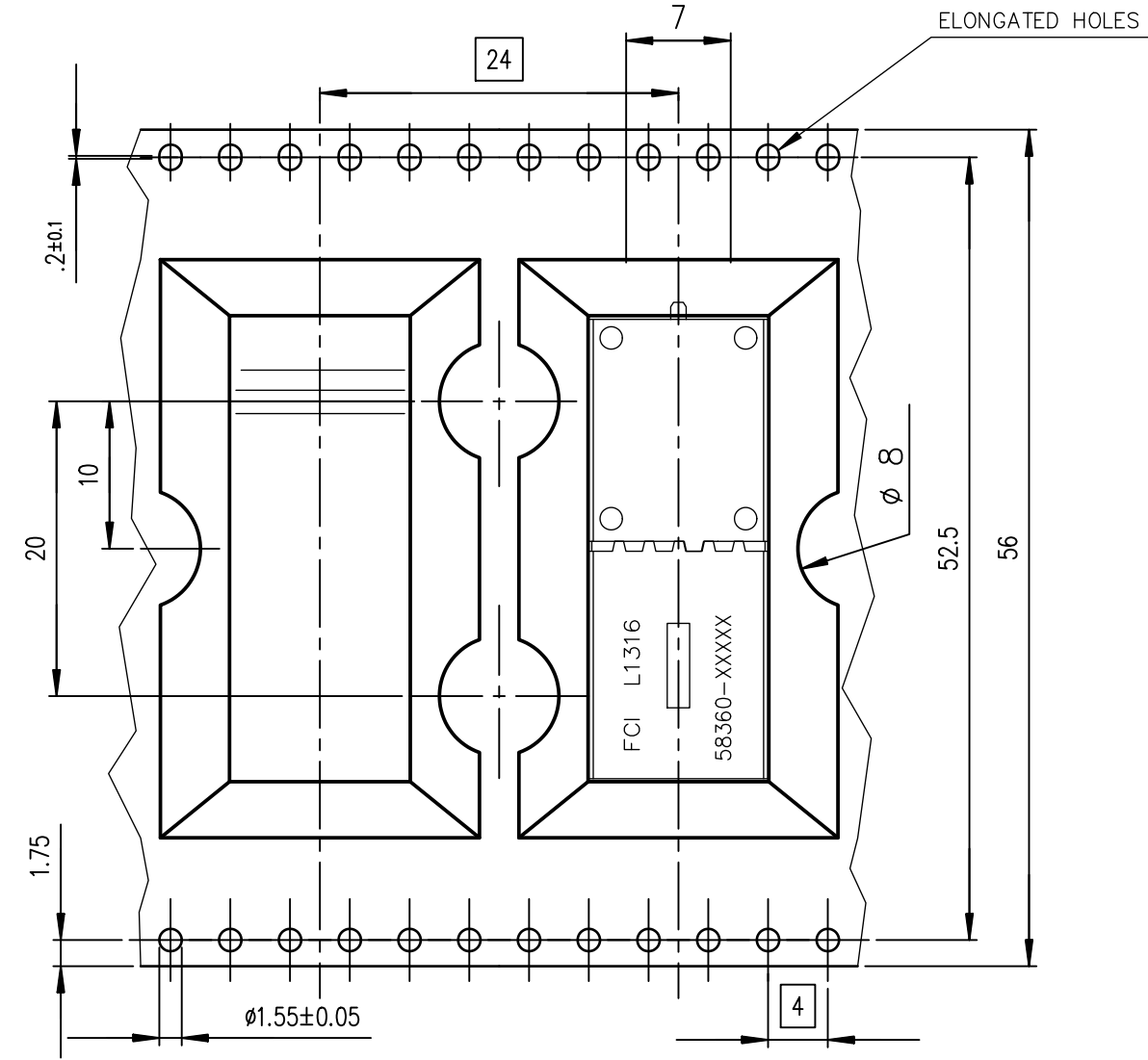
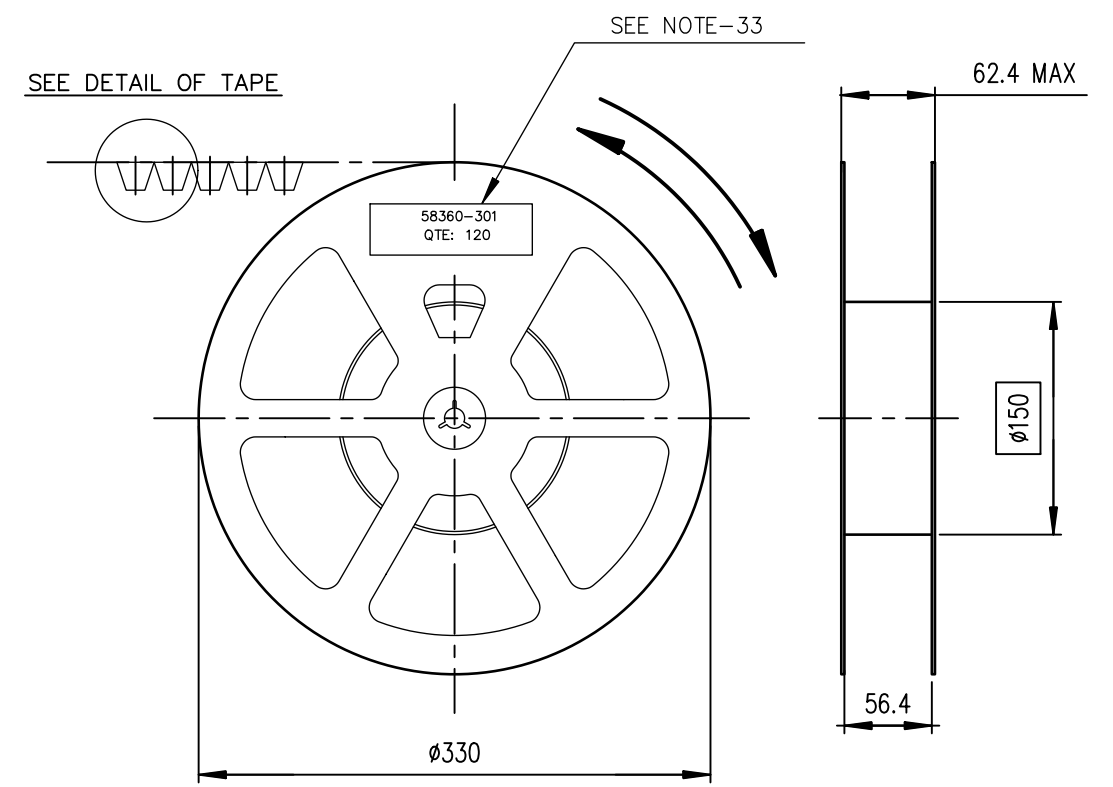
| | | | | | | | | | | | | |
|-------------|----------------|--------|------------|---------------------------------|--------|---------------------------------------|------------|------------------|----------|------------|---------------------------|--------------------------|
| mat'l. code | | NOTE 1 | | surface | 58 | tolerance | ISO 1302 | ISO 406 | ISO 1101 | projection | product family | METRAL |
| ltr | ecn no | dr | date | angles | linear | tolerances unless otherwise specified | | 0.X \pm 0.3 | | MM | title | |
| F | DG09-0180 | CENH | 2009-06-07 | | | | | 0.XX \pm 0.13 | | | METRAL RA HDR PIP CONVERG | |
| G | ELX-1-35934 | ARUN | 2020-01-17 | | | | | 0.XXX \pm 0.05 | | | NB 4X6- WITH OUT HDF | |
| H | ELX-1-38655 | MINI | 2020-09-28 | 0 $^{\circ}$ \pm 2 $^{\circ}$ | | | | | | scale | dwg no | sheet 3 of 4 |
| J | ELX-1-41583 | NIRMAL | 2021-07-14 | | dr | CHAMPION | 2002-12-17 | | | | 58361 | A2 |
| | | | | | enr | RAHUL MOHAN M | 2021-07-14 | | | | | |
| | | | | | chr | ALEX BABU | 2021-07-14 | | | | | |
| | | | | | appd | SANOJ | 2021-07-14 | | | | | |
| sheet index | revision sheet | J | J | J | J | | | | | | type | Product Customer Drawing |
| | | 1 | 2 | 3 | 4 | | | | | | | |

PACKAGING SPECIFICATION

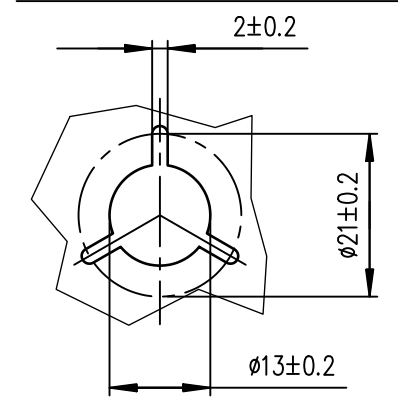
DETAIL OF TAPE SCALE 2/1



DETAIL OF REEL SCALE 1/5



DETAIL OF REEL HUB SCALE 1/1



- NOTE-30: REF SPECIFICATION: EIA-481-B
- NOTE-31: TAPE MATERIAL: PVC ANTISTATIC
SURFACE RESISTIVITY MAX 10^{12} OHMS/SQUARE AFTER HEAT FORMING
CARRIER P/N: 10097632-002 COVER TAPE P/N:10097632-003
- NOTE-32: PACKAGING QTY: PACKAGING MATERIAL DETAIL INFORMATION PLEASE REFER TO DRAWING OF 10097632
- QTY PER REEL(P/N:10097632-001) = 120 PCS
- QTY PER BOX (P/N:100970632-004) = 6 REELS = 720 PCS
- NOTE-33: LABEL FOR IDENTIFICATION: PART NUMBER,DATE-CODE,TRACABILITY INFORMATIONS
- NOTE-34: RECYCLABLE MATERIAL FOR REEL + ANTISTATIC TREATMENT
- NOTE-35: TUBE PACKAGING: 48PCS CONNECTOR PER TUBE AND 384 PCS CONNECTOR PER CARTON

OTHERS INFORMATIONS,SEE DRW 58360 SHEET1/2/3

| | | | | | | | | | | | | |
|-------------|-------------|--------|------------|---------------------------------------|---------------|------------|----------|---------|----------|------------|----------------------|---------------------------|
| mat'l. code | | NOTE 1 | | surface | 58 | tolerance | ISO 1302 | ISO 406 | ISO 1101 | projection | product family | METRAL |
| ltr | ecn no | dr | date | tolerances unless otherwise specified | | | | | | MM | title | METRAL RA HDR PIP CONVERG |
| F | DG09-0180 | CENH | 2009-06-07 | angles | linear | 0.X±0.3 | | | | | NB 4X6- WITH OUT HDF | |
| G | ELX-I-35934 | ARUN | 2020-01-17 | | | 0.XX±0.13 | | | | | | |
| H | ELX-I-38655 | MINI | 2020-09-28 | 0°±2° | | 0.XXX±0.05 | | | | scale | dwg no | sheet 4 of 4 |
| J | ELX-I-41583 | NIRMAL | 2021-07-14 | dr | CHAMPION | 2002-12-17 | | | | | 58361 | A2 |
| | | | | enrg | RAHUL MOHAN M | 2021-07-14 | | | | | type | Product Customer |
| | | | | chr | ALEX BABU | 2021-07-14 | | | | | Drawing | |
| | | | | appd | SANOJ | 2021-07-14 | | | | | | |
| sheet index | revision | J | J | J | J | J | J | J | J | | | |
| | sheet | 1 | 2 | 3 | 4 | | | | | | | |