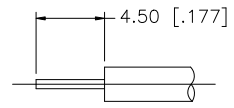
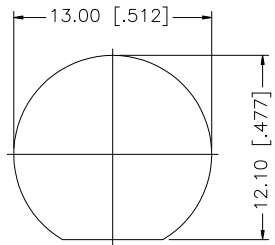
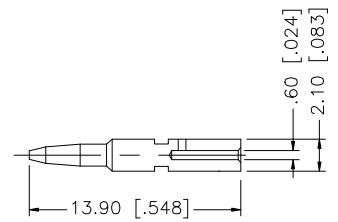
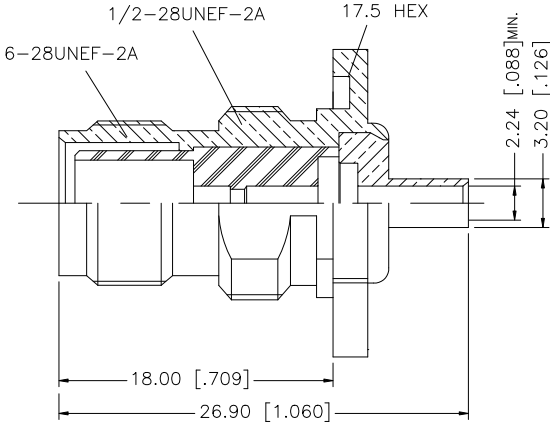
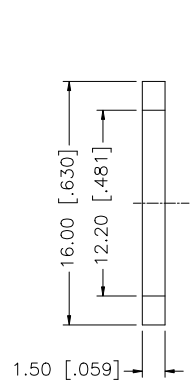
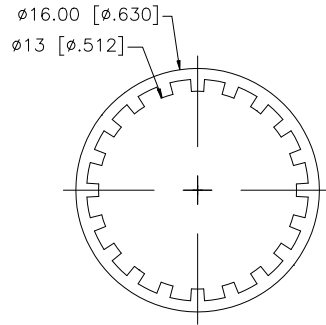
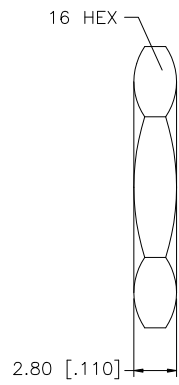


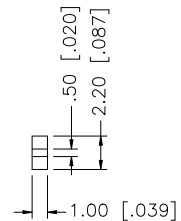
REV.	DATE	ECR NO.	DESCRIPTION
NC	03/24/09	-	INITIAL RELEASE



RECOMMENDED  
CABLE STRIPPING DIM'S



RECOMMENDED  
MOUNTING HOLE



NOTE:

1. CRIMPED CONTACT PIN HEX CRIMP SIZE .068" [1.73]
2. MAX. PANEL THICKNESS= 3.5mm

QTY	DESCRIPTION	MATERIAL	FINISH
8	HEX NUT	BRASS	NICKEL
7	LOCK WASHER	BRASS	NICKEL
6	GASKET	RUBBER	RED
5	INSULATOR	PTFE	NATURAL
4	CONTACT PIN	BRASS	GOLD
3	INSULATOR	PTFE	NATURAL
2	BARREL	BRASS	NICKEL
1	BODY	BRASS	NICKEL

UNLESS OTHERWISE SPECIFIED DIMENSIONS ARE IN MILLIMETERS. DIMENSIONS IN [ ] ARE IN INCHES AND FOR CUSTOMER REFERENCE ONLY.

UNLESS OTHERWISE SPECIFIED TOLERANCES FOR MILLIMETERS ARE:  
0.5 - 8mm ± 0.20mm  
8 - 30mm ± 0.40mm  
30 - 120mm ± 0.50mm

UNLESS OTHERWISE SPECIFIED TOLERANCES FOR INCHES ARE:  
.020 - .315 = ± 0.007"  
.315 - 1.180 = ± 0.015"  
1.180 - 4.724 = ± 0.020"

DO NOT SCALE DRAWING

APPROVALS	DATE
DRAWN GRS	03/24/09
CHECKED	
ISSUED	
SHEET 1 OF 1	
CAD FILE	C:/122/122400RP-10.DWG

**Amphenol Connex**

PART DESCRIPTION  
**TNC REVERSE POLARITY BULKHEAD  
DIRECT SOLDER JACK (FOR .085", .086" CABLE)**

PART NO.  
**122400RP-10**

DWG. NO.	122400RP-10.DWG	REV.	NC	SIZE	A	SCALE	NA
----------	-----------------	------	----	------	---	-------	----