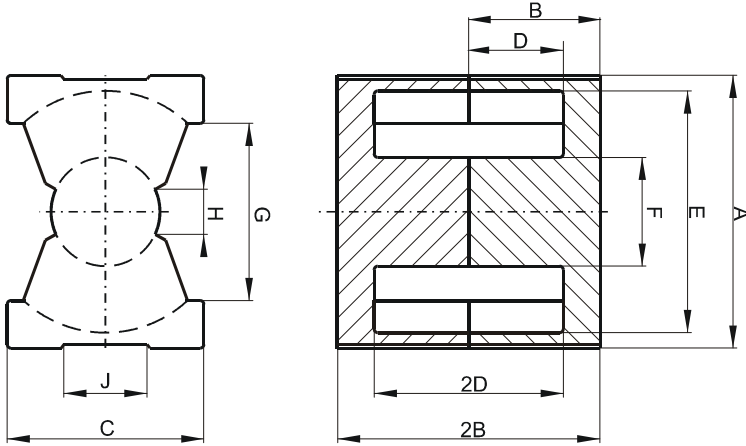


Specification for:

**0P43230UG**

110 Delta Drive  
Pittsburgh, PA 15238  
Phone: 412/696-1333  
Fax: 412/696-0333  
Email: magnetics@spang.com

**DIMENSIONS**



(mm)	Nominal:	Tol. min.:	Tol. max.:
<b>A</b>	33.0	-0.5	+ 0.5
<b>B</b>	15.15	-0.13	+ 0.13
<b>2B</b>	30.3	-0.25	+ 0.25
<b>C</b>	22.0	-0.5	+ 0.5
<b>D</b>	10.65	-0.15	+ 0.15
<b>2D</b>	21.3	-0.3	+ 0.3
<b>E</b>	27.5	-0.5	+ 0.5
<b>F</b>	13.5	-0.25	+ 0.25
<b>G</b>	19.0 Min.		
<b>H</b>	5.5 Min.		
<b>J</b>	11.6 Min.		
<b>Eff. Parameters</b>			
<b>Ae mm<sup>2</sup></b>	<b>Amin mm<sup>2</sup></b>	<b>le mm</b>	<b>Ve mm<sup>3</sup></b>
167.0	142.0	74.7	12500

**INDUCTANCE**

AL value (nH)	Test conditions
Nom: 5080 Min.: 3810	10 kHz, < 0.5 mT, 25 °C

**MARKING**

0P43230UG PXXXXX
---------------------

**CORE LOSSES**

P <sub>i</sub> max	Test conditions
128 mW/cm <sup>3</sup> (1.6 W/set)	100 kHz, 100 mT, 100 °C

**NOTE**

Spec. modifications	Previous	Revised
2005-06-22	2B=30.07 Min. F=13.72 Max. Losses: General P material	2B=30.05 Min. F=13.75 Max. Losses: Detail as indicated