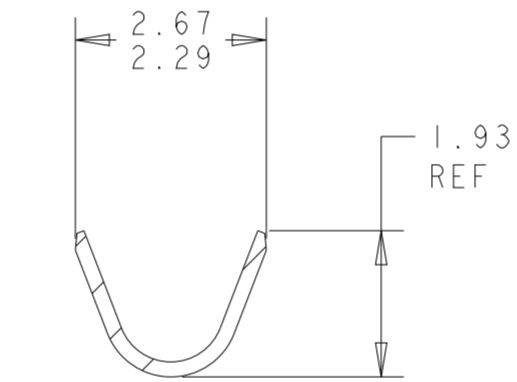
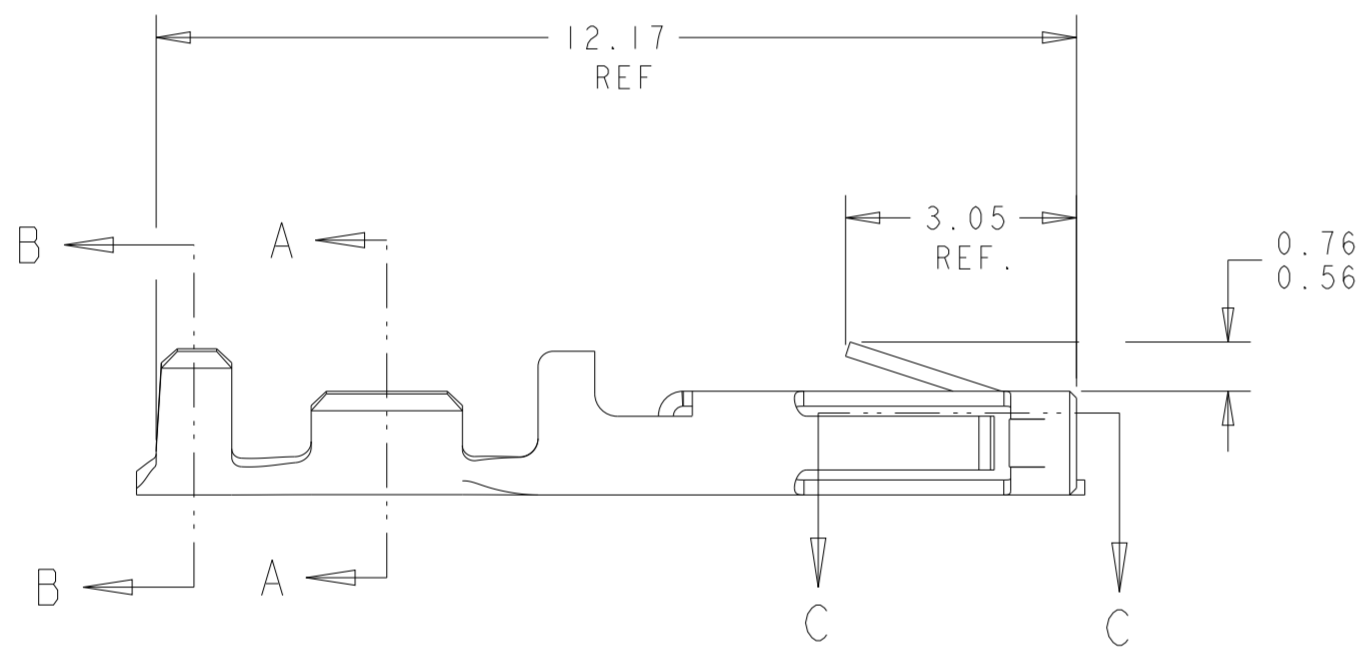
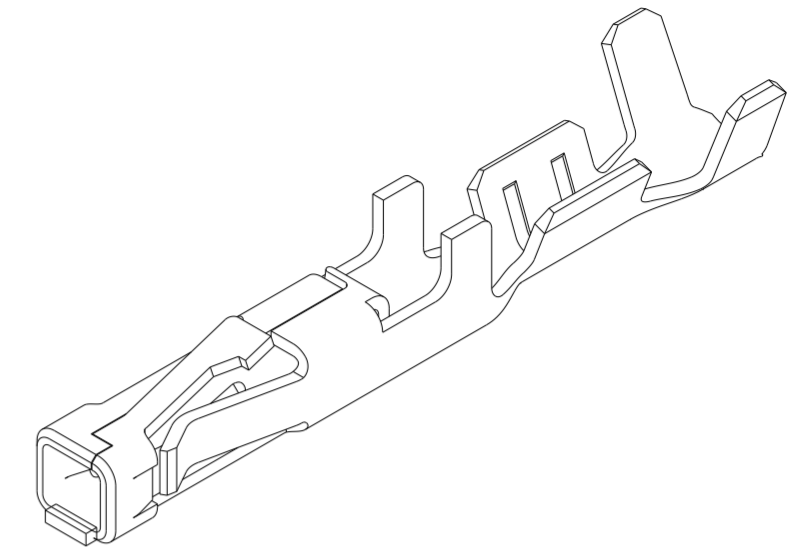
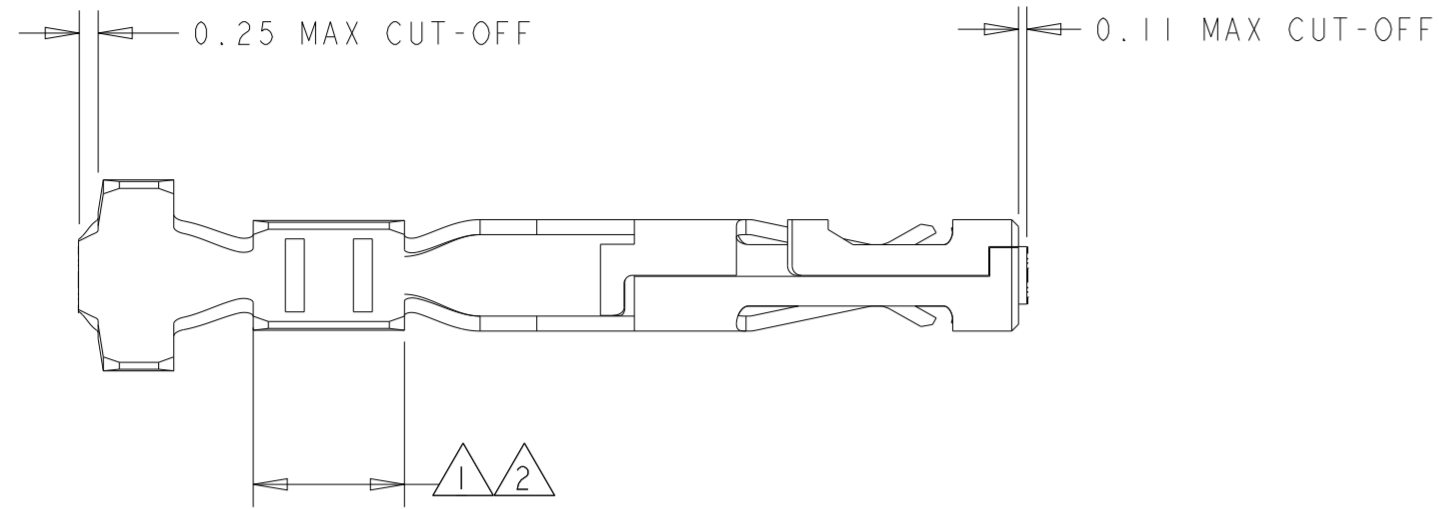
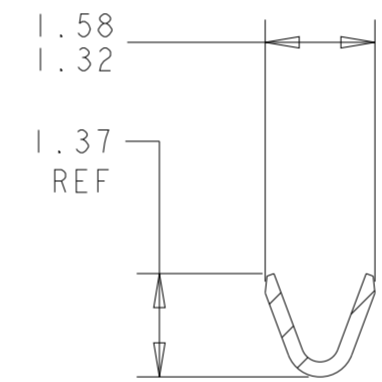


THIS DRAWING IS UNPUBLISHED. RELEASED FOR PUBLICATION
 © COPYRIGHT 20 BY - ALL RIGHTS RESERVED.

| LOC | DIST | REVISIONS | | | | | |
|-----|------|-----------|-----|---------------------------|-----------|-----|------|
| CM | 53 | P | LTR | DESCRIPTION | DATE | DWN | APVD |
| | | D1 | | REVISED PER ECO-11-005027 | 16MAR2011 | RK | HMR |
| | | D2 | | REVISED PER ECR-18-006831 | 12JUN2018 | JB | DZ |
| | | D3 | | ECO-19-006909 | 03MAY2019 | AP | WS |
| | | D4 | | REVISED PER ECN-22-186748 | 06DEC2022 | WLS | VS |

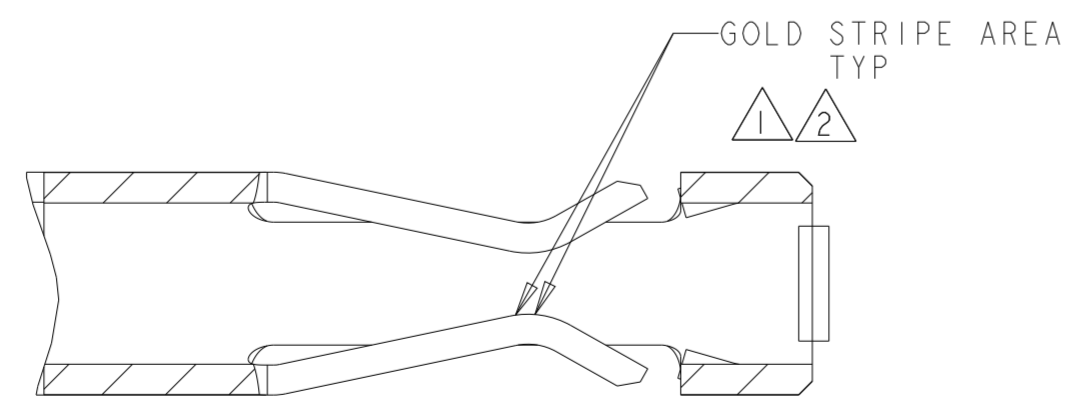


SECTION B-B



SECTION A-A

- 1 0.000762 THK GOLD STRIPE IN THE GOLD PLATE AREA, BRIGHT TIN IN THE CRIMP AREA, OVER NICKEL PLATE.
- 2 0.000381 THK GOLD STRIPE IN THE GOLD PLATE AREA, BRIGHT TIN IN THE CRIMP AREA, OVER NICKEL PLATE.
- 3 0.0015 - 0.0040 THK BRIGHT TIN.
- 4 WIRE RANGE: 26 - 30 AWG.
- 5 INSULATION RANGE 0.89 - 1.524.
- 7 0.000762 THK GOLD STRIPE IN THE GOLD PLATE AREA, BRIGHT TIN-LEAD IN THE CRIMP AREA, OVER NICKEL PLATE.
- 8 0.000381 THK GOLD STRIPE IN THE GOLD PLATE AREA, BRIGHT TIN-LEAD IN THE CRIMP AREA, OVER NICKEL PLATE.



SECTION C-C
SCALE 20:1

| | | |
|---------------|--------|-------------|
| | 1 | 1-794611-2 |
| | 2 | 1-794611-1 |
| SUPERSEDED BY | 1 | 794611-3 |
| SUPERSEDED BY | 8 | 794611-2 |
| | 3 | 794611-1 |
| REMARKS | FINISH | PART NUMBER |

| DIMENSIONS: | | TOLERANCES UNLESS OTHERWISE SPECIFIED: | | DWN | | CHK | | APVD | | NAME | |
|-------------|--|--|--------|-------------|--|------------------|--|-------------|--|--|--|
| mm | | 0 PLC | ± | K. WHITAKER | | K. COBLE | | K. COBLE | | K. COBLE | |
| | | 1 PLC | ± | 19-OCT-1999 | | 19-OCT-1999 | | 19-OCT-1999 | | 19-OCT-1999 | |
| | | 2 PLC | ±0.13 | | | | | | | TE Connectivity | |
| | | 3 PLC | ± | | | | | | | CONTACT, RECEPTACLE, CRIMP SNAP-IN, MICRO MATE-N-LOK(TM) | |
| | | 4 PLC | ± | | | | | | | SIZE CAGE CODE DRAWING NO | |
| | | ANGLES | ±0.30° | | | | | | | A200779 C-794611 | |
| | | FINISH | | | | | | | | RESTRICTED TO | |
| MATERIAL | | SEE TABLE | | 0.2 PH BRZ | | CUSTOMER DRAWING | | SCALE 10:1 | | SHEET 1 OF 1 REV D4 | |