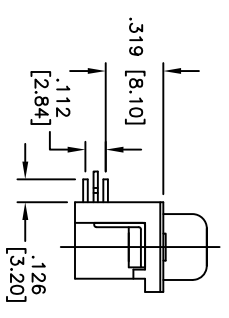
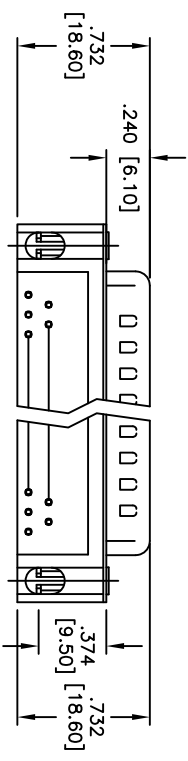
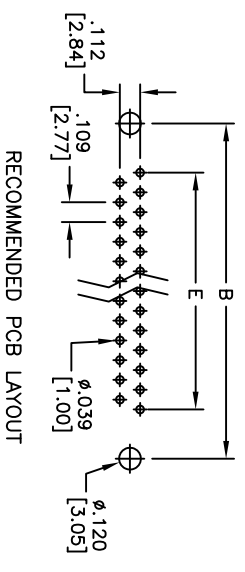
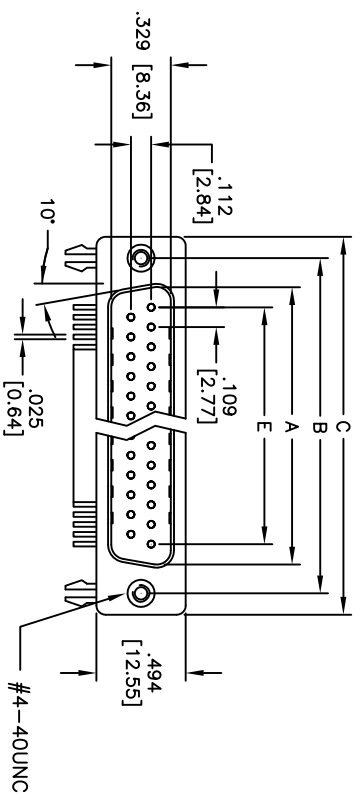


APPROVED: _____
 DATE: _____ TITLE: _____

Rev	AWO #	Description	Date	Appr
-		RELEASED	4/18/05	
A		REDRAWN	4/9/12	



DXXX	NO. OF CONTACTS	DIMENSIONS				
		A	B	C	E	
DE09	9	.666 [16.92]	.984 [24.99]	1.213 [30.81]	.436 [11.08]	
DA15	15	.994 [25.25]	1.311 [33.30]	1.543 [39.20]	.763 [19.39]	
DB25	25	1.573 [38.96]	1.852 [47.04]	2.089 [53.05]	1.309 [33.24]	
DC37	37	2.182 [55.42]	2.500 [63.50]	2.732 [69.40]	1.963 [49.86]	

SPECIFICATIONS:
 Material: Insulator: PBT, glass reinforced, rated UL 94V-0
 Insulator color: Black
 Contacts: Copper Alloy
 Shell: Steel, Tin plated.
 Clinch Nut: Copper Alloy, Nickel plated
 Boardlock: Brass, Tin plated
 Plating: Gold flash over Nickel underplate overall
 Electrical: Operating voltage: 250 VAC max
 Current rating: 3 Amps max
 Contact resistance: 20 mohms max
 Insulation resistance: 1,000 Mohms min
 Dielectric withstanding voltage: 1,000 VAC for 1 minute
 Temperature Rating: Operating temperature: -55°C to +105°C
 Environmental: Lead free, RoHS compliant

ADAM TECH
 909 Railway Avenue, Union, NJ 07083
 Phone: 908-687-5000 Fax: 908-687-5710

TITLE: **.318 [8.08] FOOTPRINT D-SUB PLUG FORKED BOARDLOCKS, #4-40 INSERTS**

UNLESS OTHERWISE SPECIFIED ALL DIMENSIONS ARE INCHES [MM]		TOLERANCES: EXCEPT AS NOTED INCHES HOLES	
.X	±.10	ØXX	±.10
.XX	±.020	ØXXX	±.015
.XXX	±.015	ØXXXX	±.010
APPROVALS		DATE	
DRAWN	SS	4/18/05	
CHECKED			
APPROVED			
SIZE	PART NO.	TITLE	
X	DXXX-PL-24	.318 [8.08] FOOTPRINT D-SUB PLUG FORKED BOARDLOCKS, #4-40 INSERTS	
REF:	S00087T	SCALE:	NTS
SHEET	1	OF	1



6 5 4 3 2 1