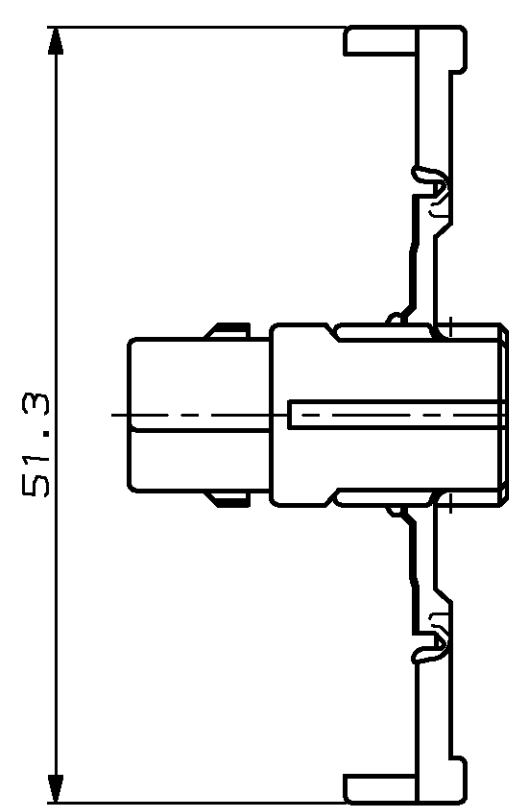
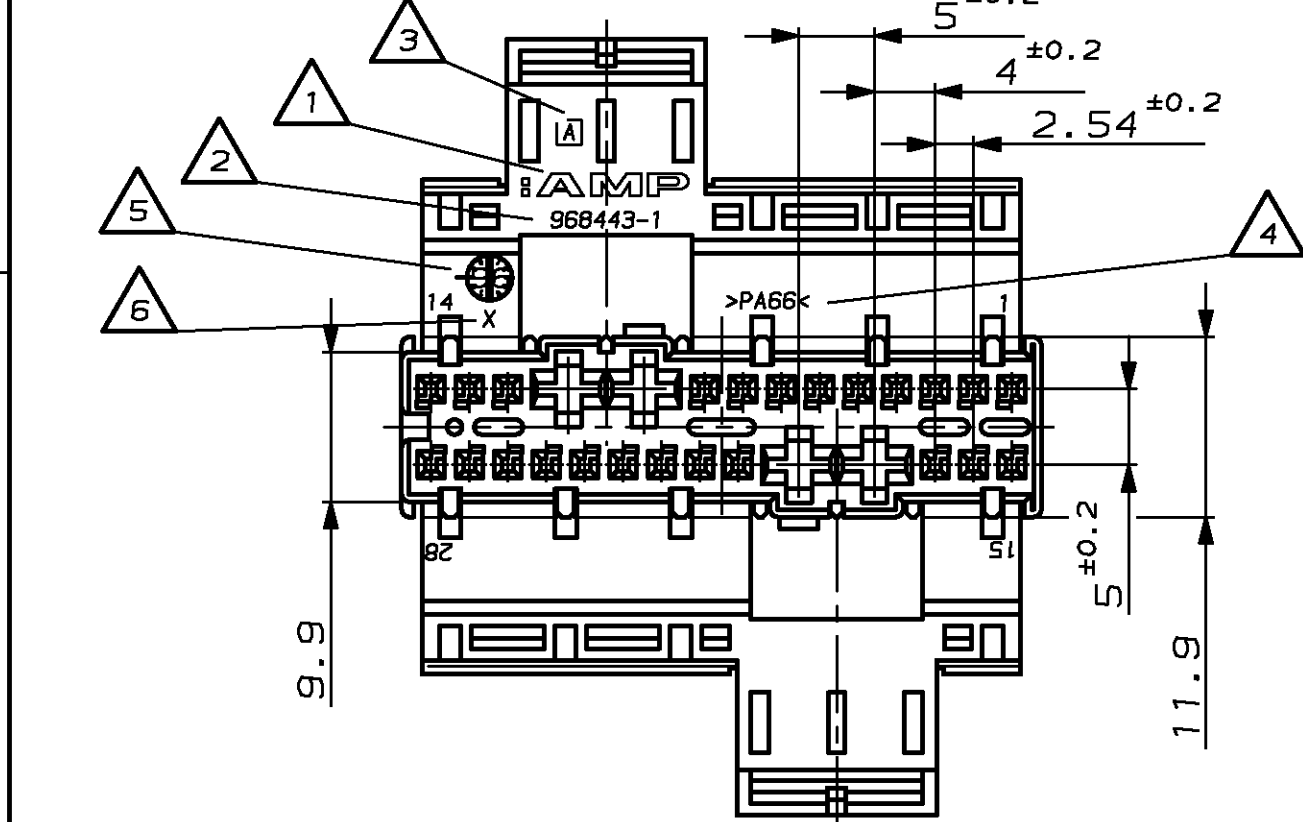
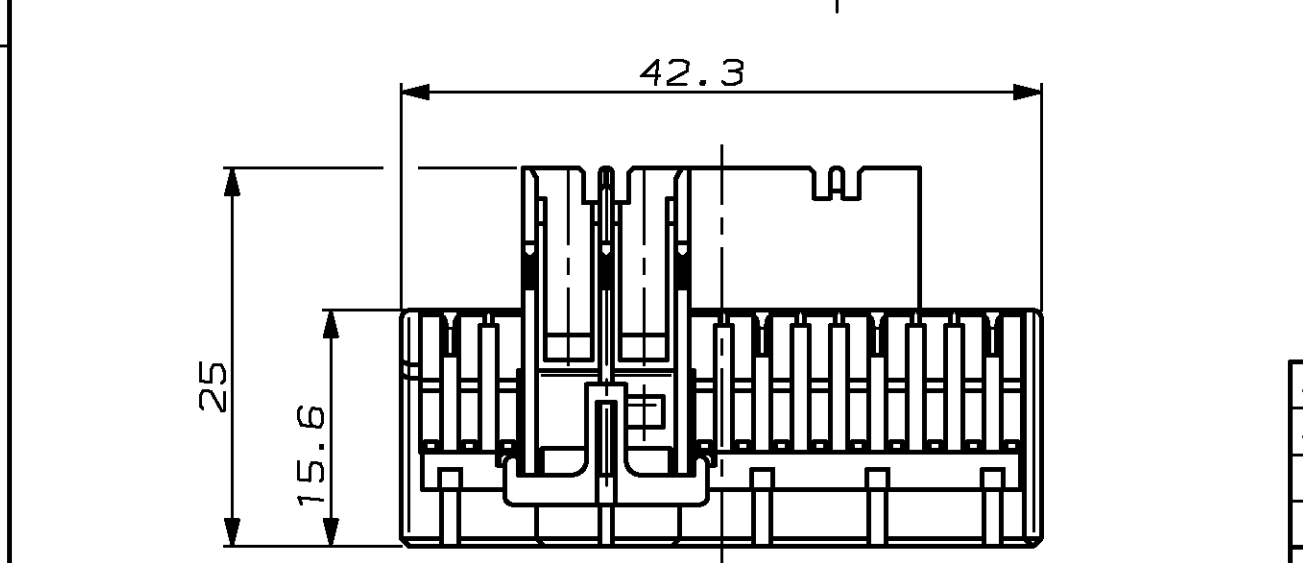


REVISIONS		DATE	DWN	APVD
AENDERUNGEN	DESCRIPTION			
BESCHREIBUNG				
A	Zeichnung erstellt	27.02.96	L.Post	-
A1	SEE PCN EG00-0366-98-40	24-APR-98	KBWWE	-



Bemerkungen

- △ 1 AMP-Logo
AMP-LOGO
- △ 2 Bestell-Nummer
ORDER-NO.
- △ 3 Werkzeugänderungsindex
REVISION STATUS OF THE MOULD
- △ 4 Werkstoffkennzeichnung
MATERIAL MARKING
- △ 5 Produktionsdatum
PRODUCTION DATE
- △ 6 Feld für Nestmarkierung
FIELD FOR CAVITY MARKING
- △ 7 Strichzahl ist abhängig von der Verarbeitungsmaschine
PART NUMBER WILL BE DICTATED BY PROCESS



JUNIOR-POWER-TIMER	927 768-1	927 777-1	1.5 - 2.5 mm ²	CuFe2	PRE TIN PLATED	878 180-2	169 400 MATRIZE, 734 468
JUNIOR-POWER-TIMER	927 771-1	927 779-1	0.5 - 1 mm ²	CuFe2	PRE TIN PLATED	878 181-2	169 400 MATRIZE, 169 917
MODU IV	963 720-1	965 969-1	0.2 - 0.50mm ²	CuSn	PRE TIN PLATED	878 635-7	-
MODU IV	167 418-1	167 419-1	0.2 - 0.56mm ²	CuSn	PRE TIN PLATED	872 006-7	169 481-1

CONTACTS	AMP ORDER NUMBER		WIRE RANGE	MATERIAL	FINISH	CRIMP TOOL	
	STRIP FORM	LOOSE PIECE				APPLICATOR	HAND TOOL
-	-	968443-1	A	-	PA66	schwarz	JPT/MODU IV Gehäuse, 28pol.

CUSTOMER PART NO	AMP PART NO	REV.	PCS.	MATERIAL	SURFACE COLOR	DESCRIPTION	ITEM NO
-	968443-1	A	-	PA66	schwarz	JPT/MODU IV Gehäuse, 28pol.	-

DIMENSIONS, DIMENSIONEN, mm		TOLERANCES UNLESS OTHERWISE SPECIFIED, ALLGEMEINE TOLERANZEN		DWN	27-FEB-96	AMP Deutschland GmbH	
n. ISO 2768 - mH - E	0 PLC ±0.05 mm	n. DIN 16901 - T40	1 PLC ±0.05 mm	L.Post	28-FEB-96	D - 63225 Langen	
2 PLC ±0.05 mm	3 PLC ±	ANGLES /WINKEL ±		CHK	J.Kunze	AMP	
MATERIAL		FINISH/OBERFLÄCHE/FARBE		APVD	-	JPT/MODU IV-HOUSING, 28POS.	
-		-		PRODUCT SPEC	-	JPT/MODU IV-Gehäuse, 28pol.	
-		-		APPLICATION SPEC	-	SIZE	CAGE CODE
-		-		WEIGHT	-	A3	00779
-		-		GEWICHT	-	C-968 443	
-		-		CUSTOMER DRAWING /KUNDENZEICHNUNG		DRAWING NO	RESTRICTED TO NUR FUER
-		-		/KUNDENZEICHNUNG		ZEICHNUNGS-NR.	-
-		-		MASSSTAB		2:1	BLATT
-		-		OF		1	VON 1
-		-		REV		A1	