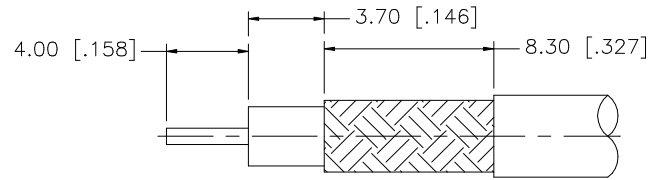
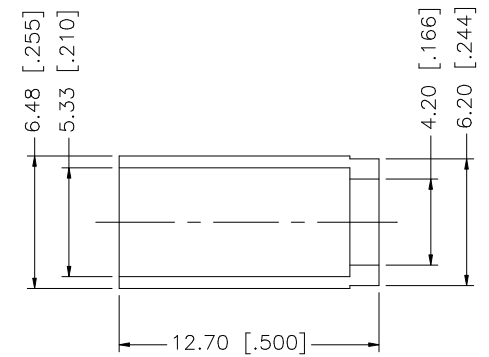
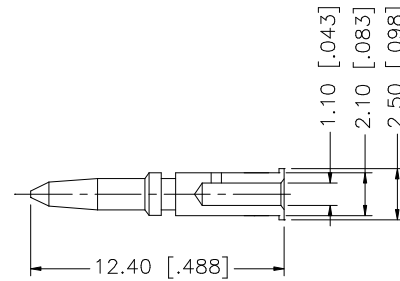
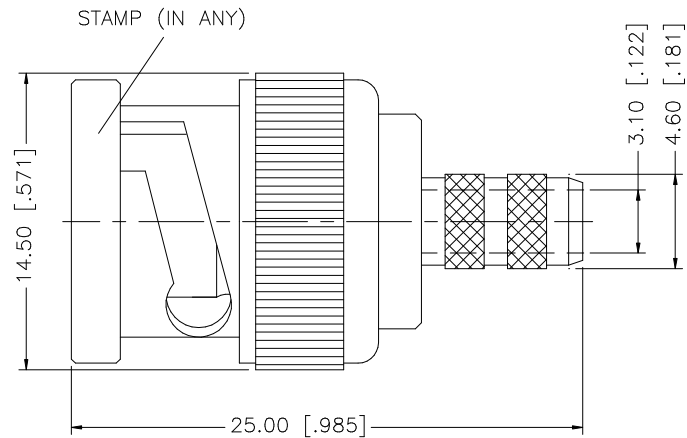


REV.	DATE	DESCRIPTION
NC	05/24/05	INITIAL RELEASE
A	10/11/99	UPDATE DRAWING / MODIFY FERRULE
B	07/31/01	MODIFY FERRULE
C	08/10/05	UPDATE DRAWING FORMAT



RECOMMENDED  
CABLE STRIPPING DIM'S



8				<small>UNLESS OTHERWISE SPECIFIED DIMENSIONS ARE IN MILLIMETERS. DIMENSIONS IN [ ] ARE IN INCHES AND FOR CUSTOMER REFERENCE ONLY.</small>  <small>UNLESS OTHERWISE SPECIFIED TOLERANCES FOR MILLIMETERS ARE:</small> 0.5 - 8mm ± 0.20mm 8 - 30mm ± 0.40mm 30 - 120mm ± 0.50mm  <small>UNLESS OTHERWISE SPECIFIED TOLERANCES FOR INCHES ARE:</small> .020 - .315 = ± 0.007" .315 - 1.180 = ± 0.015" 1.180 - 4.724 = ± 0.020"	APPROVALS	DATE	<h1 style="color: blue;">Amphenol Connex</h1>				
7					DRAWN	G.R.S.					08/10/05
6					CHECKED			<b>PART DESCRIPTION</b>  <b>BNC CRIMP PLUG</b> <b>(58T BELDEN 89907)</b>			
5					ISSUED						
4	FERRULE	BRASS	NICKEL		1	SHEET	1 OF 1	<b>PART NO.</b>  <b>112124</b>			
3	CONTACT PIN	BRASS	GOLD		1						
2	INSULATOR	DELRIIN	NATURAL		1			<b>DWG. NO.</b> 112124.DWG <b>REV.</b> C <b>SIZE</b> A <b>SCALE</b> NA			
1	BODY	BRASS	NICKEL		1	CAD FILE					
	DESCRIPTION	MATERIAL	FINISH	QTY	DO NOT SCALE DRAWING						