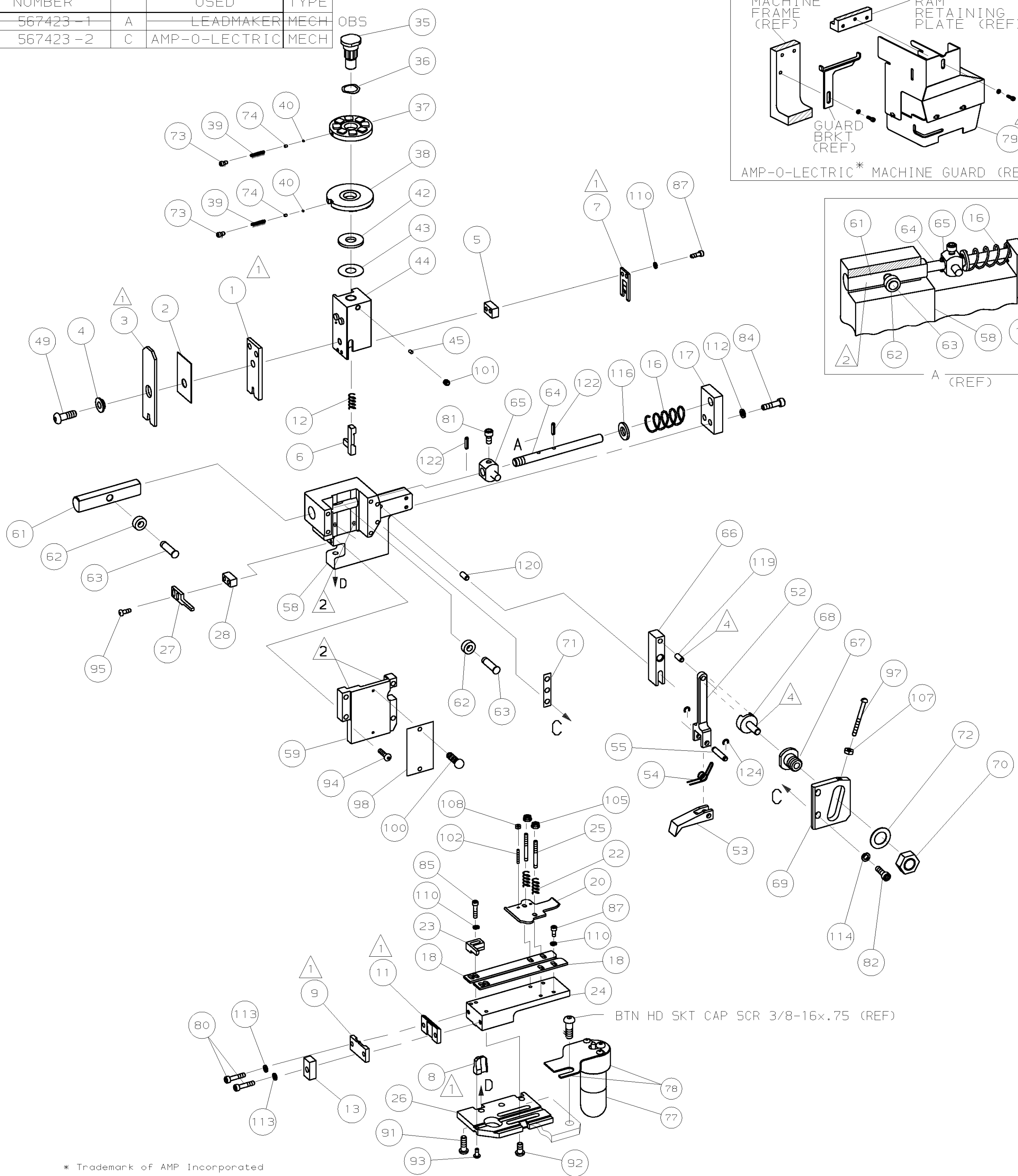
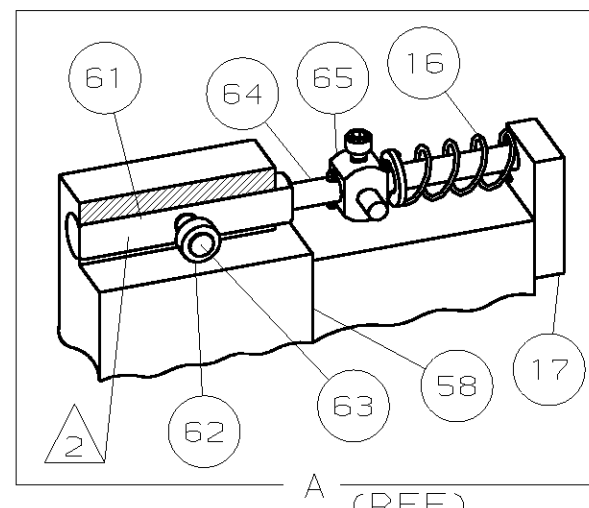
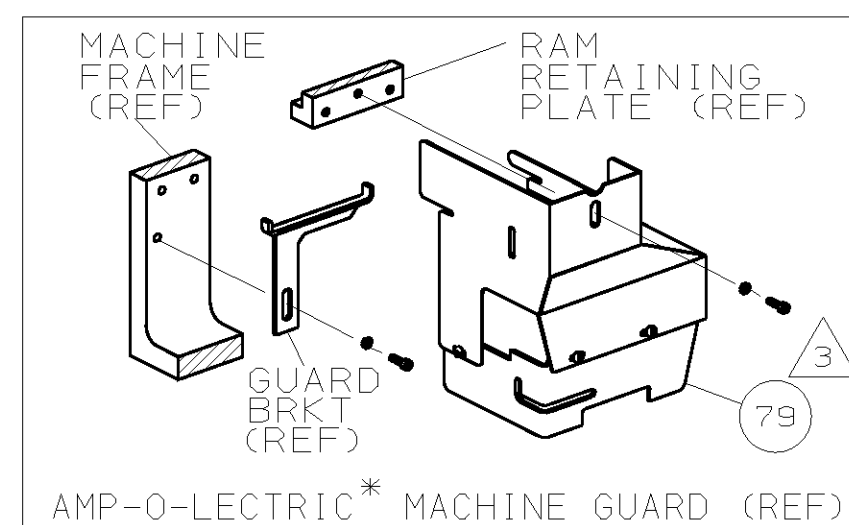


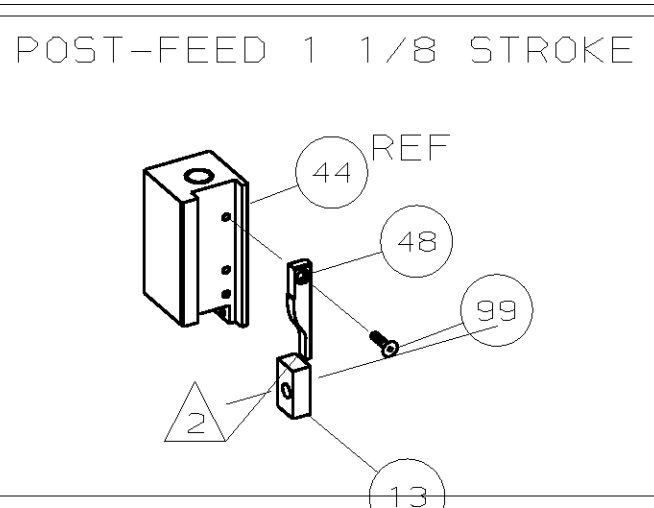
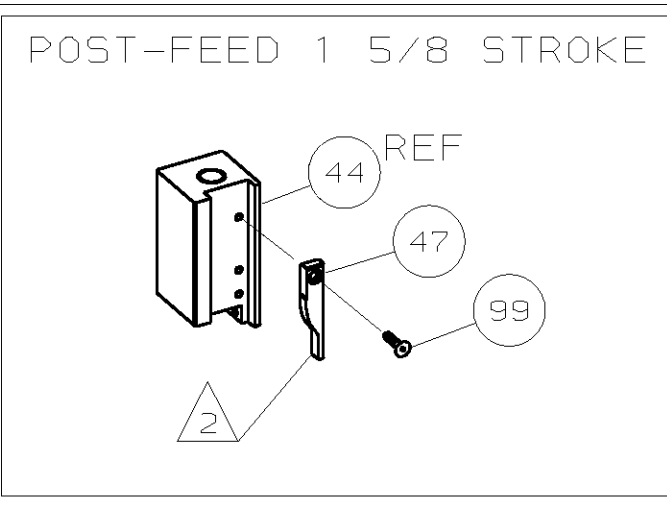
PART NUMBER	REV	FIRST USED	FEED TYPE
567423-1	A	LEADMAKER	MECH
567423-2	C	AMP-O-LECTRIC	MECH



1. RECOMMENDED SPARE PARTS.
2. GREASE LIGHTLY.
3. GUARD MUST BE IN PLACE WHEN OPERATING APPLICATOR IN AMP-O-LECTRIC MACHINE.
4. LUBRICATE DAILY USING NO. 20 MACHINE OIL.
5. ITEMS WITH QTY OF REF SPECIFIED (EXCEPT ITEM 79) ARE USED ON ITEM 32.

QTY	REV	REF	DESCRIPTION	ITEM NO
				130
				129
				128
				127
				126
				125
REF	REF	- A	21045-3 RING, RET "C" (Ø.187) FD PIN	124
				123
REF	REF	- A	5-21028-1 PIN, STD SPRING (Ø.12) FD ADJ ROD	122
				121
				120
REF	REF	- A	1-21030-7 PIN, DOWEL (Ø.187x1.50) H5G	120
REF	REF	- A	1-21030-1 PIN, DOWEL (Ø.187x.50) LEVER	119
				118
				117
REF	REF	- A	21899-4 WASHER, FLAT (Ø5/16) SCR ADJ	116
				115
REF	REF	- A	21024-5 WASHER, LOCK (NO.10) FD ADJ PL	114
2	2	- A	21024-5 WASHER, LOCK (NO.10) SHEAR PL	113
REF	REF	- A	21024-5 WASHER, LOCK (NO.10) FD ROD GDE	112
				111
7	7	- A	21024-4 WASHER, LOCK (NO.8) SHEAR BL	110
				109
2	2	- A	21018-4 NUT, HEX (4-40) DRAG	108
REF	REF	- A	21018-5 NUT, HEX (6-32) FD ADJ PL	107
				106
2	2	- A	21022-2 NUT, HEX 5L (8-32) DRAG STUD	105
				104
				103
2	2	- A	4-21078-8 SKT SKT SET (4-40x.75) DRAG	102
1	1	- A	21009-2 SCR, SKT SET (1/4-20x.25) RAM	101
2	2	- A	21017-2 SCR, DRIVE (#2x.19) ID PLATE	100
1	1	- A	1-21002-7 SCR, BHC (6-32x.38) CAM	99
1	1	- B	461264-1 PLATE, IDENTIFICATION	98
REF	REF	- A	6-23715-5 SCR, PAN HD (6-32x1.50) FEED ADJ	97
				96
2	2	- A	2-21002-2 SCR, BHC (8-32x.50) STRIPPER	95
REF	REF	- A	2-21002-9 SCR, BHC (10-32x.75) H5G CAP	94
1	1	- A	22733-8 SCR, BHC (8-32x.38 LW) ANVIL	93
4	4	- A	3-21002-3 SCR, BHC (1/4-20x.50) ST 6D PL	92
REF	REF	- A	2-22733-8 SCR, BHC (1/4-20x.62) BASE PL	91
				90
				89
				88
5	5	- A	2-21000-6 SCR, 5HC (8-32x.38) SLUG BLADE	87
				86
2	2	- A	2-21000-8 SCR, 5HC (8-32x.62) R 5TP GUIDE	85
REF	REF	- A	3-21000-7 SCR, SKT CAP (10-32x.75) FD GDE	84
				83
REF	REF	- A	3-21000-6 SCR, SKT CAP (10-32x.62) FD ADJ P	82
REF	REF	- A	3-21000-4 SCR, SKT CAP (10-32x.38) PIVOT BL	81
2	2	- A	3-21000-8 SCR, SKT CAP (10-32x.88) 5H PL	80
REF	REF	- A	455745-1 GUARD, WINDOW	79
1	1	- C	465184-9 LUBRICATOR ASSY	78
REF	REF	- B	852931-2 CRIMPER LUBRICANT	77
				76
				75
2	2	- A	690603-1 SPRING, ASSIST	74
2	2	- A	23030-1 SCR, SKT CAP (6-32x.25) CP DSC	73
REF	REF	- A	458109-1 WASHER, FLAT (SPECIAL)	72
REF	REF	- A	690517-1 SPACER	71

QTY	REV	REF	DESCRIPTION	ITEM NO
				70
				69
				68
				67
				66
				65
				64
				63
				62
				61
				60
REF	REF	- C	454220-1 CAP, RAM	59
REF	REF	- D	453736-1 HOUSING	58
				57
				56
REF	REF	- B	240624-1 PIN, FEED FINGER	55
REF	REF	- B	691499-1 SPRING, FEED FINGER	54
REF	REF	- B	240635-1 FINGER, FEED	53
REF	REF	- B	240634-1 LEVER, TERMINAL	52
				51
				50
1	1	- A	7-21002-9 BOLT, CRIMPER (5/16-24x1.00)	49
1	1	- B	690501-3 CAM, POST-FEED 1 1/8 ST	48
-	-	- B	690501-4 CAM, POST-FEED 1 5/8 ST	47
				46
1	1	- A	690191-1 PLUG, NYLON	45
1	1	- C	455674-1 RAM	44
1	1	- A	690125-1 WASHER, LAMINATED	43
1	1	- A	690124-1 WASHER, RAM	42
				41
2	2	- A	23241-6 BALL, STEEL	40
2	2	- A	690170-1 SPRING, COMPRESSION	39
1	1	- C	690142-1 DISC, INSULATION	38
1	1	- D	8-455829-6 DISC, WIRE	37
1	1	- A	22480-5 WASHER, SPRING	36
1	1	- B	690212-1 POST, RAM	35
				34
				33
1	1	- D	458980-1 APPLICATOR, BASIC (SUB ASSY)	32
				31
				30
				29
1	1	- B	2-690451-1 SPACER, STRIPPER	28
1	1	- A	240639-2 STRIPPER	27
REF	REF	- C	455676-1 PLATE, BASE	26
2	2	- A	22354-8 DRAG, STUD	25
1	1	- B	455678-1 PLATE, STRIP GUIDE	24
1	1	- C	240825-4 PLATE, STRIP HOLD DOWN	23
2	2	- A	4-22281-1 SPRING, DRAG	22
				21
1	1	- A	454177-1 DRAG, STOCK	20
				19
2	2	- C	454204-3 GUIDE, STRIP (FRONT)	18
REF	REF	- A	454178-1 GUIDE, FEED ROD	17
REF	REF	- A	4-22284-9 SPRING, FEED RETURN	16
				15
				14
1	1	- A	690481-7 SPACER, HOLD DOWN	13
1	1	- A	23846-1 SPRING, HOLD DOWN	12
1	1	- B	240644-1 PLATE, REAR SHEAR	11
				10
1	1	- B	690482-6 PLATE, FRONT SHEAR	9
1	1	- D	6-683452-4 ANVIL	8
1	1	- B	690474-6 BLADE, SLUG	7
1	1	- D	2-455892-5 HOLD DOWN, TERMINAL	6
1	1	- C	5-240641-2 SPACER, SLUG BLADE	5
1	1	- B	238009-1 SPACER, BLOCK CRIMPER	4
1	1	- C	1-456134-4 CRIMPER, INSULATION	3
1	1	- B	2-455888-2 SPACER, CRIMPER	2
1	1	- C	2-456406-9 CRIMPER, WIRE	1



CRIMPING DATA				
PAD LTR	CRIMP HEIGHT	WIRE SIZE	WIRE LENGTH	
A	.047	18	.137-.177	
B	.044	20	.137-.177	
C	.039	22	.137-.177	
NOT USED				
CRIMP	SIZE	TYPE	FEED	APPL INST
	.090	F	.774	AI 8039
WIRE RANGE	INSULATION RANGE	SET UP GAGE	LAYOUT	TERM APPL SPEC
22-18	.047-.138	458638-1	L1428	114-5130

TERMINAL NAME: REC CONTACT FOR IGNITION PLUG

LEADMAKER
T TERMINATING UNIT

AMP-O-LECTRIC
K TERMINATING UNIT
MACHINE NO. 565435-5

THIS DRAWING IS A CONTROLLED DOCUMENT.

THIS DRAWING IS UNRELEASED. RELEASE FOR PUBLICATION BY AMP INCORPORATED. ALL RIGHTS RESERVED. COPYRIGHT 19

567423

DIMENSIONS IN INCHES. DO NOT SCALE PRINT. TOLERANCES UNLESS OTHERWISE SPECIFIED:
 2 PLC DEC ±
 3 PLC DEC ±
 4 PLC DEC ±
 ANGLES ±
 SURF TEXTURE: ✓
 REMOVE BURRS, BREAK SHARP EDGES R.015 MAX

MATL - HT TR - FIN -
 DR 7/12/91 APP -
 P. MATHIAS
 CHK - REL -
AMP AMP Incorporated Harrisburg, PA 17105-3608
 NAME: END FEED HDM APPLICATOR MACHINE REF: MINI APPL
 SCALE: NT5 DWG NO: 567423 SHEET: 1 OF 1 REV: C
 CASE CODE: 00779 CUSTOMER AND ASSEMBLY DRAWING RESTRICTED TO