

5

4

3

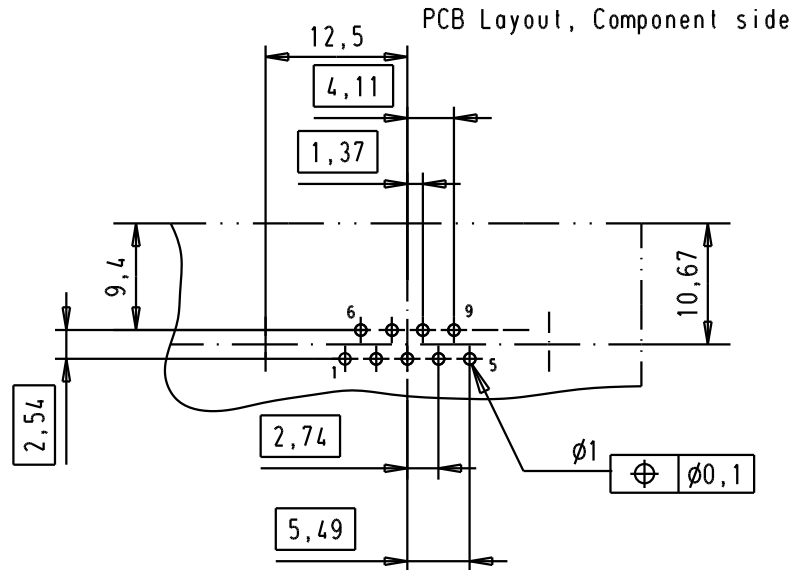
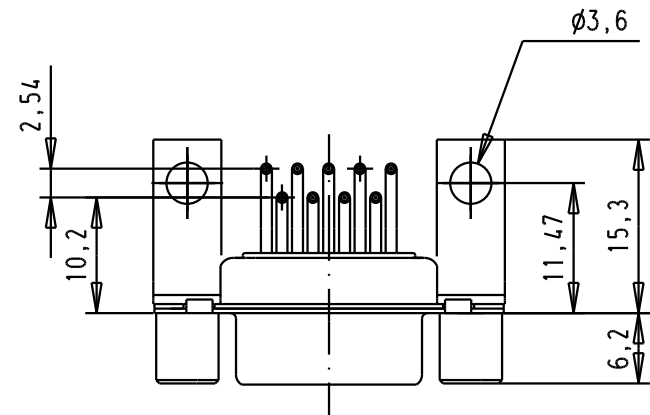
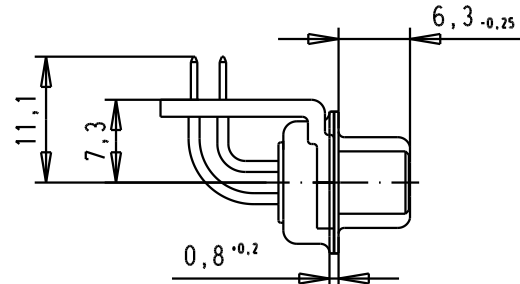
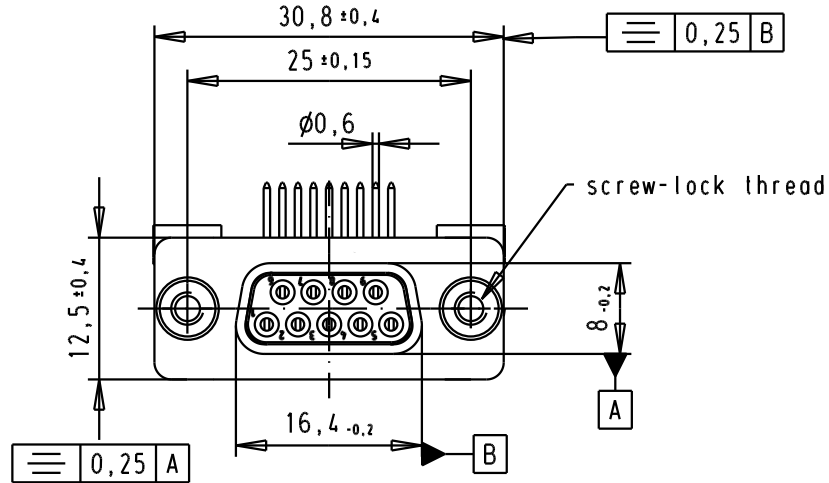
2

1

SPECIFICATION

Mating Cycles	500
Filter type	C
Capacitance	47pf ±20%
Working Voltage	100v
Current Rating	7,5A
Insulation Resistance	>1GΩ

FREQUENCY (MHz)	ATTENUATION dB
5	-
10	-
50	-
100	-
500	30dB
1000	35dB



D

C

B

A

09641147219	M3		33231	07/10/05	JMDR				
09641147218	UNC 4-40		31058	8-JUL-02	CV				
Part number	screw-lock thread		Mod.	Dat.	Name				

	Dat.	Name
Detail.	8-JUL-02	CV
Insp.		
Stand.		

All Dim. in mm
Orig. Size DIN A 4

HARTING EURL
F-95972 Paris

D-Sub, female, angled,
9 Poles, solder pins, tin
plated shell with brackets,
screw-locks and holes

TB 0964114721x

Sub.

Mo?MsLab/
Scale
1.5:1

Blatt/ Page
4 / 4