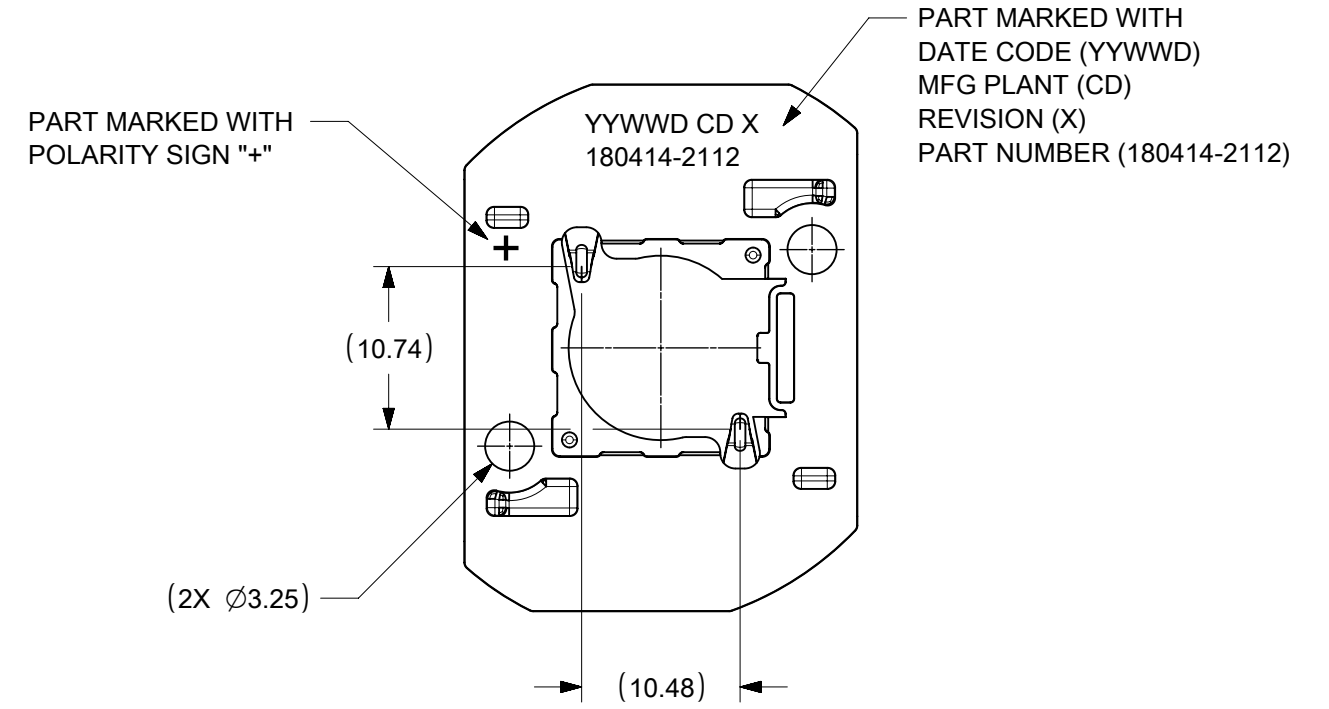
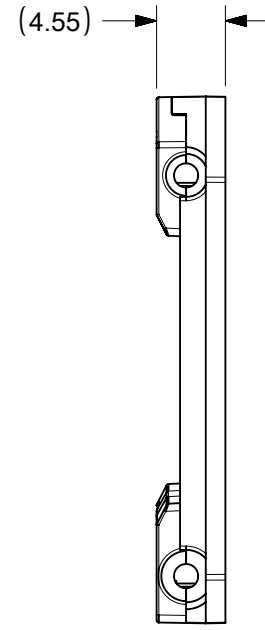
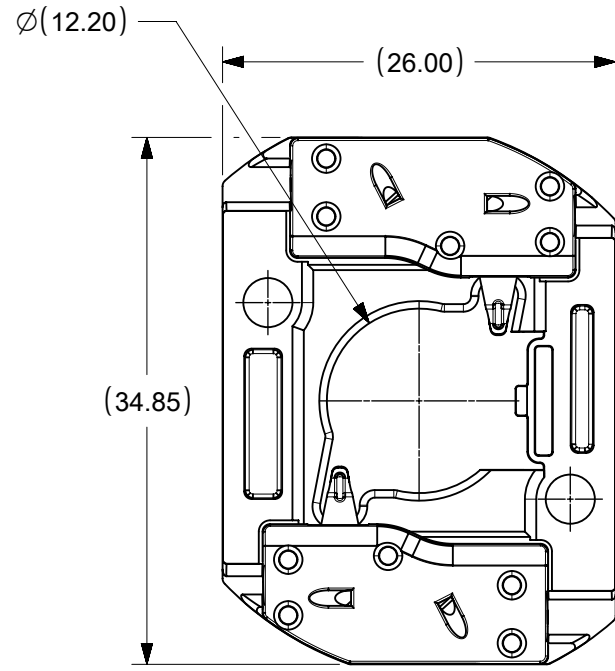


10	9	8	7	6	5	4	3	2	1
PART NUMBER	DESCRIPTION	POCKET DEPTH	HOUSING	TERMINAL	CAP				
180414-2112	COB LED HOLDER ASSEMBLY	0.75	180413-2112	180155-0133	180154-0105				

P/N 180414-2112 HOLDER ASSEMBLY
(0.75 POCKET DEPTH)



NOTES:

1. MATERIALS: HOUSING AND CAPS: POLYESTER PBT GLASS FILLED; COLOR: WHITE; TERMINAL: COPPER ALLOY
2. FINISHES: TERMINAL CONTACT: SELECT GOLD OVER NICKEL
WIRE TRAP: SELECT TIN OVER NICKEL
3. PRODUCT SPECIFICATION: 180414-0000-PS
4. PACKAGING SPECIFICATION: PK-180419-005
5. UL:OLFB2 UL496 FILE NO. E345583
6. ELV AND ROHS COMPLIANT
7. FOR USE WITH: 13.5 MM X 13.5 MM COB LED
8. WIRE GAUGE: 18, 20, AND 22 AWG, SOLID OR STRANDED WITH TIN OVERCOAT. STRIP LENGTH 10MM +2.0/-0.0MM.
9. ALL DIMENSIONS IN PARENTHESES (XX.XX) ARE FOR REFERENCE ONLY

THIS DRAWING CONTAINS INFORMATION THAT IS PROPRIETARY TO MOLEX ELECTRONIC TECHNOLOGIES, LLC AND SHOULD NOT BE USED WITHOUT WRITTEN PERMISSION									
DIMENSION UNITS		SCALE		CURRENT REV DESC:				molex	
mm		2:1		EC NO: 624787				COB LED HOLDER ASSEMBLY	
GENERAL TOLERANCES (UNLESS SPECIFIED)				DRWN: VLOKESHA 2019/06/13				13.5 MM X 13.5 MM SQUARE	
4 PLACES ±		±		CHK'D: GGA 2019/11/11				PRODUCT CUSTOMER DRAWING	
3 PLACES ±		±		APPR: GGA 2019/11/11				DOCUMENT NUMBER	
2 PLACES ±		0.13 ±		INITIAL REVISION:				SD-180414-112	
1 PLACE ±		0.25 ±		DRWN: MCOLE 2013/12/09				DOC TYPE	
0 PLACES ±		±		APPR: DMCGOWAN 2013/12/09				DOC PART	
ANGULAR TOL ± 0.5°				THIRD ANGLE PROJECTION		DRAWING		REVISION	
DRAFT WHERE APPLICABLE MUST REMAIN WITHIN DIMENSIONS				B-SIZE		SERIES		SHEET NUMBER	
				180414		MATERIAL NUMBER		CUSTOMER	
						SEE CHART		GENERAL MARKET	
								1 OF 3	

DOCUMENT STATUS	P1	RELEASE DATE	2019/11/11	02:36:40
-----------------	----	--------------	------------	----------

10	9	8	7	6	5	4	3	2	1
----	---	---	---	---	---	---	---	---	---

F

F

E

E

D

D

C

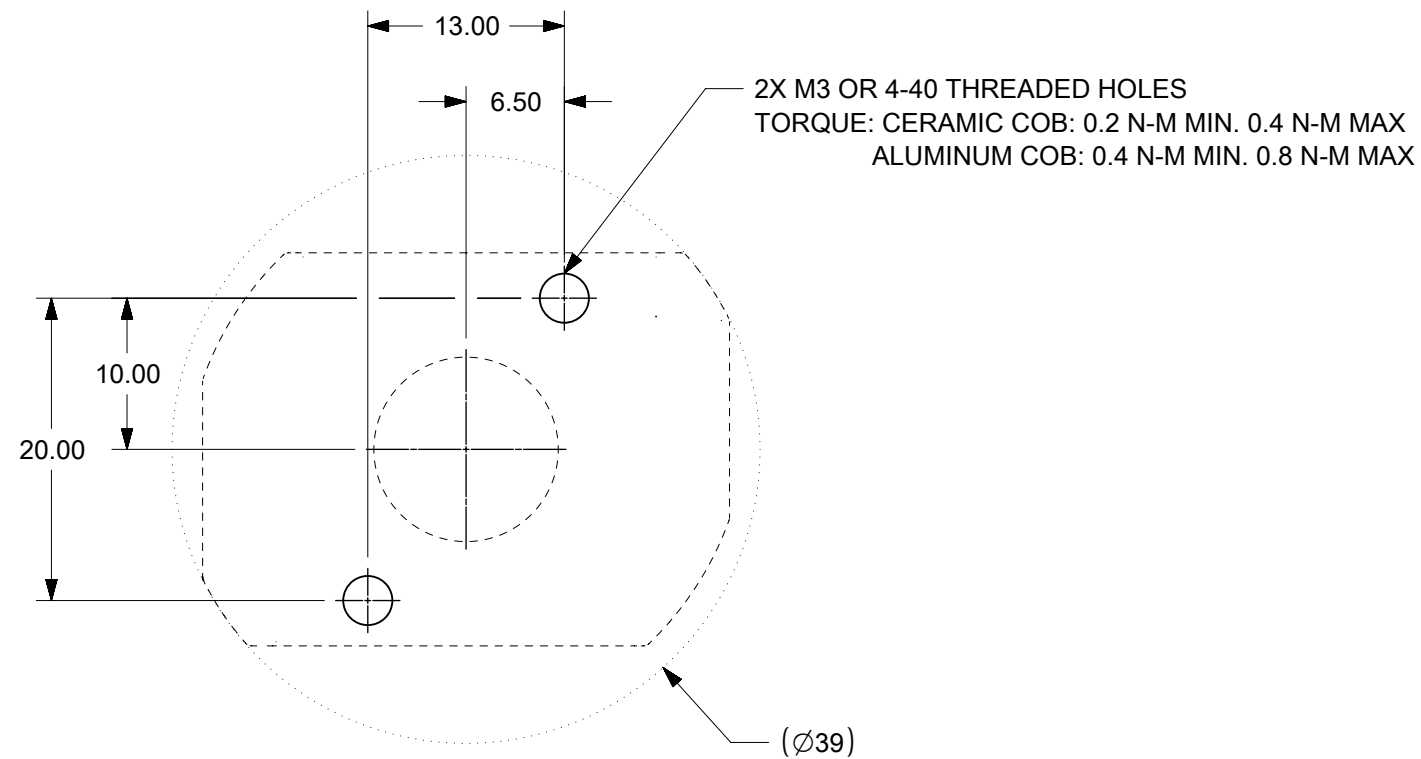
C

B

B

A

A

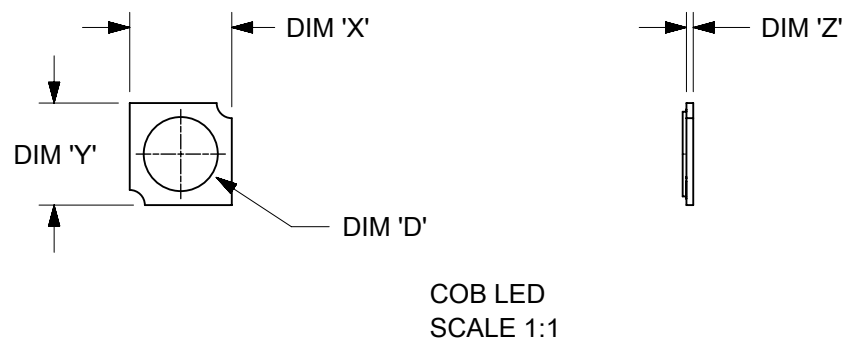
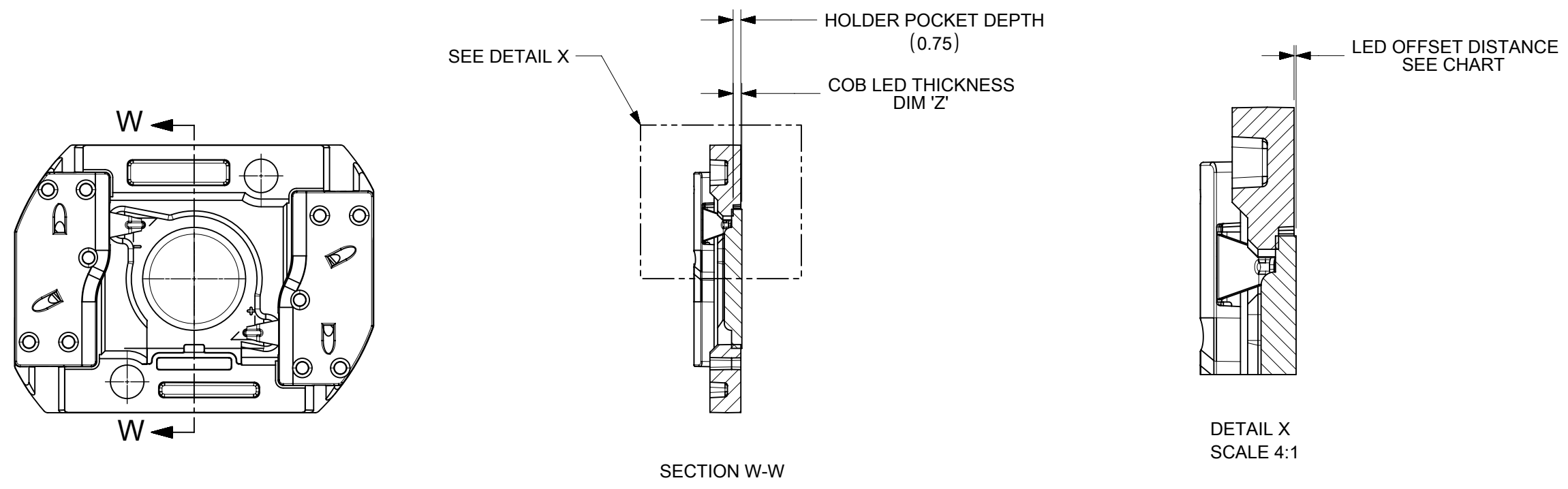


RECOMMENDED MOUNTING DIMENSIONS

THIS DRAWING CONTAINS INFORMATION THAT IS PROPRIETARY TO MOLEX ELECTRONIC TECHNOLOGIES, LLC AND SHOULD NOT BE USED WITHOUT WRITTEN PERMISSION									
DIMENSION UNITS		SCALE		CURRENT REV DESC:				molex	
mm		2:1		EC NO: 624787					
GENERAL TOLERANCES (UNLESS SPECIFIED)				DRWN: VLOKESHA		2019/06/13		COB LED HOLDER ASSEMBLY	
		MM	INCH	CHK'D: GGA		2019/11/11		13.5 MM X 13.5 MM SQUARE	
4 PLACES		±	±	APPR: GGA		2019/11/11		PRODUCT CUSTOMER DRAWING	
3 PLACES		±	±	INITIAL REVISION:					
2 PLACES		± 0.13	±	DRWN: MCOLE		2013/12/09		DOCUMENT NUMBER	
1 PLACE		± 0.25	±	APPR: DMCGOWAN		2013/12/09		SD-180414-112	
0 PLACES		±	±	ANGULAR TOL		± 0.5 °		DOC TYPE	
				THIRD ANGLE PROJECTION		DRAWING		DOC PART	
DRAFT WHERE APPLICABLE MUST REMAIN WITHIN DIMENSIONS				B-SIZE		SERIES		REVISION	
				180414		MATERIAL NUMBER		C5	
				SEE SHEET 1		CUSTOMER		SHEET NUMBER	
				GENERAL MARKET				2 OF 3	

COB MFG	TYPE	DIM 'X'	DIM 'Y'	DIM 'Z'	DIM 'D'	OFFSET
CITIZEN	CLL020, CLL022, CLU024, CLU026, CLU028	13.5	13.5	0.90	11.2	0.15
SEOUL	ZC6	13.5	13.5	0.90	10.0	0.15
TRIDONIC	SLE G5 LES10	13.5	13.5	0.90	9.4	0.15
CITIZEN	CLU025, CLU027	13.5	13.5	0.90	7.4	0.15
CITIZEN	CLU700, CLU701	13.5	13.5	0.90	7.8	0.15
EVERLIGHT	EAHP1313WA*, EAHP1313WB*, EAHP1313WC*	13.5	13.5	0.90	10.8	0.15
EVERLIGHT	EA1313 36V/3W	13.5	13.5	0.90	10.8	0.15
EVERLIGHT	EA1313 36V/6W	13.5	13.5	0.90	10.8	0.15
EVERLIGHT	EA1313 36V/10W	13.5	13.5	0.90	10.8	0.15
EVERLIGHT	EA1313 36V/13W	13.5	13.5	0.90	10.8	0.15
VOSSLOH-SCHWABE	DMC122C	13.5	13.5	1.00	10.0	0.25

ILLUSTRATION OF P/N 180414-2112 HOLDER MATED WITH LED



THIS DRAWING CONTAINS INFORMATION THAT IS PROPRIETARY TO MOLEX ELECTRONIC TECHNOLOGIES, LLC AND SHOULD NOT BE USED WITHOUT WRITTEN PERMISSION											
DIMENSION UNITS		SCALE		CURRENT REV DESC:							
mm		2:1		molex COB LED HOLDER ASSEMBLY 13.5 MM X 13.5 MM SQUARE PRODUCT CUSTOMER DRAWING							
GENERAL TOLERANCES (UNLESS SPECIFIED)											
4 PLACES	±	MM	INCH							EC NO: 624787	2019/06/13
3 PLACES	±									DRWN: VLOKESHA	2019/11/11
2 PLACES	±	0.13								CHK'D: GGA	2019/11/11
1 PLACE	±	0.25		APPR: GGA	2019/11/11						
0 PLACES	±			INITIAL REVISION:							
ANGULAR TOL		± 0.5°		DRWN: MCOLE	2013/12/09						
DRAFT WHERE APPLICABLE MUST REMAIN WITHIN DIMENSIONS		THIRD ANGLE PROJECTION		APPR: DMCGOWAN	2013/12/09						
DRAWING		SERIES		DOCUMENT NUMBER		DOC TYPE		DOC PART			
B-SIZE		180414		SD-180414-112		PSD		001			
MATERIAL NUMBER		CUSTOMER		SHEET NUMBER		REVISION					
SEE SHEET 1		GENERAL MARKET		3 OF 3		C5					