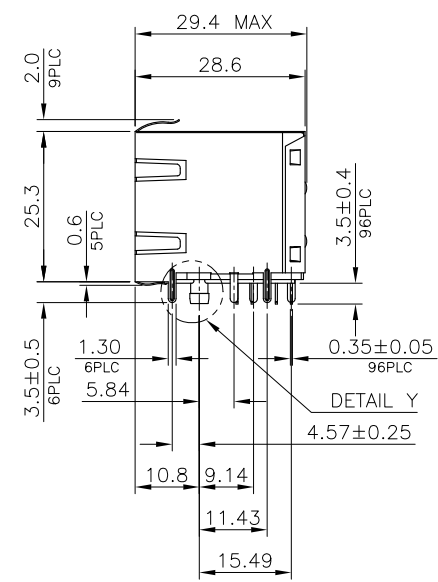
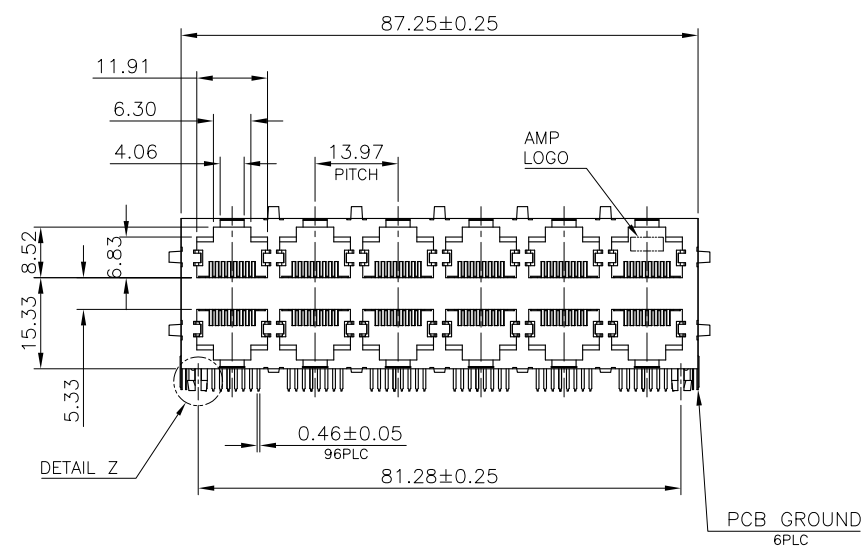
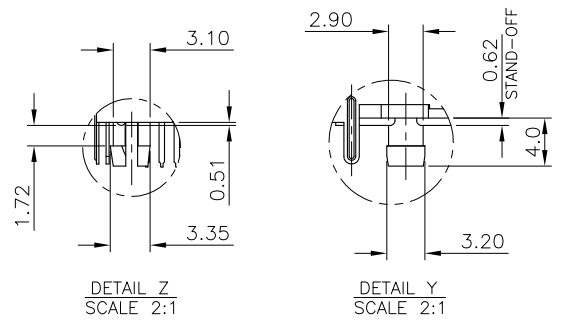
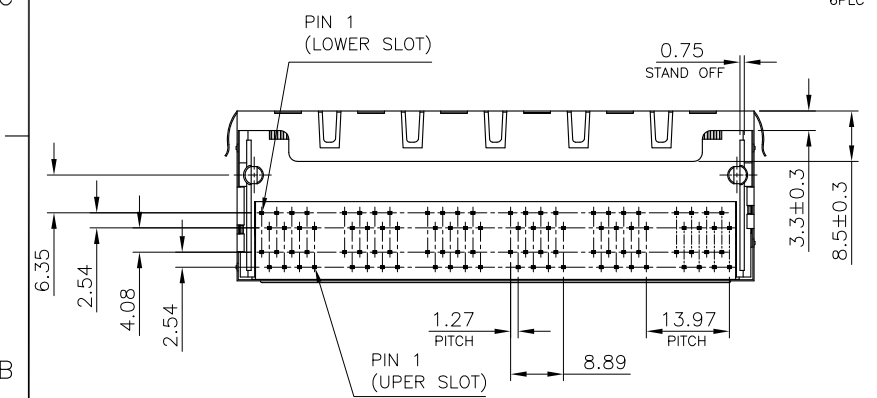


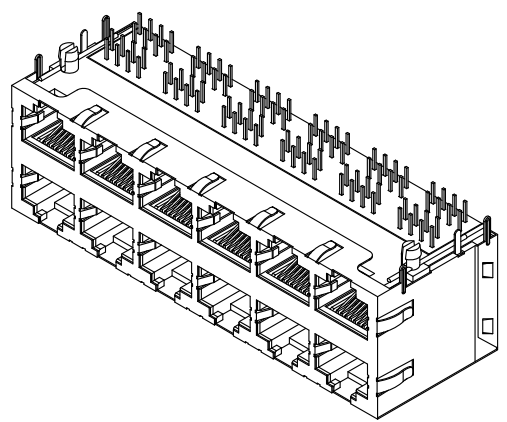
LOC	DIST	REVISIONS					
DW		P	LTR	DESCRIPTION	DATE	DWN	APVD
		B3		REVISED (ECR-12-012115, OBSOLETE P/N 2-2, 2-3, 2-4, 2-7, 2-8, 7-2, 7-3)	23OCT'12	E.L.	W.K.



NOTE:  
 1. MATERIAL:  
 1.1 HOUSING & COVER: THERMOPLASTIC (SEE TABLE), WITH 30% GF, UL94V-0, COLOR: BLACK.  
 1.2 INSERT HOUSING: PBT, WITH 30% GF, UL94V-0, COLOR: BLACK.  
 1.3 CONTACTS: PHOSPHOR BRONZE.  
 1.4 SHELL & INNER SHELL: BRASS.  
 2. FINISH:  
 2.1 CONTACTS: (SEE TABLE) GOLD PLATED ON CONTACT AREA. GOLD FLASH ON SOLDER TAIL. 1.27um [50u"] MIN. NICKEL UNDERPLATED OVERALL.  
 2.2 SHELL:  $\Delta$  - GOLD FLASH OVER 0.508um [20u"] MIN. NICKEL PLATED OVERALL.  
 $\Delta$  - 0.508um [25u"] MIN. NICKEL PLATED OVERALL.  
 $\Delta$  WAVE SOLDER CAPABLE TO 220°C.  
 $\Delta$  WAVE SOLDER CAPABLE TO 265°C PER TE TEST SPEC. 109-202, CONDITION B.  
 $\Delta$  OBSOLETE PARTS:  
 OBSOLETE CIS STREAMLINING PER D.RENAUD/D.SINISI.

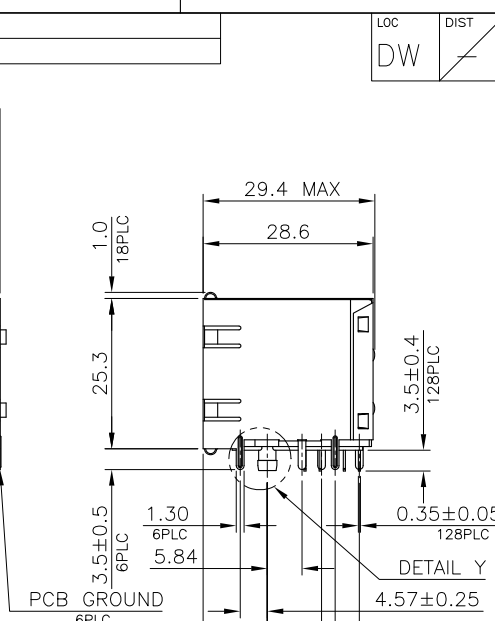
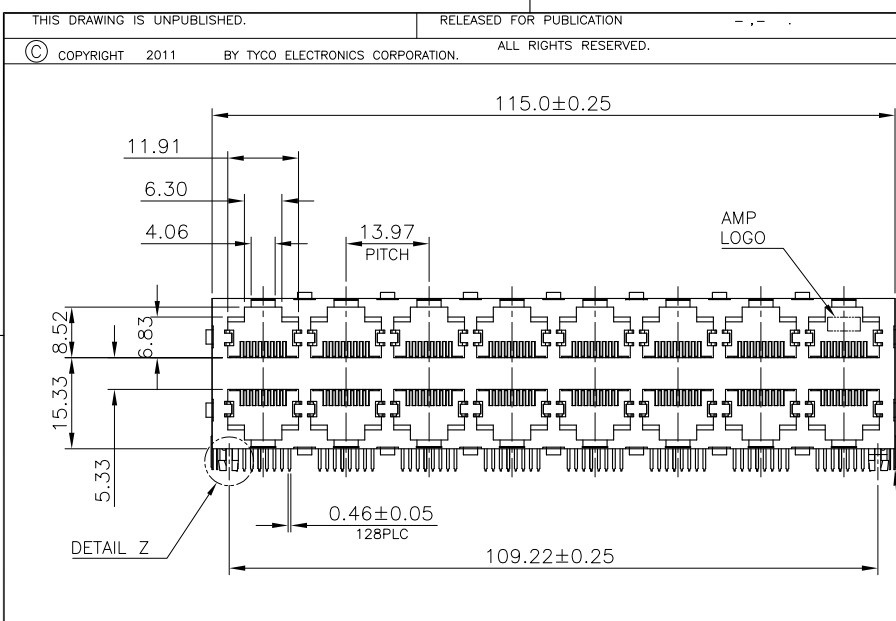


OBSOLETE	PA46	$\Delta$	12	$\Delta$	0.762um[30u"]	<del>6-1734473-6</del>
				$\Delta$	0.381um[15u"]	<del>6-1734473-5</del>
				$\Delta$	0.152um[6u"]	<del>6-1734473-4</del>
				$\Delta$	0.762um[30u"]	<del>6-1734473-3</del>
	PBT	$\Delta$	12	$\Delta$	0.381um[15u"]	<del>6-1734473-2</del>
				$\Delta$	0.152um[6u"]	<del>6-1734473-1</del>
				$\Delta$	0.762um[30u"]	<del>1-1734473-6</del>
				$\Delta$	0.381um[15u"]	<del>1-1734473-5</del>
				$\Delta$	0.152um[6u"]	<del>1-1734473-4</del>
				$\Delta$	0.762um[30u"]	<del>1-1734473-3</del>
				$\Delta$	0.381um[15u"]	<del>1-1734473-2</del>
				$\Delta$	0.152um[6u"]	<del>1-1734473-1</del>
HOUSING MATERIAL	NO. OF PORTS	SHIELD PLATED	MIN. GOLD THICKNESS	PART NUMBER		

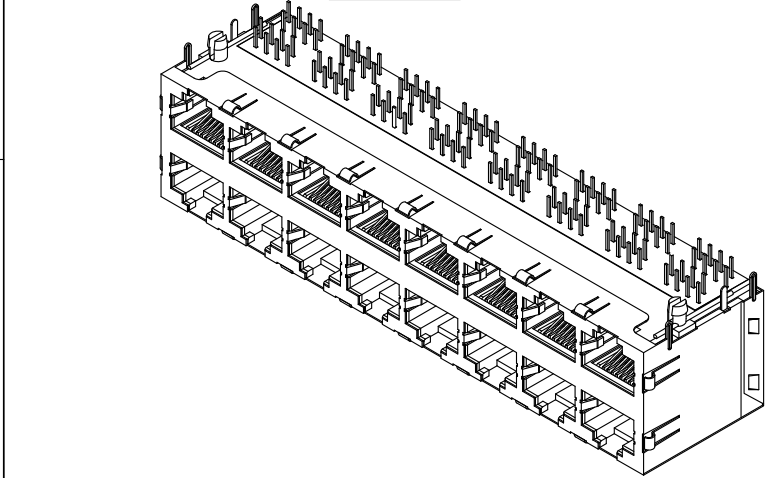
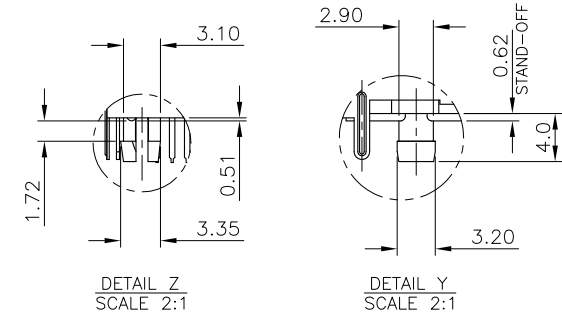
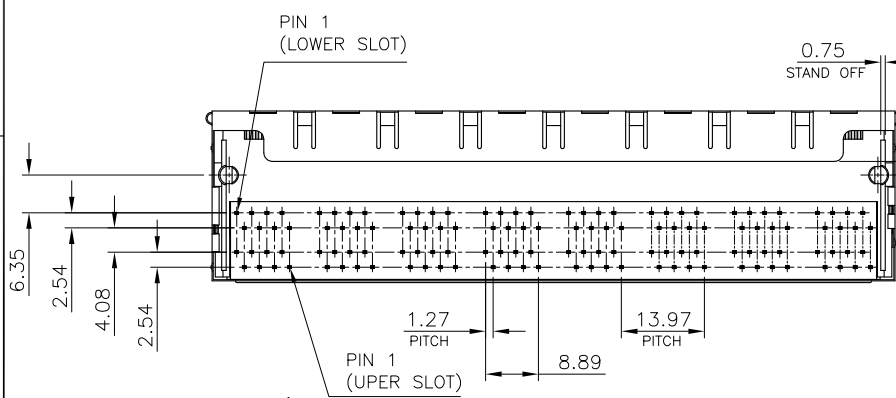


THIS DRAWING IS A CONTROLLED DOCUMENT.		DWN	S. CHIEN	07MAY2009	TE Connectivity
DIMENSIONS: mm		CHK	S. CHIEN	07MAY2009	
TOLERANCES UNLESS OTHERWISE SPECIFIED:		APVD	W. KODAMA	07MAY2009	
0 PLC ± - 1 PLC ± 0.3 2 PLC ± 0.2 3 PLC ± 0.15 4 PLC ± - ANGLES ± - 3°		PRODUCT SPEC	NAME		
MATERIAL SEE NOTE		FINISH SEE NOTE		108-57535 APPLICATION SPEC	
		WEIGHT	70 GRAMS	SIZE	A3
		CAGE CODE	00779	DRAWING NO	C=1734473
		CUSTOMER DRAWING		RESTRICTED TO	-
		SCALE	-	SHEET	1 of 6
				REV	B3

LOC	DW	DIST	REVISIONS			
P	LTR	DESCRIPTION	DATE	DWN	APVD	
		SEE SHEET 1.				



NOTE:  
 1. MATERIAL:  
 1.1 HOUSING & COVER: PBT, WITH 30% GF, UL94V-0, COLOR: BLACK.  
 1.2 INSERT HOUSING: PBT, WITH 30% GF, UL94V-0, COLOR: BLACK.  
 1.3 CONTACTS: PHOSPHOR BRONZE.  
 1.4 SHELL & INNER SHELL: BRASS.  
 2. FINISH:  
 2.1 CONTACTS: (SEE TABLE) GOLD PLATED ON CONTACT AREA. GOLD FLASH ON SOLDER TAIL. 1.27um [50u"] MIN. NICKEL UNDERPLATED OVERALL.  
 2.2 SHELL: 0.508um [25u"] MIN. NICKEL PLATED OVERALL.  
 3. WAVE SOLDER CAPABLE TO 240°C PER TE TEST SPEC. 109-202, CONDITION A.



OBSOLETE	PBT	16	25u" MIN. NICKEL	w/o	0.152um[6u"]	<del>2-1734473-8</del>
					0.762um[30u"]	<del>2-1734473-7</del>
				w/	0.762um[30u"]	<del>2-1734473-3</del>
					0.381um[15u"]	<del>2-1734473-2</del>
				0.152um[6u"]	2-1734473-1	
HOUSING MATERIAL	NO. OF PORTS	SHELL PLATING	TIN PLATED ON PCB GROUNDS	MIN. GOLD THICKNESS	PART NUMBER	

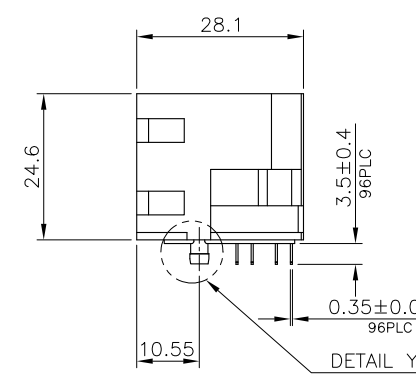
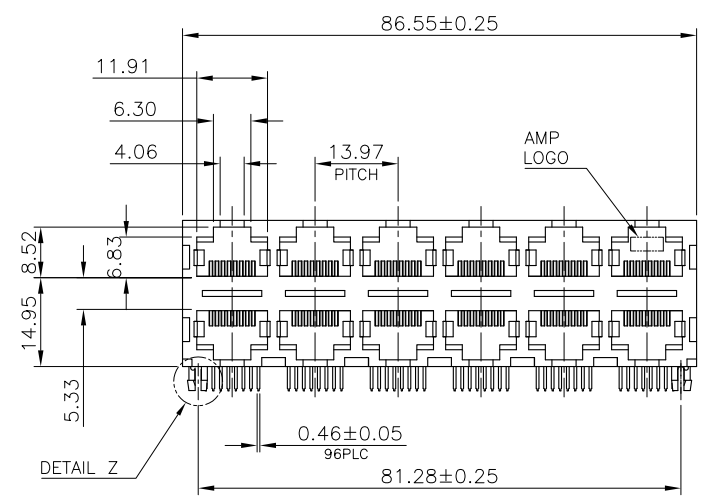
THIS DRAWING IS A CONTROLLED DOCUMENT.

DIMENSIONS: mm	TOLERANCES UNLESS OTHERWISE SPECIFIED: 0 PLC ± - 1 PLC ± 0.3 2 PLC ± 0.2 3 PLC ± 0.15 4 PLC ± - ANGLES ± 3'	DWN	CHK	APVD	PRODUCT SPEC	APPLICATION SPEC	WEIGHT	NAME	SIZE	CAGE CODE	DRAWING NO	RESTRICTED TO
MATERIAL	FINISH							MODULAR JACK RJ45, STACKED, MULTI-PORT, SHIELDED, THRU-HOLE, PANEL GROUND	A3	00779	C=1734473	
CUSTOMER DRAWING								SCALE	SHEET	2 of 6	REV	B3

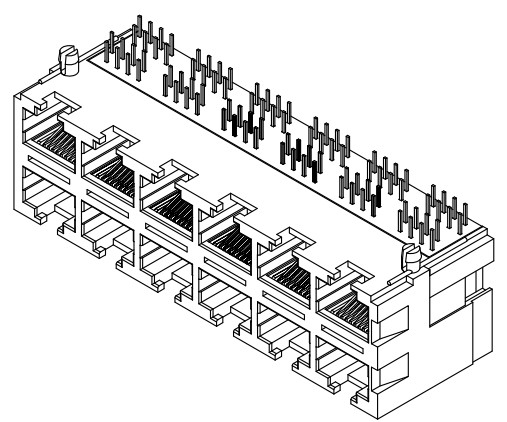
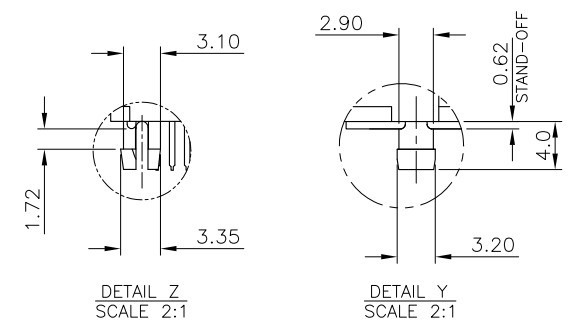
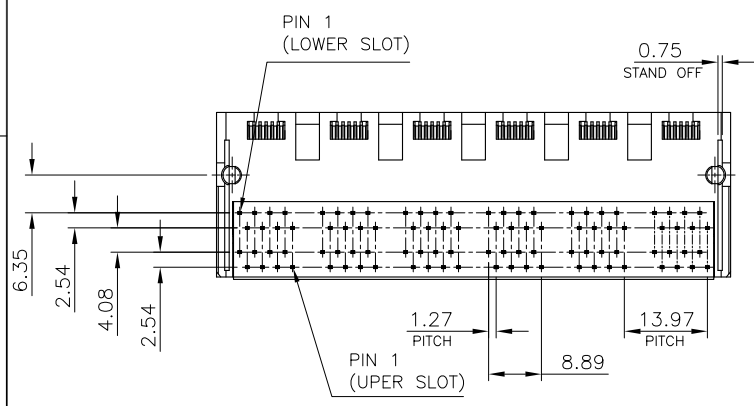
STE TE Connectivity

THIS DRAWING IS UNPUBLISHED. RELEASED FOR PUBLICATION  
 © COPYRIGHT 2011 BY TYCO ELECTRONICS CORPORATION. ALL RIGHTS RESERVED.

LOC DW	DIST	REVISIONS			
P	LTR	DESCRIPTION	DATE	DWN	APVD
		SEE SHEET 1.			



- NOTE:
- MATERIAL:
    - HOUSING & COVER: PBT, WITH 30% GF, UL94V-0, COLOR: BLACK.
    - INSERT HOUSING: PBT, WITH 30% GF, UL94V-0, COLOR: BLACK.
    - CONTACTS: PHOSPHOR BRONZE.
  - FINISH:
    - CONTACTS: (SEE TABLE) GOLD PLATED ON CONTACT AREA. GOLD FLASH ON SOLDER TAIL. 1.27um [50u"] MIN. NICKEL UNDERPLATED OVERALL.
    - WAVE SOLDER CAPABLE TO 240°C PER TE TEST SPEC. 109-202, CONDITION A.
  - THIS PRODUCT WITHOUT SHELL.



OBSOLETE	PBT	12	0.762um[30u"]	<del>7-1734473-3</del>
			0.381um[15u"]	7-1734473-2
OBSOLETE			0.152um[6u"]	<del>7-1734473-4</del>
	HOUSING MATERIAL	NO. OF PORTS	MIN. GOLD THICKNESS	PART NUMBER

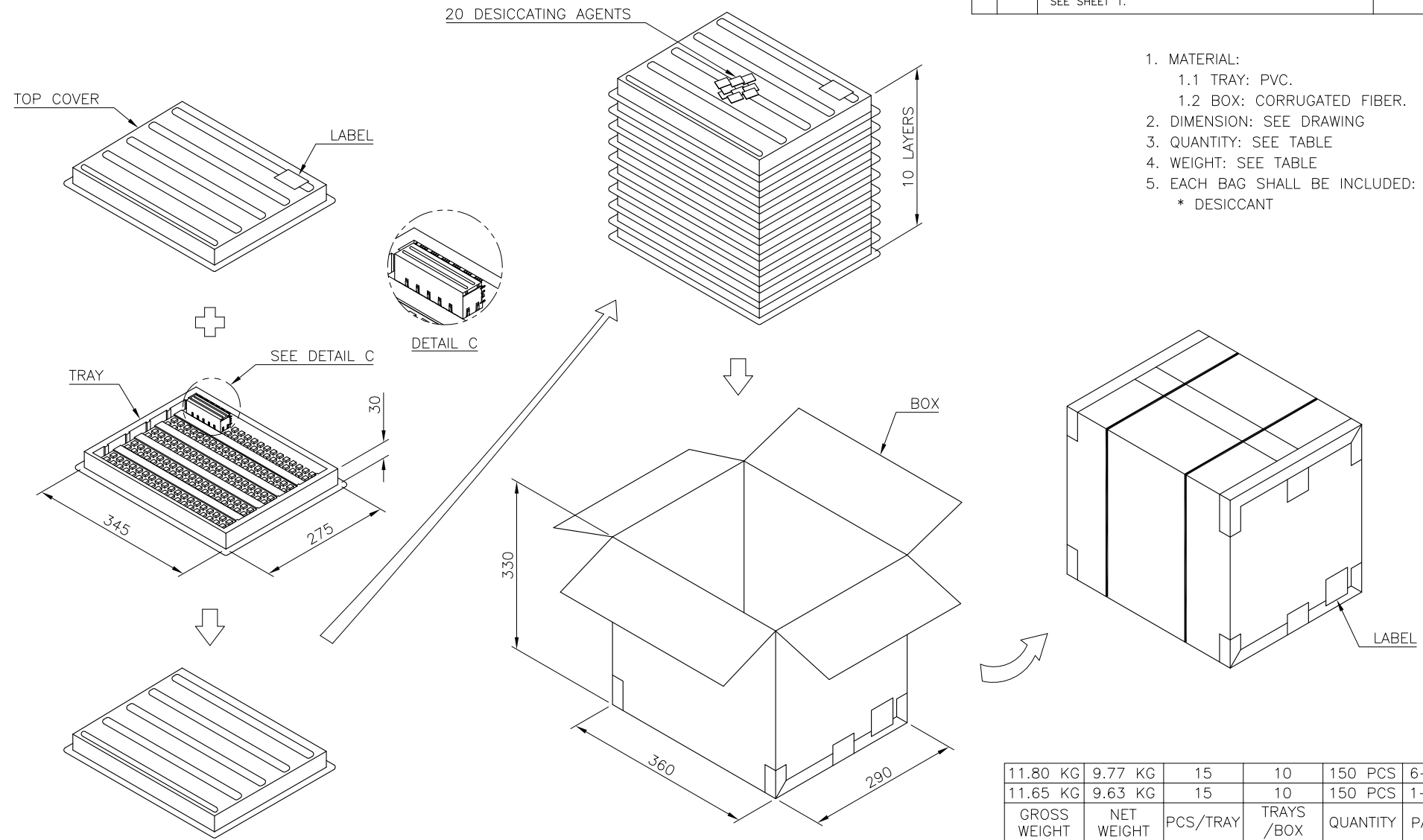
THIS DRAWING IS A CONTROLLED DOCUMENT.		DWN	TE Connectivity				
DIMENSIONS: mm		CHK				NAME	
TOLERANCES UNLESS OTHERWISE SPECIFIED:		APVD				MODULAR JACK RJ45, STACKED, MULTI-PORT, SHIELDED, THRU-HOLE, PANEL GROUND	
0 PLC ± - 1 PLC ± 0.3 2 PLC ± 0.2 3 PLC ± 0.15 4 PLC ± - 4 ANGLES ± 3°		PRODUCT SPEC				SIZE CAGE CODE DRAWING NO RESTRICTED TO	
MATERIAL	FINISH	APPLICATION SPEC	A3	00779	C=1734473		
		WEIGHT	CUSTOMER DRAWING		SCALE		
			SHEET 3 of 6		REV B3		



THIS DRAWING IS UNPUBLISHED. RELEASED FOR PUBLICATION  
 © COPYRIGHT 2011 BY TYCO ELECTRONICS CORPORATION. ALL RIGHTS RESERVED.

LOC	DIST	REVISIONS					
DW		P	LTR	DESCRIPTION	DATE	DWN	APVD
				SEE SHEET 1.			

1. MATERIAL:
  - 1.1 TRAY: PVC.
  - 1.2 BOX: CORRUGATED FIBER.
2. DIMENSION: SEE DRAWING
3. QUANTITY: SEE TABLE
4. WEIGHT: SEE TABLE
5. EACH BAG SHALL BE INCLUDED:
  - \* DESICCANT

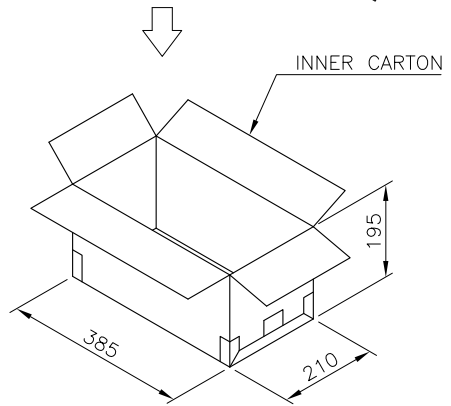
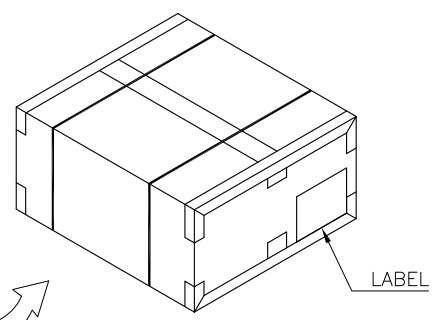
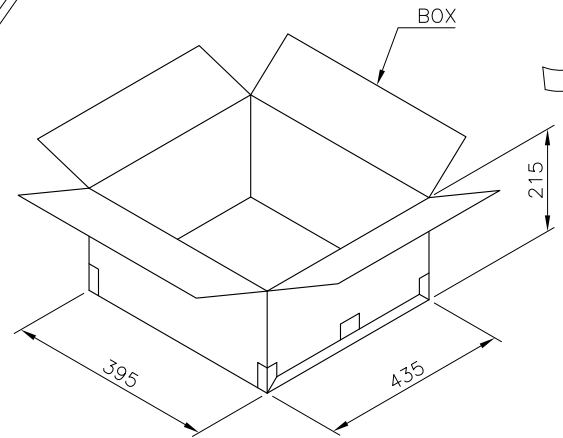
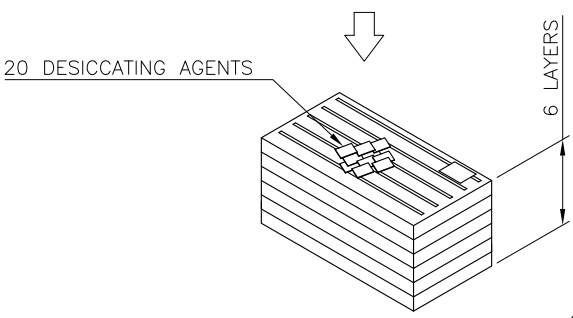
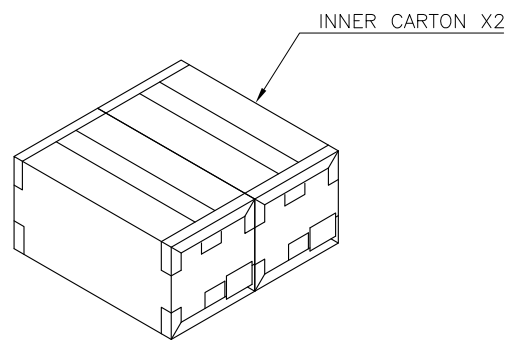
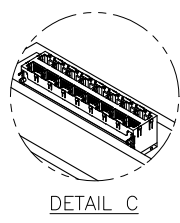
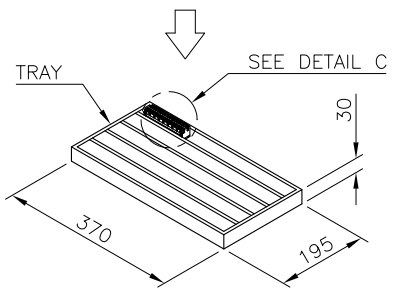
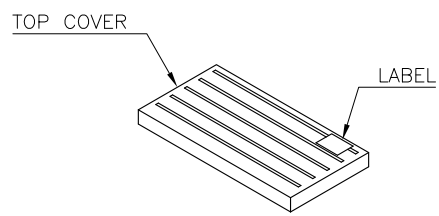


11.80 KG	9.77 KG	15	10	150 PCS	6-1734473-X
11.65 KG	9.63 KG	15	10	150 PCS	1-1734473-X
GROSS WEIGHT	NET WEIGHT	PCS/TRAY	TRAYS /BOX	QUANTITY	PART NUMBER

THIS DRAWING IS A CONTROLLED DOCUMENT.		DWN	TE Connectivity		
DIMENSIONS: mm		CHK	NAME		
TOLERANCES UNLESS OTHERWISE SPECIFIED:		APVD	MODULAR JACK RJ45, STACKED, MULTI-PORT, SHIELDED, THRU-HOLE, PANEL GROUND		
0 PLC ± - 1 PLC ± 0.3 2 PLC ± 0.2 3 PLC ± 0.15 4 PLC ± - ANGLES ± 3°		PRODUCT SPEC	SIZE		
MATERIAL		APPLICATION SPEC	CAGE CODE	DRAWING NO	RESTRICTED TO
FINISH		WEIGHT	A3	00779	©=1734473
		CUSTOMER DRAWING	SCALE	SHEET	REV
				5 of 6	B3

THIS DRAWING IS UNPUBLISHED. RELEASED FOR PUBLICATION  
 © COPYRIGHT 2011 BY TYCO ELECTRONICS CORPORATION. ALL RIGHTS RESERVED.

LOC DW	DIST	REVISIONS			
P	LTR	DESCRIPTION	DATE	DWN	APVD
		SEE SHEET 1.			



- MATERIAL:
  - 1.1 TRAY: PVC.
  - 1.2 BOX: CORRUGATED FIBER.
- DIMENSION: SEE DRAWING
- QUANTITY: SEE TABLE
- WEIGHT: SEE TABLE
- EACH BAG SHALL BE INCLUDED:
  - \* DESICCANT

14.20 KG	11.55 KG	20	6	2	240 PCS	7-1734473-X
18.50 KG	15.82 KG	15	6	2	180 PCS	2-1734473-X
GROSS WEIGHT	NET WEIGHT	PCS/TRAY	TRAYS/INNER BOX	INNER BOX/BOX	QUANTITY	PART NUMBER

THIS DRAWING IS A CONTROLLED DOCUMENT.

DIMENSIONS: mm	TOLERANCES UNLESS OTHERWISE SPECIFIED: 0 PLC ± - 1 PLC ± 0.3 2 PLC ± 0.2 3 PLC ± 0.15 4 PLC ANGLES ± - ± 3'	DWN - CHK - APVD - PRODUCT SPEC - APPLICATION SPEC - WEIGHT -	NAME <b>STE</b> TE Connectivity MODULAR JACK RJ45, STACKED, MULTI-PORT, SHIELDED, THRU-HOLE, PANEL GROUND
MATERIAL	FINISH	SIZE A3	CAGE CODE 00779
		DRAWING NO C=1734473	RESTRICTED TO -
		CUSTOMER DRAWING	SCALE - SHEET 6 of 6 REV B3