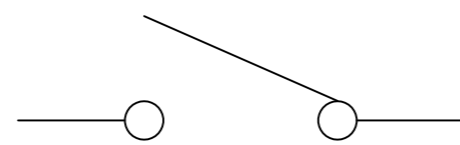
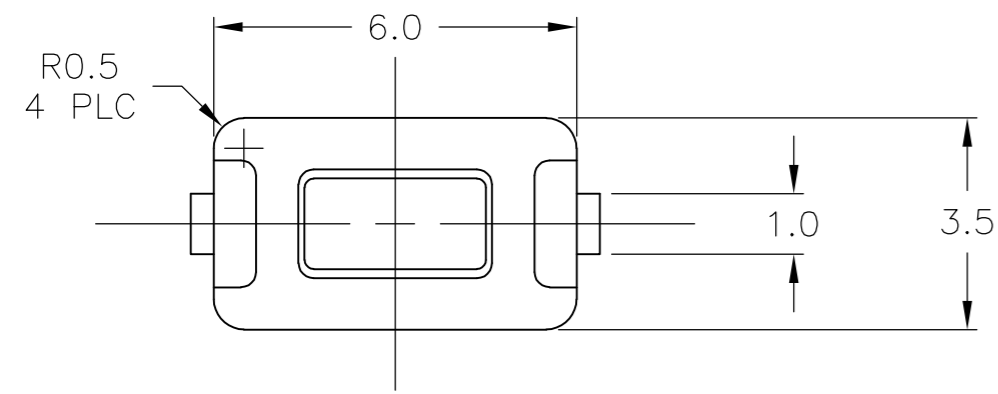


THIS DRAWING IS UNPUBLISHED. RELEASED FOR PUBLICATION
 © COPYRIGHT - By - ALL RIGHTS RESERVED.

LOC		DIST		REVISIONS			
P	LTR	DESCRIPTION		DATE	DWN	APVD	
	K3	REVISED PER ECO-11-024681		15MAR12	KH	PO	



CIRCUIT DIAGRAM

MATERIALS:

CASE: PPS, 30% GLASS, UL94V-0, COLOR-BROWN
 COVER: STAINLESS STEEL
 ACTUATOR: PPS COLOR: BLACK
 MOVING CONTACT: STAINLESS STEEL, SILVER PLATE
 FIXED CONTACT/TERMINAL: COPPER ALLOY, SILVER OR TIN OVER NICKEL

ELECTRICAL:

MAX CONTACT RATING: 50MILLIAMPS@24V DC
 MIN CONTACT RATING: 10MICROAMPS@1V DC
 INITIAL CONTACT RESITANCE: 100 MILLIOHMS MAX
 INSULATION RESISTANCE: 100 MEGAOHMS @ 100 VDC MIN
 DIELECTRIC STRENGTH: 500 VDC 50/60 HZ FOR 1 MINUTE
 LIFE EXPECTANCY: UP TO 40,000 CYCLES

MECHANICAL:

ACTUATION FORCE: 180±50gf
 ACTUATION TRAVEL: 0.25 +0.2/-0.1

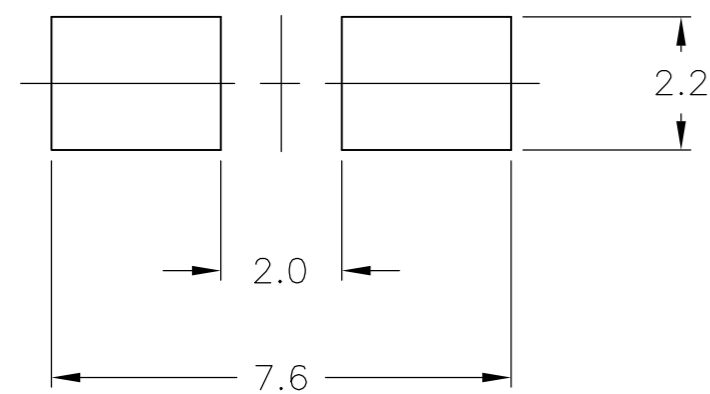
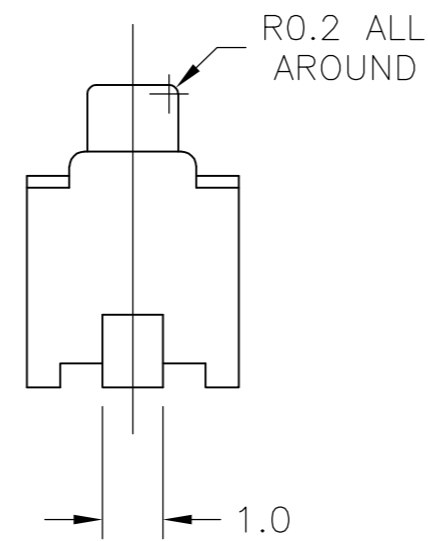
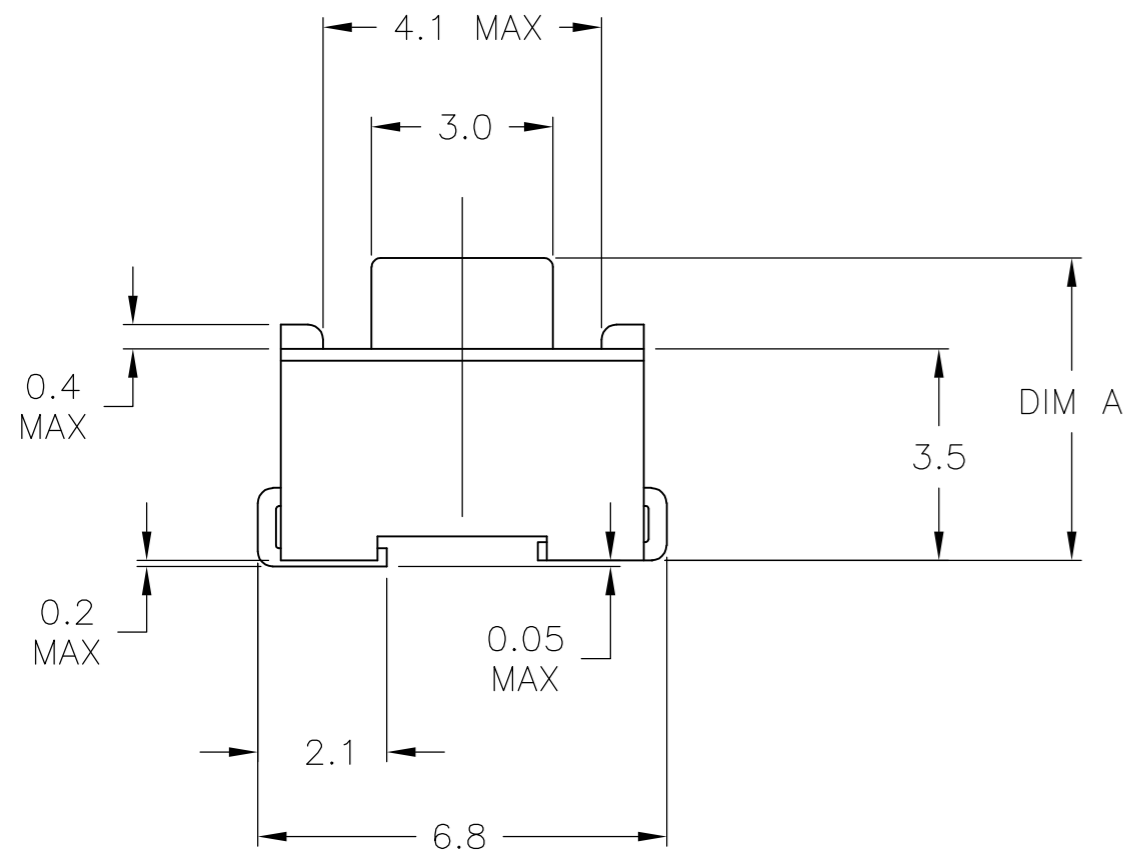
ENVIROMENTAL:

OPERATING TEMPERATURE: -35°C TO +85°C
 STORAGE TEMPERATURE: -35°C TO +85°C
 SOLDERABILITY: PER EIA-364-52, CLASS 1, CATEGORY 2
 SOLDER HEAT RESISTANCE: PER 109-201, CONDITION B

PACKAGING:

TAPE AND REEL PACKAGING PER EIA 481, 2000 PER REEL
 TAPE WIDTH 16mm PITCH 8mm

- 1 PRELIMINARY PART - NOT RELEASED FOR PRODUCTION.
- 2. ALL MATERIALS AND FINISHES SHALL COMPLY WITH EU DIRECTIVE 2002/95/EC OF 27JAN2003 (ROHS)
- 3 OBSOLETE PARTS: OBSOLETE CIS STREAMLINING PER D.RENAUD/D.SINISI



SOLDER LAND DIMENSION

3	OBSOLETE	Tin	4.3	FSM1JMSN TR	147873-5
3	OBSOLETE	Tin	5.0	FSM2JMSN TR	147873-4
		Silver	4.3	FSM1JMTR	147873-2
		Silver	5.0	FSM2JMTR	147873-1
		Finish	DIM A	Alcoswitch P/N	Part Number

THIS DRAWING IS A CONTROLLED DOCUMENT.		DWN R BROWN 03OCT01			
DIMENSIONS: mm		CHK H WYNKOOP 03OCT2001			
TOLERANCES UNLESS OTHERWISE SPECIFIED:		APVD H WYNKOOP 03OCT2001	NAME SWITCH, TACTILE, SMT		
0 PLC ± -		PRODUCT SPEC	SIZE CAGE CODE DRAWING NO RESTRICTED TO		
1 PLC ± 0.3		APPLICATION SPEC	A2 00779 C=147873		
2 PLC ± -		FINISH	SCALE 8:1 SHEET 1 of 1 REV K3		
3 PLC ± -		WEIGHT -			
4 PLC ± -		CUSTOMER DRAWING			
ANGLES ± 0°-30°					
SEE NOTES					