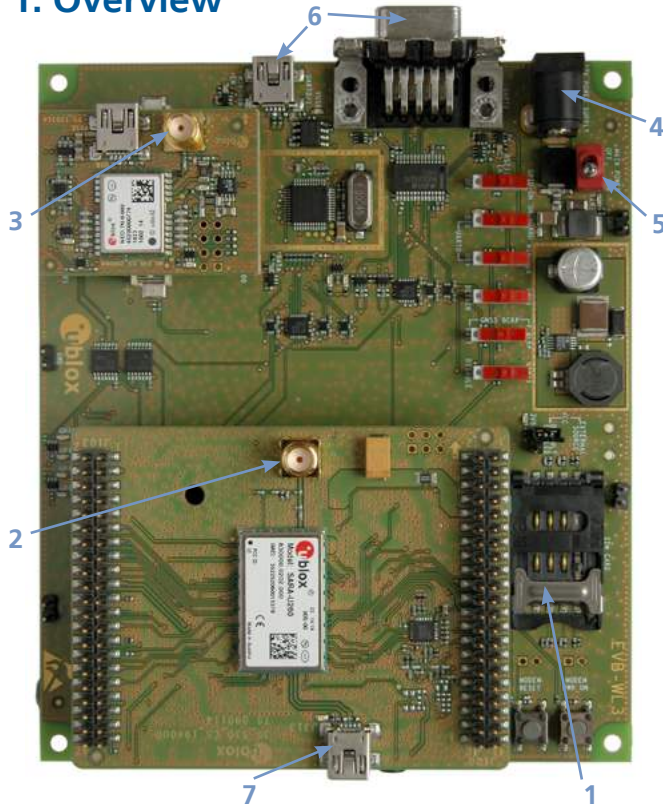


Quick Start EVK-U2x



1. Overview



2. Setup

Download the EVK-U2X software (and documentation) from www.u-blox.com/evk-downloads and install the software. See installation notes on back of card.

1. Insert SIM card in **SIM card holder**.
2. Connect the cellular antenna with SMA connectors to the **antenna connector** (SMA female).
3. Connect the GNSS antenna to the **GNSS antenna** SMA connector, if GNSS functionality is required.
4. Connect power adapter to **9 – 18 V power input** connector (J400) (+12 V). LED DL401 is blue.
5. To supply power to the board, turn **main power** (SW400) switch to ON position. LED DL400 is green. The module switches on.

Connection for communication via UART:

6. Connect USB cable to **mini USB connector** OR
Connect RS232 cable to **cellular RS232** connector

Connection for communication via USB:

7. Connect USB cable to mini USB connector on the adapter board (**cellular native USB**).

3. Installation

An Internet connection is required.
Supported Windows operating systems:
x86 and x64 versions of Vista, 7, and 8.

Download the latest EVK-U2x drivers
and documents from the u-blox
website:

- Enter this link into your browser:
www.u-blox.com/evk-downloads
- Choose the EVK-U2X kit.
- Choose a package: "Software only"
or "Software and documentation".
- Unzip the downloaded file.
- Go to the Tools folder.
- Run the executable.

4. Interfaces

Two COM ports are enabled with
Windows (the numbering of the ports
can be seen via the Windows De-
vice Manager). The serial port for AT
commands is available over the first
numbered COM port opened by the
driver.

Refer to the EVK-U26/U27 user guide
or the EVK-U20/U23 user guide for a
comprehensive description of the eval-
uation kit features and functionalities.

5. More information

For more information regarding the
EVK-U2x, contact your nearest u-blox
support:

[www.u-blox.com/en/
contact-us-support.html](http://www.u-blox.com/en/contact-us-support.html)