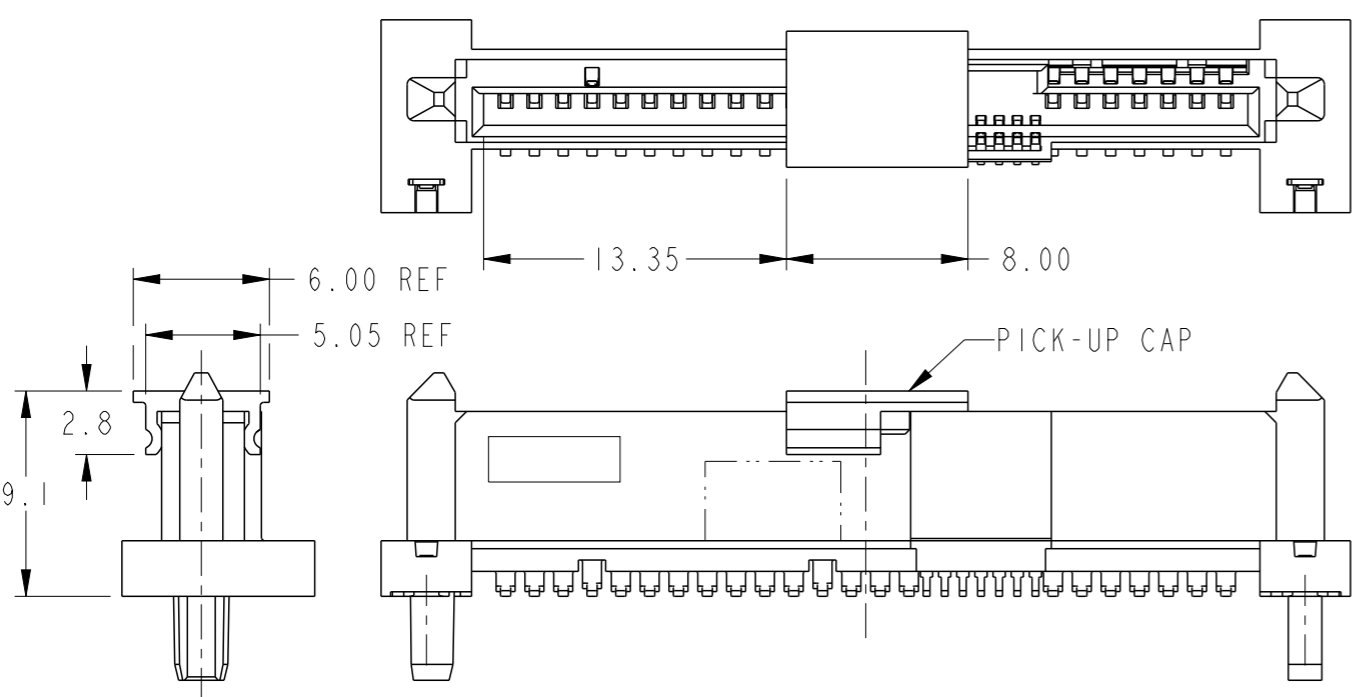
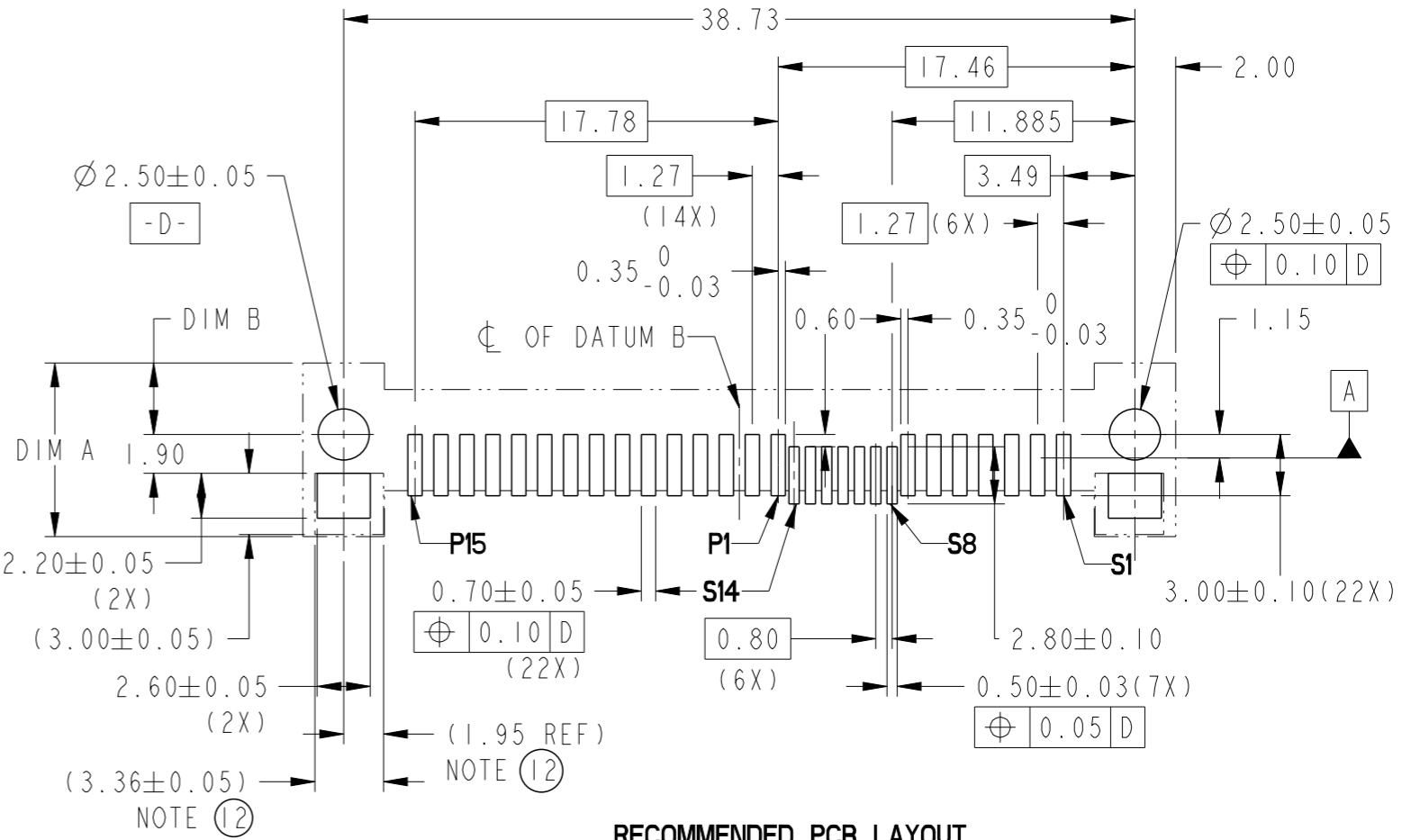


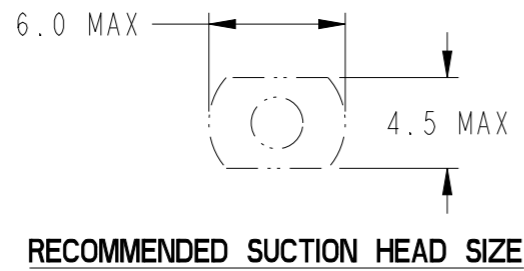
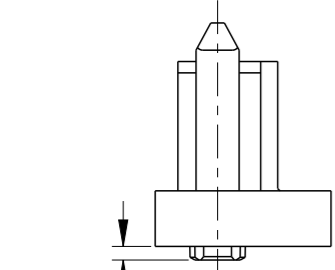
PRODUCT NO	DIM A	DIM B	DIM L	RECOMMENDED P.C. BOARD THICKNESS	PICK-UP CAP	PACKAGING	REMARK
10125549-001LF	8.50	3.50	3.7	4.57mm (0.018")	NO	TRAY	--
10125549-001CLF					YES		
10125549-001C-TRLF					YES	TAPE & REEL	
10125549-002LF	8.50	3.50	2.0	2.54mm (0.100")	NO	TRAY	--
10125549-002CLF					YES		
10125549-002C-TRLF					YES	TAPE & REEL	
10125549-003LF	7.50	2.50	0.6	1.57mm (0.062")	NO	TRAY	--
10125549-003CLF					YES		
10125549-003C-TRLF					YES	TAPE & REEL	



PART WITH PICK-UP CAP, SEE NOTE 5



RECOMMENDED PCB LAYOUT
SCALE 3:1



RECOMMENDED SUCTION HEAD SIZE


spec ref	-	dr	Vajith P-N	2014/12/18	projection	MM	size	A3	scale	3:1
tolerance std	ISO 406 ISO 1101	eng	Guat-Lian Loo	2015/03/23			ecn no	-	product family SAS rel level Released	dwg no 10125549 rev A
surface	ISO 1302	chr	-	2015/03/23			cat. no.	-		
linear	0.X ± 0.XX ±.20 0.XXX ±			SAS RECEPTACLE WIDE BASE SMT TYPE ASSY						
angular	0° ±2°	www.fci.com		PDS: Rev :A		STATUS:Released		Printed: Mar 24, 2015		



Copyright FCI.

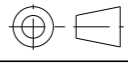



PRODUCT NUMBER
SEE TABLE

NOTES:

1. MATERIAL:
 - 1) HOUSING: HIGH TEMP TERMOPLASTIC, UL 94V-0
COLOR : BLACK
 - 2) TERMINAL: COPPER ALLOY
 - 3) HOLD DOWN: COPPER ALLOY
2. FINISH:
 - 1) TERMINAL: 30μ" Au PLATING (CONTACT POINT)
OVER 50μ" NICKEL
 - 2) SOLDER TAIL: 50μ" MIN Sn OVER 50μ" MIN NICKEL
 - 3) HOLD DOWN: 50μ" MIN Sn OVER 50μ" MIN NICKEL
- ③ THE DIM. IS MEASURED AT P.C. BOARD SITTING PLANE
- ④ PER SEF REV 1.3 EXCEPT 0.8mm PITCH BUMP AREA
5. PART WITH PICK-UP CAP, P/N XXXXXXXX-XXXC_LF
6. THE STD PACKAGING IS IN TRAY
7. THE TAPE & REEL PACKAGING, SUFFIX "-TR" ADDED AFTER
PRODUCT NUMBER (E.G. XXXXXXXX-XXXC-TRLF)
8. THE HOUSING WILL WITHSTAND EXPOSURE TO 260°C PEAK TEMPERATURE
FOR 10 SECONDS IN A CONVECTION, INFRA-RED OR VAPOR PHASE REFLOW
OVEN.
- ⑨ THIS PRODUCT MEETS EUROPEAN UNION DIRECTIVES AND OTHER COUNTRY
REGULATIONS AS DESCRIBED IN GS-47-0004.
- ⑩ PART NUMBERS ENDING IN "LF" MEANS FOR NOTE 8 LEAD FREE IDENTIFICATION
11. A  SYMBOL WILL BE NEXT TO ANY DIMENSION, VIEW, OR NOTE WHICH HAS
BEEN MODIFIED WITH THE CURRENT DRAWING REVISION.
- ⑫ THE GROUND PAD SIZES SHOWN IN () IS THE COMPETITOR DESIGN FOR REF.
- ⑬ DATE CODE LOCATION. DATE CODE NO.YYWW (E.G.14225).
14. CORING AT NON FUNCTIONAL AREAS ARE SUBJECT TO CHANGE WITHOUT NOTICES.



Copyright FCI.

spec ref -		dr	Vajith P-N	2014/12/18	projection	MM	size	A3	scale	3:1
tolerance std		TOLERANCES UNLESS OTHERWISE SPECIFIED					ecn no -		rel level Released	
ISO 406 ISO 1101		eng	Guat-Lian Loo	2015/03/23			product family SAS			
surface		linear	0.X	±-		SAS RECEPTACLE WIDE BASE SMT TYPE ASSY	dwg no 10125549	rev		A
			0.XX	±.20						
		angular	0°	±2°				www.fci.com	cat. no.	-