

6

5

4

3

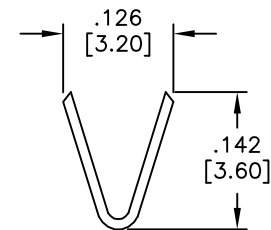
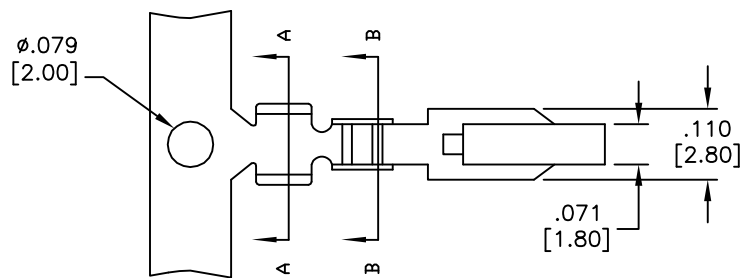
2

1

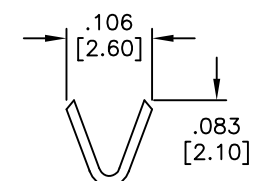
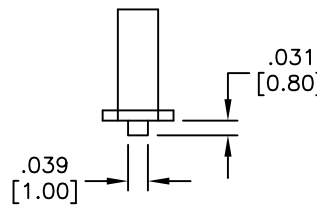
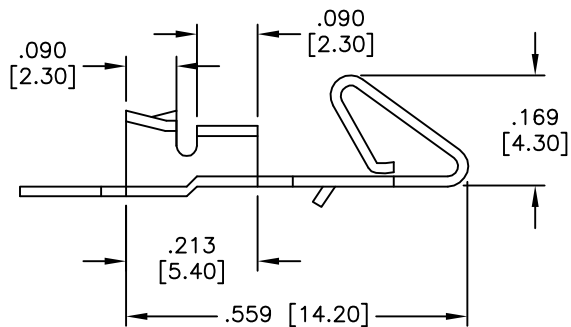
APPROVED: \_\_\_\_\_

DATE: \_\_\_\_\_ TITLE: \_\_\_\_\_

Rev	AWO #	Description	Date	Appr
-		RELEASED	4/12/05	
A		UPDATE DRAWING	12/17/15	AY/LL
B		UPDATE DIM.	7/22/19	AY/YC



SECTION A-A



SECTION B-B

Packaging:  
 B = 1,000 pieces loose cut  
 R = 6,000 pieces on reel

SPECIFICATIONS:  
 Material:  
 Contact: Brass  
 Plating:  
 Tin over Copper underplate overall  
 Electrical:  
 Wire Range: (18-26) AWG  
 Max Insulation:  $\phi 0.098 [2.50\text{mm}]$   
 Use with MTB-XX Housing  
 Environmental:  
 Lead free, RoHS compliant



UNLESS OTHERWISE SPECIFIED ALL DIMENSIONS ARE INCHES [MM] TOLERANCES: EXCEPT AS NOTED	
INCHES	HOLES
.X ± .10	∅X ± .10
.XX ± .020	∅XX ± .015
.XXX ± .015	∅XXX ± .010
APPROVALS	
DRAWN	DATE
SS	4/12/05
CHECKED	
APPROVED	

**ADAM TECH INTERCONNECTS**  
 909 Rahway Avenue,  
 Union, NJ 07083  
 Phone: 908-687-5000  
 Fax: 908-687-5710

TITLE		CRIMP CONTACT	
SIZE	PART NO.	REV.	
X	MTB-C-X	B	
REF: S00016T	SCALE: NTS	SHEET 1 OF 1	

6

5

4

3

2

1