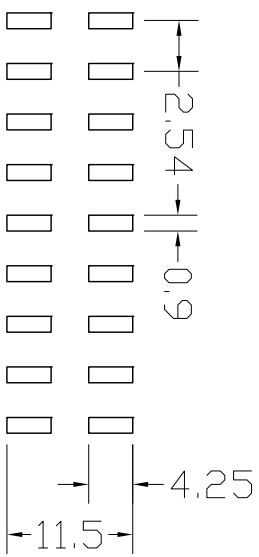
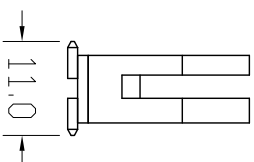
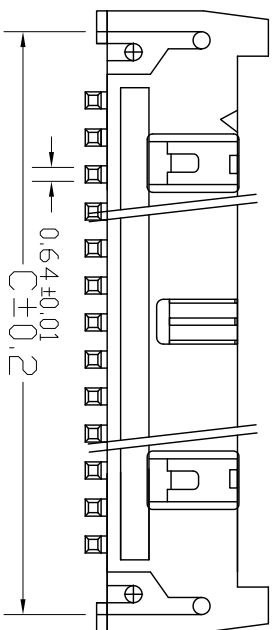
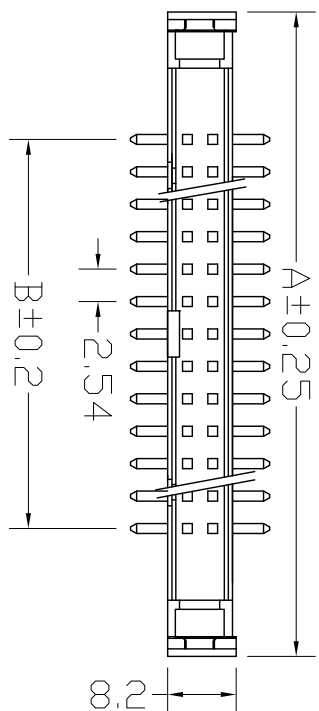


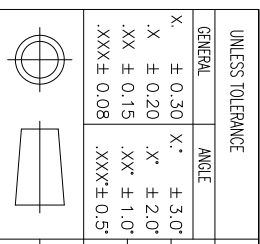
RoHS



NOTES:
 Insulator Material: PBT, UL 94V-0
 Contact Plating: TIN, 80-100 μ "
 Contact Material: Brass
 Current Rating : 1A AC,DC
 Contact Resistance: 20M Ω Max.
 Dielectric Withstanding: AC 500V
 Insulator Resistance: 1000M Ω Min.
 Operating Temp.: -40°C~+105°C

NUMBER OF POSITIONS	DIMENSIONS		
	A	B	C
06	26.92	5.08	22.86
08	29.46	7.62	25.40
10	32.00	10.16	27.94
12	34.54	12.70	30.48
14	37.08	15.24	33.02
16	39.62	17.78	35.56
20	44.70	22.86	40.64
24	49.78	27.94	45.72
26	52.32	30.48	48.26
30	57.40	35.56	53.34
34	62.48	40.64	58.42
40	70.10	48.26	66.04
50	82.80	60.96	78.74
60	95.50	73.66	91.44
64	100.58	78.74	96.52

UNLESS TOLERANCE	
GENERAL	ANGLE
X. ± 0.30	X.° ± 3.0°
.X ± 0.20	.X° ± 2.0°
.XX ± 0.15	.XX° ± 1.0°
.XXX ± 0.08	.XXX° ± 0.5°



DRAW BY	
DESIGN BY	
CHECK BY	
APPROVE BY	
SCALE	1:1
SHEET	1/1
UNIT	MM

CnC Tech,LLC

Part No.
3010-XX-003-11-99

Draw No: _____ Rev: A