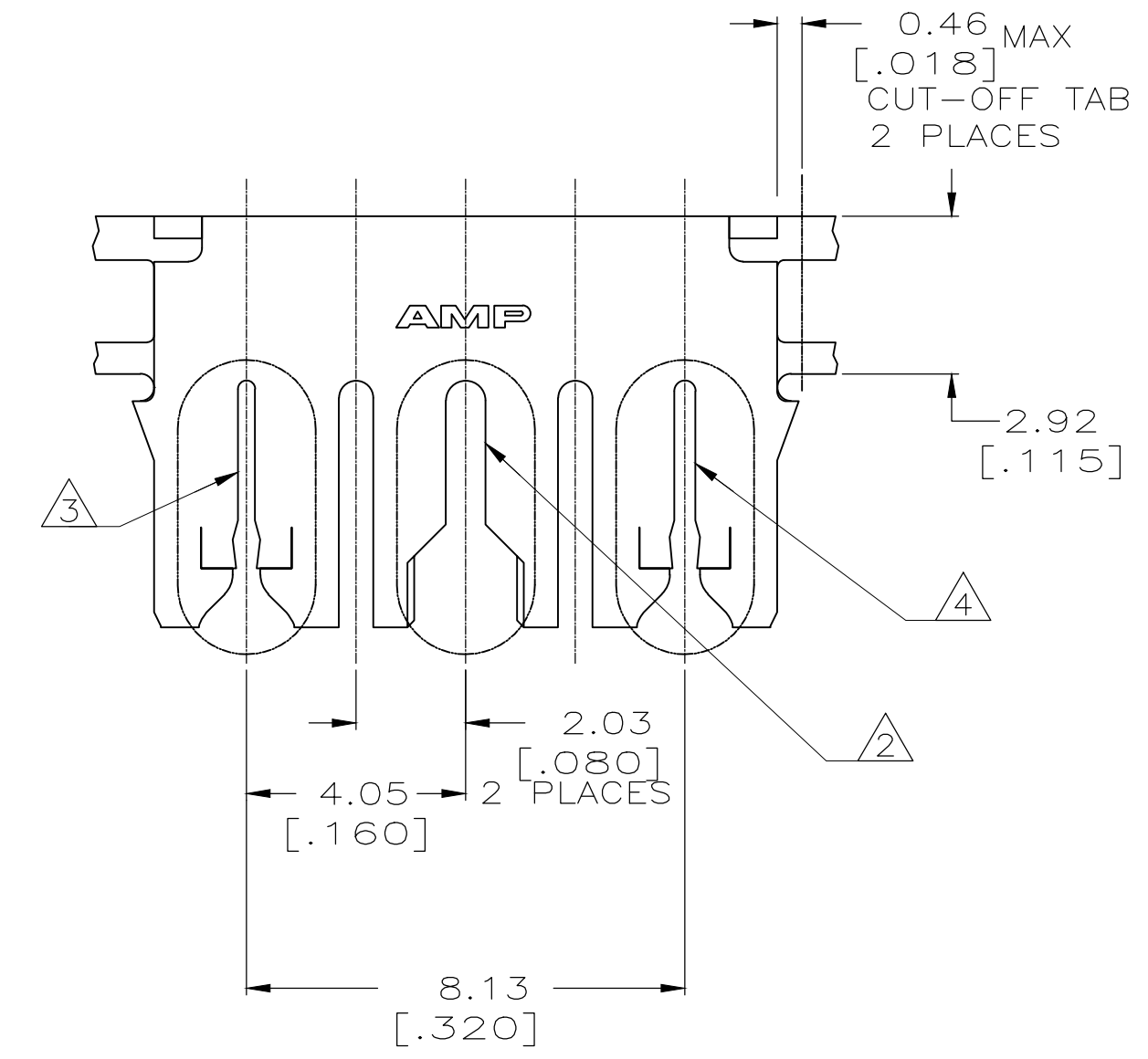
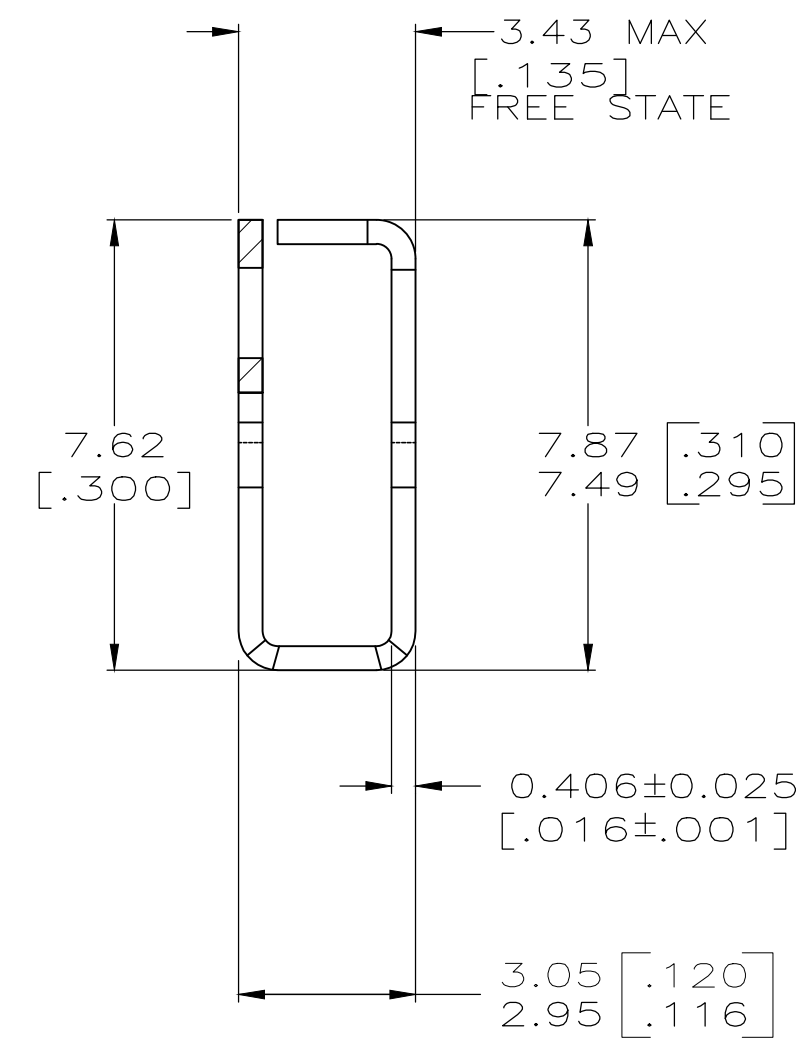
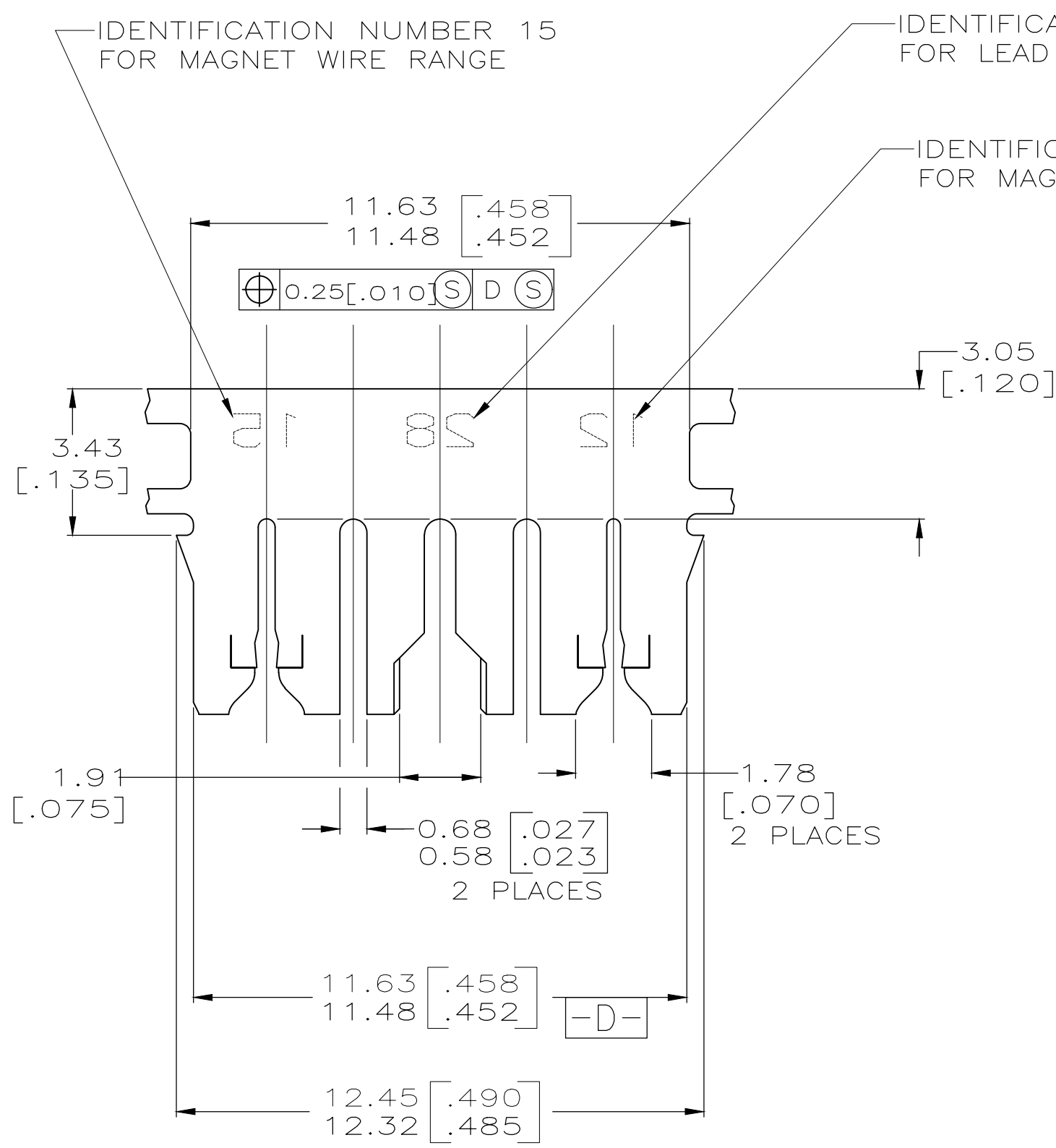
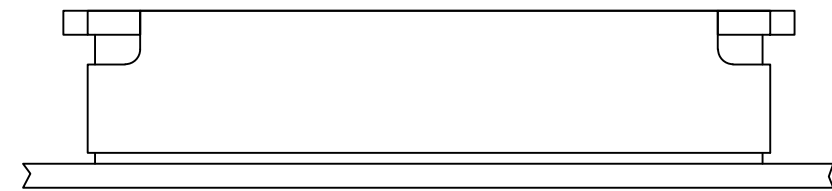


THIS DRAWING IS UNPUBLISHED. RELEASED FOR PUBLICATION  
 © COPYRIGHT - By - ALL RIGHTS RESERVED.

| LOC |     | DIST        |                           | REVISIONS |     |      |  |
|-----|-----|-------------|---------------------------|-----------|-----|------|--|
| P   | LTR | DESCRIPTION |                           | DATE      | DWN | APVD |  |
| AF  | 50  | C2          | REVISED PER ECR-18-006427 | 11MAY2018 | BW  | SV   |  |

- 5 MTA PRODUCT SPEC IS 108-1051  
MAG-MATE PRODUCT SPEC IS 108-2012
- 6 MAG-MATE APPLICATION SPEC IS 114-2046  
MTA APPLICATION SPEC IS 114-1020
- 7 TERMINALS ARE STRESS RELIEVED

- 1 CONTINUOUS STRIP ON REELS WITH TERMINALS LOCATED ON 13.97±0.08 [.550±.003] CENTERS.
- 2 SLOT TERMINATES A SINGLE 0.8-0.9mm<sup>2</sup> [#18] AWG TIN PLATED SOLID, FUSED STRANDED OR STRANDED (7, 16, OR 19 STRANDS) WIRE WITH PET INSULATION, 2.03[.080] MAX DIA.
- 3 SLOT ACCEPTS 0.45-0.64mm [#25-#22] AWG COPPER MAGNET WIRE. SINGLE OR DOUBLE WIRE OF THE SAME SIZE AND TYPE. EXCEPT 0.64mm [#22] AWG WHICH IS FOR ONE WIRE ONLY.  
  
ALUMINIUM RANGE IS 0.57-0.72mm [#23-#21] AWG SINGLE WIRE ONLY  
ALUMINIUM WIRE RANGE IS APPLICABLE FOR POST TIN PLATED PART NOS ONLY.
- 4 SLOT ACCEPTS 0.54-0.81mm [#23.5-#20] AWG COPPER MAGNET WIRE. 2 WIRES OF THE SAME SIZE AND TYPE PER SLOT. EXCEPT 0.64-0.81 [#22-#20] AWG WHICH IS ONE WIRE ONLY.  
  
ALUMINIUM RANGE IS 0.72-0.91mm [#21-#19] AWG SINGLE WIRE ONLY  
ALUMINIUM WIRE RANGE IS APPLICABLE FOR POST TIN PLATED PART NOS ONLY.



1217209-1  
PART NUMBER

|  |  |                                    |   |               |
|--|--|------------------------------------|---|---------------|
| THIS DRAWING IS A CONTROLLED DOCUMENT.   |  | DWN 13SEP1999<br>MICHAEL S. FEHER  | TE Connectivity                                       |               |
| DIMENSIONS: INCHES   |  | CHK 22SEP1999<br>KURT A. RANDOLPH  |   |               |
| TOLERANCES UNLESS OTHERWISE SPECIFIED:   |  | APVD 22SEP1999<br>KURT A. RANDOLPH | NAME  |               |
| 0 PLC ± -<br>1 PLC ± -<br>2 PLC ± 0.25[.010]<br>3 PLC ± -<br>4 PLC ± -<br>ANGLES ± - |  | PRODUCT SPEC                       | TERMINAL, SPLICE, TRI-SLOT, 300 SERIES, MTA/MAG-MATE™ |               |
| MATERIAL BRASS   |  | FINISH TIN PLATE                   | APPLIC. SPEC  | RESTRICTED TO |
|  |  | WEIGHT                             | 96-1039-143   |               |
|  |  | CUSTOMER DRAWING                   | SIZE A2   |               |
|  |  |                                    | CAGE CODE 00779                                       |               |
|  |  |                                    | DRAWING NO. C=1217209                                 |               |
|  |  |                                    | SCALE 8:1   |               |
|  |  |                                    | SHEET 1 OF 1  |               |
|  |  |                                    | REV C2  |               |