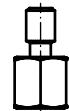
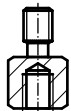
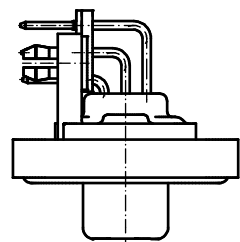
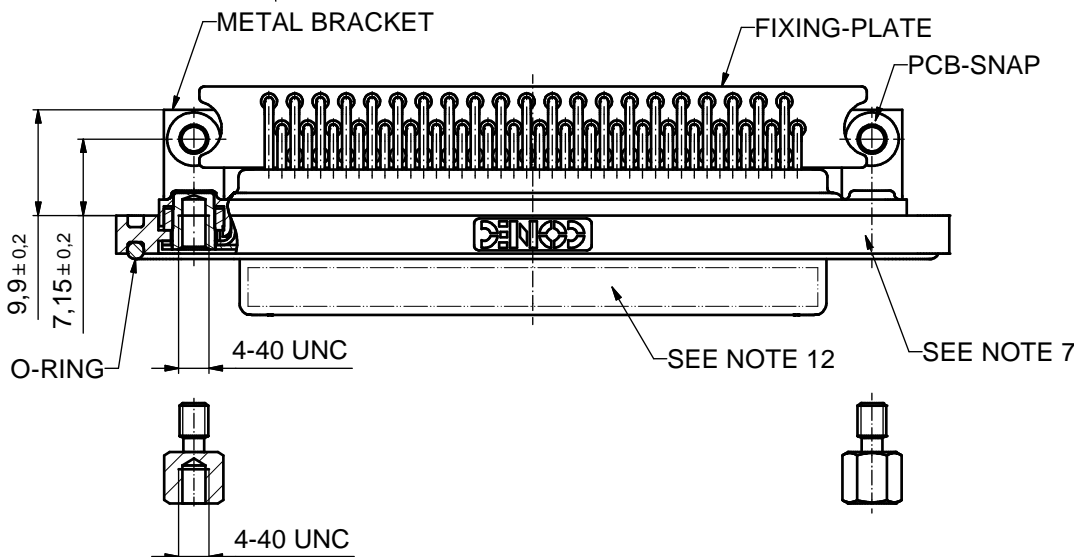
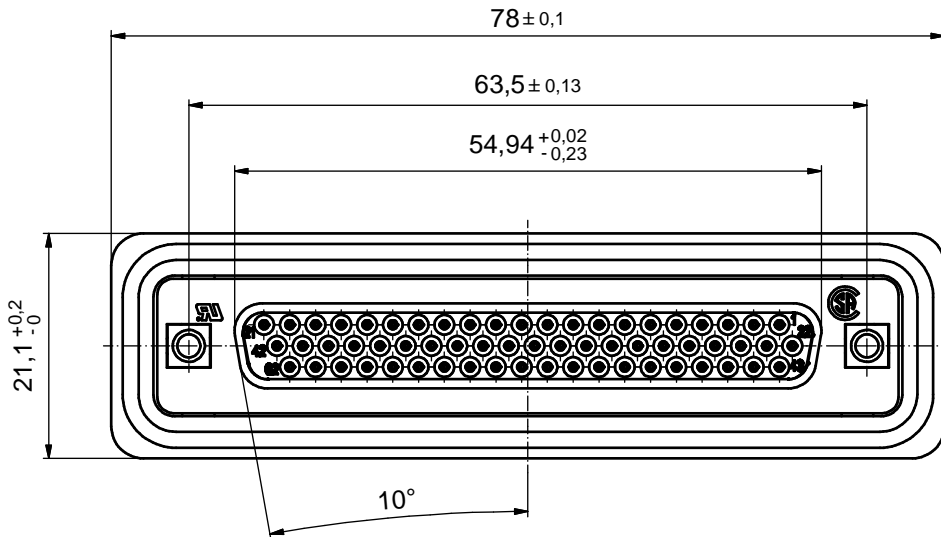
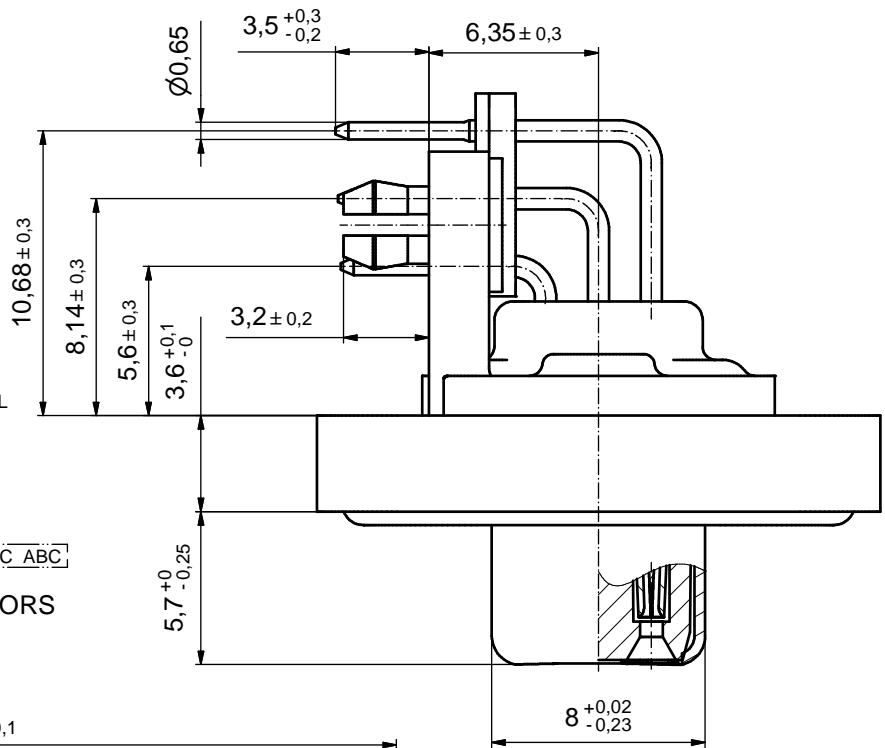


NOTES:

1. METAL SHELLS: COPPER ALLOY; min. 315µin TIN over 40-80µin NICKEL
2. INSULATORS: PBT GF UL 94 V-0, BLACK
3. SIGNAL CONTACTS: COPPER ALLOY
PLATING: 8µin HARD GOLD over min. 50µin NICKEL
4. METAL BRACKET: ZINC DIE CAST; 300µin COPPER/ 40-120µin NICKEL/120-200µin TIN
5. THREADED INSERT: COPPER ALLOY; min. 200µin TIN over 80µin NICKEL
6. HEXLOCKING SCREW: STAINLESS STEEL
7. FRAME: ZINC DIE CAST; NICKEL PLATED
8. FIXING-PLATE: PBT GF UL 94 V-0; BLACK
9. PCB-SNAP: COPPER ALLOY; min. 200µin TIN over 80µin NICKEL
PCB-HOLE: $\phi 3.1 \pm 0.1$; PCB THICKNESS 1.6mm
10. PCB HOLE DRILLINGS ON SHEET 2
11. RECOMMENDED TORQUE FOR MOUNTING SCREW 35N cm (3.1 in.LB) / max. 40 Ncm (3.5 in.LB)
12. CONNECTOR IS PART MARKED: 6HDD62SAY99R40X CONEC ABC

AT ALL TIMES WATER RESISTANT CONNECTORS NOT IN USE SHOULD BE COVERED WITH A CONEC WATER RESISTANT CAP OR WATER TIGHT HOOD.

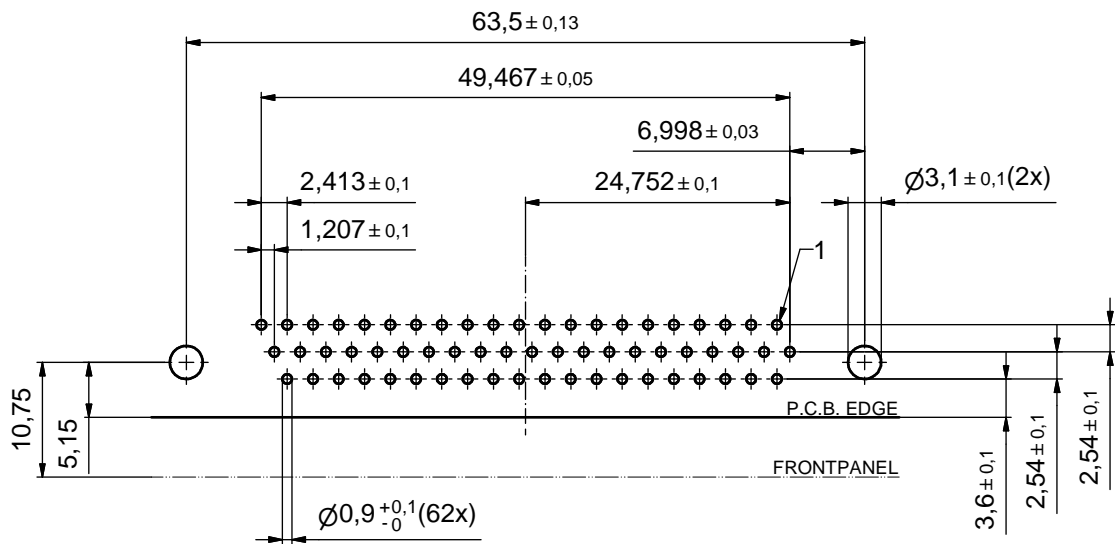


APPROVAL # FREIGABE # DEBLOCAGE # AUTORIZACION # APPROVAL	
CUSTOMER APPROVAL DATE:	
NAME:	TITLE:
COMPANY NAME:	
APPROVAL # FREIGABE # DEBLOCAGE # AUTORIZACION # APPROVAL	

THIS DRAWING MAY NOT BE COPIED OR REPRODUCED IN ANY WAY, AND MAY NOT BE PASSED ON TO A THIRD PARTY WITHOUT WRITTEN PERMISSION. OWNERSHIP AND COPYRIGHT OF CONEC GmbH			
DO NOT ALTER CAD DRAWING BY HAND			
rev.	description	date	name
a	Origin		

tolerance	ISO 2768-m											
dim. in mm	<table border="1"> <tr> <td>date</td> <td>name</td> </tr> <tr> <td>drawn: 12.03.2008</td> <td>Sonnenberg</td> </tr> <tr> <td>appd.: 12.03.2008</td> <td>Mickenbecker</td> </tr> <tr> <td>norm</td> <td></td> </tr> <tr> <td>d-old</td> <td></td> </tr> </table>		date	name	drawn: 12.03.2008	Sonnenberg	appd.: 12.03.2008	Mickenbecker	norm		d-old	
date	name											
drawn: 12.03.2008	Sonnenberg											
appd.: 12.03.2008	Mickenbecker											
norm												
d-old												
CONEC												

scale:	2:1 (5:1)	
material:	SEE NOTES	
title:	D-SUB HD FEMALE 90° 62pos. SOLDER PIN ANGLED threaded insert, metal bracket, fixing plate and snap	
dwg no:	Inventor 10	DIN-A3
	18K1A690	sh: 1
part no:	6HDD62SAY99R40X	



APPROVAL # FREIGABE # DEBLOCAGE # AUTORIZACION # APPROVAL	
CUSTOMER APPROVAL DATE:	
NAME:	TITLE:
COMPANY NAME:	
APPROVAL # FREIGABE # DEBLOCAGE # AUTORIZACION # APPROVAL	

THIS DRAWING MAY NOT BE COPIED OR REPRODUCED IN ANY WAY, AND MAY NOT BE PASSED ON TO A THIRD PARTY WITHOUT WRITTEN PERMISSION. OWNERSHIP AND COPYRIGHT OF CONEC GmbH

DO NOT ALTER CAD DRAWING BY HAND

rev.	description	date	name
a	Origin		

tolerance ISO 2768-m		dim. in mm	
drawn	12.03.2008	Sonnenberg	
appd.	12.03.2008	Mickenbecker	
norm			
d-old			

CONEC

scale:	2:1		
material:	SEE SHEET 1		
title:	P.C.B. HOLE DRILLINGS D-SUB HD FEMALE 90° 62pos. thread insert, metal bracket, fixing-plate, hex bolt and snap		
dwg no:	Inventor 10	DIN-A3	
	18K1A690	sh: 2	
part no:	SEE SHEET 1		