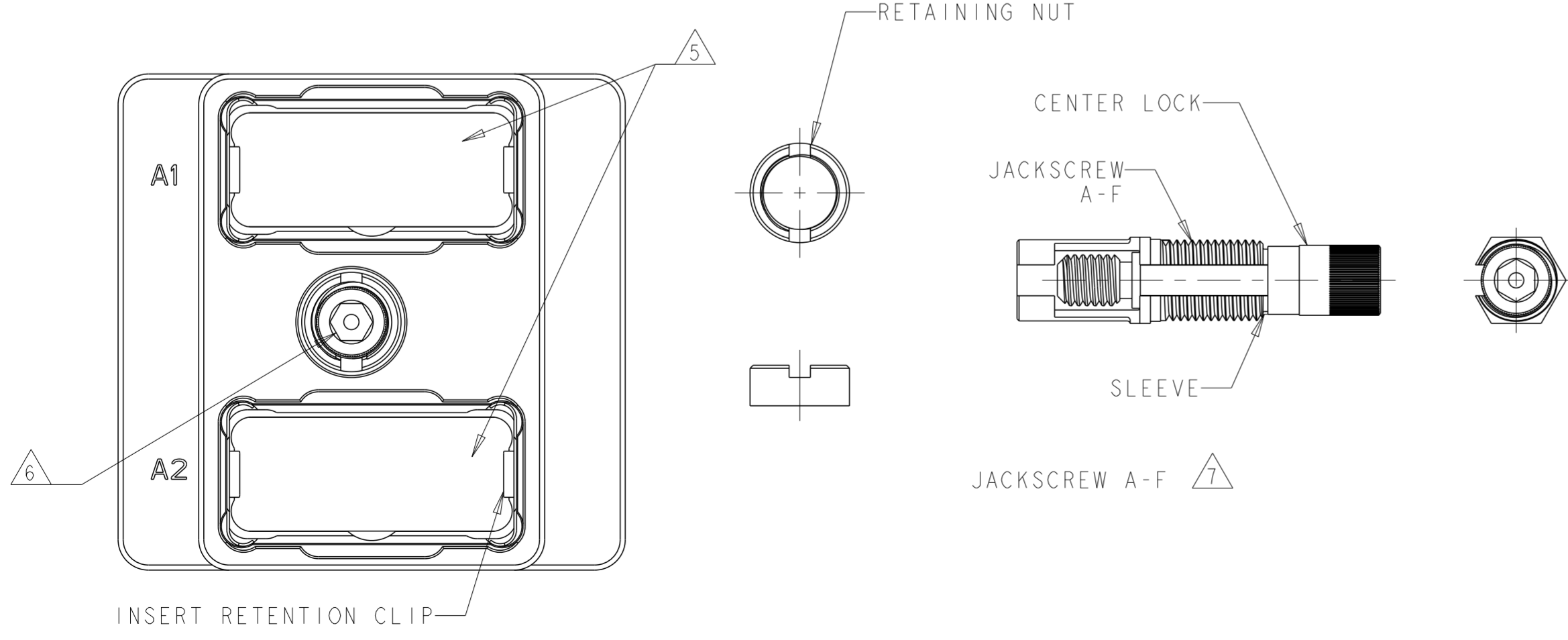
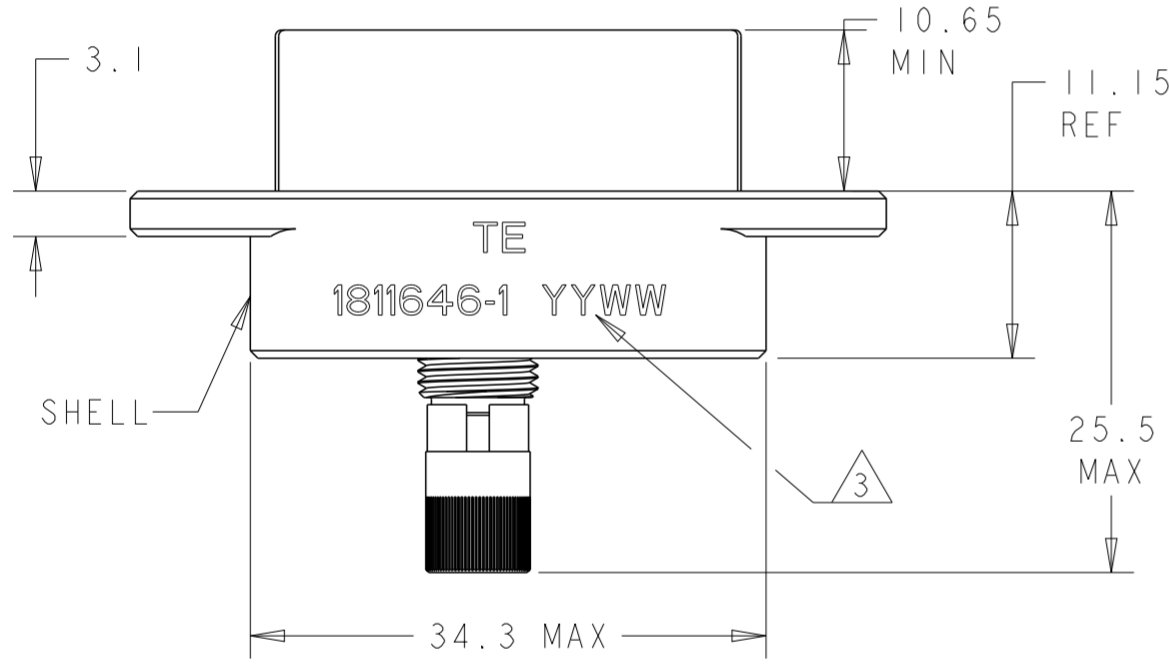
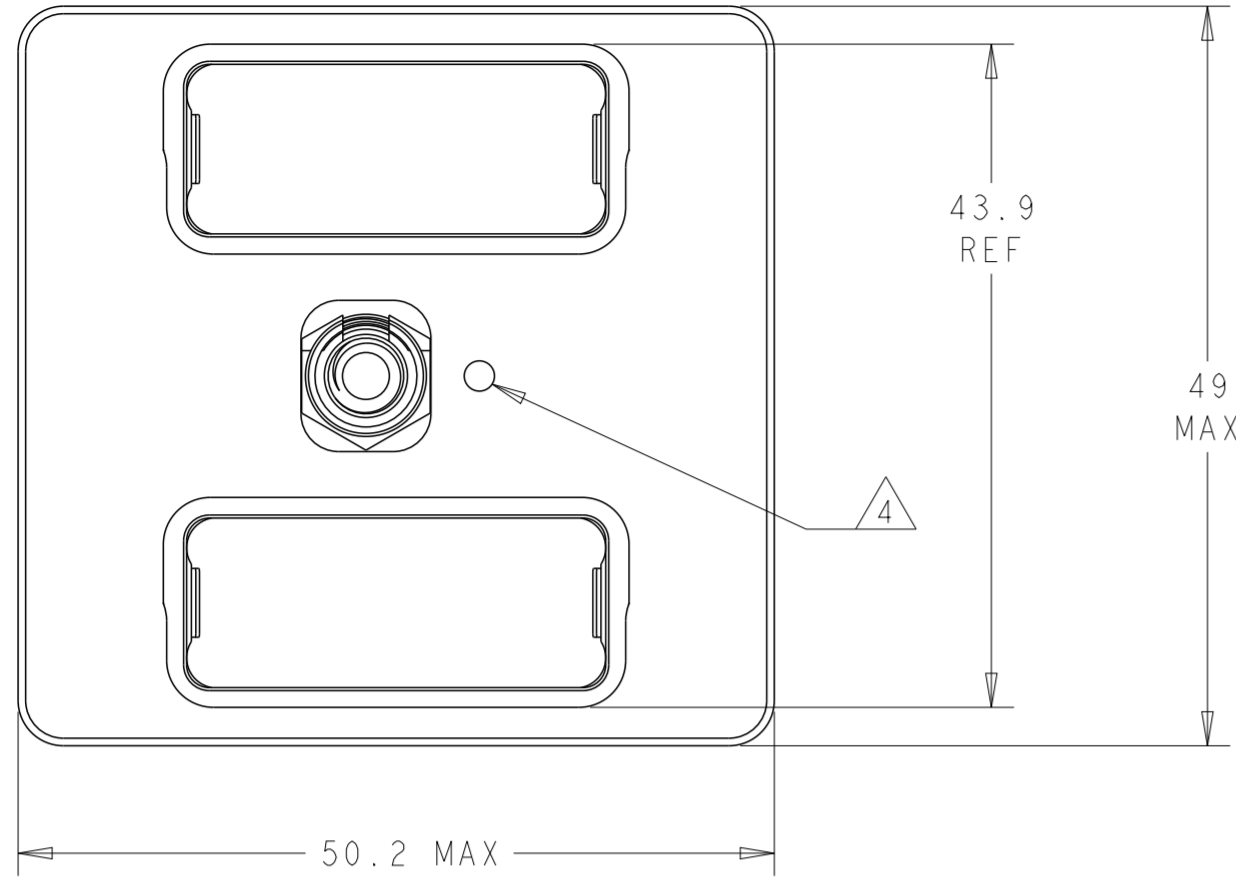


THIS DRAWING IS UNPUBLISHED. RELEASED FOR PUBLICATION 20
 © COPYRIGHT 20 BY - ALL RIGHTS RESERVED.

REVISIONS				
P	LTR	DESCRIPTION	DATE	APVD
D		REVISED PER ECO-14-016549	17NOV14	MGM CT



- 1 SHELL: ALUMINUM ALLOY 6061 T651
INSERT RETENTION CLIP & JACKSCREW SLEEVE: COPPER ALLOY PER ASTM B194
JACKSCREW KEY, CENTER LOCK, & RETAINING NUT: STAINLESS STEEL PER AISI 316
- 2 SHELL: ELECTROLESS NICKEL PER SAE AMS-C-26074, CLASS 1
- 3 DATE CODE - YEAR & WEEK (YY WW)
- 4 INDEXING POINT FOR POLARIZATION
- 5 SHELL CAVITIES FOR GPRB SERIES INSERTS WITH KEYING CODE A
- 6 HEX KEY SLOT FOR 9/64 ALLEN WRENCH
- 7 THE JACKSCREW & RETAINING NUT ARE PRE-ASSEMBLED TO THE SHELL. THESE ARE SHOWN UNASSEMBLED FOR CLARITY.

1811646-1
PART NUMBER

THIS DRAWING IS A CONTROLLED DOCUMENT.		DWN BW	10AUG05	STE TE Connectivity
DIMENSIONS: mm		CHK JPM	10AUG05	
TOLERANCES UNLESS OTHERWISE SPECIFIED:		APVD JPM	10AUG05	NAME PLUG SHELL ASSEMBLY, VERTICAL, GPRB2
0 PLC ±0.2	1 PLC ±0.2	PRODUCT SPEC	-	SIZE
2 PLC ±0.2	3 PLC ±	APPLICATION SPEC	-	CAGE CODE
4 PLC ±	ANGLES ±	WEIGHT	-	DRAWING NO
FINISH		CUSTOMER DRAWING	SCALE 2:1	SHEET 1 OF 1