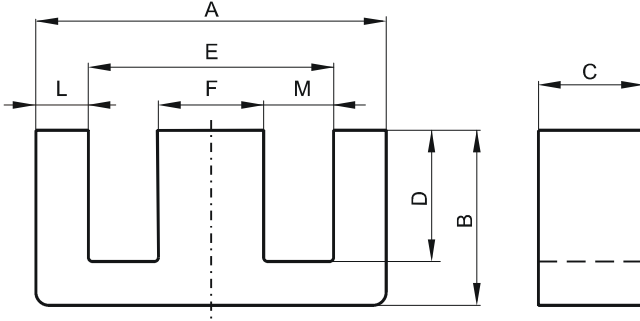


DIMENSIONS



(mm)	Nominal:	Tol. min.:	Tol. max.:
A	100.3	-2.0	+ 2.0
B	59.4	-0.47	+ 0.47
C	27.5	-0.5	+ 0.5
D	46.85	-0.38	+ 0.38
E	72.0 Min.		
F	27.5	-0.5	+ 0.5
L	13.75	-0.38	+ 0.38
M	22.65	-0.5	+ 0.5
Eff. Parameters			
Ae mm²	Amin mm²	le mm	Ve mm³
738.0	692.0	274.0	202000

INDUCTANCE

AL value (nH/T ²)	Test conditions
Nom: 6227 Min.: 4670	10 kHz, < 0.5 mT, 25 °C

MARKING

0R49928EC
PXXXXXXXXX

CORE LOSSES

P _i max	Test conditions
< 24.2 W/set (< 120 mW/cm ³)	100 kHz, 100 mT, 100 °C

NOTE

Spec. modifications	Previous	Revised
2005-06-22	Losses: General R material	Losses: Detail as indicated
2013-07-22	Marking: 0R49928EC PXXXXX	Marking: 0R49928EC PXXXXXXXXX