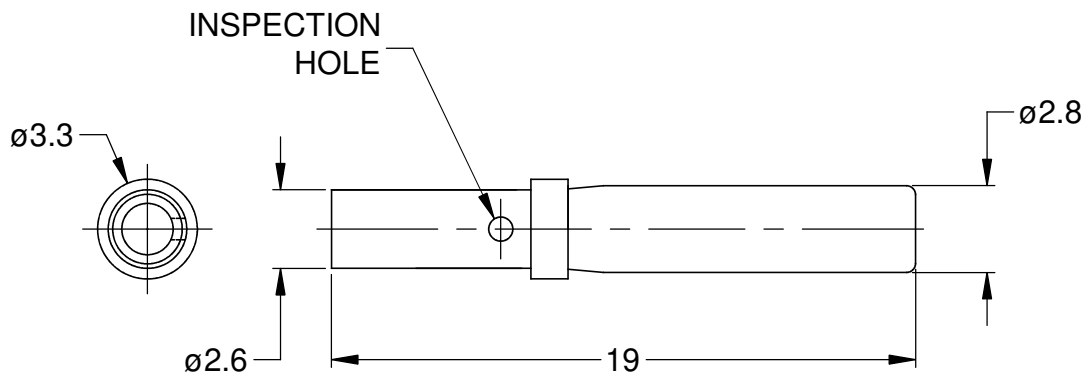
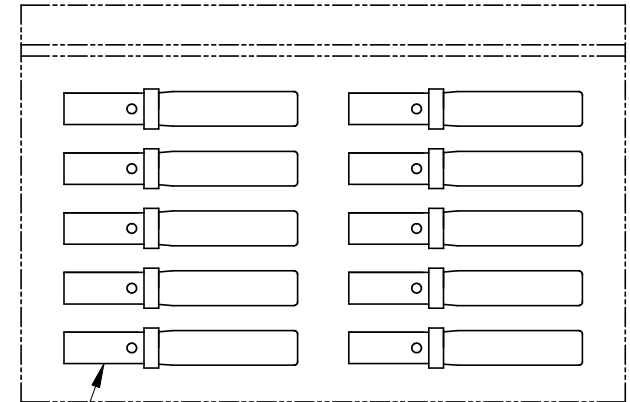


REVISIONS

REV	ECO	DESCRIPTION	DATE	BY	APPR
A	-	RELEASE	10/07/13	DRP	-



REFERENCE DIMENSIONS



KIT CONTENTS

1

NOTES: UNLESS OTHERWISE SPECIFIED

- MATERIAL: COPPER ALLOY; NICKEL PLATED
- CONTACT SIZE: 16
- SPECIFICATIONS:
 - CURRENT RATING: 13 AMPS
 - CONTACT MILLIVOLT DROP: 60 MILLIVOLT DROP @ 13 AMP TEST CURRENT.
 - RoHS COMPLIANT
- RECOMMENDED WIRE RANGE: 16 - 20 AWG
- AVAILABLE HAND CRIMPER: CA-5D12
- ALL DIMENSIONS ARE FOR REFERENCE USE ONLY

10	AT62-201-16141	CONTACT, SOCKET, SOLID, SIZE 16	1								
QUANTITY	MATERIALS LIST		ITEM								
UNLESS OTHERWISE SPECIFIED		<h1 style="text-align: center;">Amphenol</h1> <p style="text-align: center;">Sine Systems - www.amphenol-sine.com 44724 Morley Drive Clinton Township, MI 48036</p> <p style="text-align: center;">KIT, SIZE 16 SOLID SOCKET, 16-20 AWG, AT & AHD-9 SERIES, 10 PCS</p>									
1) All dimensions are in metric(mm).											
2) Tolerances are as follows:											
3) Note reference =											
MATERIAL SPECIFICATIONS:											
PROCESS SPECIFICATIONS:		<table border="1"> <tr> <td>SIZE</td> <td>TYPE</td> <td>DWG NO:</td> <td>REVISION</td> </tr> <tr> <td>A</td> <td>C-</td> <td>AT62-201-16NKIT</td> <td>A</td> </tr> </table>		SIZE	TYPE	DWG NO:	REVISION	A	C-	AT62-201-16NKIT	A
SIZE	TYPE	DWG NO:	REVISION								
A	C-	AT62-201-16NKIT	A								
NEXT ASS'Y:		SCALE: NONE									
		SHEET 1 OF 1									