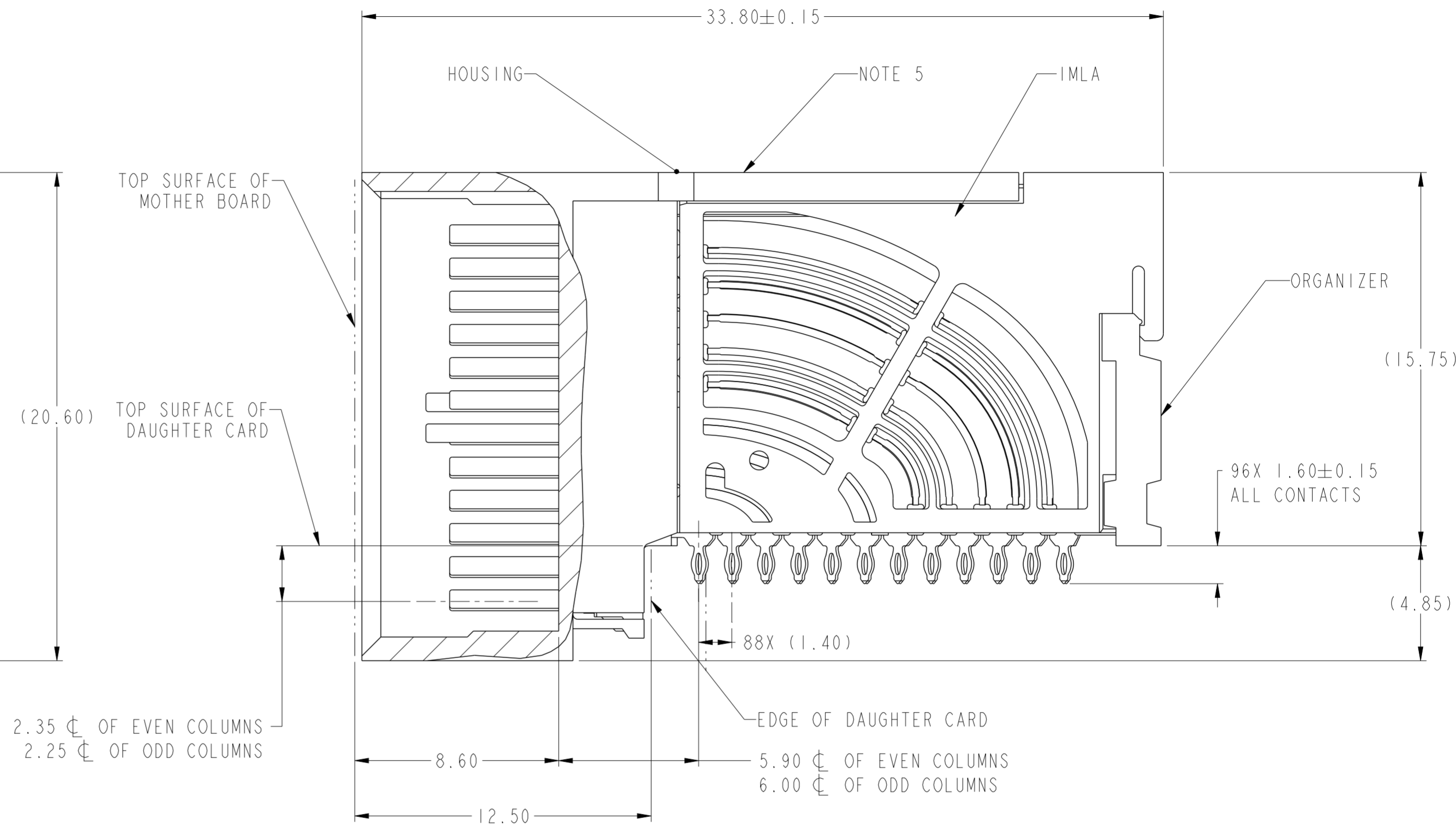
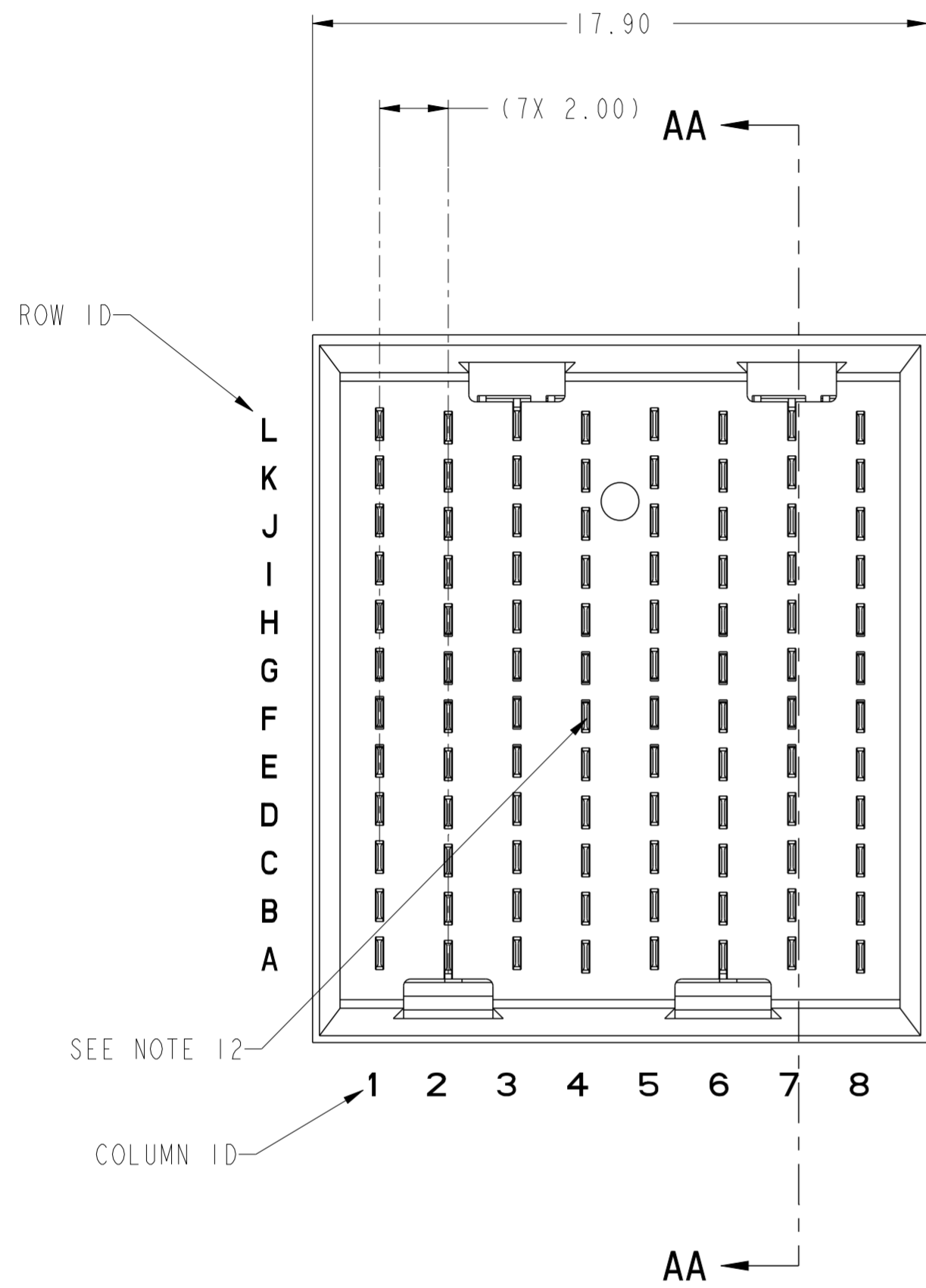


PRODUCT NUMBER  
SEE SHEET 3

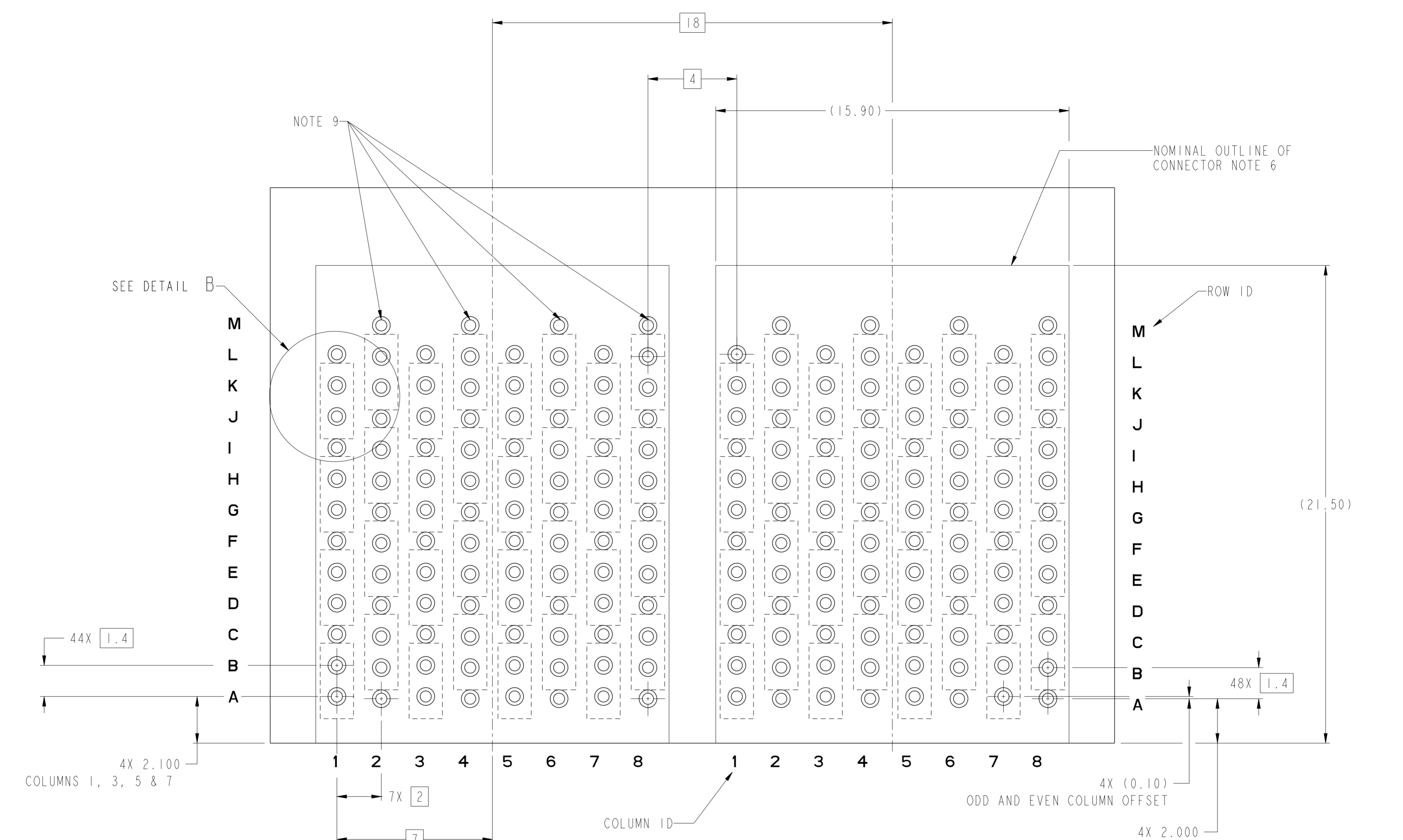


SECTION AA-AA

Amphenol FCI

© 2016 APCI

|                                       |             |       |                       |             |                                   |                 |                        |                       |                    |          |  |
|---------------------------------------|-------------|-------|-----------------------|-------------|-----------------------------------|-----------------|------------------------|-----------------------|--------------------|----------|--|
| spec ref                              | ---         | dr    | Kou Xu                | 2013/06/05  | projection                        | MM              | size                   | A2                    | scale              | 10:1     |  |
| tolerance std                         | ASME Y14.5M | eng   | Terry Luo             | 2020/10/21  |                                   |                 | ecn no                 | ELX-DG-38696-1        |                    |          |  |
| TOLERANCES UNLESS OTHERWISE SPECIFIED |             | chr   |                       |             |                                   |                 | rel level              | Released              |                    |          |  |
|                                       |             | appr  | Heaven Cen 2022/08/23 |             |                                   |                 | product family         |                       |                    |          |  |
| surface                               | linear      | 0.X   | ±.3                   |             | title                             |                 | AirMax VS2 RA HEADER   |                       | dwg no<br>10125530 | rev<br>D |  |
|                                       |             | 0.XX  | ±.15                  |             | 4 Pair, 96 pos, 2 mm, 8 COL, GXT+ |                 | Product - Customer Drw |                       |                    |          |  |
|                                       |             | 0.XXX | ±.050                 |             | cat. no.                          |                 | sheet 1 of 3           |                       |                    |          |  |
|                                       | angular     | 0°    | ±2°                   | PDS: Rev :D |                                   | STATUS:Released |                        | Printed: Nov 29, 2022 |                    |          |  |

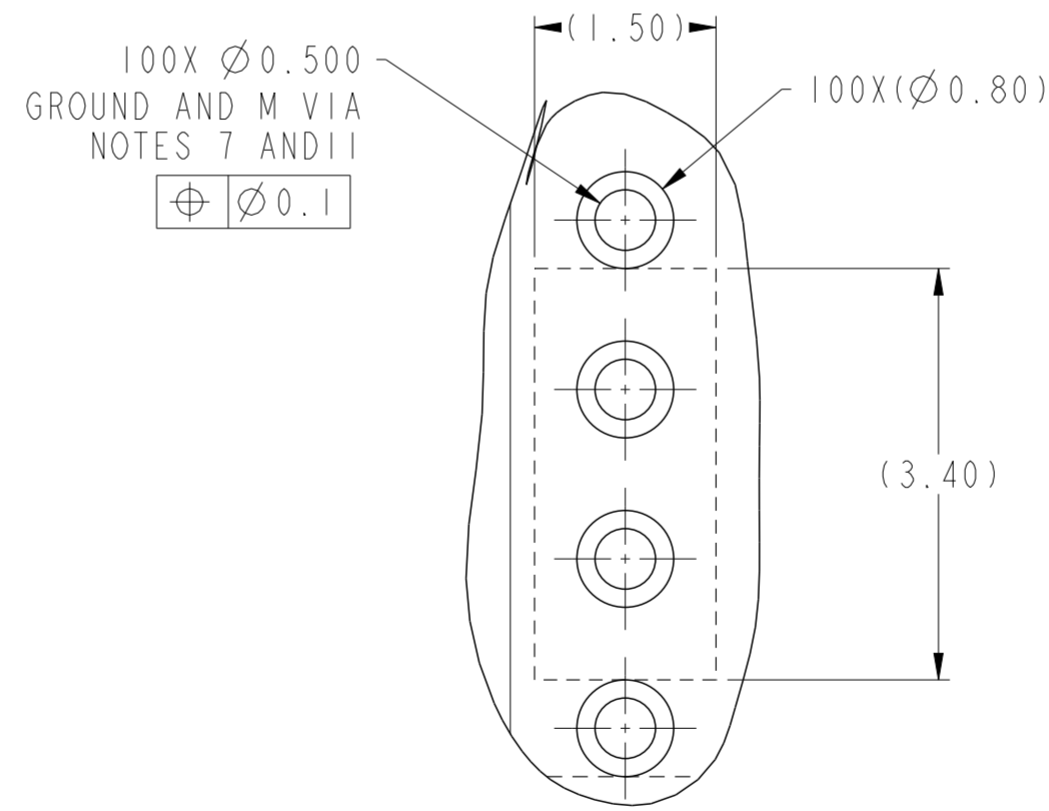
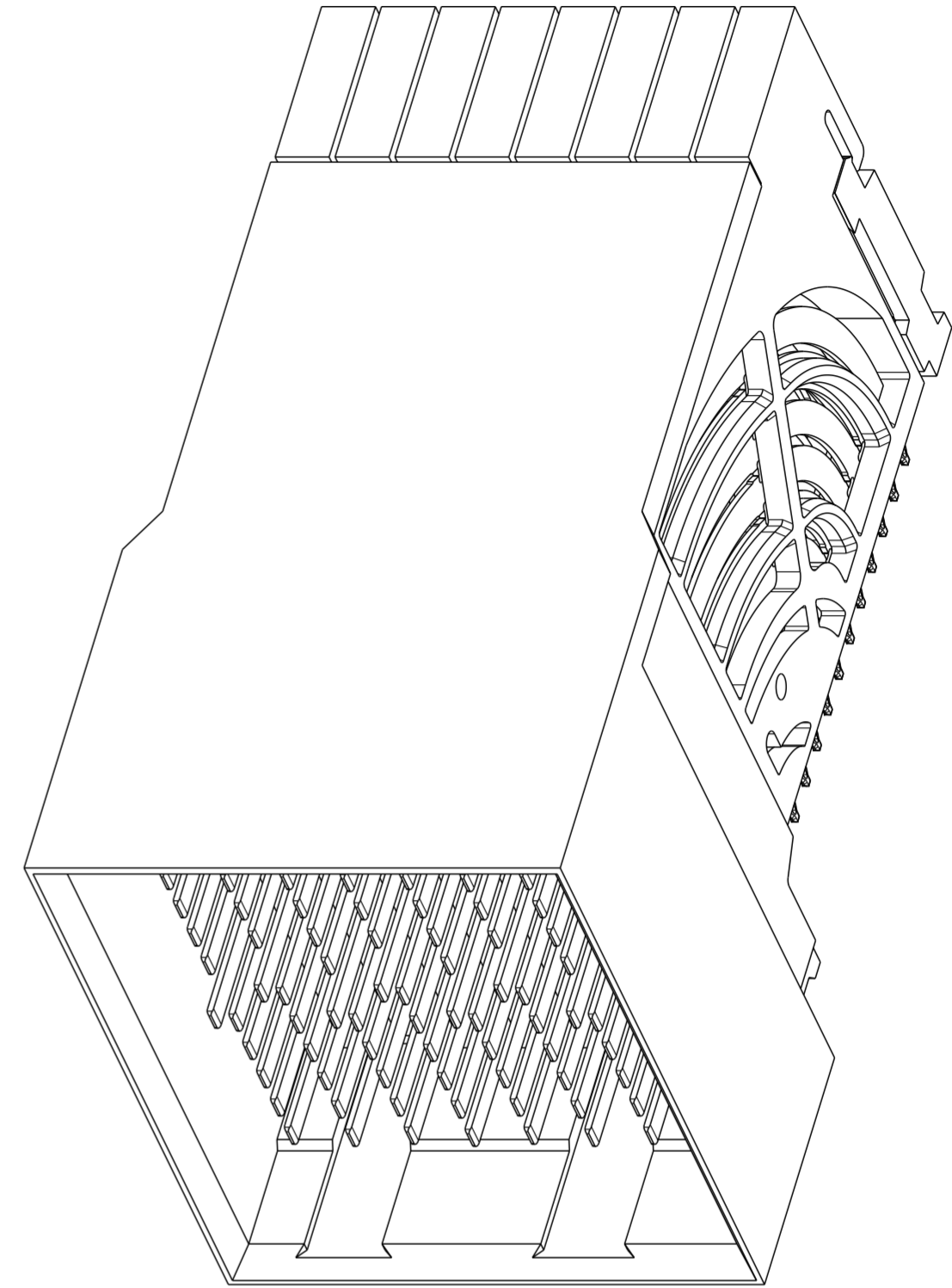


RECOMMENDED PCB LAYOUT  
FOR DIFFERENTIAL APPLICATIONS  
COMPONENT SIDE  
(TWO ADJACENT FOOTPRINTS SHOWN)  
NOTES 7 & 11  
SCALE 8:1

|                                       |                                     |                                   |            |            |                        |                      |                |                |          |     |
|---------------------------------------|-------------------------------------|-----------------------------------|------------|------------|------------------------|----------------------|----------------|----------------|----------|-----|
| spec ref                              | ---                                 | dr                                | Kou Xu     | 2013/06/05 | projection             | MM                   | size           | A2             | scale    | 8:1 |
| tolerance std                         | ASME Y14.5M                         | eng                               | Terry Luo  | 2020/10/21 |                        |                      | ecn no         | ELX-DG-38696-1 |          |     |
| TOLERANCES UNLESS OTHERWISE SPECIFIED |                                     | chr                               | -          | rel level  |                        |                      | Released       |                |          |     |
| surface                               | -                                   | appr                              | Heaven Cen | 2022/08/23 |                        |                      | product family | -              |          |     |
| linear                                | 0.X ±.3<br>0.XX ±.15<br>0.XXX ±.050 | Amphenol<br>FCi                   |            | title      |                        | AirMax VS2 RA HEADER |                | dwg no         | 10125530 |     |
| angular                               | 0° ±2°                              | 4 Pair, 96 pos, 2 mm, 8 COL, GXT+ |            | cat. no.   | Product - Customer Drw |                      | rev            | D              |          |     |

| PRODUCT NUMBER | PRESS-FIT TAIL PLATING TYPE | SHORT DETECT CONTACT | REMARKS                            |
|----------------|-----------------------------|----------------------|------------------------------------|
| 10125530-101   | TIN/LEAD ALLOY OVER NICKEL  | NO                   | 1-SIDE PLATING<br>CUSTOMER SPECIAL |
| 10125530-101LF | TIN OVER NICKEL (LEAD FREE) |                      |                                    |
| 10125530-102   | TIN/LEAD ALLOY OVER NICKEL  | NO                   | 2-SIDES PLATING                    |
| 10125530-102LF | TIN OVER NICKEL (LEAD FREE) |                      |                                    |
| 10125530-112LF | TIN OVER NICKEL (LEAD FREE) | YES<br>(SEE NOTE 12) |                                    |

- 1 - CONNECTOR MATERIALS:  
HOUSING: HIGH TEMP THERMOPLASTIC, NATURAL, UL94-V0  
IMLA PLASTIC: HIGH TEMP THERMOPLASTIC, BLACK, UL94-V0  
CONTACT: COPPER ALLOY  
ORGANIZER: HIGH TEMP THERMOPLASTIC, NATURAL, UL94-V0
- 2 - CONTACT PLATING:  
SEPARABLE INTERFACE:  
PERFORMANCE-BASED PLATING, QUALIFIED TO MEET THE REQUIREMENTS OF FCI PRODUCT SPECIFICATION GS-12-0956 INCLUDING TELCORDIA GR-1217-CORE (NOVEMBER 1995) CENTRAL OFFICE TEST SEQUENCE
- PRESS-FIT TAILS: SEE TABLE
- 3 - PRODUCT SPECIFICATION: GS-12-0956
- 4 - APPLICATION SPECIFICATION: GS-20-0305
- 5 - PRODUCT MARKING, (PROTOTYPE, PART NUMBER & LOT CODE), ON THIS SURFACE.
- 6 - CONNECTOR OUTLINE MAY BE SCREEN PRINTED ONTO CUSTOMER PCB TO BE USED AS A GUIDE FOR CONNECTOR PLACEMENT.
- 7 - REFER TO CUSTOMER DRAWING 10104444 FOR INFORMATION ON PCB HOLE DIAMETERS AND PLATING OPTIONS
- 8 - LEAD FREE PRODUCT MEETS THE EUROPEAN UNION DIRECTIVES & OTHER COUNTRY REGULATIONS AS DESCRIBED IN GS-22-008
- 9 - THESE OUTER VIAS (M) ARE OPTIONAL. WHILE NO CONNECTOR EONS ARE PRESSED INTO THESE HOLES WE RECCOMEND (Ø0.500) FINISHED HOLES AT THESE LOCATIONS TO PROVIDE GROUND SYMMETRY THROUGH THE PCB.
- 10 - PACKAGING MEETS GS-14-920 LEAD FREE LABELING SPECIFICATION.
- 11 - GROUND CONTACTS (C, F, I & L IN ODD COLUMNS AND A, D, G & J IN EVEN COLUMNS) REQUIRE (Ø0.50) FINISHED HOLES. SIGNAL LOCATIONS REQUIRE (Ø0.50) FINISHED HOLES
- 12 - MATING PIN F4 HAS 0.5mm LESS NOMINAL WIPE THAN THE SHORTEST PIN.



DETAIL B  
SCALE 16:1

10125530-101 OR -101LF

|                                       |             |      |            |                 |                                   |    |                        |                |              |          |
|---------------------------------------|-------------|------|------------|-----------------|-----------------------------------|----|------------------------|----------------|--------------|----------|
| spec ref                              | ---         | dr   | Kou Xu     | 2013/06/05      | projection                        | MM | size                   | A2             | scale        | 10:1     |
| tolerance std                         | ASME Y14.5M | eng  | Terry Luo  | 2020/10/21      | chr                               | -  | ecn no                 | ELX-DG-38696-1 |              |          |
| TOLERANCES UNLESS OTHERWISE SPECIFIED |             | appr | Heaven Cen | 2022/08/23      | product family                    | -  | rel level              | Released       |              |          |
| surface                               | linear      | 0.X  | ±.3        | Amphenol<br>FCi | title                             |    | AirMax VS2 RA HEADER   |                | dwg no       | 10125530 |
|                                       |             | 0.XX | ±.15       |                 | 4 Pair, 96 pos, 2 mm, 8 COL, GXT+ |    |                        |                | rev          | D        |
|                                       | angular     | 0°   | ±2°        |                 | cat. no.                          |    | Product - Customer Drw |                | sheet 3 of 3 |          |