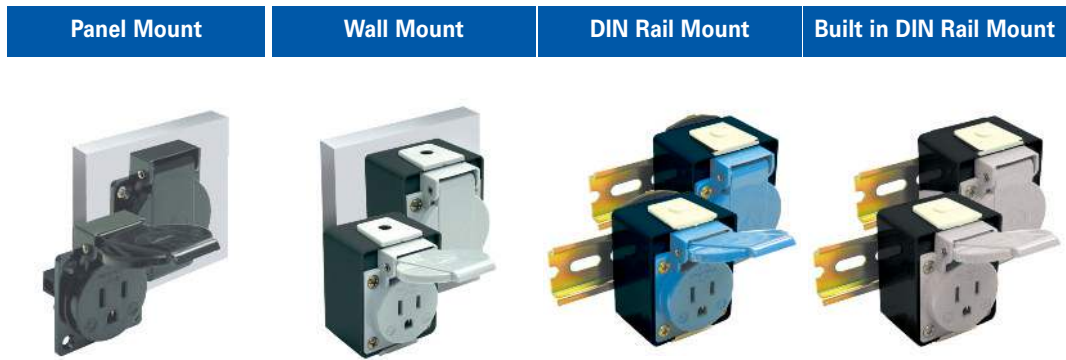


Receptacles

Features:

- DIN Rail, Panel Mount or Wall Mount
- Rating: 15A/125V AC
- Finger Protection: IP54
- Available in 3 colors.



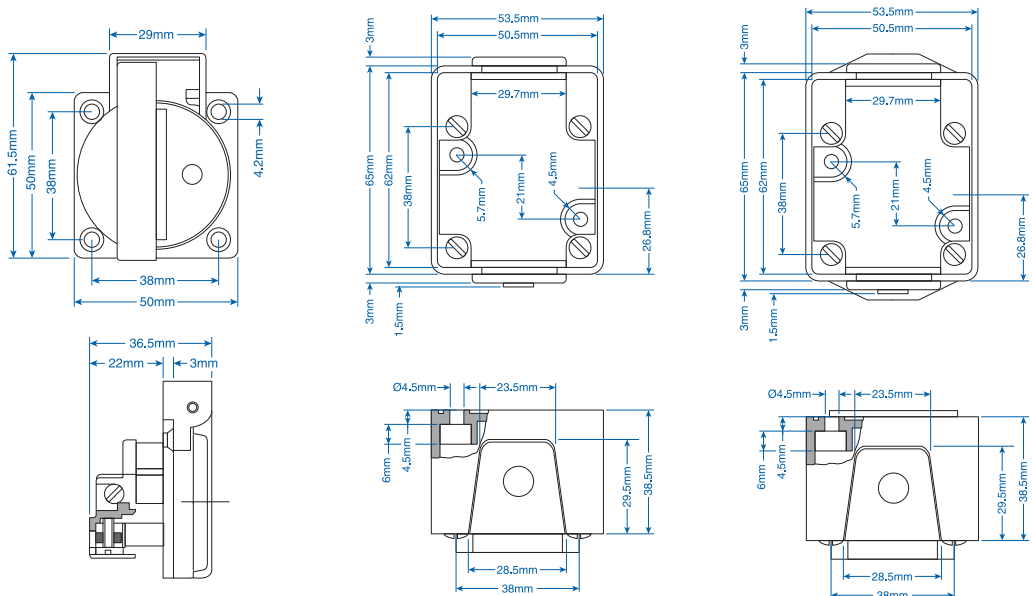
	Panel Mount	Wall Mount	DIN Rail Mount	Built in DIN Rail Mount
External Dimension (HxWxL mm)	36.5 x 61.5 x 50	50 x 71 x 53.5	58.5 x 84 x 53.5	55 x 84 x 54
Stripping Length	10 mm	10 mm	10 mm	10 mm
Insulation Material	Thermoplastic	Thermoplastic	Thermoplastic	Thermoplastic
Type of Connection	3 screw clamps	3 screw clamps	3 screw clamps	3 screw clamps
Approvals*	US E154664	US E154664	US E154664	US E154664
Voltage Rating	125 V	125 V	125 V	125 V
Current Rating	15 A	15 A	15 A	15 A

Cat. No.	Std. Pk.	Cat. No.	Std. Pk.	Cat. No.	Std. Pk.	Cat. No.	Std. Pk.
----------	----------	----------	----------	----------	----------	----------	----------

Complete Kit:

Blue	PMRBU	1	WMRBU BLACKBOX	1	DMRBU BLACKBOX	1	-	-
Gray	PMRGR	1	WMRGR BLACKBOX	1	DMRGR BLACKBOX	1	DMRGR-M*	1
Black	PMRBA	1	WMRBA	1	DMRBA	1	-	-

Optional Accessory Sealing Gasket for Panel Mount Receptacles	SEALGASK	1	Includes Sealing Gasket	Includes Sealing Gasket	Includes Sealing Gasket
---	----------	---	-------------------------	-------------------------	-------------------------

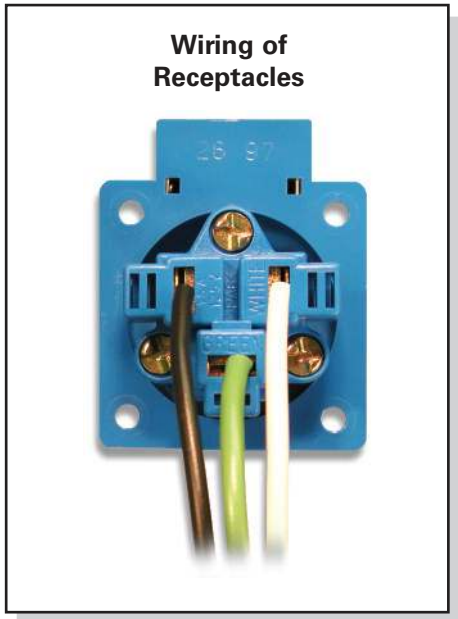
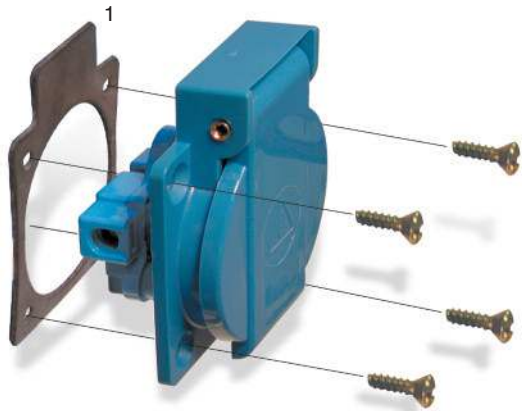


The front socket and hinged protective cover are still available in blue and gray.

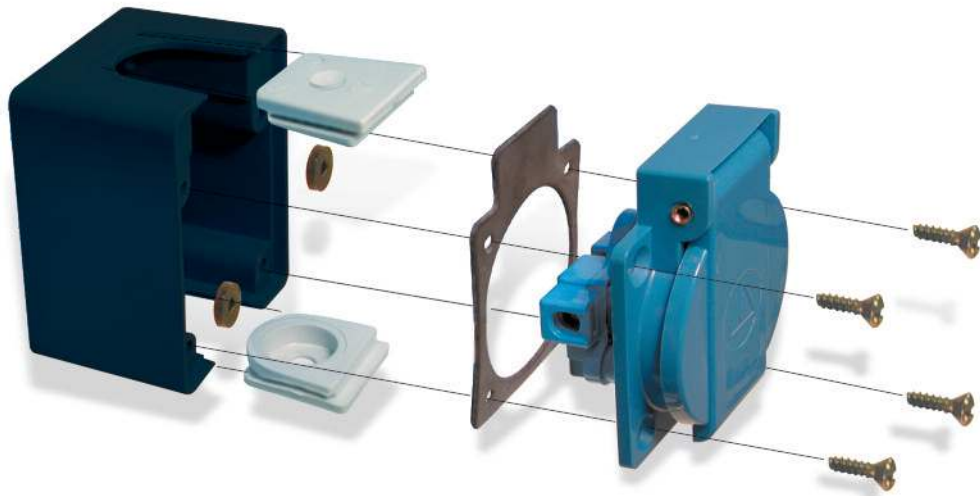
UL approval applies to outlet only, not enclosure or DIN rail clip.

* Available in gray only.

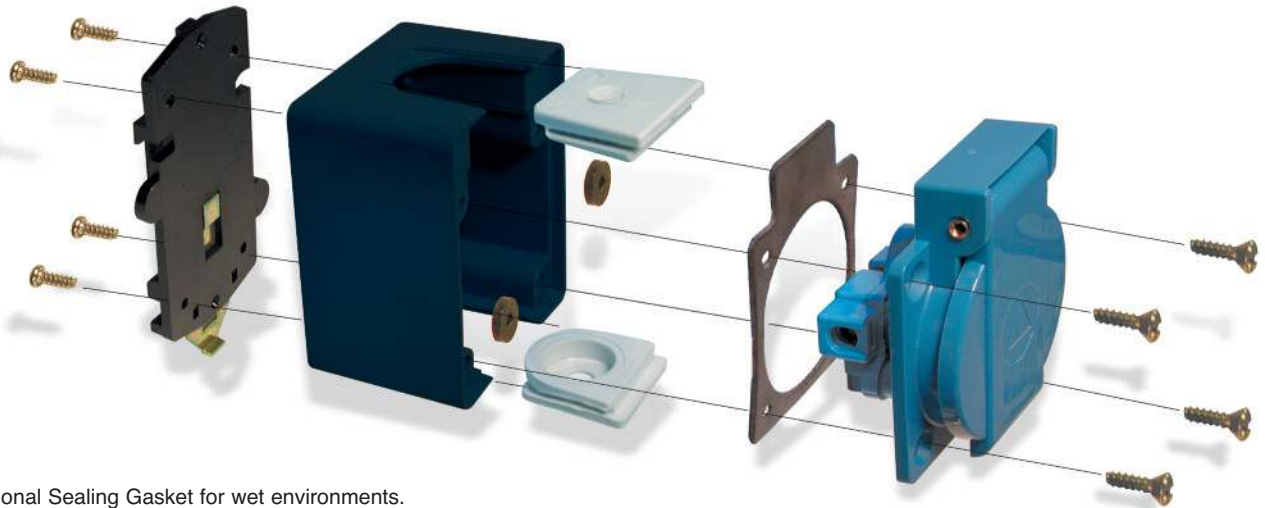
PANEL MOUNT



WALL MOUNT



DIN RAIL MOUNT



¹ Optional Sealing Gasket for wet environments.