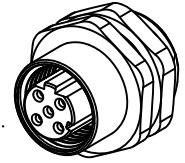
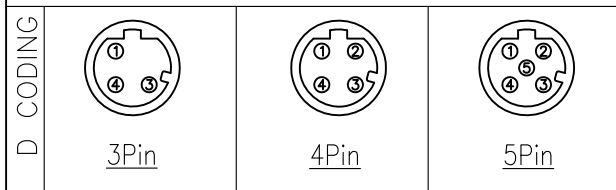


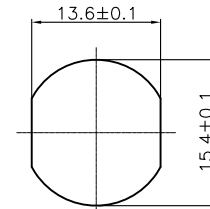
Specifications:
 Current Rating:5A AC/DC
 Voltage Rating:60V AC/DC
 Contact Resistance:5m ohm. Max.
 Insulation Resistance:100M ohm. Min.
 Withstanding Voltage:500V AC/Minute
 Waterproof rate:IP68
 Operating Temperature Range:-40°C ~ +100°C
 Material and Finish
 See Table



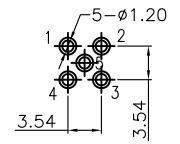
PIN ASSIGNMENTS FRONT VIEW



ITEM	DESCRIPTION	MATERIAL	REMARK	Q'TY
1	Insulator	Nylon	UL94V-0 Black	1
2	Terminal	Copper Alloy	Gold Plated 3u"	3~5
3	Shell	Copper Alloy	Nickel Plated 60u"	1
4	Seal ring	Silica gel	Red	2
5	Nut	Copper Alloy	PG9 Nickel Plated 60u"	1



PG9 Recommended
 Panel CUT-Out
 Thickness:4.0mm



3~5P Recommended PCB Layout
 TOL:±0.05mm

RoHS Compliant

				DRAWN:	GENERAL TOLERANCE: .X=±0.30 .XX=±0.20	CnC Tech Industrial Cable and Connector Technology	
				CHECKED:	UNIT: MM		DESCRIPTION: M12 D CODE SOCKET SOLDER TYPE
B					SCALE:1:1		A4
A	10-MAY-2017			APPROVAL:	SHEET: 1 / 1	PART NO:	
REV	DATE	FILE	BY		PROJECTION:	11072F-XX-2-1-4	