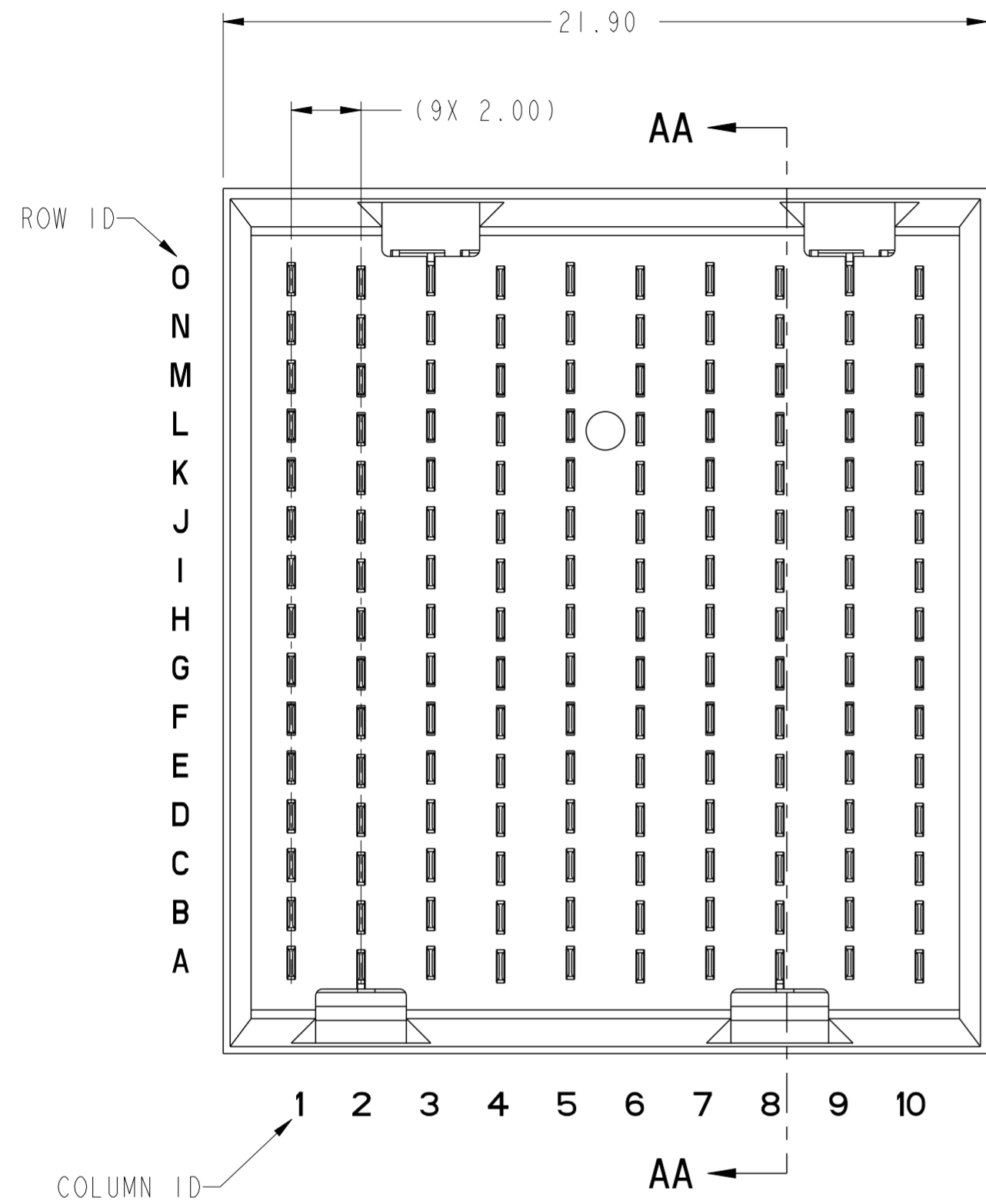
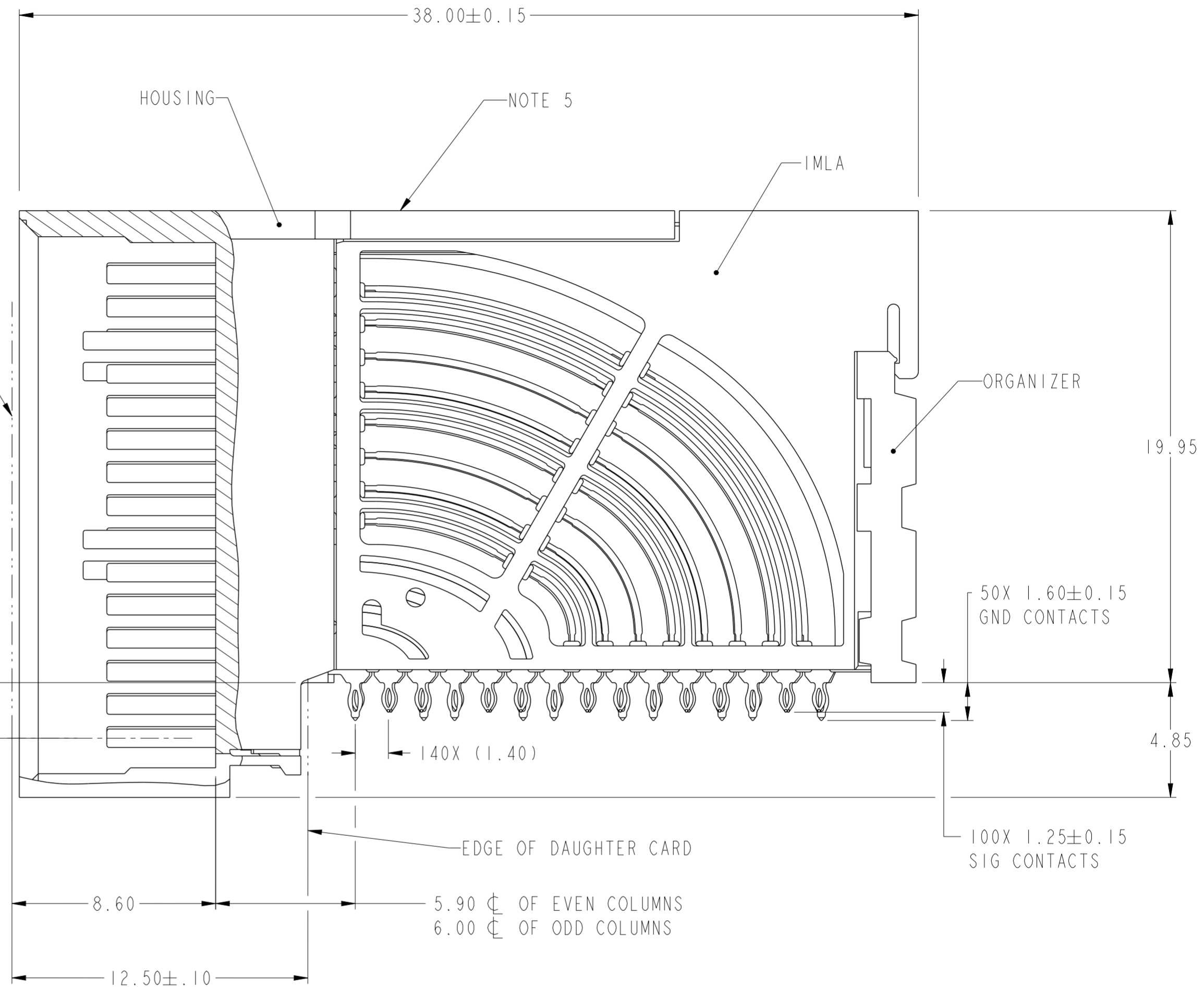


PRODUCT NUMBER
SEE SHEET 3

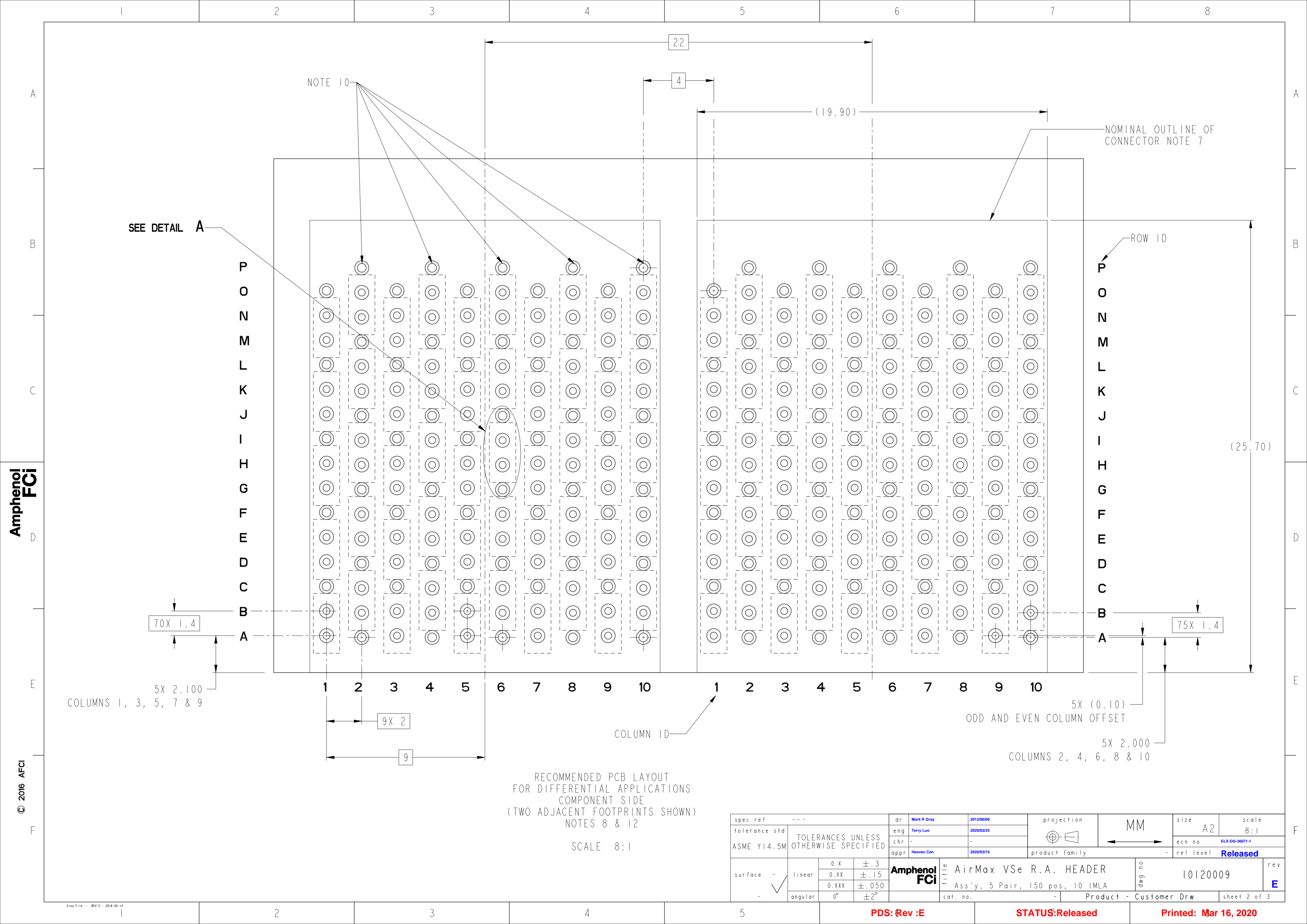


2.35 ϕ OF EVEN COLUMNS
2.25 ϕ OF ODD COLUMNS



SECTION AA-AA

spec ref	---	dr	Mark R Gray	2012/06/06	projection	MM	size	A2	scale	10:1		
tolerance std	ASME Y14.5M	eng	Terry Luo	2020/02/25			ecn no	ELX-DG-36071-1				
TOLERANCES UNLESS OTHERWISE SPECIFIED		chr	-				rel level	Released				
		appr	Heaven Cen				product family	-				
surface	-	linear	0.X	±.3		Amphenol FCI title AirMax VSe R.A. HEADER Ass'y, 5 Pair, 150 pos, 10 IMLA	dwg no 10120009	rev E				
			0.XX	±.15					cat. no.	Product - Customer Drw		sheet 1 of 3
		angular	0°	±2°								



SEE DETAIL A

NOTE 10

NOMINAL OUTLINE OF CONNECTOR NOTE 7

ROW ID

COLUMN ID

70X 1.4
5X 2.100
COLUMNS 1, 3, 5, 7 & 9

75X 1.4
5X (0.10)
ODD AND EVEN COLUMN OFFSET

5X 2.000
COLUMNS 2, 4, 6, 8 & 10

9X 2

9

RECOMMENDED PCB LAYOUT
FOR DIFFERENTIAL APPLICATIONS
COMPONENT SIDE
(TWO ADJACENT FOOTPRINTS SHOWN)
NOTES 8 & 12

SCALE 8:1

spec ref	---	dr	Mark R Gray	2012/06/06	projection	MM	size	A2	scale	8:1		
tolerance std	ASME Y14.5M	eng	Terry Luo	2020/02/25			ecn no	ELX-DG-36071-1				
TOLERANCES UNLESS OTHERWISE SPECIFIED		chr	-	appr			Heaven Cen	2020/03/16	rel level	Released		
surface	-	linear	0.X	±.3		Amphenol FCI title AirMax VSe R.A. HEADER Ass'y, 5 Pair, 150 pos, 10 IMLA cat. no. -	product family	-	rel level	Released		
			0.XX	±.15			product family	-	rel level	Released	rev no 10120009	rev E
		angular	0°	±2°			product family	-	rel level	Released	sheet 2 of 3	

PDS: Rev :E

STATUS:Released

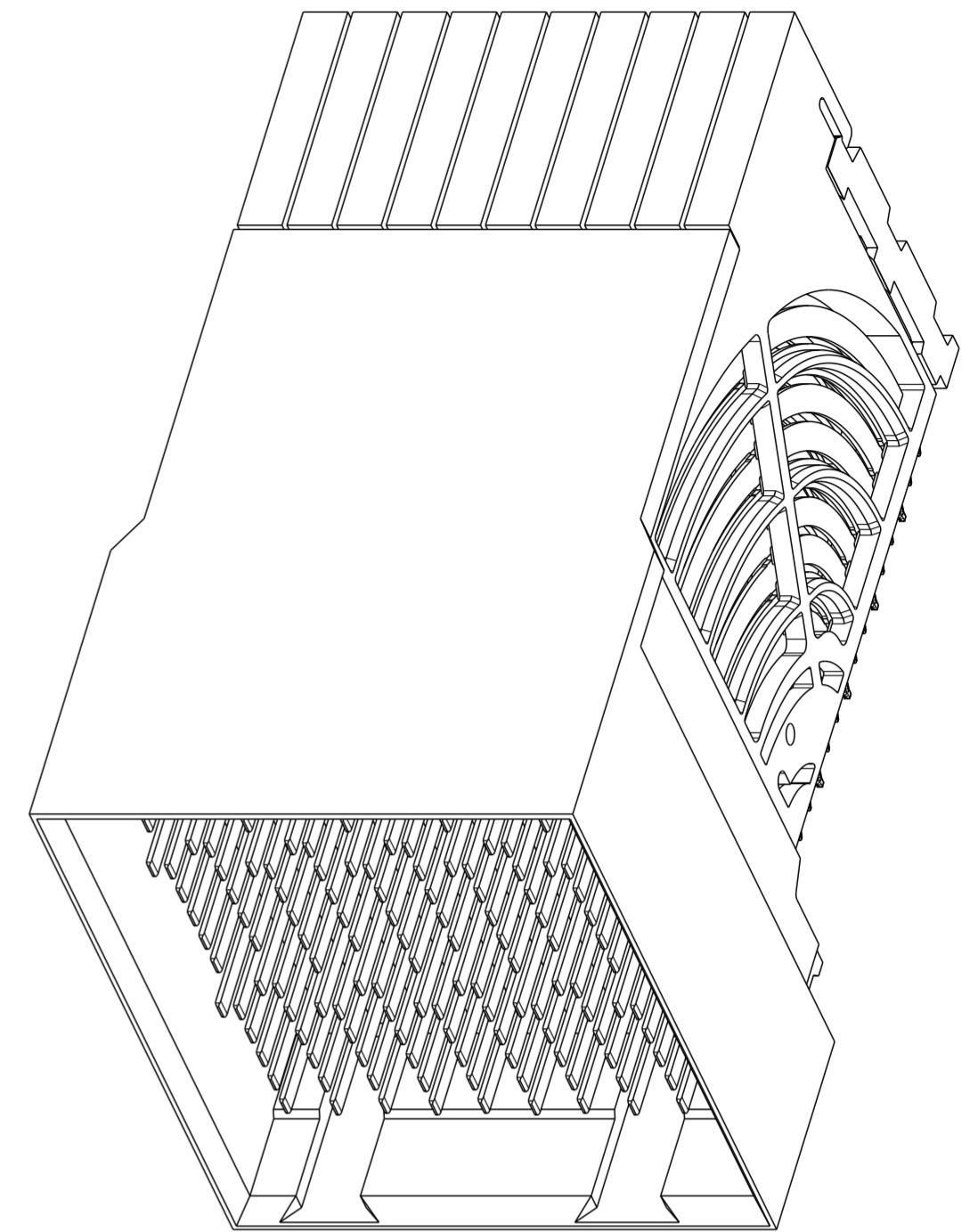
Printed: Mar 16, 2020

Amphenol FCI

© 2016 APCI

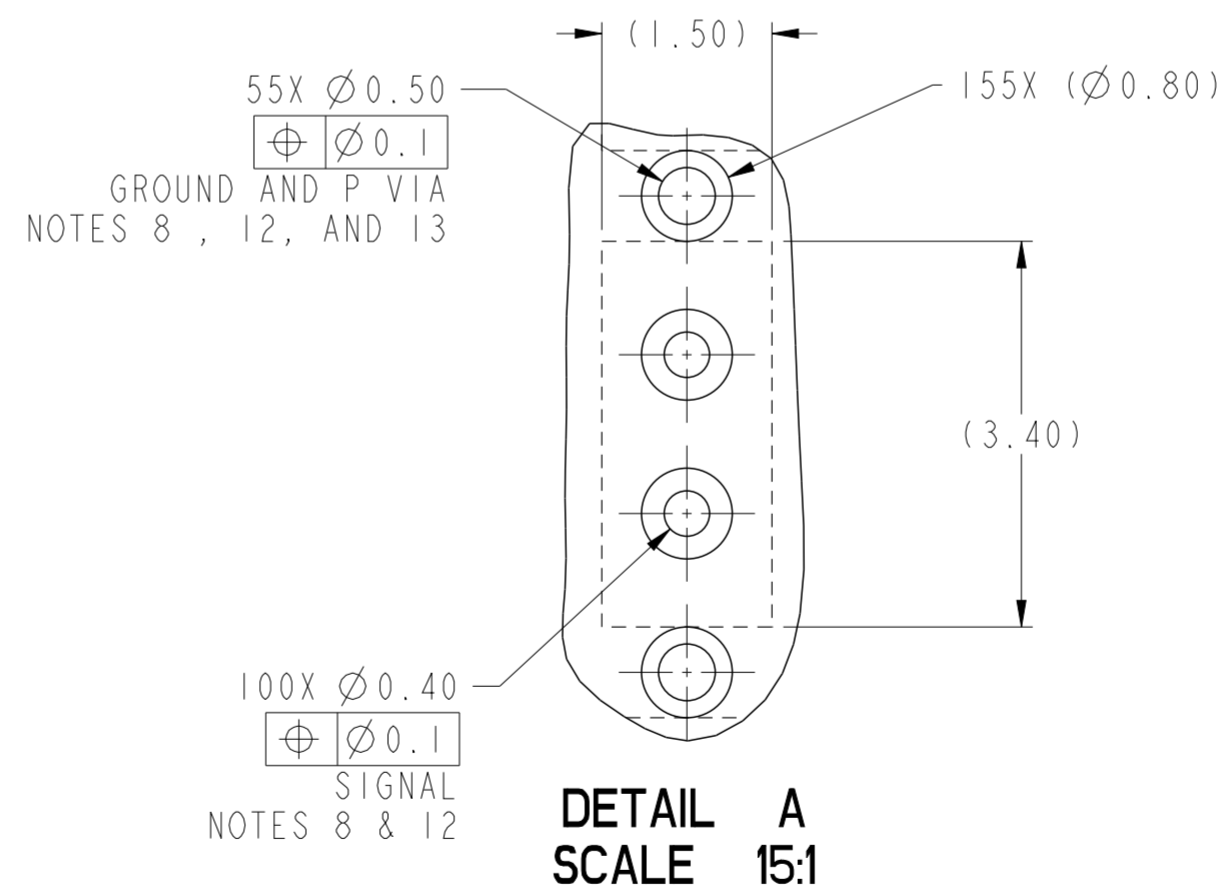
PRODUCT NUMBER	PRESS-FIT TAIL PLATING TYPE
10120009-101	TIN/LEAD ALLOY OVER NICKEL
10120009-101LF	TIN OVER NICKEL (LEAD FREE)

- 1 - CONNECTOR MATERIALS:
HOUSING: HIGH TEMP THERMOPLASTIC, NATURAL, UL94-V0
IMLA PLASTIC: HIGH TEMP THERMOPLASTIC, BLACK, UL94-V0
CONTACT: COPPER ALLOY
ORGANIZER: HIGH TEMP THERMOPLASTIC, NATURAL, UL94-V0
- 2 - CONTACT PLATING:
SEPARABLE INTERFACE:
PERFORMANCE-BASED PLATING, QUALIFIED TO MEET THE REQUIREMENTS OF FCI PRODUCT SPECIFICATION GS-12-0956 INCLUDING TELCORDIA GR-1217-CORE (NOVEMBER 1995) CENTRAL OFFICE TEST SEQUENCE
- PRESS-FIT TAILS: SEE TABLE
- 3 - PRODUCT SPECIFICATION: GS-12-0956
- 4 - APPLICATION SPECIFICATION: GS-20-0305
- 5 - PRODUCT MARKING, (PROTOTYPE, PART NUMBER & LOT CODE), ON THIS SURFACE.
- 6 - POSITIONS "F" AND "L" OF ODD NUMBERED COLUMNS AND POSITIONS "G" AND "M" OF EVEN NUMBERED COLUMNS CORRESPOND TO EARLY MATE HEADER PINS.
- 7 - CONNECTOR OUTLINE MAY BE SCREEN PRINTED ONTO CUSTOMER PCB TO BE USED AS A GUIDE FOR CONNECTOR PLACEMENT.
- 8 - REFER TO CUSTOMER DRAWING 10104444 FOR INFORMATION ON PCB HOLE DIAMETERS AND PLATING OPTIONS
- 9 - LEAD FREE PRODUCT MEETS THE EUROPEAN UNION DIRECTIVES & OTHER COUNTRY REGULATIONS AS DESCRIBED IN GS-22-008
- 10 - THESE OUTER VIAS (P) ARE OPTIONAL. WHILE NO CONNECTOR EONS ARE PRESSED INTO THESE HOLES WE RECOMMEND (Ø0.500) FINISHED HOLES AT THESE LOCATIONS TO PROVIDE GROUND SYMMETRY THROUGH THE PCB.
- 11 - PACKAGING MEETS GS-14-920 LEAD FREE LABELING SPECIFICATION.
- 12 - GROUND CONTACTS (C, F, I, L, & O IN ODD COLUMNS AND A, D, G, J, & M IN EVEN COLUMNS) REQUIRE (Ø0.50) FINISHED HOLES. SIGNAL LOCATIONS REQUIRE (Ø0.40) FINISHED HOLES



10120009-101 OR -101LF

SCALE 4:1



spec ref	---	dr	Mark R Gray	2012/06/06	projection	MM	size	A2	scale	10:1	
tolerance std	ASME Y14.5M	eng	Terry Luo	2020/02/25	chr	-	ecn no	ELX-DG-36071-1	rel level	Released	
surface	-	appr	Heaven Cen	2020/03/16	product family	-	cat. no.	-	Product - Customer Drw	sheet 3 of 3	
	linear	0.X	±.3	Amphenol FCI	title		AirMax VSe R.A. HEADER	dwg no	10120009	rev	E
		0.XX	±.15		Ass'y, 5 Pair, 150 pos, 10 IMLA						
	angular	0°	±2°		cat. no.		-	Product - Customer Drw	sheet 3 of 3		

PDS: Rev :E

STATUS:Released

Printed: Mar 16, 2020