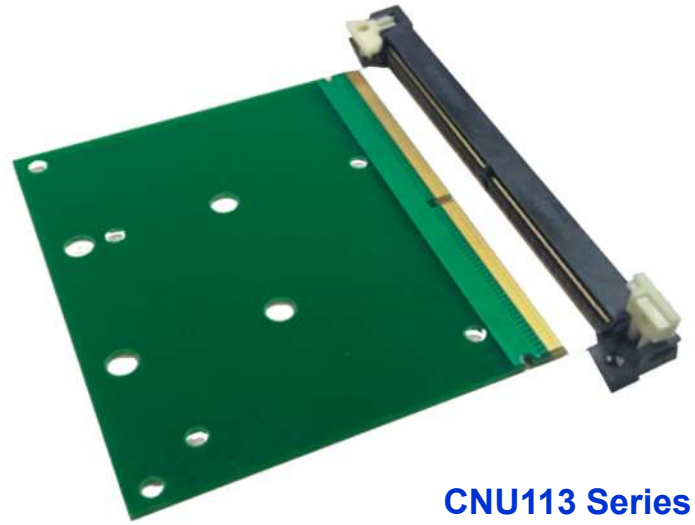


Automotive Grade MXM3.1 Connector

Product Features:

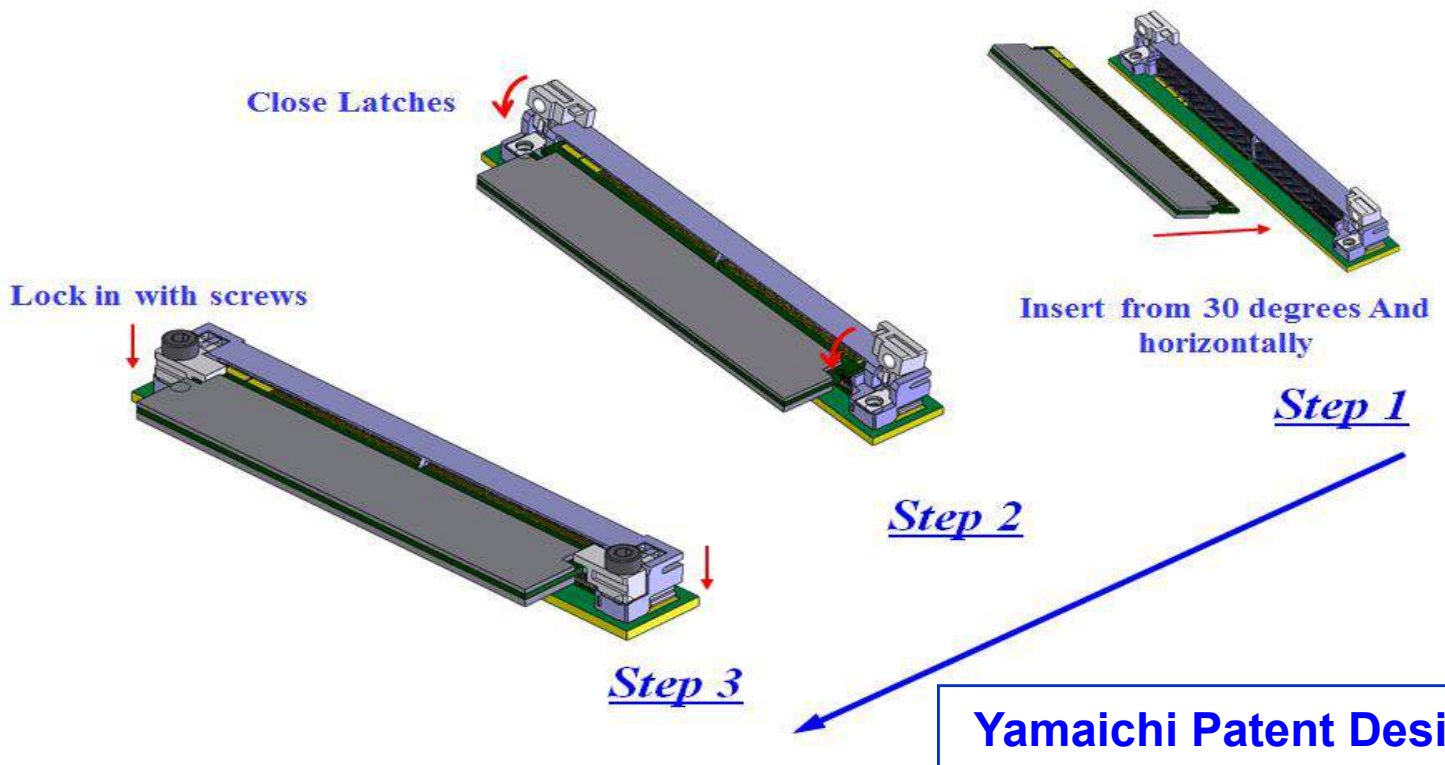
- Clamshell Latch + Screw Lock designs = Secured Module Connection
- Compatible mechanical interface with MXM3.1 module SPEC and can be appropriated for SMARC
- Transmission Speed: 12 Gbps
- Operating Temperature: -40°C ~ +105°C
- Ideal for Automotive Infotainment and Industrial Embedded systems
- High current variation products available



CNU113 Series
Automotive Grade MXM3.1 Connector

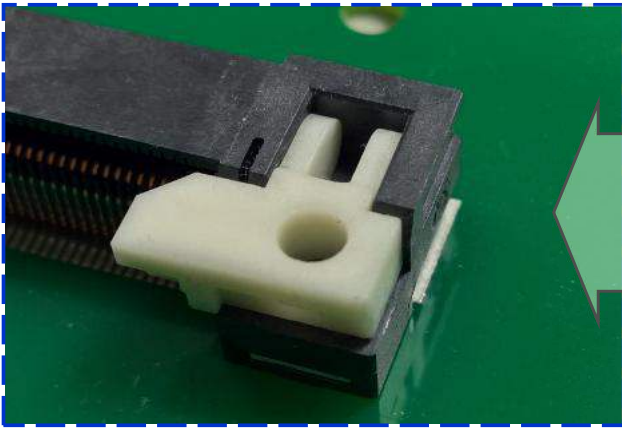
Product PN	Product Description
CNU113-314-2301-VE	314pin MXM3.1 Connector with screw nut
CNU113-314-2302-VE	314pin MXM3.1 Connector without screw nut

CNU113-314 Series MXM3.1 Module Assembly Process



Automotive Grade MXM3.1 Connector

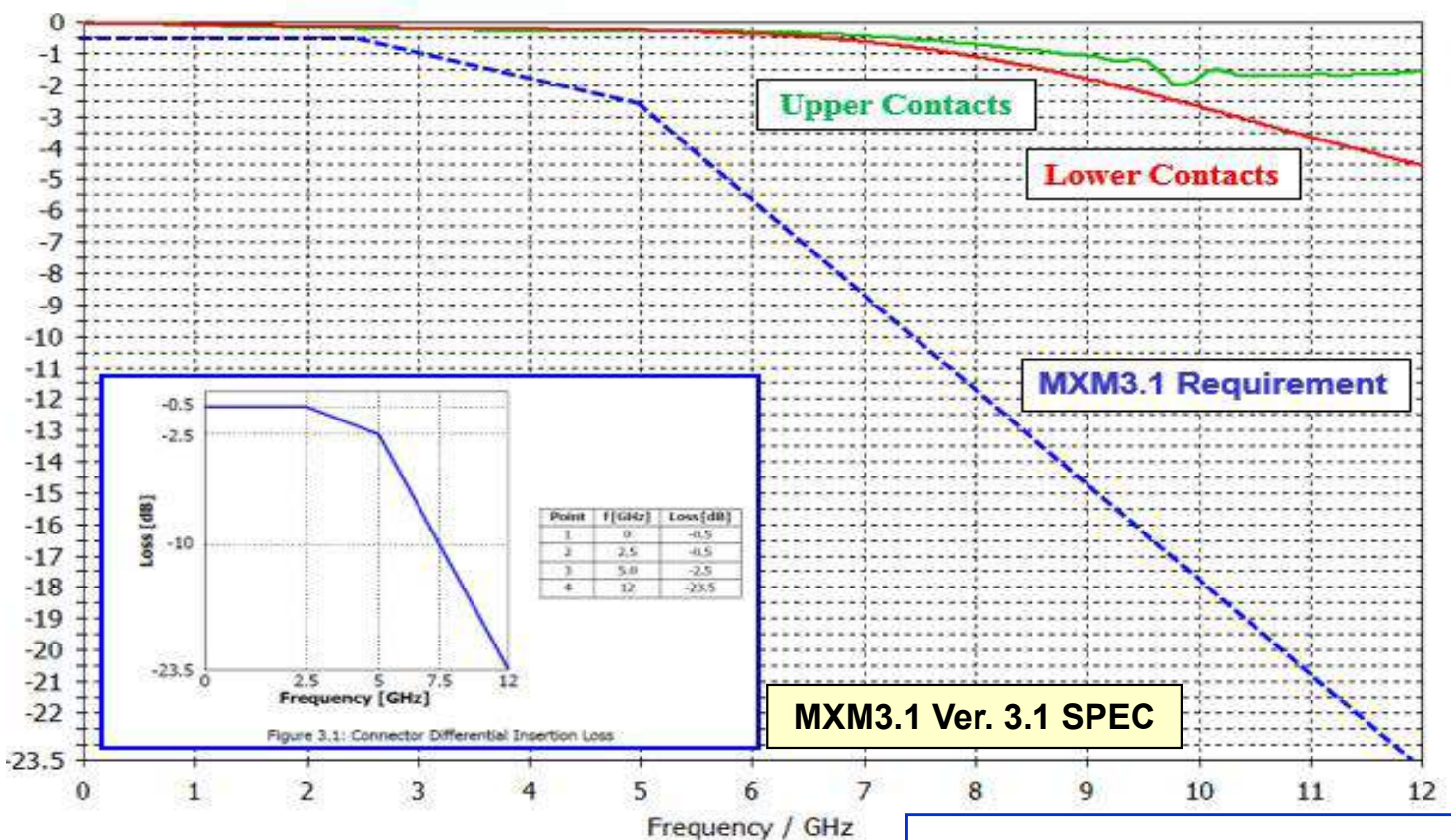
CNU113-314 Series Latch Lock Advantages



- 1.) Latch Design allows operator perform easy module insertion process
- 2.) Latch Lock & screws hold down module for secured connectivity
- 3.) Screwed-down design provide maximum protection against vibration and impact shock within Automotive environment

CNU113-314 Series Signal Integrity Performance (Insertion Loss Data)

S-Parameters [Magnitude in dB]



Yamaichi Patent Design