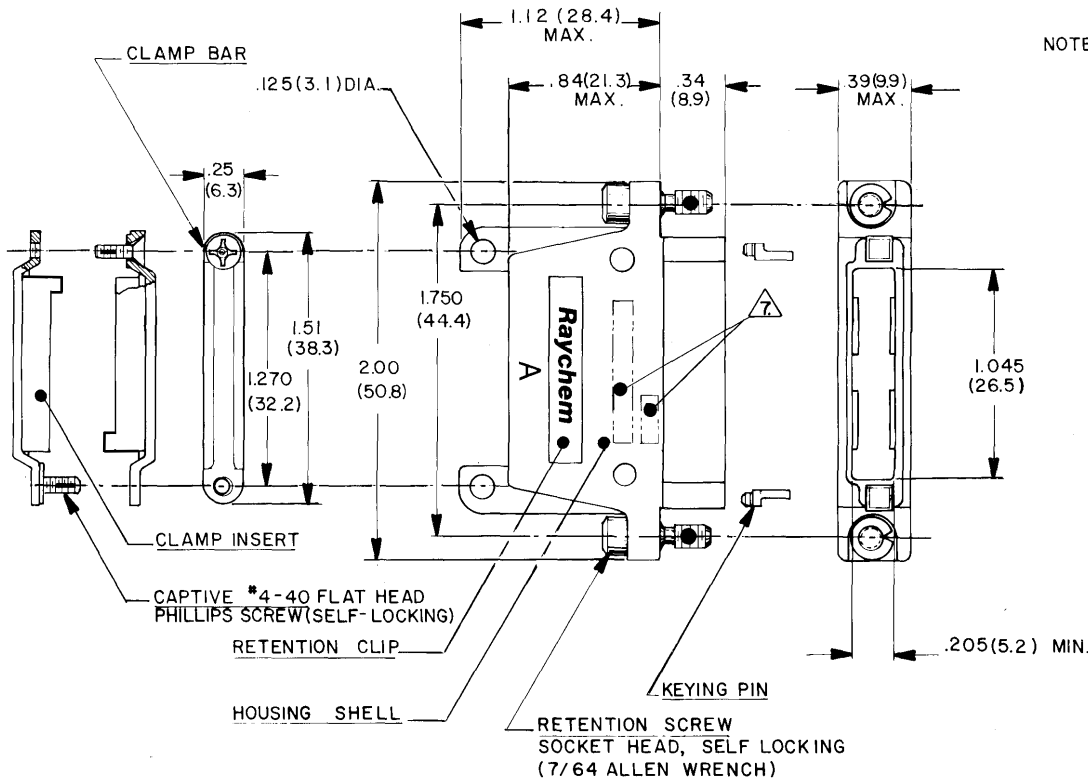


A	CHANGE PER DCO 00816			10-27-79	Mbw
B	REV PER ECO 12-020967	CT	12-12		KH



NOTES:

- MATERIALS:
 - 1-A. HOUSING SHELL; ALUMINUM ALLOY PER QQ-A-591.
 - 1-B. RETENTION SCREW; STAINLESS STEEL PER QQ-S-763, 300 SERIES.
 - 1-C. RETENTION CLIP; COPPER ALLOY 172 PER QQ-C-533.
 - 1-D. KEYING PIN; POLYARYLENE THERMOPLASTIC, MOLDED.
 - 1-E. CLAMP BAR; STAINLESS STEEL PER QQ-S-763, 300 SERIES.
 - 1-F. CLAMP INSERT; SILICONE ELASTOMER PER ZZ-R-765.
 - 1-G. CAPTIVE SCREW; STAINLESS STEEL PER QQ-S-763, 300 SERIES.
- FINISH:
 - 2-A. HOUSING SHELL; NICKEL PLATED PER MIL-C-26074, CLASS 3, GRADE B.
 - 2-B. RETENTION SCREW; PASSIVATED PER QQ-P-35.
 - 2-C. RETENTION CLIP; NICKEL PLATED PER MIL-C-26074, CLASS 2, GRADE B.
 - 2-D. CLAMP BAR; PASSIVATED PER QQ-P-35.
 - 2-E. CAPTIVE SCREW; PASSIVATED PER QQ-P-35.
- HOUSING MEETS THE REQUIREMENTS OF **Raychem** SPECIFICATION D-604.
- FOR MOUNTING/MATING AND KEYING INFORMATION, SEE **Raychem** DRAWING D652-0012.
- (2) KEYING PINS ARE SUPPLIED NOT INSTALLED WITH EACH PLUG.
- DUST COVER SUPPLIED INSTALLED WITH EACH PLUG.
- Raychem** PART NO MTC100-YHI-003 AND DATE CODE IS STAMPED APPROXIMATELY AS SHOWN.

8	WEIGHT (MAX)	LBS	GRAMS
		.0509	23.12

9 CONFIGURATION CONTROL PER ES 71001 APPLIES.

© Raychem Corporation 1979

CONNECTOR SPECIFICATION CONTROL DRAWING

UNLESS OTHERWISE SPECIFIED DIMENSIONS ARE IN INCHES BRACKETED DIMENSIONS () ARE METRIC AND TOLERANCES ARE: .XXX: ± .005 (0.1 M.M.) .XX: ± .02 (0.5 M.M.) Δ: ±	DRAWN	SA. LOPEZ	8/2/79	Raychem <small>RAYCHEM CORPORATION 300 HIGHLAND AVENUE MENLO PARK, CALIFORNIA 94025</small>
	CHECKED	<i>JB</i>	8-2-79	
	APPROVED	<i>Blair</i>	8-2-79	
	APPROVED	<i>Blair</i>	8-2-79	
	APPROVED	<i>Blair</i>	8-2-79	
TITLE				PLUG HOUSING 1 INCH WITH CABLE CLAMP MTC100 SERIES-CONDUCTIVE FINISH
SIZE	CODE IDENT	DWG. NO.		
C	NO. 08090	MTC100-YHI-003		
PROJECT			6448 - H008	WEIGHT
				SHEET 1 OF 1

If this document is printed it becomes uncontrolled.
Check with the web for latest revision.

DO NOT SCALE THIS DRAWING

CONFIGURATION CONTROL